

Australian Capital Territory

Road Transport (General) Declaration that the road transport legislation does not apply to certain roads and road related areas 2003 (No. 5)

Disallowable instrument DI2003—148

made under the

***Road Transport (General) Act 1999, s12 (Power to include or
exclude areas in road transport legislation)***

I declare that the road transport legislation does not apply to the roads or road related areas used or impinged on by any competing vehicle participating in a 'green' special stage of the 2003 "Back in the Black Rally" on 29 June 2003.

For this declaration, the following definitions apply:

Competing vehicle means:

Any vehicle used for participating in a 'green' special stage of the 2003 "Back in the Black Rally".

'Green' special stage means:

The period from the time when a special stage is declared to be active for rally competition until the time when course control for that special stage is declared closed.

Special stage means:

(a) The competitive routes for the following special stages shown on Map 1, described as:

- Special stage 1 (SS1) – Brindabella Road

(b) The competitive route for the following special stage shown on Map 2, described as:

- Special stage 2 (SS2) – West Knob I; and
- Special stage 6 (SS6) – West Knob II

(c) The competitive route for the following special stage shown on Map 3, described as:

- Special stage 3(SS3) – Champagnes;

(d) The competitive route for the following special stage shown on Map 4, described as:

- Special stage 4 (SS4) – Hyles I; and
- Special stage 7 (SS7) – Hyles II

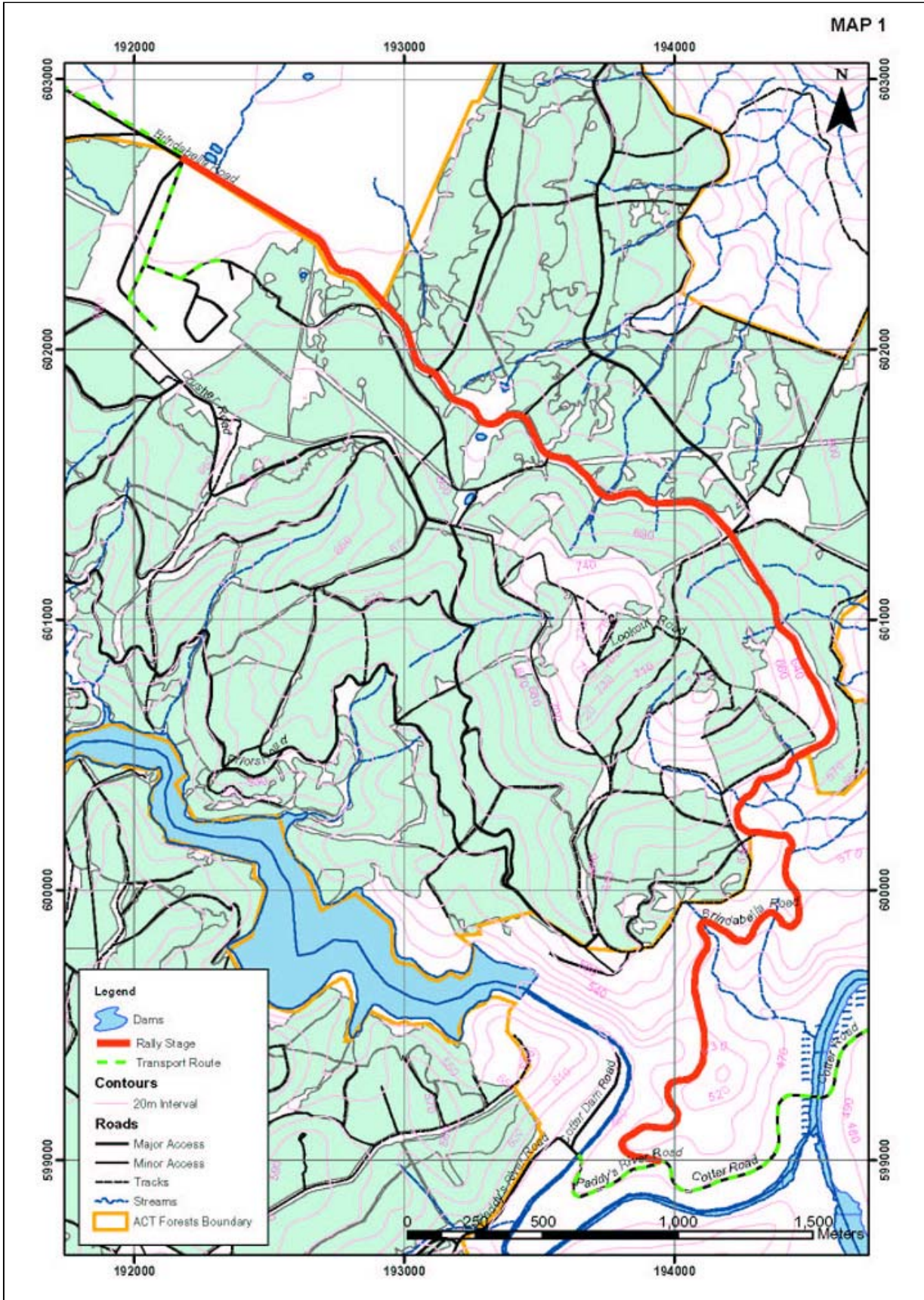
(e) The competitive route for the following special stage shown on Map 5, described as:

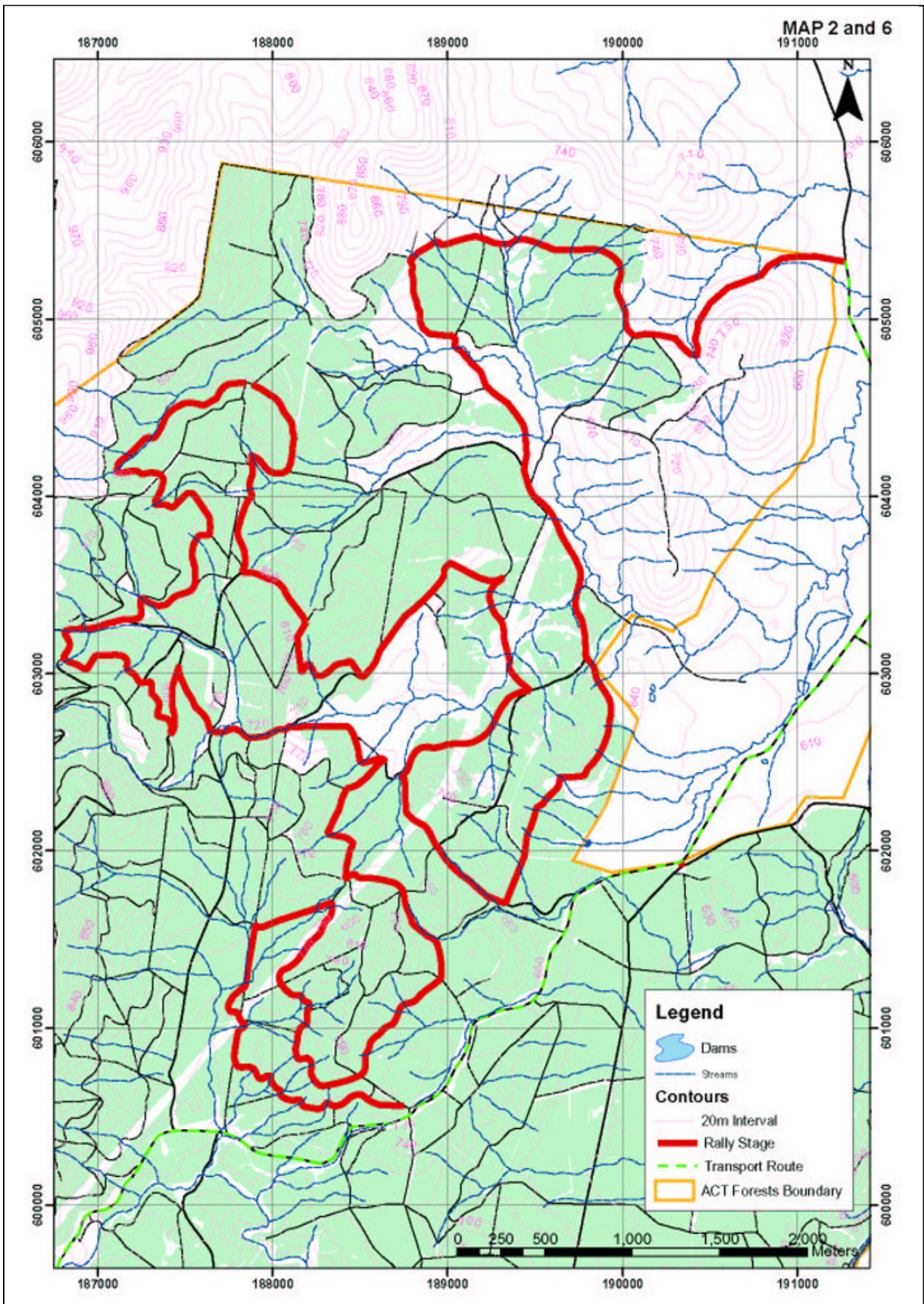
- Special stage 5 (SS5) – Sugarloaf I
- Special stage 8 (SS8) – Sugarloaf II

This declaration has effect during the competitive ‘green’ special stages of the 2003 “Back in the Black Rally” on 29 June 2003. Indicative start times for vehicles participating in each ‘green’ special stage and indicative start control closure times for each ‘green’ special stage are set out in the attached Itinerary, Attachment 1.

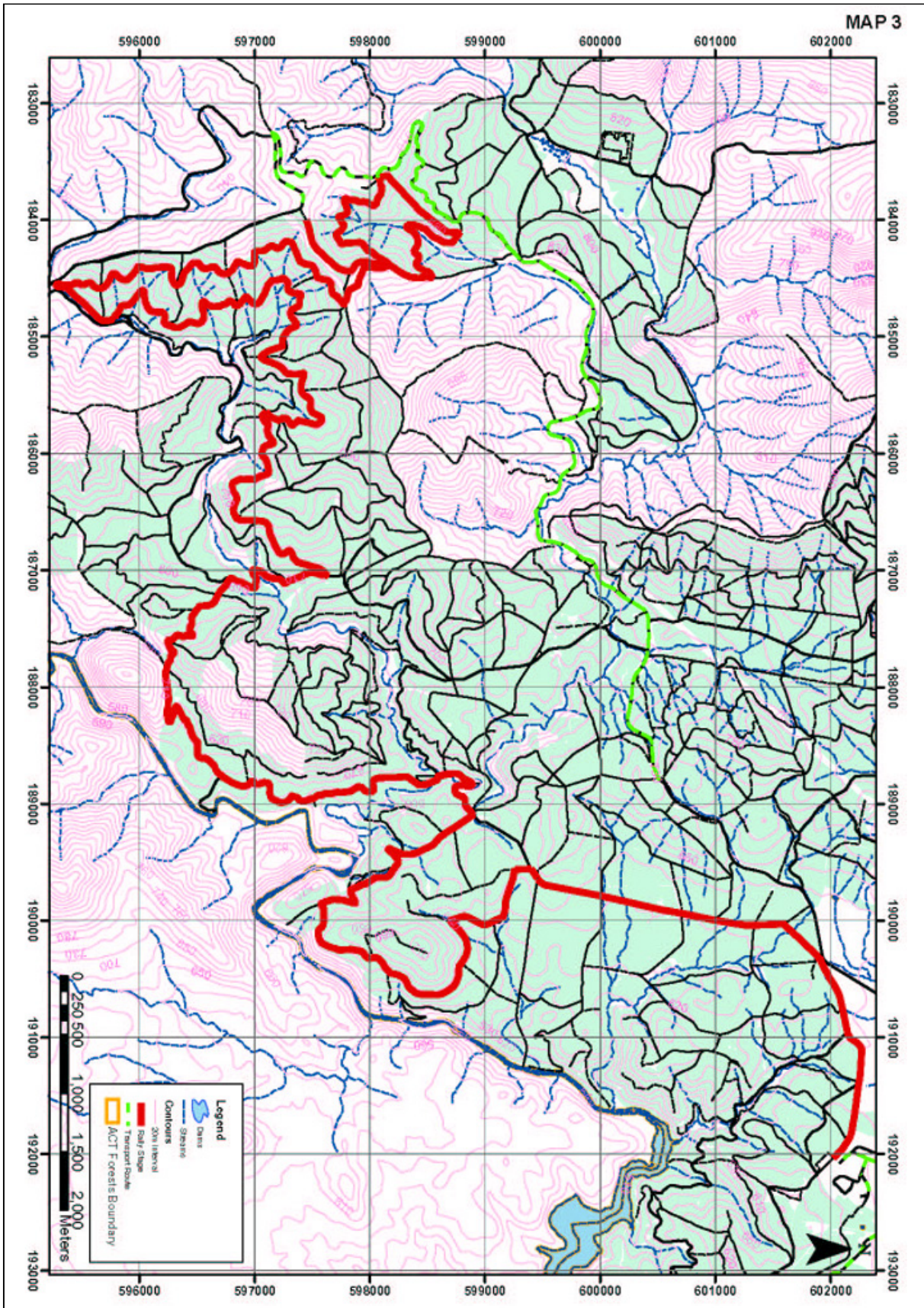
Bill Wood
Minister for Urban Services
18 June 2003

MAP 1

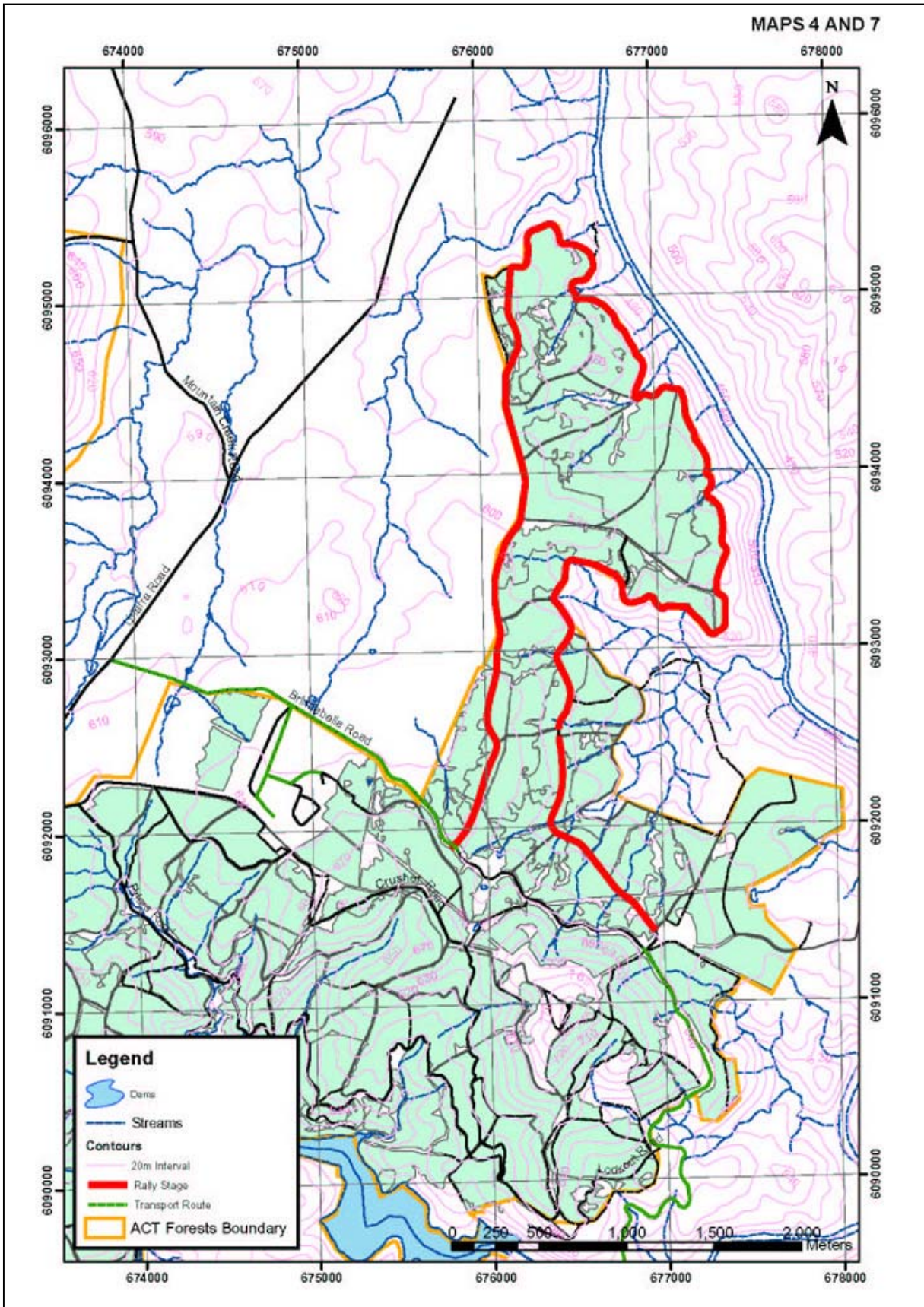




MAP 3



MAPS 4 AND 7



MAPS 5 and 8

