

Australian Capital Territory

# Road Transport (General) (Application of Road Transport Legislation) Declaration 2006 (No 6)

Disallowable instrument DI2006—91

made under the

**Road Transport (General) Act 1999, s13 (Power to exclude vehicles, persons or animals from road transport legislation)**

---

## 1 Name of instrument

This instrument is the *Road Transport (General) (Application of Road Transport Legislation) Declaration 2006 (No 6)*.

## 2 Commencement

This instrument commences on 23 June 2006.

## 3 Declaration

I declare that the road transport legislation does not apply to the ACT roads or road related areas used or impinged on by any competing vehicle participating in a special stage of the Brindabella Motor Sport Club Snap-On Fyshwick Classic Stages Rally on 24 June 2006.

This declaration has effect during the competitive special stages of the event.

Indicative start times and start control close times for vehicles participating in each competitive special stage of the event are set out in the attached Event Itinerary.

This declaration expires on 26 June 2006.

For this declaration, the following definitions apply:

**Competing vehicle means:**

Any vehicle used for participating in a special stage of the event.

**Event means:**

The Brindabella Motor Sport Club Snap-On Fyshwick Classic Stages Rally on 24 June 2006.

**Special stage means:**

The period from the time when an event official declares a special stage active for rally competition until the time when an event official declares course control for that special stage closed.

The competitive routes for the following special stages are shown on the attached maps:

- Special stage 1 – Half Inch Socket I;
- Special stage 2 – Impact Drill I;
- Special stage 3 – Mega Toolbox I;
- Special stage 4 – Half Inch Socket II
- Special stage 5 – Impact Drill II; and
- Special stage 6 – Mega Toolbox II.

John Hargreaves  
Minister for Territory & Municipal Services  
30 May 2006



# Snap-on Tools

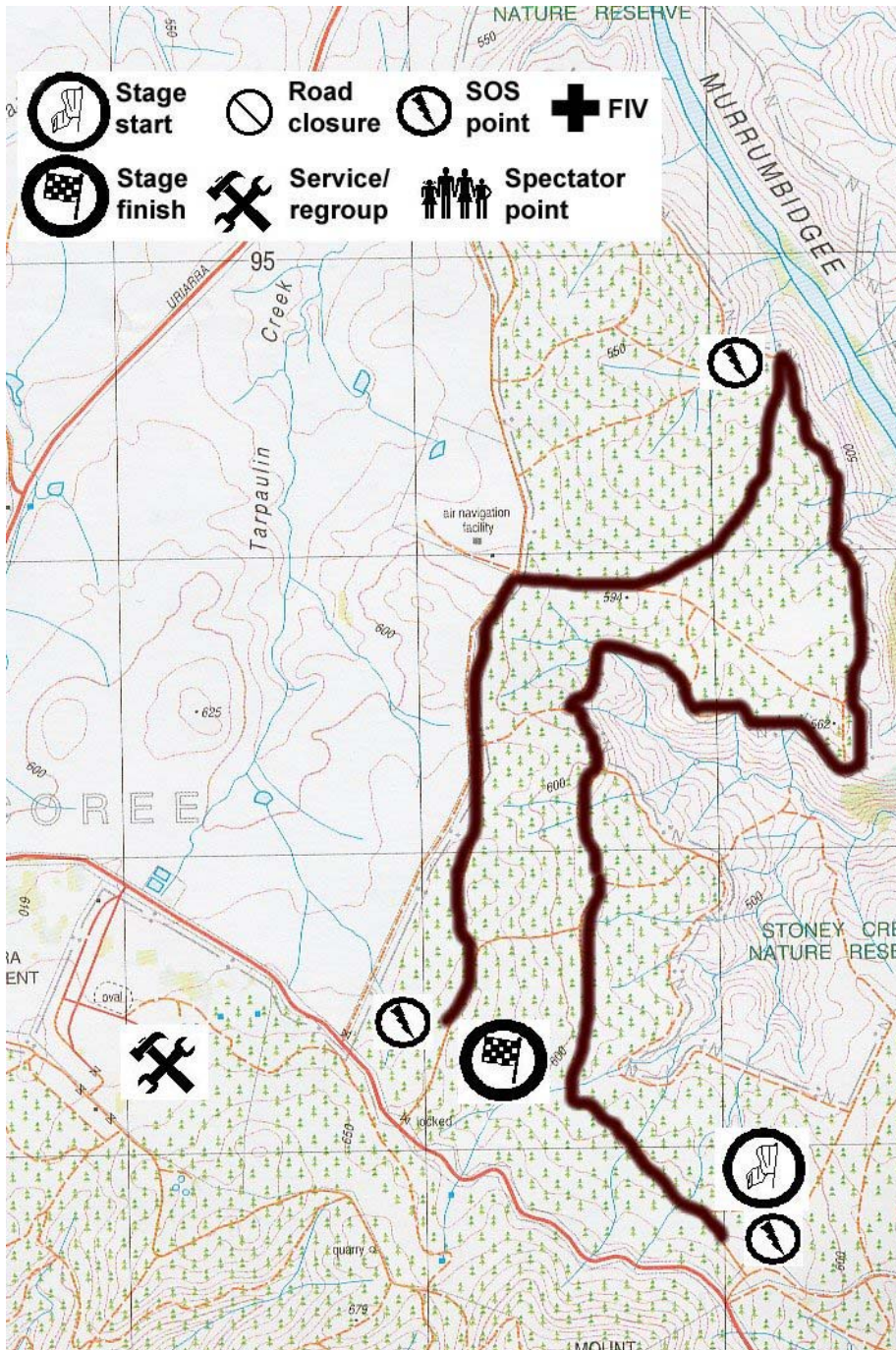
## CLASSIC STAGES RALLY

Itinerary 24th June 2006

Stage Name	Total distance (km)	Comp. Distance (km)	Section	Service Time (mins)	Time Allowed (h:min)	"000" Start time	"00" Start time	"0" Start time	Car 1 Start time	Your car Start time	Car 40 Start time	Control closes	Average speed (kph)
<b>Start of leg one</b>													
<b>(Liaison from start)</b>	3.39	0.00	1.0-1.1	nil	0:07	9:30	10:00	10:15	10:30		11:48	12:08	29.06
<b>Half Inch Socket I</b>	15.14	7.34	1.1-1.2	nil	0:20	9:40	10:10	10:25	10:40		11:58	12:18	45.42
<b>Impact Drill I</b>	35.65	21.55	1.2-1.3	25	1:05	10:03	10:33	10:48	11:03		12:21	12:41	32.91
<b>MegaToolbox I</b>	43.89	30.37	1.3-1.4	30	1:15	11:11	11:41	11:56	12:11		13:29	13:49	35.11
<b>Half Inch Socket II</b>	15.14	7.34	1.4-1.5	nil	0:20	12:29	12:59	13:14	13:29		14:47	15:07	45.42
<b>Impact Drill II</b>	35.65	21.55	1.5-1.6	25	1:05	12:52	13:22	13:37	13:52		15:10	15:30	32.91
<b>MegaToolbox II</b>	40.53	30.37	1.6-1.7	nil	0:45	14:00	14:30	14:45	15:00		16:18	16:38	54.04
<b>(Finish)</b>						14:48	15:18	15:33	15:48		17:06	17:26	
<b>TOTAL</b>	<b>189.39</b>	<b>118.52</b>											

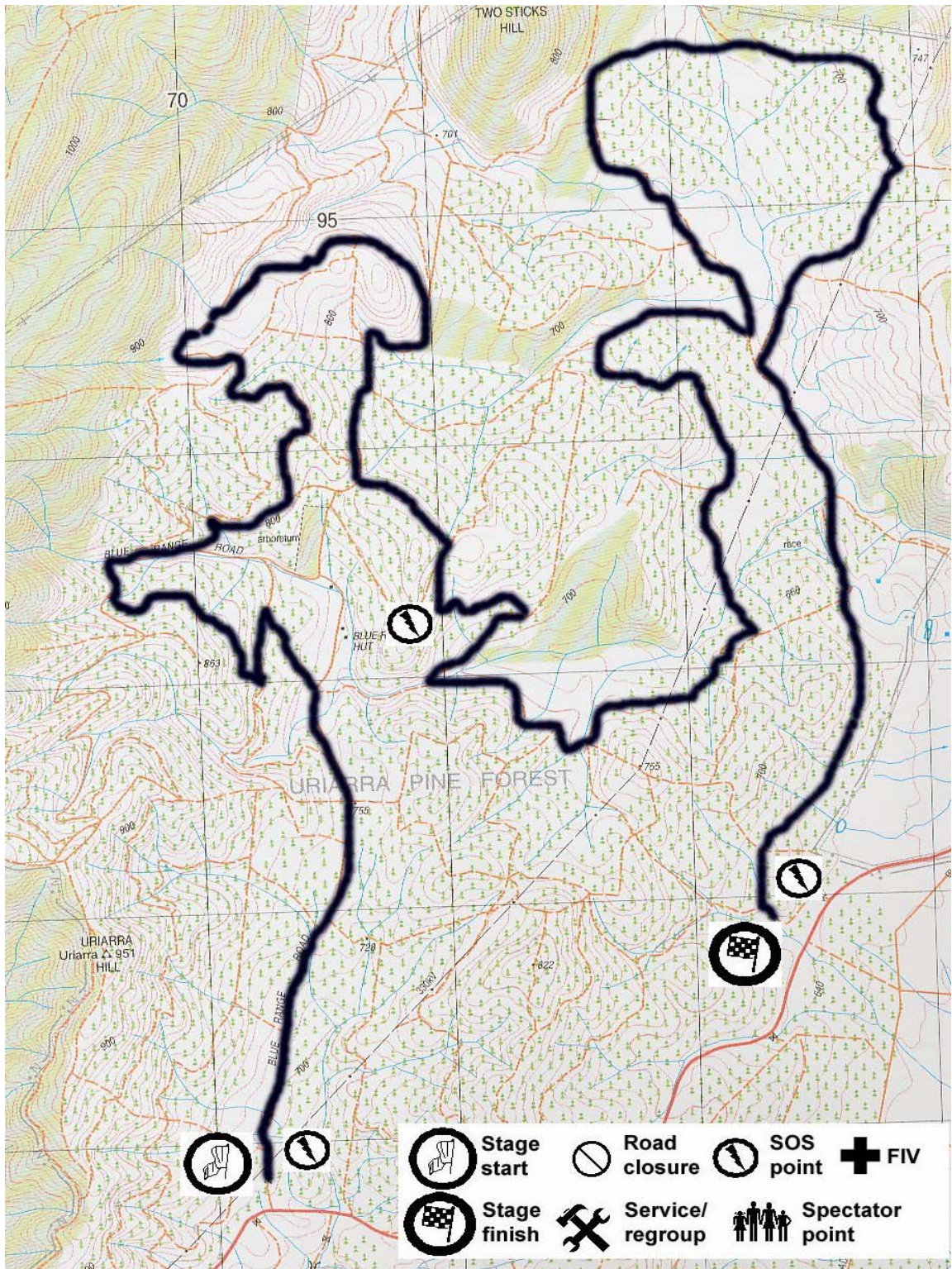
Time in Control 0:03 mins  
 Diff Car 1-40 1:18 mins  
 Late Time 0:20 mins  
 "000" 1:00 hours  
 "00" 0:30 mins  
 "0" 0:15 mins

## **SPECIAL STAGE 1 : HALF INCH SOCKET I**



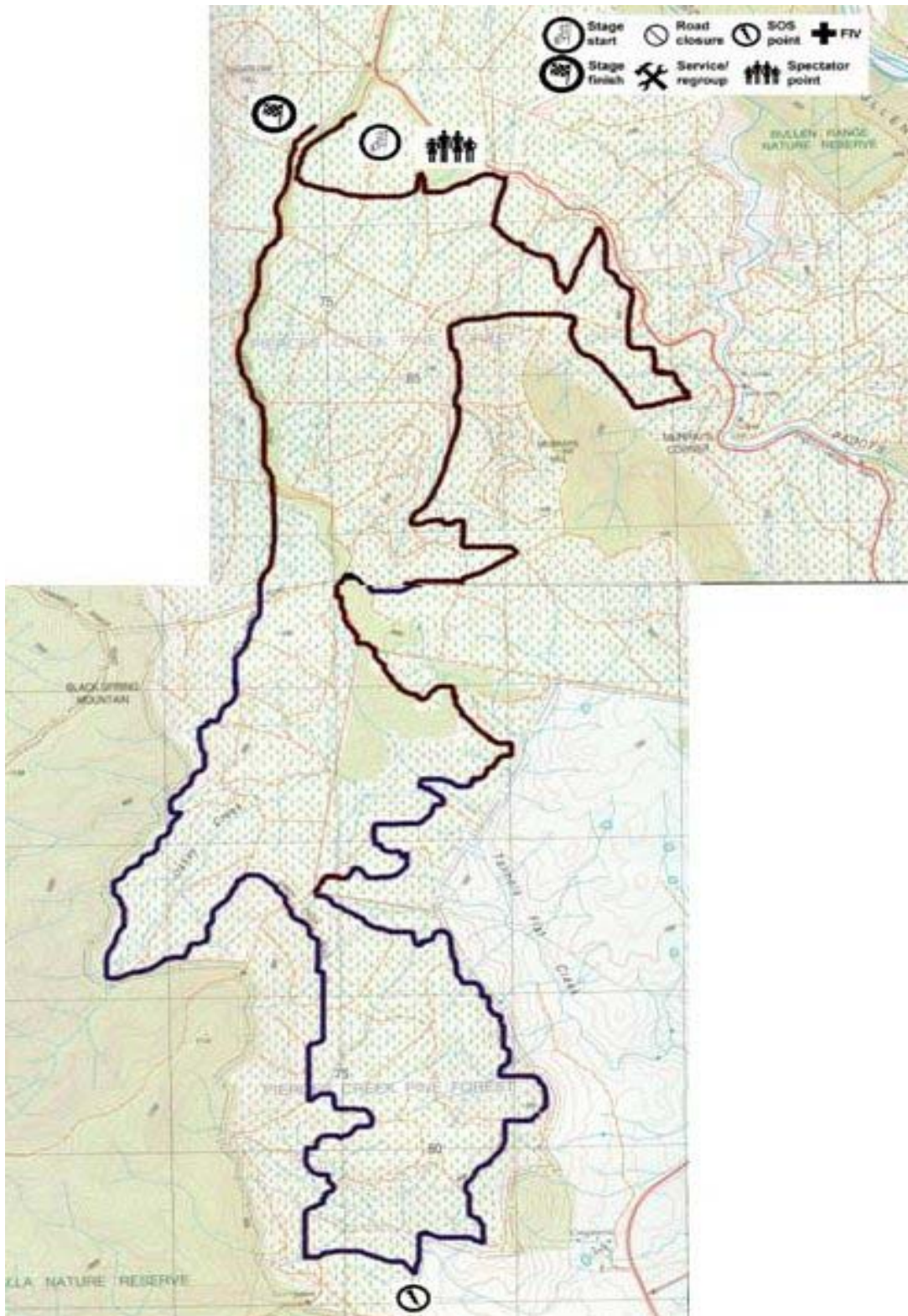


## **SPECIAL STAGE 2 : IMPACT DRILL I**





## **SPECIAL STAGE 3 : MEGA TOOLBOX I**



## **SPECIAL STAGE 4 : HALF INCH SOCKET II**

