

Australian Capital Territory

Public Place Names (Phillip) Determination 2007 (No 1)

Disallowable instrument DI2007—156

made under the

Public Place Names Act 1989— section 3 (Minister to determine names)

I DETERMINE the name of the public place that is Territory land as specified in the attached schedule and as indicated on the associated plan.

Andrew Barr MLA
Minister for Planning

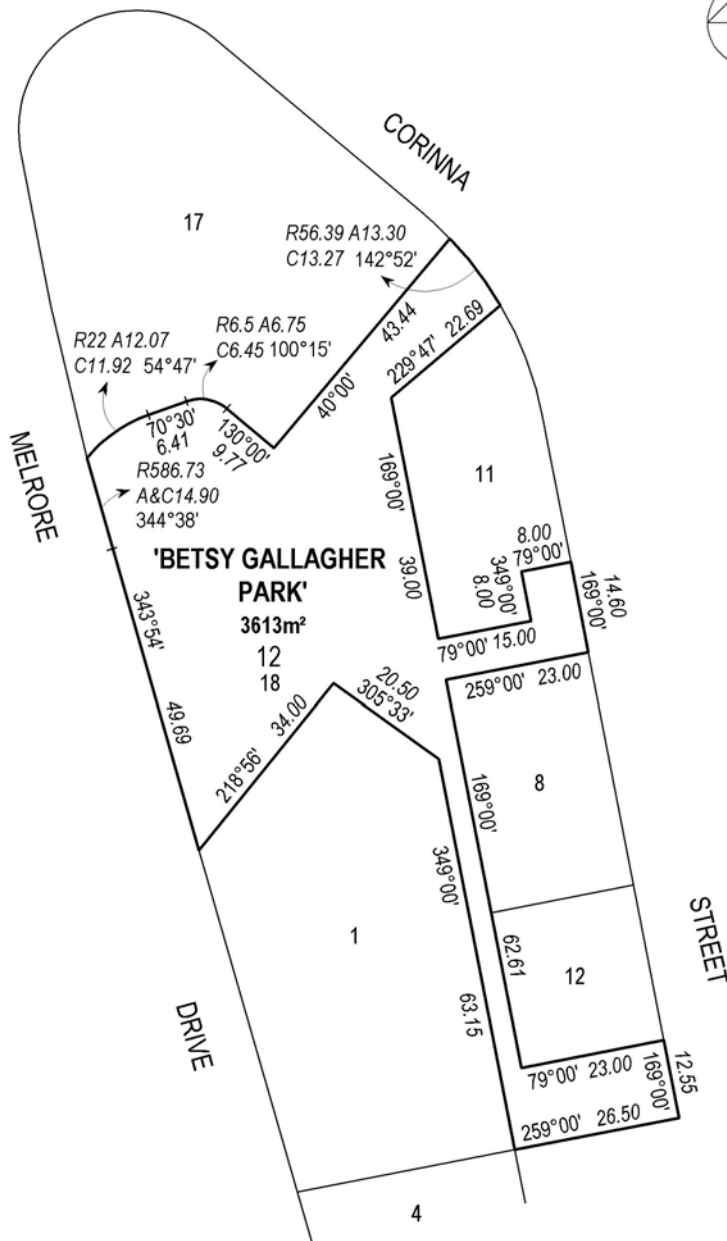
24 June 2007

SCHEDULE

Public Place Names (Phillip) Determination 2007 (No 1)

Division of Phillip

NAME	ORIGIN	SIGNIFICANCE
Betsy Gallagher Park	Betsy Gallagher (1943-2005)	<p>Community Service to Canberra</p> <p>Betsy Gallagher was born in Ecuador in 1943. She trained as a nurse in London and worked as a nurse in New Zealand before moving to Australia.</p> <p>Betsy was the former Director of Woden Community Service Inc. She worked for the Service for 25 years – 10 years in the family day care program and the following 15 years as the Service’s Director.</p> <p>Betsy was a vocal member of the community sector on many issues, particularly in relation to ensuring the provision of appropriate services for people who are seen as having a disability.</p> <p>Betsy was instrumental in establishing the Family Day Care Award in the ACT. She was also elected Chairperson of the Canberra Association for Community Based Child Care. Betsy defended the rights of the home based child care workers and championed their cause.</p> <p>In 1995 Betsy lobbied for funds to provide a program for adolescents perceived as having a disability. Community Supported Respite is still operating and provides a vital service.</p> <p>Betsy had very strong commitment to migrants and refugees and actively worked to support them. She went to extraordinary lengths to ensure that migrants and refugees could access services they needed to settle in the ACT.</p>



DIVISION OF PHILLIP