

Road Transport (General) (Application of Road Transport Legislation) Declaration 2007 (No 2)

Disallowable instrument DI2007—200

made under the

Road Transport (General) Act 1999, s13 (Power to exclude vehicles, persons or animals from road transport legislation)

1 Name of instrument

This instrument is the *Road Transport (General) (Application of Road Transport Legislation) Declaration 2007 (No 2)*

2 Commencement

This instrument commences on 11 August 2007.

3 Declaration

I declare that the road transport legislation does not apply to ACT roads or road related areas used or impinged on by any competing vehicle participating in the BRM Silverstone Safari Rally on 11 August 2007.

This declaration has effect during the competitive special stages of the event.

Indicative start times and start control close times for vehicles participating in each competitive special stage of the event are set out in the attached Event Itinerary.

This declaration expires on 12 August 2007.

For this declaration, the following definitions apply:

Competing vehicle means:

Any vehicle used for participating in a special stage of the event.

Event means:

2007 BRM Silverstone Safari Rally on 11 August 2007.

Special stage means:

The period from the time when an event official declares a special stage active for rally competition until the time when an event official declares course control for that special stage closed.

The competitive routes for the following special stages shown on the attached maps:

- Special stage 1 – Greenhills Forest;
- Special stage 2 – Hyles Forest 1;
- Special stage 3 – East West and Sherwood Forests 1;
- Special stage 4 – Murray’s Corner Forest 1;
- Special stage 5 – Pierces Creek and Tidbinbilla Forests 1;
- Special stage 6 – Hyles Forest 2;
- Special stage 7 – East West and Sherwood Forests 2;
- Special stage 8 – Pierces East Forest;
- Special stage 9 – Murray’s Corner Forest 2; and
- Special stage 10 – Pierces Creek and Tidbinbilla Forests 2.

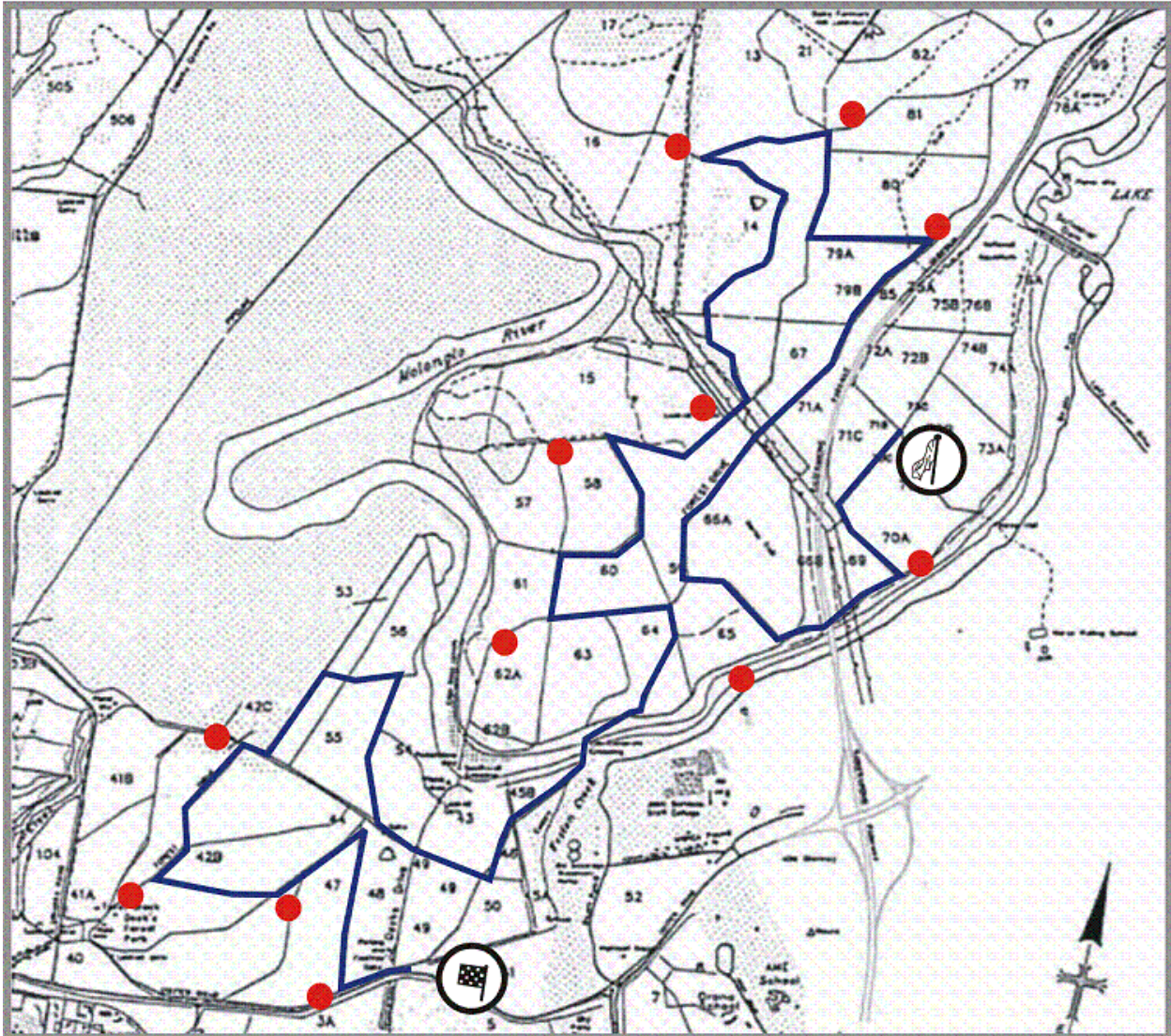
John Hargreaves MLA

Minister for Territory and Municipal Services

1 August 2007

Greenhills Forest

“Wookiee” Stage



Key:

RC	●
SOS	●
START	🚩
FINISH	🚩

Hyles Block Forest

“Jabba” Stage

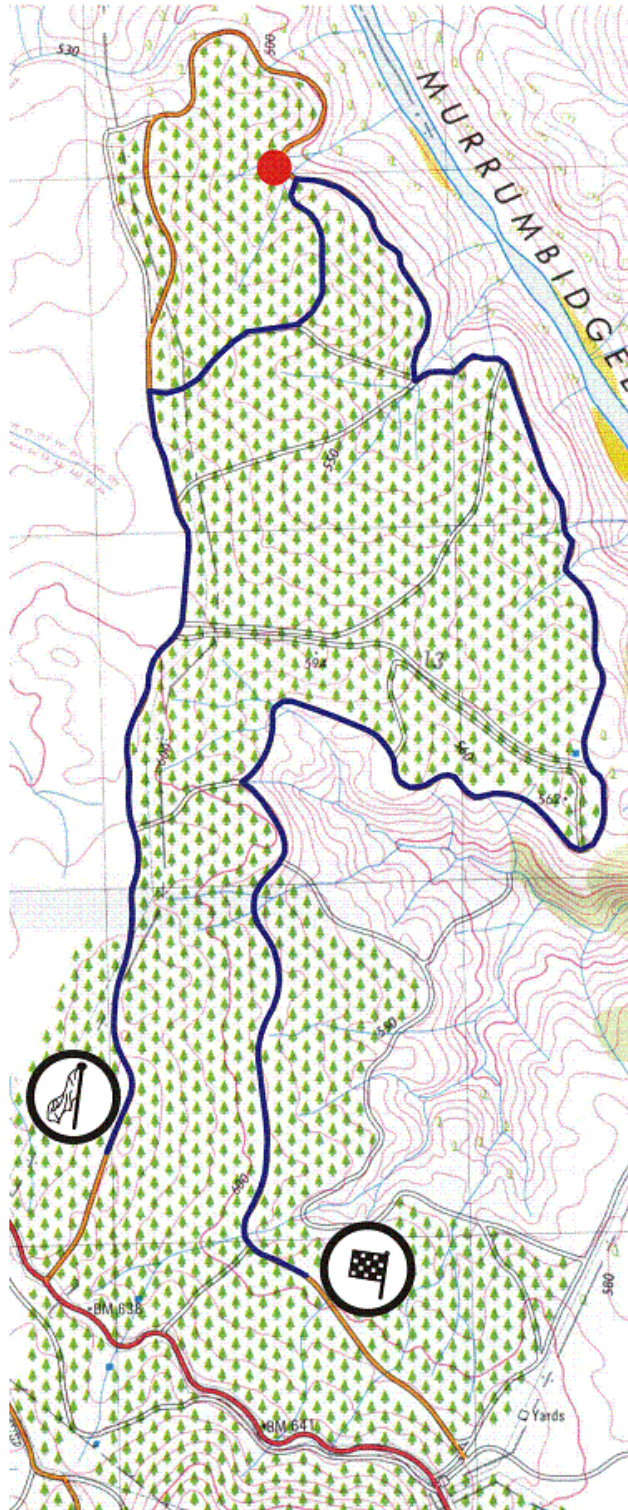
Key:

RC

SOS

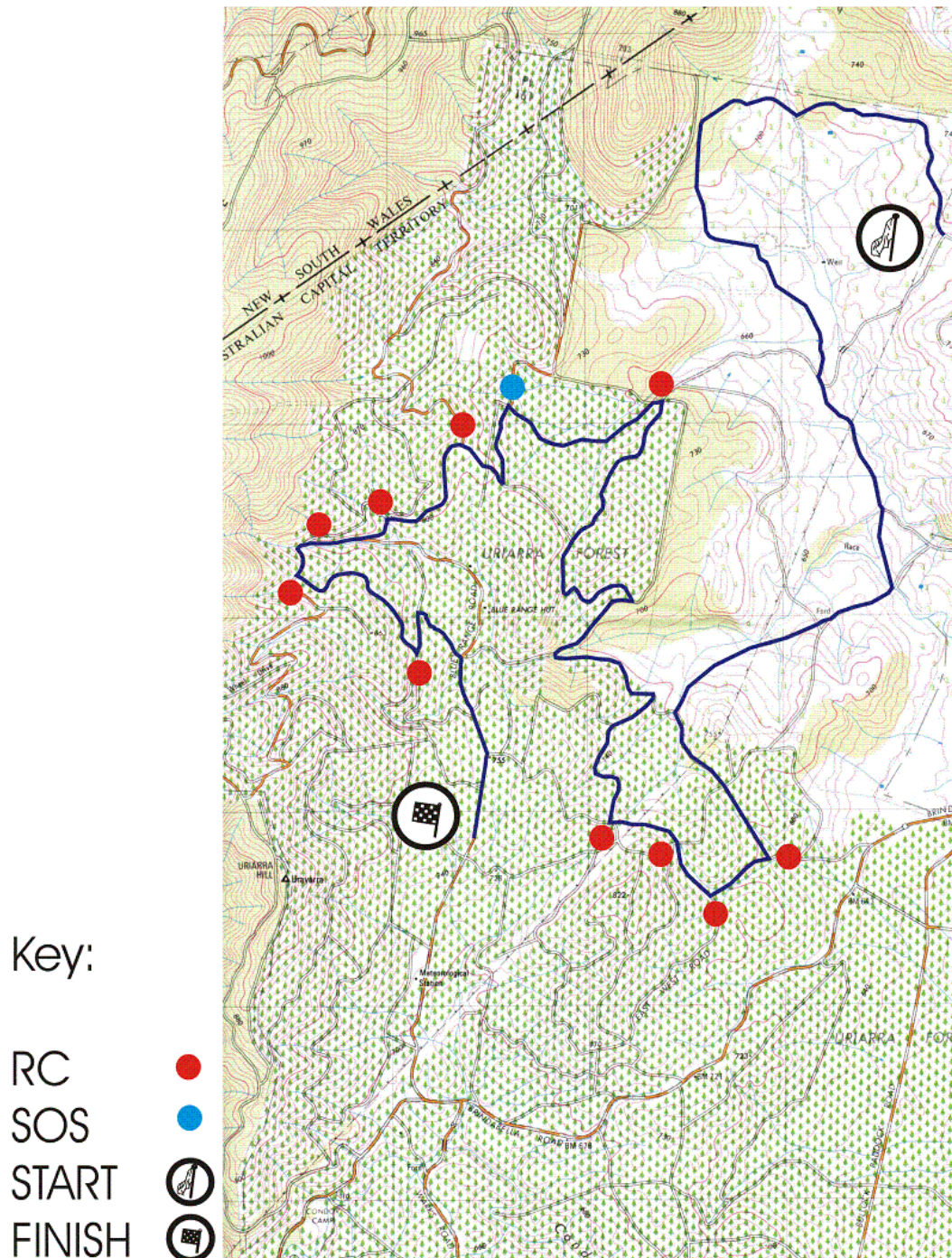
START

FINISH



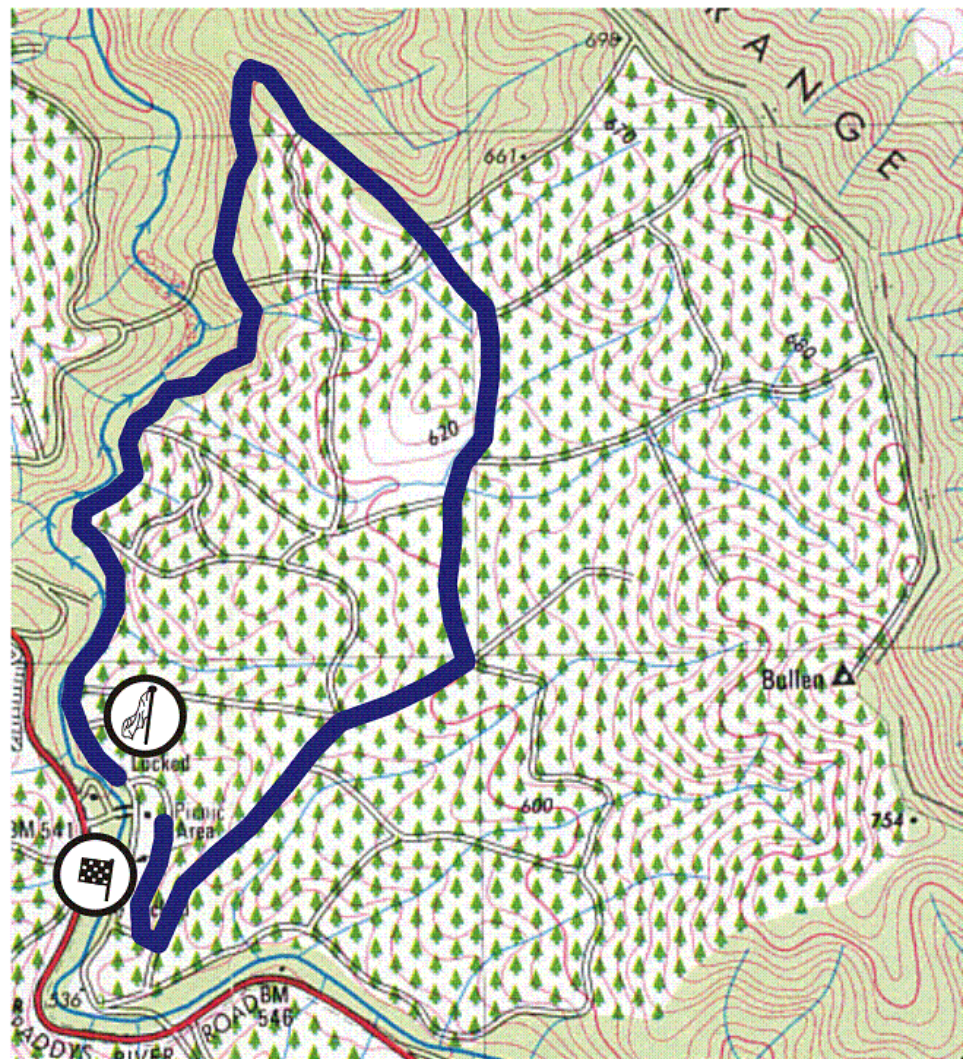
East West and Sherwood Forests

“Boba Fett” Stage



Murray's Corner Forest

"Yoda" Stage



Pierces East Forest “Calrissian” Stage

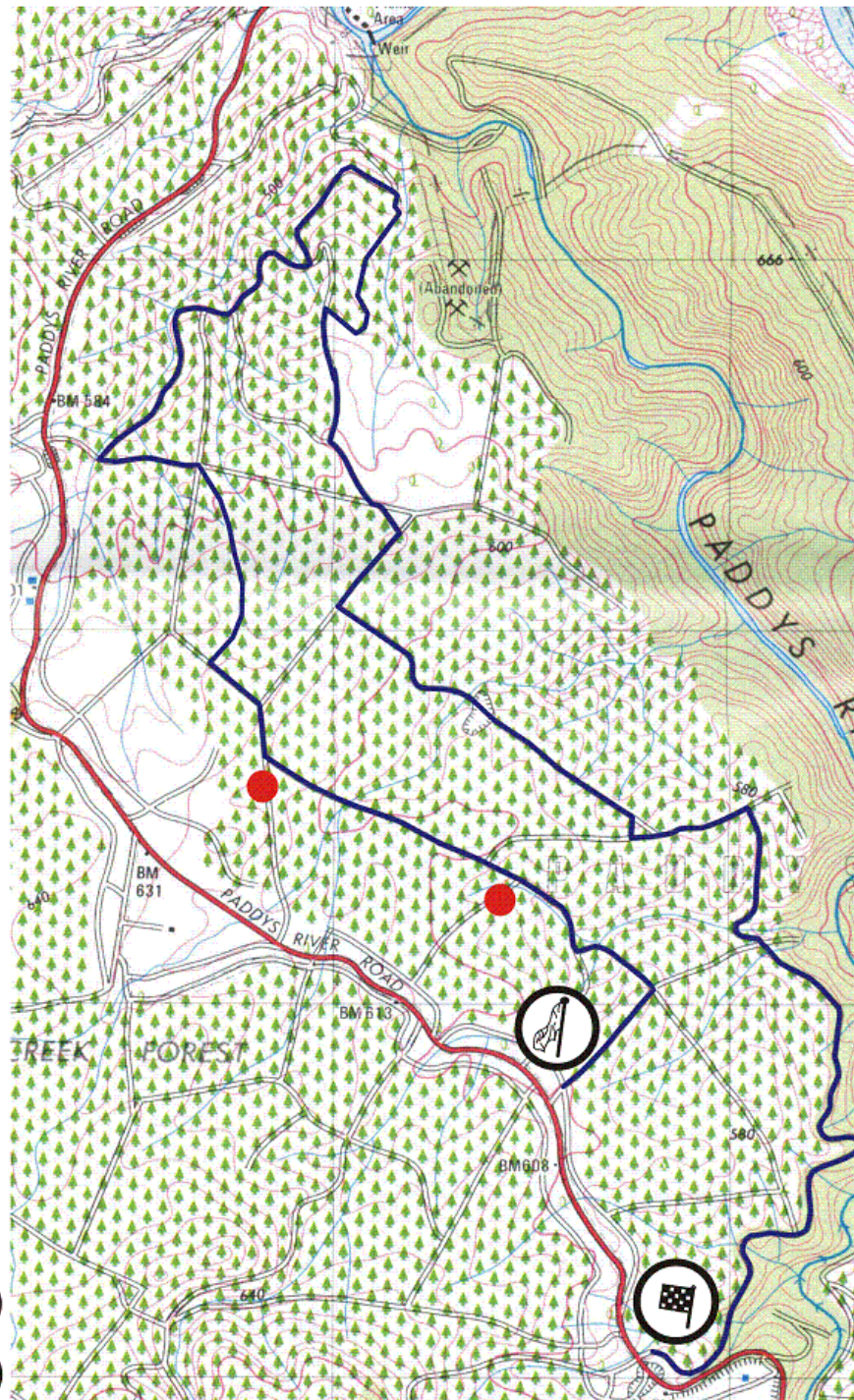
Key:

RC

SOS

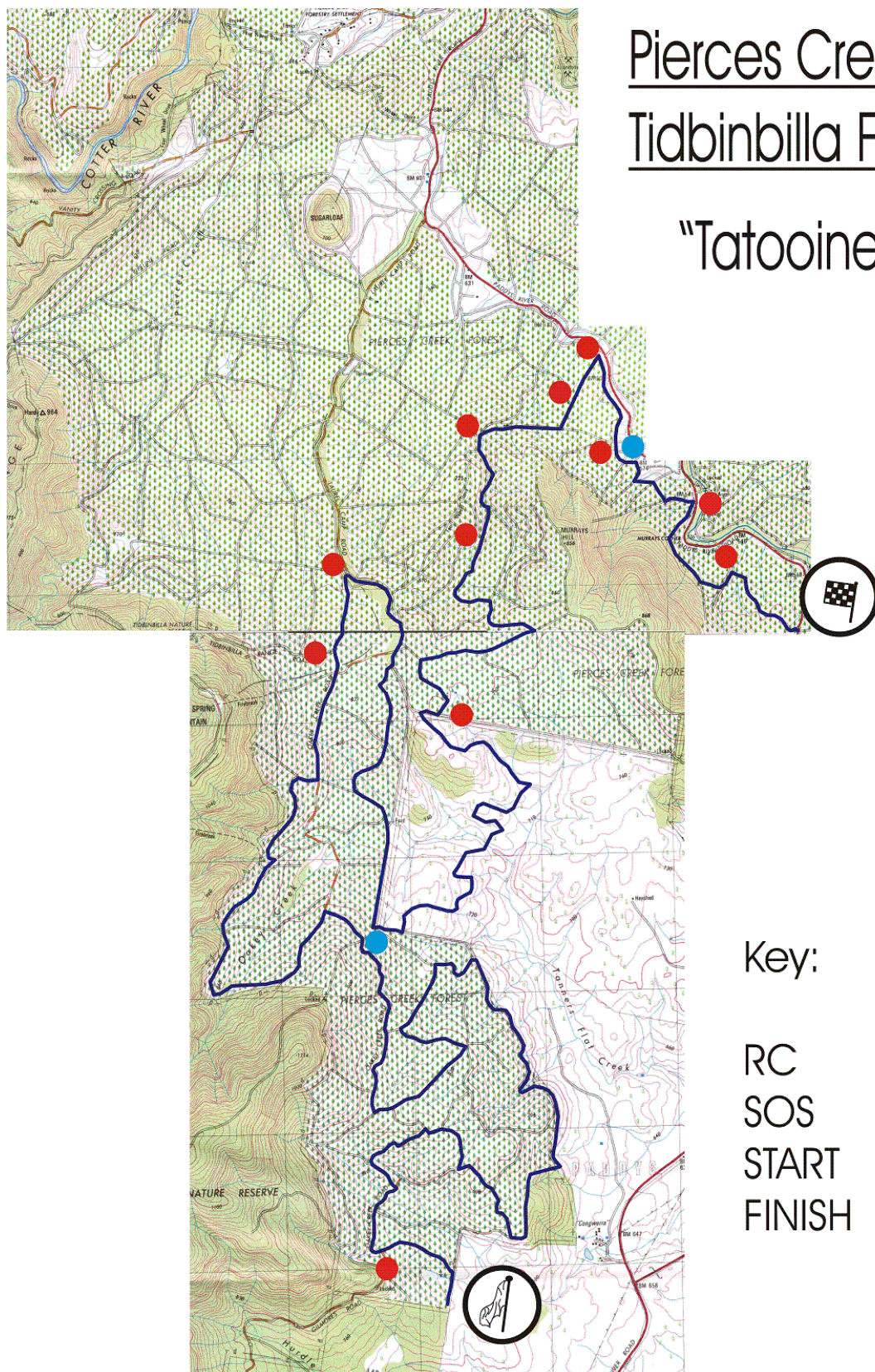
START

FINISH



Pierces Creek and Tidbinbilla Forests

“Tatooine” Stage





2007 BRM Silverstone Safari Rally - Event Itinerary

TC	Stage Number & Name	Competitive Distance (km)	Liaison Distance	Total Distance	Service Time (h:min)	Time Allowed incl. Service	000	00	0	Car 1	Car 60	Control Closes	Average Speed (kph)
Section 1													
1.1	Liaison - Start	0.00	11.80	11.80	0:00	0:20	9:45	10:00	10:15	10:30	12:28	13:08	35.40
1.2	SS1 Greenhills	14.11	17.25	31.36	0:00	0:47	10:08	10:23	10:38	10:53	12:51	13:31	40.03
1.3	SS2 Hyles I	9.71	8.96	18.67	0:00	0:24	10:58	11:13	11:28	11:43	13:41	14:21	46.68
1.4	SS3 East West I	17.10	21.77	38.87	0:25	1:15	11:25	11:40	11:55	12:10	14:08	14:48	46.64
1.5	SS4 Murrays Corner I	4.21	10.15	14.36	0:00	0:21	12:43	12:58	13:13	13:28	15:26	16:06	41.03
1.6	SS5 Tidbinbilla I	30.90	17.33	48.23	0:40	1:37	13:07	13:22	13:37	13:52	15:50	16:30	50.77
1.7	SS6 Hyles II	9.71	8.96	18.67	0:00	0:24	14:47	15:02	15:17	15:32	17:30	18:10	46.68
1.8	SS7 East West II	17.10	8.41	25.51	0:10	0:40	15:14	15:29	15:44	15:59	17:57	18:37	51.02
1.9	Regroup In	0.00	0.00	0.00	0:00	0:20	15:57	16:12	16:27	16:42	18:40	19:20	0.00
Section 2													
2.1	Regroup Out	0.00	11.71	11.71	0:00	0:15	16:17	16:32	16:47	17:02	19:00	19:40	46.84
2.2	SS8 Pierces East	8.75	0.78	9.53	0:00	0:12	16:35	16:50	17:05	17:20	19:18	19:58	47.65
2.3	*SS9 Murrays Corner II	4.21	10.15	14.36	0:00	0:25	16:50	17:05	17:20	17:35	19:33	20:13	34.46
2.4	SS10 Tidbinbilla II	30.90	27.62	58.52	0:00	1:12	17:18	17:33	17:48	18:03	20:01	20:41	48.77
2.5	Finish						18:30	18:45	19:00	19:15	21:13	21:53	43.39
TOTAL		146.70	154.89	301.59	1:15	8:12							

2 minute gaps for the entire event

* Includes 5min Optional Refuel at Tidbinbilla Lane