

# Road Transport (General) (Application of Road Transport Legislation) Declaration 2009 (No 5)

Disallowable instrument DI2009—229

made under the

*Road Transport (General) Act 1999*, section 12 (Power to include or exclude areas in road transport legislation)

---

## 1 Name of instrument

This instrument is the *Road Transport (General) (Application of Road Transport Legislation) Declaration 2009 (No 5)*.

## 2 Commencement

This instrument commences on 20 November 2009.

## 3 Declaration

I declare that the road transport legislation does not apply to a road or road related area that is a special stage of the 2009 National Capital Rally.

## 4 Period of effect of declaration

The declaration has effect on 20 and 21 November 2009 in relation to a special stage for the event for any period beginning when an event official declares (however described) the stage active for a testing session, a media event or rally competition and ending when an event official declares (however described) the stage inactive.

## 5 Definitions

In this instrument:

**event** means the 2009 National Capital Rally.

**special stage**, for the event, means a road or road related area identified for the event on the attached maps:

- Media Day;
- Special Stage 1 – Castrol Corner;
- Special Stage 2 – Old Kowen Road I;

- Special Stage 3 – Wamboin I;
- Special Stage 4 – Charcoal Kiln I;
- Special Stage 5 – Old Kowen Road II;
- Special Stage 6 – Wamboin II;
- Special Stage 7 – Charcoal Kiln II;
- Special Stage 8 – Bluetts;
- Special Stage 9 - Greenhills.

## **6 Expiry**

This instrument expires on 22 November 2009.

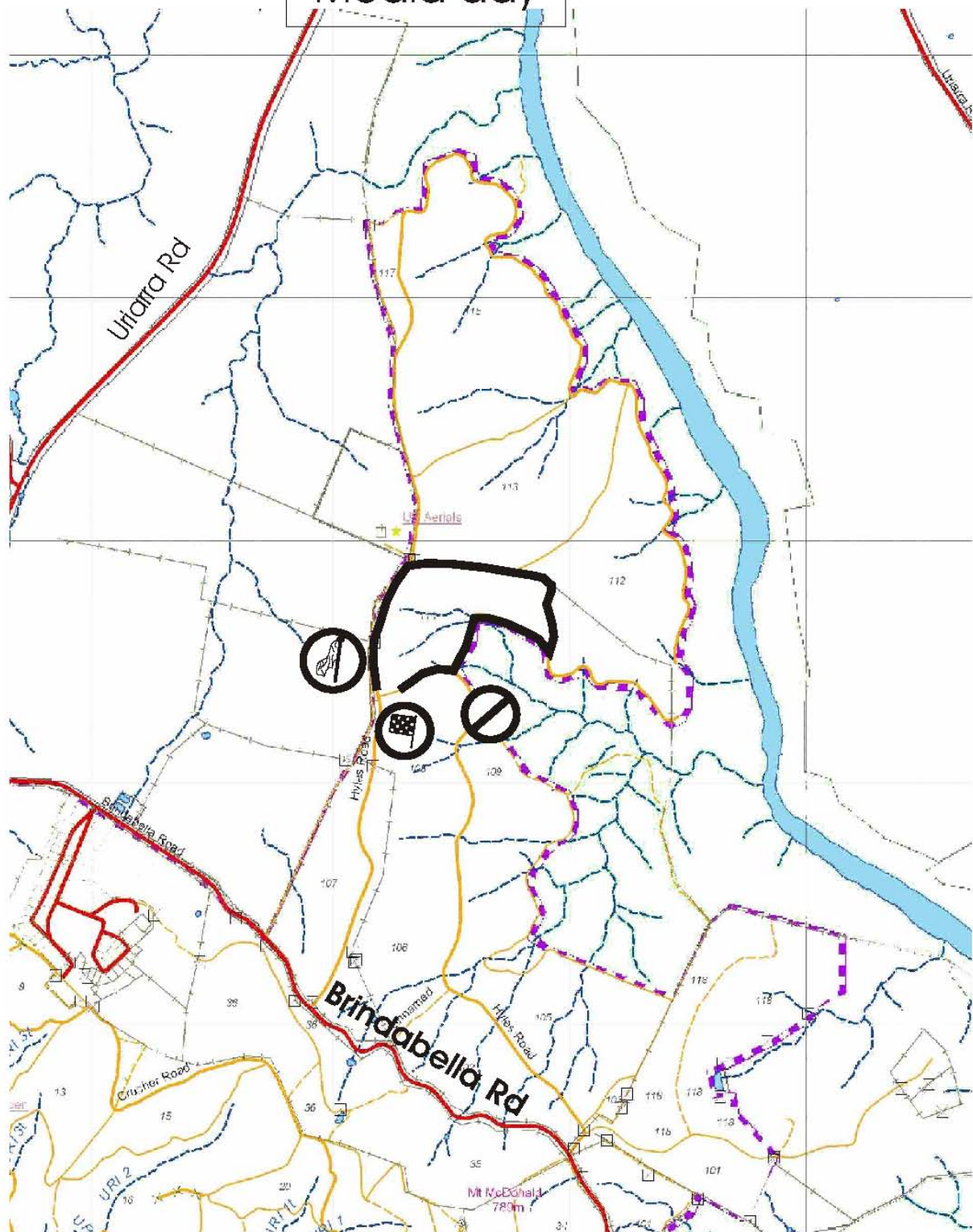
Jon Stanhope  
Minister for Transport  
16 November 2009

Itinerary														
2009 NATIONAL CAPITAL RALLY														
21/11/2009														
	Stage Name	Dist in Kms	Comp in Kms	Service Time minutes	Speed Time Allowed	Time Allowed	Ave. Speed	Course Car	"000"	"00" Closed to Stewards	"0"	Start Time Car 1	Start Time Car 50	Start Control Close
TC: 0	Liaison 1	8.98	0.00		5	0:10	107.76	10:15	10:30	10:55	11:15	11:30	13:08	13:28
TC: 1	Castrol Corner SS 1	42.81	12.71		55	0:55	46.70	10:43	10:43	11:08	11:28	11:43	13:21	13:41
TC: 2	Old Kowen Road I SS 2	37.80	14.11	20	60	1:00	37.80	12:06	11:41	12:06	12:26	12:41	14:19	14:39
TC: 3	Wamboin I SS 3	22.44	21.42		30	0:30	44.88	13:19	12:44	13:09	13:29	13:44	15:22	15:42
TC: 4	Charcoal Kiln I SS 4	25.70	20.08	20	50	1:00	30.84	14:02	13:17	13:42	14:02	14:17	15:55	16:15
TC: 5	Old Kowen Road II SS 5	37.80	14.11	20	60	1:00	37.80		14:20	14:45	15:05	15:20	16:58	17:18
TC: 6	Wamboin II SS 6	22.44	21.42		30	0:30	44.88		15:23	15:48	16:08	16:23	18:01	18:21
TC: 7	Charcoal Kiln II SS 7	25.70	20.08	20	50	0:50	30.84		15:56	16:21	16:41	16:56	18:34	18:54
TC: 7A	Regroup	maximum time will be				0:20			16:49	17:14	17:34	17:49	19:27	19:47
TC: 7B	Liaison 2	38.35	0.00		40	0:40	57.53	18:12	17:12	17:37	17:57	18:12	19:50	20:10
TC: 8	Bluetts SS 8	19.58	13.12		25	0:25	46.99	18:55	17:55	18:20	18:40	18:55	20:33	20:53
TC: 9	Greenhills SS 9	30.00	25.04		35	0:35	51.43	19:23	18:23	18:48	19:08	19:23	21:01	21:21
TC: 10	Weston Finish							19:58	18:58	19:23	19:43	19:58	21:36	21:56
TOTAL KM		311.60	162.09											
ACT series event		262.02	123.93											

# '09 Truss Me National Capital Rally

## Friday 20th Nov 1200hrs till 1430

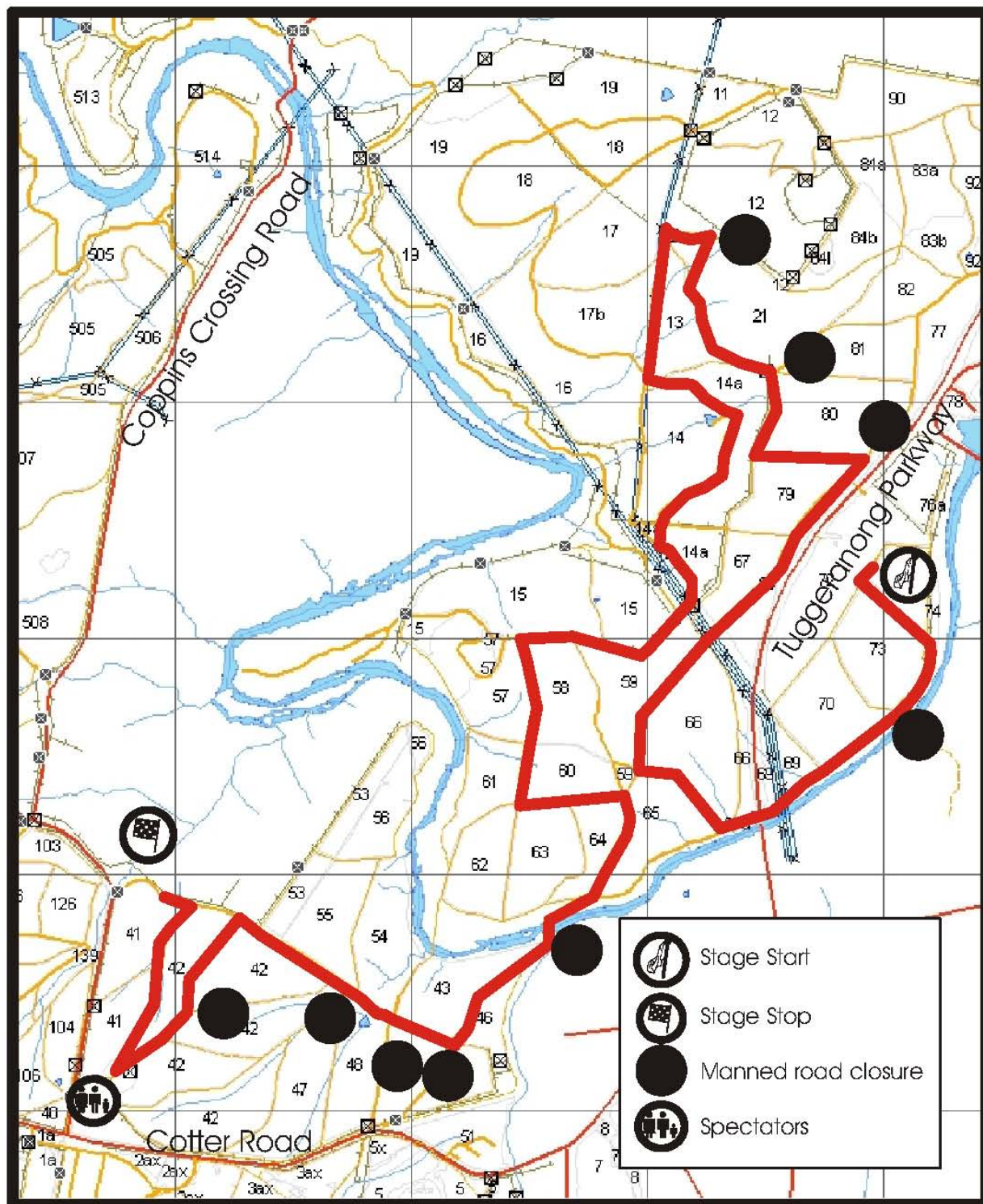
Media day





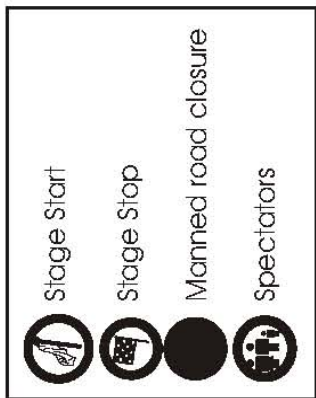
# 2009 National Capital Rally

## SS 1 Castrol Corner





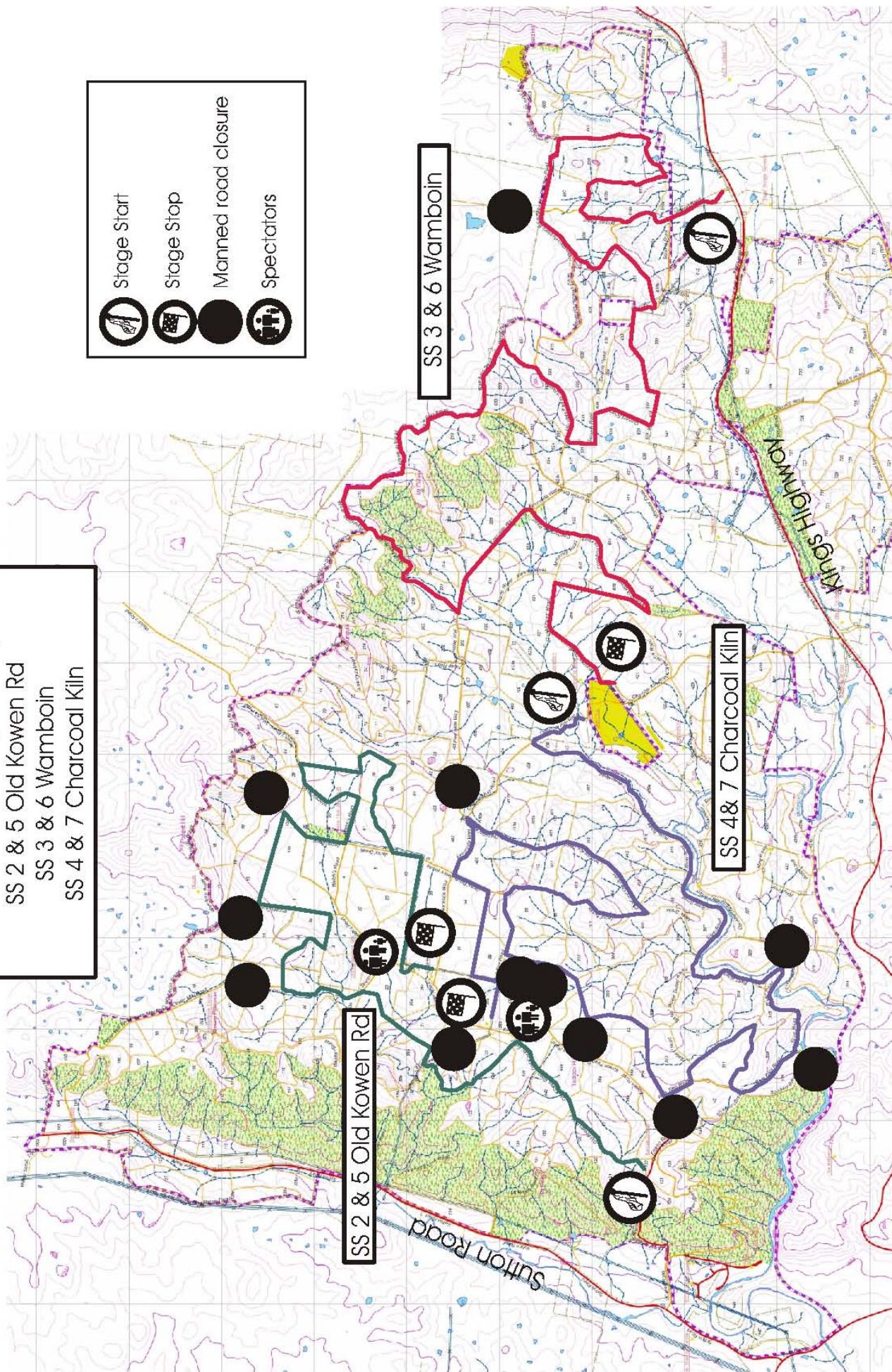
2009 National Capital Rally  
 SS 2 & 5 Old Kowen Rd  
 SS 3 & 6 Wamboin  
 SS 4 & 7 Charcoal Kiln



SS 2 & 5 Old Kowen Rd

SS 3 & 6 Wamboin

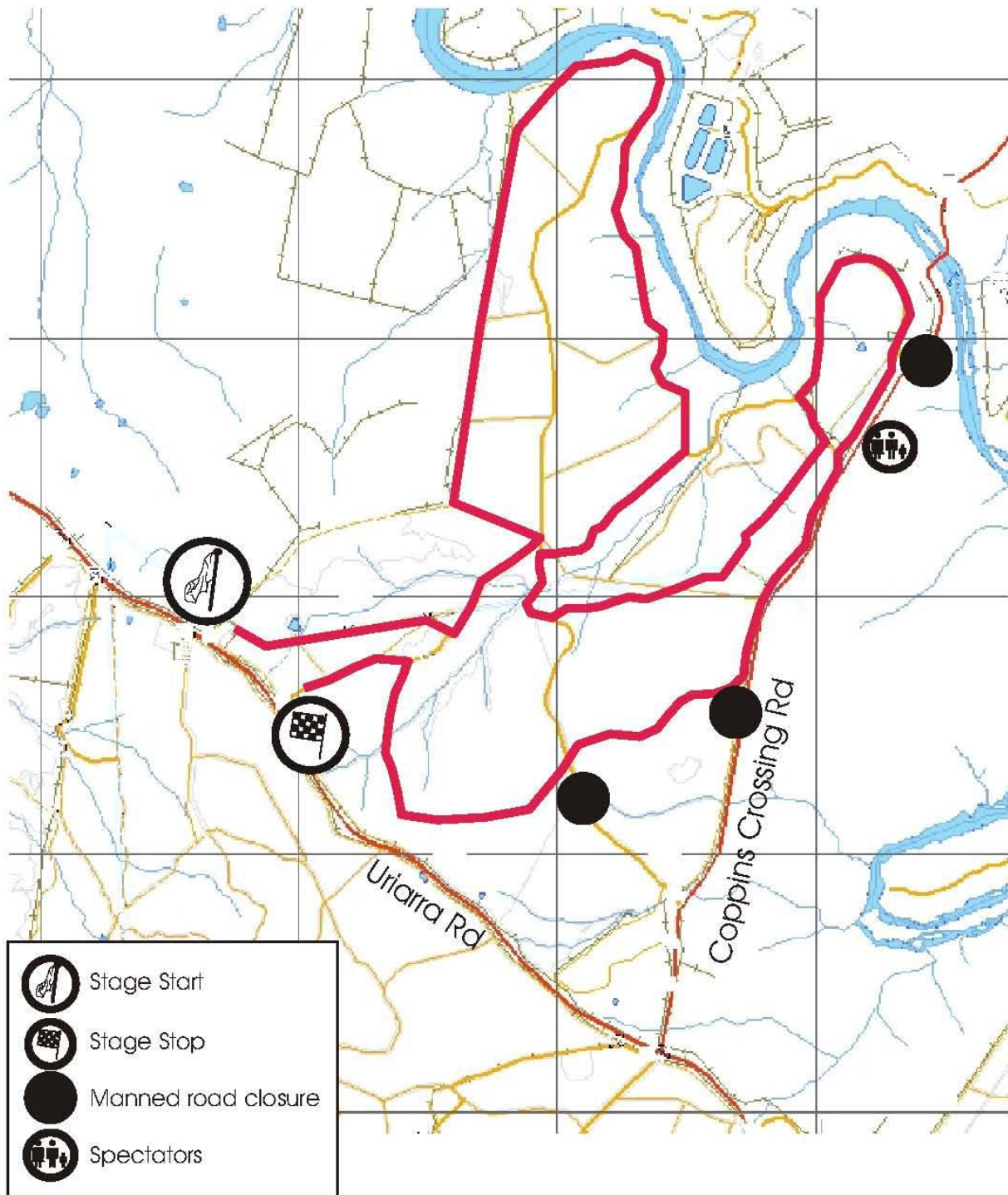
SS 4 & 7 Charcoal Kiln





# 2009 National Capital Rally

## SS 8 Bluetts



# 2009 National Capital Rally

## SS 9 Greenhills

