

# Road Transport (Dimensions and Mass) B-Double, 4.6 Metre High Vehicle and 14.5 Metre Long Bus Exemption Notice 2009 (No 1)

Disallowable Instrument DI2009—28

made under the

*Road Transport (Dimensions and Mass) Act 1990, s 31A (Exemptions)*

---

## 1 Name of instrument

This instrument is the Road Transport (Dimensions and Mass) B-Double, 4.6 Metre High Vehicle and 14.5 Metre Long Bus Exemption Notice 2009 (No 1).

## 2 Commencement

This instrument commences on the day after notification.

## 3 Vehicle exemption

Under section 31A (1) of the *Road Transport (Dimensions and Mass) Act 1990* (the Act), I exempt a B-Double, a vehicle up to but not exceeding 4.6 metres in height and a bus with an overall length of greater than 12.5 metres but not exceeding 14.5 metres, that complies with and is operated in accordance with the conditions set out in the schedule attached to this exemption notice, from the requirements of sections 9 and 24 of the Act.

## 4 Driver exemption

Under section 31A (2) of the Act, I exempt a person who holds a current driver licence authorising him or her to drive a B-Double, a vehicle not exceeding 4.6 metres in height, or a bus with an overall length of greater than 12.5 metres but not exceeding 14.5 metres from compliance with section 37 (2) of the Act, in so far as that section relates to a B-Double to which this exemption notice, or a permit issued under section 27 (1) of the Act that is in force, applies.

In this exemption notice:

- 'authorised person' is a person appointed as an authorised person under Section 19 of the *Road Transport (General) Act 1999* for a provision of the *Road Transport (Dimensions and Mass) Act 1990*.

- *'bus'* means a motor vehicle built mainly to carry passengers that seats over nine (9) people (including the driver).
- *'controlled access bus'* means a bus, except an articulated bus, over 12.5 metres but no more than 14.5 metres in length.
- *'dangerous goods'* means any substance or article prescribed as a dangerous good under the *Australian Code for the Transport of Dangerous Goods by Road and Rail* endorsed by the Australian Transport Council.
- *'heavy vehicle'* means a motor vehicle or trailer with a GVM of more than 4.5 tonnes.
- *'standards for registration'* means the standards prescribed by the road transport law, or the road transport law of a State or another Territory, for vehicle registration.
- *'trailed length'* in relation to a B-Double means the combined length of both trailers in the combination measured from the centreline of the king-pin of the first trailer to the rear of the second trailer.

All other relevant legislation related to the operation of vehicles to which this notice is applicable must be adhered to.

## **5 Revocation**

I revoke disallowable instrument number DI 2006-118 as notified on 29 June 2006.

Jon Stanhope  
Minister for Transport

5 March 2009

# **SCHEDULE TO THE 62.5 TONNE B-DOUBLE, 4.6 METRE HIGH VEHICLE AND 14.5 METRE LONG BUS EXEMPTION NOTICE**

## **Applicable Vehicles**

The conditions of this exemption notice and any applicable standards for registration, including the Australian Design Rules, apply to the following vehicles operating in the Australian Capital Territory.

- a) B-Doubles with a gross mass limit not exceeding 62.5 tonnes gross combination mass with a maximum height of 4.6 metres, width of 2.5 metres and length of 25 metres or 26 metres with specific attributes that comply with the Regulations made under the United Nations Economic Commission for Europe Agreement for a front under-run protection system (*UN ECE R93*) and for cabin strength (*UN ECE R29*), and where the distance between the centre line of the kingpin on the first trailer and the rear of the second trailer does not exceed 20.6 metres.
- b) All vehicles of up to 4.6 metres in height, operating at regulated mass and length limits.
- c) Buses with an overall length of greater than 12.5 metres but which are no longer than 14.5 metres.

## **Conditions applying to the operation of B-Doubles with a gross mass limit not exceeding 62.5 tonnes gross combination mass, vehicles not exceeding 4.6 metres in height and controlled access buses in the Australian Capital Territory**

### **Part 1 – Travel Requirements**

- 1.1.1 Vehicles of the dimensions and mass limits to which this exemption notice applies may operate only on approved routes and must observe any condition that applies to an approved route.
- 1.1.2 Deviation from approved routes is not permitted except in emergencies. Where a route deviation has occurred due to an emergency, the driver of the vehicle must notify a police officer or an authorised person as soon as possible.

### **Part 2 – Operating Conditions and Restrictions**

#### **2.1 General**

- 2.1.1 A copy of this exemption notice must be carried in the driving compartment whenever the vehicle is operating as part of a B-Double, a controlled access bus or is another vehicle to which this notice applies. This must be produced when requested by a police officer or authorised person.
- 2.1.2 All requirements and conditions of this exemption notice are to be observed when a vehicle is operating as part of a B-Double, a vehicle not exceeding 4.6 metres in height or a controlled access bus.
- 2.1.3 Except as provided by this exemption notice, a vehicle operating as part of a B-Double, a vehicle more than 4.3 metres but not exceeding 4.6 metres in height or a controlled access bus must comply with the statutory requirements of the Act.
- 2.1.4 The prime mover and semi-trailers of a B-Double, a vehicle not exceeding 4.6 metres in height or a controlled access bus must be constructed to comply with the applicable

standards for registration, including the Australian Design Rules, unless otherwise stated.

2.1.5 All vehicles used in a B-Double, a vehicle not exceeding 4.6 metres in height or a controlled access bus must be registered in a State or Territory of the Commonwealth or under the Federal Interstate Registration Scheme.

2.1.6 The load limits set by this exemption notice must not be exceeded.

## 2.2 Braking Requirements

All vehicles to which this notice applies should refrain from braking, where possible, on the following bridges in the ACT. Additionally, a speed limit of 10 kilometres per hour is recommended for vehicles to which this notice applies on the following bridge:

- None listed at present.

## Part 3 – Mass and Dimension Limits

### 3.1 Maximum Limits for Axles and Axle Groups

3.1.1 The maximum axle mass limits for a B-Double or other vehicle to which this notice applies must be the lowest of:

- |    |  |                     |
|----|--|---------------------|
| a) | Single steering axle   | - 6.0 tonnes gross  |
|    | Twinsteer axle group; non load sharing   | - 10 tonnes gross   |
|    | Twinsteer axle group; load sharing   | - 11 tonnes gross   |
|    | Single axle consisting of 4 tyres  | - 9.0 tonnes gross  |
|    | Tandem axle consisting of 6 tyres with air suspension                                | - 14 tonnes gross   |
|    | Tandem axle consisting of 6 tyres without air suspension                             | - 13 tonnes gross   |
|    | Tandem axle consisting of 8 tyres  | - 16.5 tonnes gross |
|    | Tri-axle group consisting of 12 tyres  | - 20.0 tonnes gross |
|    | Tri-axle group consisting of 6 tyres with section widths of at least 375 millimetres | - 20.0 tonnes gross |
| b) | The manufacturer's axle group load rating; or  |                     |
| c) | The sum of the mass limits for the tyres fitted to the axles and axle groups.        |                     |

### 3.2 Maximum Gross Mass Limits

3.2.1 The maximum gross mass limit for a B-Double must be the lowest of:

- The sum of the applicable axle and axle group mass limits in clause 3.1.1 (a);
- The sum of the manufacturers' mass limits (GVM) for the prime mover and semi-trailer;
- The gross combination mass limit (GCM) specified by the prime mover manufacturer; or
- 62.5 tonnes.

3.2.2 The maximum gross mass limit for a vehicle or combination not exceeding 4.6 metres in height must be the lowest of:

- The sum of the applicable axle and axle group mass limits in clause 3.1.1 (a);

- b) The sum of the manufacturers' mass limits (GVM) of each vehicle in a combination; or
- c) The gross combination mass limit (GCM) specified by the prime mover or towing vehicle manufacturer.

3.2.3 The maximum gross mass limit for a controlled access bus is the lesser of the statutory axle mass limits and the gross vehicle mass of the bus.

### **3.3 Maximum Dimension Limits**

3.3.1 A B-Double to which this notice applies must not be more than 25 metres long unless it complies with the conditions stated in clause 3.3.2, 3.3.3, 4.3, 4.4 and 4.5.

3.3.2 A B-Double is permitted to operate at a length of 26 metres, if the laden and unladen dimensions of the vehicle (including any fittings) do not exceed 26 metres and the distance from centreline of the king-pin of the first trailer to the rear of the combination do not exceed 20.6 metres.

3.3.3 B-Doubles carrying loads of livestock or motor vehicles are permitted to operate at 26 metres. The dimension limits of a trailer, (other than a pig trailer), built to carry cattle, sheep, pigs or horses on 2 or more partly or completely overlapping decks must not have more than 12.5 metres of its length available for the transport of animals.

### **3.4 Mass Limits Relating to Axle Spacing**

3.4.1 For any B-Double, the mass limits in Table 1 must not be exceeded in relation to the distances set out in that Table that apply to the B-Double or any vehicle forming part of it.

3.4.2 For any B-Double, the mass limits in section (c) of Table 1 apply to the sum of the masses of each axle group or single axle in the distance referred to in the Table, including the axles between which the distance is measured.

3.4.3 For all vehicles of up to 4.6 metres in height other than B-Doubles, normal mass limits apply and conditions specified under a relevant Exemption Notice, or Permit that is issued under section 30 of the *Road Transport (Dimensions and Mass) Act 1990*, are applicable.

### 3.5 Spacing Rules

3.5.1 A B-Double with two tri-axle groups must conform to the formule:

$$x - y \leq 1 \text{ and } y - x \leq 1.3$$

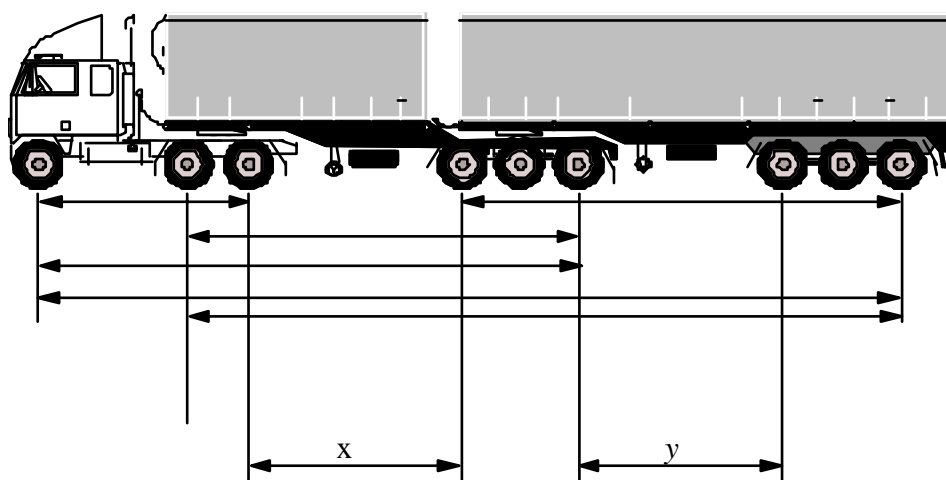
where:

Treating the steer axles as the first axle group and assigning to the next rearmost axle group the description 'second axle group', and to each successive axle group a higher ordinal number –

**x** is the distance in metres between the centres of the closest axles of the second and third axle groups; and

**y** is the distance in metres between the centres of the closest axles of the third and fourth axle groups,

Figure 1



- 3.5.2 For B-Doubles other than those referred to in clause 3.5.1, the distance between the centres of tandem axle groups must not be less than 6 metres and the distance between the centres of the tandem and tri-axle groups must not be less than 7 metres.
- 3.5.3 The distance between the axles closest to each other in any adjacent multi-axle groups in a B-Double must not differ from the distance between the axles closest to each other in any other adjacent multi-axle groups by more than one metre.
- 3.5.4 The total mass of a vehicle or combination, and any load, must not exceed 15 tonnes if the distance between any two axles that are not part of the same axle group is less than 2.5 metres.

### 3.6 Measurement of Distances for Table 1

3.6.1 Each distance in Table 1 refers to :

- a) The distance from the centre of any single axle to the centre of any other single axle;
- b) The distance from the centre of any single axle to the centre of the furthest axle in any axle group; or
- c) The greatest distance between the centres of axles in any two axle groups.

**Table 1 – Mass limits relating to axle spacings – B-Doubles**

(A)

<ul style="list-style-type: none"> <li>• For any B-Double, the loaded mass of which can lawfully exceed 42.5 tonnes where the distance between the extreme axles is less than 21 metres, the mass limit must not exceed that calculated in accordance with the formula opposite.</li> </ul>	<p style="text-align: center;"><b><math>M = 1.5L + 29.5</math></b></p> <p>where:</p> <ul style="list-style-type: none"> <li>• <b>M</b> is the mass limit in tonnes; and</li> <li>• <b>L</b> is the distance in metres.</li> </ul>
---	---

(B)

<ul style="list-style-type: none"> <li>• For any B-Double, the loaded mass of which can lawfully exceed 42.5 tonnes where the distance between the extreme axles is not less than 21 metres, the mass limit must not exceed that specified opposite.</li> </ul>	<p style="text-align: center;"><b>62.5 tonnes</b></p>
---	---

(C)

<ul style="list-style-type: none"> <li>• For all B-Doubles, the axle loads of the axles in any two or more adjacent axle groups (or of any single axle and the axles in one or more adjacent axle groups) must not exceed that calculated in accordance with the formula opposite.</li> </ul>	<p style="text-align: center;">a) <b><math>M = 3L + 12.5</math></b></p> <p>where:</p> <ul style="list-style-type: none"> <li>• <b>M</b> is the mass limit in tonnes; and</li> <li>• <b>L</b> is the distance in metres between the centre of the axle groups being considered, that is less than or equal to 11.33 metres.</li> </ul> <p style="text-align: center;">b) <b><math>M = 1.5L + 29.5</math></b></p> <p>where:</p> <ul style="list-style-type: none"> <li>• <b>M</b> is the mass limit in tonnes; and</li> <li>• <b>L</b> is the distance in metres between the centre of the axle groups being considered, that is greater than 11.33 metres.</li> </ul>
---	--

## Part 4 – B-Double Standards and Specifications

### 4.1 Power of B-Double Prime Mover

- 4.1.1 The minimum power required of a prime mover must be 300 kilowatts unless 4.1.2 applies.
- 4.1.2 Where it is demonstrated to the Road Transport Authority that the vehicle is capable of starting movement on a 12% gradient, and is capable of maintaining a constant speed of 70 km/h on a 1% gradient when operating at the nominated Gross Combination Mass (GCM), the minimum power of a prime mover can be less than 300 kilowatts.
- 4.1.3 If the manufacturer of a motor vehicle forming part of a B-Double has not determined the GCM of the vehicle, the total mass of the combination and any load must not exceed the number of kilograms worked out using the following formula:

$$\text{Mass in kilograms} = \frac{K \times M \times R \times T}{16}$$

where:

**K** means:

- a) **0.055** if a single drive axle is fitted to the motor vehicle;
- b) **0.053** if a single drive tandem axle is fitted to the motor vehicle; or
- c) **0.051** if a dual drive tandem axle group is fitted to the motor vehicle.

**M** means the number of tyre revolutions per kilometre as specified by the tyre manufacturer for the tyres fitted to the driving axle or axles.

**R** means the overall gear reduction between engine and wheels.

**T** means the maximum engine net torque in Newton-metres.

### 4.2 Tracking

- 4.2.1 When travelling in a straight line on a level, smooth surface, all units in a B-Double must track in the path of the prime mover without shifting or swerving more than 100 millimetres either side of the path of the prime mover.

### 4.3 Front Under-run Protection System

- 4.3.1 For a B-Double to operate at the dimension of 26 metres, the prime mover must be:
- a) A Front Under-run Protection Vehicle, which is fitted with an Approval Plate that is affixed on or near the drivers' door in a position clearly visible to, and readable by, a police officer or authorised person when the driver's door is open; or on the vehicle cabin near the vehicle identity (compliance) plate, in a position that is clearly visible to, and readable by, a police officer or authorised person; or
  - b) Be fitted with a Front Under-run Protection Device which is fitted with an Approval Plate that is clearly visible to, and readable by, a police officer or authorised person.
- 4.3.2 Any protrusion fitted to the front of a prime mover, must be fitted with an Approval Plate, that is clearly visible to, and readable by, a police officer or authorised person. The Approval Plate must stipulate that the protrusion is a Front Under-run Protection Device as outlined in 4.3.1 (b) or that the fitted protrusion does not negate the prime mover's compliance with 4.3.1.



**Note:** Protrusions covered by 4.3.2 are fittings such as 'Bull-bars', 'Roo-bars', 'Nudge-bars' 'Cow-catchers' etc. It does not include driving lights, fog lights, 'running' lights, aerials etc. To comply with 4.3, all vehicles will require an approval plate on their protrusion. Some vehicles may require two approval plates – one on the protrusion and one on the cab of the vehicle.

#### **4.4 Cabin Strength**

4.4.1 The prime mover, if manufactured after 31 December 2005, must comply with Regulation No. 29 made under the United Nations Economic Commission for Europe Agreement (UN ECE R29) for cabin strength.

4.4.2 A vehicle must be fitted with an Approval Plate that is affixed on or near the driver's door in a position clearly visible to, and readable by, a police officer or authorised person when the driver's door is open or on the vehicle cabin near the vehicle identity (compliance) plate, in a position that is clearly visible to, and readable by, a police officer or authorised person.

#### **4.5 Prime mover of a 26 metre B-Double combination must not have a load carrying area.**

4.5.1 The prime mover of a 26 metre B-Double combination must not have a load carrying area.

4.5.2 For the purposes of clause 4.5.1, a load does not include:

- a) The driver or passengers, or their personal items; or
- b) Fuel, water, lubricants, and readily removable equipment carried on or in the vehicle that is required for its normal operation.

## Part 5 – Approved Routes and Travel Conditions

### 5.1 Approved Routes and Travel Condition

- 5.1.1 A B-Double, controlled access bus or other vehicle to which this notice applies may operate on the approved routes listed in the Attachment.
- 5.1.2 The travel restrictions and conditions which apply to an approved route must be observed.

1. Routes currently approved are listed in the Attachment. Additional routes may be approved in the future. Operators may obtain details of these from the Road Transport Authority, Heavy Vehicle Permit Officer. (Contact details are listed at the back of the Schedule).
2. It is the responsibility of operators seeking approval of new routes to initiate contact with the Road Transport Authority.
3. Operators must apply to the Road Transport Authority, Heavy Vehicle Permit Officer, for a specific permit to travel on any route other than an approved route.
4. Approval of a road for use by oversize vehicle does **not** necessarily mean that unrestricted access to any adjacent site is permitted. The Road Transport Authority can provide advice on site access but it remains the responsibility of the operator and the driver to ensure that the site is accessible without a breach of these conditions or any other applicable law before attempting to do so.
5. This notice **only** permits operation on approved routes in the ACT. It does **not** authorise operation across the NSW border. Operators wishing to do so must comply with the NSW requirements.

## Part 6 – Note Related to Road Trains in the ACT

Under no circumstances must road trains operate on roads within the ACT. Refer to the *Road Transport (Dimensions and Mass) Act 1990* – Section 37 (2).

'Road train' means a combination, except a B-Double, consisting of a motor vehicle towing at least 2 trailers (counting a converter dolly supporting a semitrailer as a single trailer).

## Part 7 - Definitions

**“Approval Plate”** for a Front Under-run Protection (FUP) vehicle or FUP device means a decal, label or plate issued by a Competent Entity that is made of a material and fixed in such a way that they cannot be removed without being damaged or destroyed and that contains the following information.

- Trade name or mark of the FUP vehicle or FUP device;
- Manufacturer of the FUP vehicle or FUP device;
- Make or makes of vehicle that the component or device has been designed and certified to fit;
- Model or models of vehicle that the component or device has been designed and certified to fit;
- Competent Entity unique identification number;
- Date of Approval or issue of the plate;
- Approval Number issued by the Competent Entity; and
- Purposes of the approval i.e. approval for a FUP device, and/or for a FUP vehicle (UN ECE 93), and/or for Cab Strength (UN ECE 29).

**“Competent Entity”** means a person or organisation appointed by an Australian Road Authority, and issued with a unique identification number, with the power to certify that the UN ECE requirements for FUP and Cab Strength have been met, and continue to be met, and who may authorise the fixing of appropriate Approval Plates to the FUP device or a FUP vehicle.

A Compliance Plate Approval (CPA) holding heavy vehicle manufacturer is deemed to be a Competent Entity.

Most jurisdictions have indicated that Competent Entities are only approved to inspect and certify those vehicles that are registered in the same jurisdiction as the Competent Entity’s place of business. Despite those limitations on approval, the ACT will accept inspection and certification from a Competent Entity appointed by the Australian jurisdiction.

**“Converter Dolly”** means a trailer with one axle group or single axle, and a fifth wheel coupling, designed to convert a semitrailer into a dog trailer.

**“Extreme Axle”** means the axles, being a single axle or an axle in an axle group, being farthest a part from each other in a vehicle or combination.

**“Front Under-run Protection Device”** means a device fitted to a prime mover:

- That complies with UN ECE Regulation No. 93 and meets all of the requirements set out in Section 6 “Requirement for FUPDs” of Part I and Section 8 “Requirements for Installation of an Approved FUPD” of Part II of those regulations;
- Where compliance with the performance requirements of UN ECE Regulation No. 93 was established by laboratory testing carried out in accordance with the procedures set out in Annex 5 of UN ECE Regulation No. 93; and
- That was tested using the Test Conditions set out in Section 1 and the Test Procedure set out in Section 3 of the Annex 5 of the Guidelines for Implementing FUP and Cab

Strength Requirements published by the National Transport Commission (NTC).  
(Simulation of the test procedure by calculation or other such method as provided for in Section 1.3 of Annex 5 is not available under the NTC Guideline, except with the specific approval of the Authority or when approval has been granted using an “E-mark” issued pursuant to Annex 4 of UN ECE Regulation No. 93).

**“Front Under-run Protection Vehicle”** means a vehicle that complies with UN ECE Regulation No. 93 because it is designed and constructed so that it meets all of the requirements of Section 10 “Requirements for a vehicle with FUP” of Part III of those regulations.

For the purpose of this instrument the **“load”** of a vehicle or combination, or in or on a vehicle or combination, means:

- a) All the goods, passengers and drivers in or on the vehicle or combination, and
- b) All fuel, water, lubricants and readily removable equipment carried in or on the vehicle or combination and required for its normal operation; and
- c) Personal items used by a driver of the vehicle or combination; and
- d) Anything that is normally removed from the vehicle or combination when not in use, and includes a part of a load as so defined.

**“Manufacturer’s Axle Group Load Rating”** is the maximum load that the manufacturer specifies for an axle group.

**“Pig Trailer”** is a trailer with one axle group near the middle of the length of the goods carrying surface.

**“Road Train”** means a combination, except a B-Double, consisting of a motor vehicle towing at least 2 trailers (counting a converter dolly supporting a semitrailer as a single trailer).

ACT Emergency and other contact telephone numbers:

**Australian Federal Police:**

000 – Life Threatening Emergency  
11444 – Police Attendance  
(02) 6256 7777 – General Enquiries

**ACT Heavy Vehicle Permit Officer:**

(02) 6207 6565 (Business Hours)  
(02) 6207 6872 (Facsimile)

**ROUTES APPROVED FOR B-DOUBLES; VEHICLES UP TO 4.6 METRES HIGH AND 14.5 METRES LONG BUSES IN THE AUSTRALIAN CAPITAL TERRITORY**

**Unless otherwise indicated, all routes listed in this attachment are approved for use by:**

- a) B-Doubles with a gross mass limit not exceeding 62.5 tonnes gross combination mass with a maximum height of 4.6 metres, width of 2.5 metres and length of 25 metres or 26 metres with specific conditions complying with the Regulations made under the United Nations Economic Commission for Europe Agreement for a front under-run protection system (UN ECE R93) and for cabin strength (UN ECE R29), and where the distance between the centre line of the kingpin on the first trailer and the rear of the second trailer does not exceed 20.6 metres.
- b) All vehicles up to 4.6 metres in height, operating at normal mass and length limits to or under a relevant notice or permit.
- c) Buses with an overall length of greater than 12.5 metres but which are no longer than 14.5 metres.

<b>National Highways &amp; Main Roads into the ACT</b>	<b>From</b>	<b>To</b>	<b>Restrictions / Conditions (if applicable)</b>
Barton Highway (entire length)	ACT/NSW border	Northbourne Ave	
Canberra Avenue	ACT/NSW border	Hume Place	
Federal Highway (entire length)	ACT/NSW border	Norhtbourne Ave	
Kings Highway (entire length)	ACT/NSW border	ACT/NSW border	
Monaro Highway (entire length)	ACT/NSW border	Dairy Rd	

**ROUTES APPROVED FOR B-DOUBLES; VEHICLES UP TO 4.6 METRES HIGH AND 14.5 METRES LONG BUSES IN THE AUSTRALIAN CAPITAL TERRITORY**

<b>National Highways &amp; Main Roads into the ACT</b>	<b>From</b>	<b>To</b>	<b>Restrictions / Conditions (if applicable)</b>
Sutton Road (entire length)	ACT/NSW border	Yass Rd	
Yass Road (entire length)	ACT/NSW border	Sutton Rd	
Albany Street (entire length)	Collie St	Gladstone St	
Anketell Street (entire length)	Athllon Dr	Athllon Dr	Operation not permitted from 7.00am to 9.30am and 4.30pm to 6.30pm on Monday to Thursday. Operation not permitted from 7.00am to 9.30am and from 4.30pm to 9.00pm on Friday. Operation not permitted from 9.00am to midday on Saturday. Refer to Restricted Access Route 10 for additional restrictions.
Anthony Rolf Street	Gundaroo Dr	Gozzard St	Operation not permitted from 7.00am to 9.30am and 4.30pm to 6.30pm on Monday to Thursday. Operation not permitted from 7.00am to 9.30am and 4.30pm to 9.00pm on Friday. Operation not permitted from 9.00am to midday on Saturday. Refer to Restricted Access Route 10 for additional restrictions.

**ROUTES APPROVED FOR B-DOUBLES; VEHICLES UP TO 4.6 METRES HIGH AND 14.5 METRES LONG BUSES IN THE AUSTRALIAN CAPITAL TERRITORY**

<b>National Highways &amp; Main Roads into the ACT</b>	<b>From</b>	<b>To</b>	<b>Restrictions / Conditions (if applicable)</b>
Antill Street	Northbourne Ave	Badham St	Westbound one-way traffic only between Badham St and Challis St. Refer to Restricted Access Route 2 for additional restrictions.
Arnott Place (entire length)	Sheppard St	End	
Arnott Street	Sheppard St	ACT/NSW Border	
Ashley Drive	Sternberg Cres	Isabella Dr	Operation not permitted between Erindale Dr and Sternberg Cres from 7.30am to 9.30am and 4.30pm to 7.00pm, Monday to Friday. Refer to Restricted Access Route 6 for additional restrictions.
Athllon Drive (entire length)	Hindmarsh Dr	Isabella Dr	
Badham Street	Cape St	Antill St	Refer to Restricted Access Route 2 for restrictions.
Bailieu Court (entire length)	Lysaght St	Lysaght St	
Balcombe Street (entire length)	Sidney Nolan St	End	
Barrier Street (entire length)	Ipswich St	Newcastle St	No right turn into Ipswich St. Refer to Restricted Access Route 11 for additional details.

**ROUTES APPROVED FOR B-DOUBLES; VEHICLES UP TO 4.6 METRES HIGH AND 14.5 METRES LONG BUSES IN THE AUSTRALIAN CAPITAL TERRITORY**

<b>National Highways &amp; Main Roads into the ACT</b>	<b>From</b>	<b>To</b>	<b>Restrictions / Conditions (if applicable)</b>
Belconnen Way	Kingsford-Smith Dr	Haydon Dr	
Benjamin Way	Joynton Smith Dr	Belconnen Way	
Bindubi Street (entire length)	Belconnen Way	William Hovell Dr	
Box Hill Avenue	Balcombe Street	Tharwa Dr	
Brierly Street (entire length)	Hindmarsh Dr	Liardet St	
Brindabella Road	Cotter Rd	Mt Franklin Rd (Picadilly Circus)	Forestry and livestock traffic only. No loaded B-Doubles between Uriarra Road and Cotter Road except with permit.
Brookes Street (entire length)	Lysaght St	Sandford St	
Buckland Street (entire length)	Grimwade St	Brookes St	
Callan Street (entire length)	Vicars St	End	
Canberra Avenue	Hume Pl	State Circle	
Cape Street	Challis St	Badham St	Refer to Restricted Access Route 2 for restrictions.



**ROUTES APPROVED FOR B-DOUBLES; VEHICLES UP TO 4.6 METRES HIGH AND 14.5 METRES LONG BUSES IN THE AUSTRALIAN CAPITAL TERRITORY**

<b>National Highways &amp; Main Roads into the ACT</b>	<b>From</b>	<b>To</b>	<b>Restrictions / Conditions (if applicable)</b>
Captain Cook Crescent	Franklin St	Canberra Ave	Northbound one-way traffic only. Operation not permitted from 7.00am to 9.00am and 4.00pm to 6.30pm on Monday to Thursday. Operation not permitted from 7.00am to 9.00am and 4.00pm to 10.00pm on Friday. Refer to Restricted Access Route 1.
Challis Street	Antill St	Cape St	Refer to Restricted Access Route 2 for restrictions.
Chan Street (entire length)	Lathlain St	Benjamin Way	
Cheney Place (entire length)	Essington St	Crace Pl	
Cohen Street (entire length)	Lathlain St	Nettlefold St	Operation not permitted from 7.00am to 9.30am and 4.30pm to 6.30pm, Monday to Thursday. Operation not permitted from 7.00am to 9.30am and 4.30pm to 9.00pm on Friday. Operation not permitted from 9.00am to midday on Saturday. Refer to Restricted Access Route 4 for additional restrictions.
College Street	Lathlain St	Benjamin Way	

**ROUTES APPROVED FOR B-DOUBLES; VEHICLES UP TO 4.6 METRES HIGH AND 14.5 METRES LONG BUSES IN THE AUSTRALIAN CAPITAL TERRITORY**

<b>National Highways &amp; Main Roads into the ACT</b>	<b>From</b>	<b>To</b>	<b>Restrictions / Conditions (if applicable)</b>
Collie Street (entire length)	Newcastle St	Wollongong St	No right turn into Wollongong St.
Cooyong Street (1)	Northbourne Ave	Lonsdale St	
Cooyong Street (2)	Lonsdale St	Torrens St	Refer to Restricted Access Route 5 for additional restrictions.
Cooyong Street (3)	Torrens St	Coranderrk St	
Coppins Crossing Road, Belconnen (entire length)	William Hovell Dr	Uriarra Rd	Forestry and livestock traffic only.
Coranderrk Street	Cooyong St	Parkes Way	
Cotter Road	Streeton Dr	Brindabella Rd	Forestry and livestock traffic only. No loaded B-Doubles between Eucumbene Dr and Brindabella Rd except with permit.
Coulter Drive	Ginninderra Dr	Belconnen Way	
Cunningham Street	The Causeway	Wentworth Ave	
Dacre Street (entire length)	Hoskins St	End	
Dalby Street (entire length)	Mildura St	Canberra Ave	
Darling Street (entire length)	Lysaght St	Sandford St	

**ROUTES APPROVED FOR B-DOUBLES; VEHICLES UP TO 4.6 METRES HIGH AND 14.5 METRES LONG BUSES IN THE AUSTRALIAN CAPITAL TERRITORY**

<b>National Highways &amp; Main Roads into the ACT</b>	<b>From</b>	<b>To</b>	<b>Restrictions / Conditions (if applicable)</b>
Drake-Brockman Drive (entire length)	William Hovell Dr	Stockdill Dr	
Drakeford Drive (entire length)	Tuggeranong Pkway	Tharwa Dr	No turn into Johnson Dr.
Erindale Drive (entire length)	Yamba Dr	Soward Way	
Ernest Cavanagh Street	Gozzard St	Gungahlin PI	One way east-west movement only past entrance to Woolwoths loading bay. Operation not permitted from 7.00am to 9.30am and 4.30pm to 6.30pm, Monday to Thursday. Operation not permitted from 7.00am to 9.30am and 4.30pm to 9.00pm on Friday. Operation not permitted from 9.00am to midday on Saturday. Refer to Restricted Access Route 10 for additional restrictions.
Essington Street (entire length)	Vicars St	Lysaght St	
Eucumbene Drive (entire length)	Cotter Rd	Hindmarsh Dr	Forestry and livestock traffic only.
Fairbairn Avenue	Morshead Dr	Pialligo Ave	
Flemington Road	Lysaght St	Northbourne Ave	

**ROUTES APPROVED FOR B-DOUBLES; VEHICLES UP TO 4.6 METRES HIGH AND 14.5 METRES LONG BUSES IN THE AUSTRALIAN CAPITAL TERRITORY**

<b>National Highways &amp; Main Roads into the ACT</b>	<b>From</b>	<b>To</b>	<b>Restrictions / Conditions (if applicable)</b>
Flinders Way	Manuka Circle	Franklin St	Southbound one-way traffic only. Operation not permitted from 7.00am to 9.00am and 4.00pm to 6.30pm, Monday to Thursday. Operation not permitted from 7.00am to 9.00am and 4.00pm to 10.00pm on Friday. Refer to Restricted Access Route 1 for additional restrictions.
Franklin Street	Flinders Way	Captain Cook Cres	Eastbound one-way traffic only. Operation not permitted from 7.00am to 9.00am and 4.00pm to 6.30pm, Monday to Thursday. Operation not permitted from 7.00am to 9.00am and 4.00pm to 10.00pm on Friday. Refer to Restricted Access Route 1 for additional restrictions.
Geelong Street (entire length)	Canberra Ave	End	
Ginninderra Drive (1)	Haydon Dr	Mouat St	
Ginninderra Drive (2)	William Slim Dr	Coulter Dr	
Girrahween Street	Lonsdale St	Northbourne Ave	Operation not permitted from 8.00am to 9.30am and 4.00pm to 6.30pm, Monday to Friday. Operation not permitted from 9.00am to midday on Saturday.

**ROUTES APPROVED FOR B-DOUBLES; VEHICLES UP TO 4.6 METRES HIGH AND 14.5 METRES LONG BUSES IN THE AUSTRALIAN CAPITAL TERRITORY**

<b>National Highways &amp; Main Roads into the ACT</b>	<b>From</b>	<b>To</b>	<b>Restrictions / Conditions (if applicable)</b>
Gladstone Street (Fyshwick) (entire length)	Newcastle St	Tennant St	
Gladstone Street (Hall)	Wallaroo Road	Victoria St	Eastbound one-way traffic only. Refer to Restricted Access Route 9 for additional restrictions.
Gozzard Street	Ernest Cavanagh St	Hibbison St	One-way south to north movement only between Hibberson St and Ernest Cavanagh St. Operation not permitted from 7.00am to 9.30am and 4.30pm to 6.30pm, Monday to Thursday. Operation not permitted from 7.00am to 9.30am and 4.30pm to 9.00pm on Friday. Operation not permitted from 9.00am to midday on Saturday. Refer to Restricted Access Route 10 for additional restrictions.
Grimwade Street (entire length)	Lysaght St	Sandford St	
Gundaroo Drive	Barton Hwy	Anthony Rolfe St	
Gunghalin Drive	Gundaroo Dr	Barton Hwy	

**ROUTES APPROVED FOR B-DOUBLES; VEHICLES UP TO 4.6 METRES HIGH AND 14.5 METRES LONG BUSES IN THE AUSTRALIAN CAPITAL TERRITORY**

<b>National Highways &amp; Main Roads into the ACT</b>	<b>From</b>	<b>To</b>	<b>Restrictions / Conditions (if applicable)</b>
Gunghalin Place	Ernest Cavanagh St	Hibberson St	One-way north-south movement only. Operation permitted from 7.00am to 9.30am and 4.30pm to 6.30pm, Monday to Thursday. Operation not permitted from 7.00am to 9.30am and 4.30pm to 9.00pm on Friday. Operation not permitted from 9.00am to midday on Saturday. Refer to Restricted Access Route 10 for additional restrictions.
Haydon Drive (entire length)	Ginninderra Dr	Belconnen Way	
Heffernan Street (entire length)	Grimwade St	Darling St	
Hibberson Street	Gozzard St	Gungahlin Pl	One-way east to west movement only. Operation not permitted from 7.00am to 9.30am and 4.30pm to 6.30pm, Monday to Thursday. Operation not permitted from 7.00am to 9.30am and 4.30pm to 9.00pm on Friday. Operation not permitted from 9.00am to midday on Saturday. Refer to Restricted Access Route 10 for additional restrictions.

**ROUTES APPROVED FOR B-DOUBLES; VEHICLES UP TO 4.6 METRES HIGH AND 14.5 METRES LONG BUSES IN THE AUSTRALIAN CAPITAL TERRITORY**

<b>National Highways &amp; Main Roads into the ACT</b>	<b>From</b>	<b>To</b>	<b>Restrictions / Conditions (if applicable)</b>
Hindmarsh Drive (1)	Canberra Ave	Yamba Dr	
Hindmarsh Drive (2)	Streeton Dr	Eucumbene Dr	Forestry and livestock traffic only between Streeton Dr & Eucumbene Dr.
Hoskins Street	Wells Station Dr	Bellenden St	
Huddart Court (entire length)	Lysaght St	Lysaght St	
Hume Place (entire length)	Wentworth Ave	Wentworth Ave	
Ipswich Street	Canberra Ave	Newcastle St	
Isa Street (entire length)	Barrier St	Newcastle St	
Isabella Drive (entire length)	Monaro Hwy	Athllon Dr	
Jenke Circuit	Amopl service station	O'Halloran Circuit	Refer to Restricted Access Route 8 for additional restrictions.
Jim Pike Avenue	Point Hut Rd	Woodcock Dr	
Johns Place (entire length)	Sheppard St	End	
Johnson Drive	Were St	Drakeford Dr	Westbound one-way traffic only.
Josephson Street (entire length)	Luxton St	Nettlefold St	

**ROUTES APPROVED FOR B-DOUBLES; VEHICLES UP TO 4.6 METRES HIGH AND 14.5 METRES LONG BUSES IN THE AUSTRALIAN CAPITAL TERRITORY**

<b>National Highways &amp; Main Roads into the ACT</b>	<b>From</b>	<b>To</b>	<b>Restrictions / Conditions (if applicable)</b>
Joynton Smith Drive (entire length)	Coulter Dr	Benjamin Way	
Kembla Street (entire length)	Gladstone St	Wollongong St	
Kingsford-Smith Drive	Southern Cross Dr	William Hovell Dr	
Lanyon Drive (1)	Monaro Hwy	Sheppard St	
Lanyon Drive (2)	Monaro Hwy	ACT/NSW Border	
Lathlain Street	Luxton St	Nettlefold St	
Leeton Street (entire length)	Mildura St	Canberra Ave	
Liardet Street	Macnally St	Brierly St (first intersection)	
Lithgow Street (entire length)	Canberra Ave	End	
Long Gully Road (entire Length)	Yamba Dr	Mugga Lane	
Lonsdale Street (entire length)	Cooyong St (semitrailer)	Girrahween St	Operation not permitted from 8.00am to 9.30am and 4.00pm to 6.30pm, Monday to Friday. Operation not permitted from 9.00am to midday on Saturday.
Luxton Street	Coulter Dr	Lathlain St	



**ROUTES APPROVED FOR B-DOUBLES; VEHICLES UP TO 4.6 METRES HIGH AND 14.5 METRES LONG BUSES IN THE AUSTRALIAN CAPITAL TERRITORY**

<b>National Highways &amp; Main Roads into the ACT</b>	<b>From</b>	<b>To</b>	<b>Restrictions / Conditions (if applicable)</b>
Lyell Street (entire length)	Barrier St	Newcastle St	
Lysaght Street (entire length)	Hoskins St	Flemington Rd	
McEacharn Place (entire length)	Essington St	End	
Macnally Street (entire length)	Namatjira Dr	Liardet St	
Macnaughton Street (entire length)	Drake-Brockman Drive	Starke St	
Majura Road (entire length)	Federal Hwy	Fairbairn Ave	
Manuka Circle	Canberra Ave	Canberra Ave	
Maryborough Street (entire length)	Gladestone St	Wollongong St	
Melrose Drive	Hindmarsh Dr	Athllon Dr	
Mildura Street (entire length)	Canberra Ave	Wentworth Ave	
Morshead Drive (entire length)	Kings Ave roundabout	Fairbairn Ave	
Mort Street (entire length)	Cooyong Street (semitrailer)	Girrahween St	Operation not permitted from 8.00am to 9.30am and 4.00pm to 6.30pm, Monday to Friday. Operation not permitted from 9.00am to midday on Saturday.

**ROUTES APPROVED FOR B-DOUBLES; VEHICLES UP TO 4.6 METRES HIGH AND 14.5 METRES LONG BUSES IN THE AUSTRALIAN CAPITAL TERRITORY**

<b>National Highways &amp; Main Roads into the ACT</b>	<b>From</b>	<b>To</b>	<b>Restrictions / Conditions (if applicable)</b>
Mouat Street (entire length)	Ginninderra Dr	Northbourne Ave	
Mountain Road	Railway St	Oakes Estate Saleyards	Operation by livestock traffic only. (Note that Mountain Rd cannot be accessed via Norse Rd due to a 20 tonne load limit on the railway bridge).
Mugga Lane (entire length)	Hindmarsh Dr	Monaro Hwy	
Mundaring Drive (entire length)	Wentworth Ave	The Causeway	
Namatjira Drive	Streeton Dr	Macnally St	
Nettlefold Street (entire length)	Coulter Dr	Lathlain St	
Newcastle Street	Monaro Hwy	Canberra Ave	
Norman Lindsay Street (entire length)	Tharwa Dr	Sidney Nolan St	
Norse Road	Canberra Ave	Entrance to Canberra Abattoir	
Northbourne Avenue (entire length)	Federal Hwy	Vernon Circle	
Nyrang Street	Canberra Ave	Mildura St	
Oaks Estate Road	Pialligo Ave	Railway St	

**ROUTES APPROVED FOR B-DOUBLES; VEHICLES UP TO 4.6 METRES HIGH AND 14.5 METRES LONG BUSES IN THE AUSTRALIAN CAPITAL TERRITORY**

<b>National Highways &amp; Main Roads into the ACT</b>	<b>From</b>	<b>To</b>	<b>Restrictions / Conditions (if applicable)</b>
O'Halloran Circuit	Drakeford Dr	Jenke Circuit	Refer to Restricted Access Route 8 for additional restrictions.
Paddys River Road	Tidbinbilla Rd	Laurel Camp Rd	Forestry and livestock traffic only.
Parkes Way	Coranderrk Street roundabout	Kings Ave roundabout	
Pialligo Avenue	Fairbairn Ave	Yass Rd	
Pirie Street	Newcastle St	Barrier St	
Point Hut Road	Jim Pike Ave	Tidbinbilla Rd	Forestry and livestock traffic only.
Railway Street (1)	Mountain Road	Oaks Estate Rd	No access across railway bridge.
Railway Street (2)	Oaks Estate Rd	McEwan Ave	Local Access only – No access to NSW.
Randwick Road (entire length)	Northbourne Ave	Flemington Rd	
Raws Crescent (entire length)	Sheppard St	Sheppard St	
Sandford Street (entire length)	Gunghalin Dr	Flemington Rd	

**ROUTES APPROVED FOR B-DOUBLES; VEHICLES UP TO 4.6 METRES HIGH AND 14.5 METRES LONG BUSES IN THE AUSTRALIAN CAPITAL TERRITORY**

<b>National Highways &amp; Main Roads into the ACT</b>	<b>From</b>	<b>To</b>	<b>Restrictions / Conditions (if applicable)</b>
Scollay Street (entire length)	Reed St (North)	Athllon Dr	No left turn into Athllon Dr. Operation not permitted from 7.00am to 9.30am and 4.30pm to 6.30pm, Monday to Thursday. Operation not permitted from 7.00am to 9.30am and from 4.30pm to 9.00pm on Friday. Operation not permitted 9.00am to midday on Saturday. Refer to Restricted Access Route 3 for additional restrictions.
Sheppard Street (entire length)	Monaro Hwy	Lanyon Dr	
Sidney Nolan Street	Norman Lindsay St	Balcombe St	
Sleigh Place (entire length)	Sheppard St	End	
Southern Cross Drive	Coulter Dr	Kingsford Smith Dr	
Soward Way (entire length)	Erindale Dr	Athllon Dr	Operation not permitted from 7.00am to 9.30am and 4.30pm to 6.30pm, Monday to Thursday. Operation not permitted from 7.00am to 9.30am and from 4.30pm to 9.00pm on Friday. Operation not permitted from 9.00am to midday on Saturday. Refer to Restricted Access Route 3 for additional restrictions.

**ROUTES APPROVED FOR B-DOUBLES; VEHICLES UP TO 4.6 METRES HIGH AND 14.5 METRES LONG BUSES IN THE AUSTRALIAN CAPITAL TERRITORY**

<b>National Highways &amp; Main Roads into the ACT</b>	<b>From</b>	<b>To</b>	<b>Restrictions / Conditions (if applicable)</b>
Starke Street	Macnaughton St	Unnamed St (connecting Stake St and Hardwick Cres)	
State Circle (entire length)	Canberra Ave	Canberra Ave	
Sternberg Crescent	Ashley Dr	Erindale Dr	Operation not permitted between Erindale Dr and Sternberg Cr from 7.30am to 9.30am and 4.30pm to 7.00pm, Monday to Friday.
Stockdill Drive (entire length)	Drake-Brockman Dr	End	
Streeton Drive (1)	Hindmarsh Dr	Namatjira Dr	
Streeton Drive (2)	Namatjira Dr	Cotter Rd	Forestry and livestock traffic only.
Sulwood Drive	Kambah Pool Rd	Erindale Dr	
Tennant Street (entire length)	Gladstone St	Collie St	
Tharwa Drive	Monaro Hwy	Norman Lindsay St	
The Causeway (entire length)	Mundaring Dr	Cunningham St	
Tidbinbilla Road	Point Hut Rd	Paddys River Rd	Forestry and livestock traffic only.
Tooth Street (entire length)	Dacre St	Dacre St	

**ROUTES APPROVED FOR B-DOUBLES; VEHICLES UP TO 4.6 METRES HIGH AND 14.5 METRES LONG BUSES IN THE AUSTRALIAN CAPITAL TERRITORY**

<b>National Highways &amp; Main Roads into the ACT</b>	<b>From</b>	<b>To</b>	<b>Restrictions / Conditions (if applicable)</b>
Townsville Street (entire length)	Albany St	Gladstone St	
Tralee Street (entire length)	Monaro Hwy	End	
Uriarra Road (entire length)	Cotter Rd	Brindabella Rd	Forestry and livestock traffic only.
Vernon Circle (entire length)	Northbourne Ave	Northbourne Ave	
Vicars Street (entire length)	Hoskins St	Lysaght St	
Victoria Street	Gladstone Street (Hall)	Barton Hwy	Southbound one-way traffic only. Refer to Restricted Access Route 9 for additional restrictions.
Wells Station Road (entire length)	Gunghalin Dr	Hoskins St	
Wentworth Avenue (entire length)	Hume PI	Telopea Park	

**ROUTES APPROVED FOR B-DOUBLES; VEHICLES UP TO 4.6 METRES HIGH AND 14.5 METRES LONG BUSES IN THE AUSTRALIAN CAPITAL TERRITORY**

<b>National Highways &amp; Main Roads into the ACT</b>	<b>From</b>	<b>To</b>	<b>Restrictions / Conditions (if applicable)</b>
Webber Cres (entire length)	Were St	Were St	Refer to Restricted Access Route 7 for additional restrictions.
Were Street (entire length)	Tharwa Dr	Johnson Dr	No right turn into Johnson Dr. Operation of B-Doubles carrying dangerous goods not permitted from 8.00am to 4.00pm, Monday to Friday during school terms. Operation of B-Doubles not permitted from 8.00am to 9.00am and 2.45pm to 4.00pm, Monday to Friday during school terms. Refer to Restricted Access Route 7 for additional restrictions.
Whyalla Street (entire length)	Canberra Ave	Newcastle St	
William Hovell Dr	Kingsford Smith Dr	Bindibi S	
William Slim Drive (entire length)	Barton Hwy	Ginninderra Dr	
Wiluna Street (entire length)	Ipswich St	Lithgow St	
Winchcombe Court (entire length)	Sandford St	Winchcombe Lane	
Winchcombe Lane (entire length)	Winchcombe Court	Heffernan St (semitrailer)	

**ROUTES APPROVED FOR B-DOUBLES; VEHICLES UP TO 4.6 METRES HIGH AND 14.5 METRES LONG BUSES IN THE AUSTRALIAN CAPITAL TERRITORY**

<b>National Highways &amp; Main Roads into the ACT</b>	<b>From</b>	<b>To</b>	<b>Restrictions / Conditions (if applicable)</b>
Wollongong Street (entire length)	Gladstone St	Newcastle St	No right turn into Collie St.
Woodcock Drive	Jim Pike Ave	Drakeford Dr	
Yallourn Street (entire length)	Canberra Ave	End	
Yamba Drive	Hindmarsh Dr	Erindale Dr	



**ROUTES APPROVED FOR B-DOUBLES; VEHICLES UP TO 4.6 METRES HIGH AND 14.5 METRE LONG BUSES IN THE AUSTRALIAN CAPITAL TERRITORY**

**Additional Restricted Access Routes – Access to Specific Sites**

**1. For access to Shell Service Station, Manuka (Franklin Street):**

Left turn from **Canberra Avenue** into **Flinders Way**, left turn into **Franklin Street**, left turn into **Shell Service Station**, left turn into **Canberra Avenue**, left turn into **Flinders Way**, left turn into **Franklin Street**, left turn into **Captain Cook Crescent**, right turn into **Canberra Avenue**.

Operation on this route is **not** permitted at the following times:

Monday to Thursday: 7.00am to 9.00am and 4.00pm to 6.30pm;

Friday: 7.00am to 9.00am and 4.00pm to 10.00pm

**2. Challis Street, Badham Street, Cape Street, Antill Street (between Northbourne Avenue and Badham Street), Dickson:**

Vehicles to which this notice applies may only use these streets when accessing ACT Road User Services – ACT Motor Vehicle Registry, Challis Street and Service Stations in this locality.

Vehicles to which this notice applies must conduct a route assessment to determine the most suitable route to access the ACT Motor Registry and the listed services stations.

Operation on these routes is **not** permitted at the following times:

Monday to Thursday: 7.00am to 9.00am and 4.00pm to 6.30pm;

Friday: 7.00am to 9.00am and 4.00pm to 10.00pm; and

Saturday: 9.00am to midday.

Route assessments must be approved by the Road Transport Authority.

**ROUTES APPROVED FOR B-DOUBLES; VEHICLES UP TO 4.6 METRES HIGH AND 14.5 METRE LONG BUSES IN THE AUSTRALIAN CAPITAL TERRITORY**

**Additional Restricted Access Routes – Access to Specific Sites**

**3. For access to Shell Service Station, Tuggeranong Town Centre (Anketell Street):**

Left turn from **Anketell Street** into **Shell Service Station**, left turn into **Soward Way**. Vehicles to which this notice applies must conduct a route assessment to determine most suitable route to this location.

Operation on this route is **not** permitted at the following times:

Monday to Thursday: 7.00am to 9.30am and 4.30pm to 6.30pm;

Friday: 7.00am to 9.30am and 4.30pm to 9.00pm; and

Saturday: 9.00am to midday.

**4. For access to Shell Service Station, Belconnen (Cohen Street):**

Left or right turn from **Lathlain Street** into **Cohen Street**, right turn into **Shell Service Station**, right turn into **Cohen Street**, left or right turn into **Nettlefold Street**.

Operation on this route is **not** permitted at the following times:

Monday to Thursday: 7.00am to 9.30am and 4.30pm to 6.30pm;

Friday: 7.00am to 9.30am and 4.30pm to 9.00pm; and

Saturday: 9.00am to midday.

**5. For access to Mobil Service Station, Braddon (Cooyong Street):**

Left turn from **Cooyong Street** into **Mobil Service Station**, left turn into **Lonsdale Street**, left turn into **Girrahween Street**, left or right turn into **Northbourne Avenue**.

**ROUTES APPROVED FOR B-DOUBLES; VEHICLES UP TO 4.6 METRES HIGH AND 14.5 METRE LONG BUSES IN THE AUSTRALIAN CAPITAL TERRITORY**

**Additional Restricted Access Routes – Access to Specific Sites**

**6. For access to Mobil Service Station, Wanniasa (Ashley Drive):**

Left turn from **Ashley Drive** into **Mobil Service Station**, left turn into **Ashley Drive**.

Operation on this route is **not** permitted at the following times:

Monday to Friday: 7.30am to 9.30am and 4.30pm to 7.00pm.

**7. For access to Ampol Service Station, Calwell (Were Street):**

Right turn from **Were Street** into **Webber Crescent**, (either intersection), left or right turn into **carpark**, left turn into **Ampol Service Station**, left turn into **Were Street**.

Operation on this route is **not** permitted at the following times:

Monday to Friday (during school terms): 8.00am to 4.00pm.

**8. For access to Ampol Service Station, Kambah (O'Halloran Circuit):**

Left or right turn from **Drakeford Drive** into **O'Halloran Circuit**, left turn into **Ampol Service Station**, right turn into **Jenke Circuit**, right turn into **O'Halloran Circuit**, left or right turn into **Drakeford Drive**.

Operation on this route is **not** permitted at the following times:

Monday to Friday (during school terms): 8.00am to 4.00pm.

## **ROUTES APPROVED FOR B-DOUBLES; VEHICLES UP TO 4.6 METRES HIGH AND 14.5 METRE LONG BUSES IN THE AUSTRALIAN CAPITAL TERRITORY**

### **Additional Restricted Access Routes – Access to Specific Sites**

#### **9. For access to Canberra Carways Pty Ltd depot, Hall (Gladstone Street):**

Left or right turn from **Barton Highway** into **Wallaroo Road**, straight ahead into **Gladstone Street**, left turn into **Canberra Carways Pty Ltd depot**, left turn into **Gladstone Street**, right turn into **Victoria Street**, left or right turn into **Barton Highway**.

#### **10. For movement in Gungahlin Market Place:**

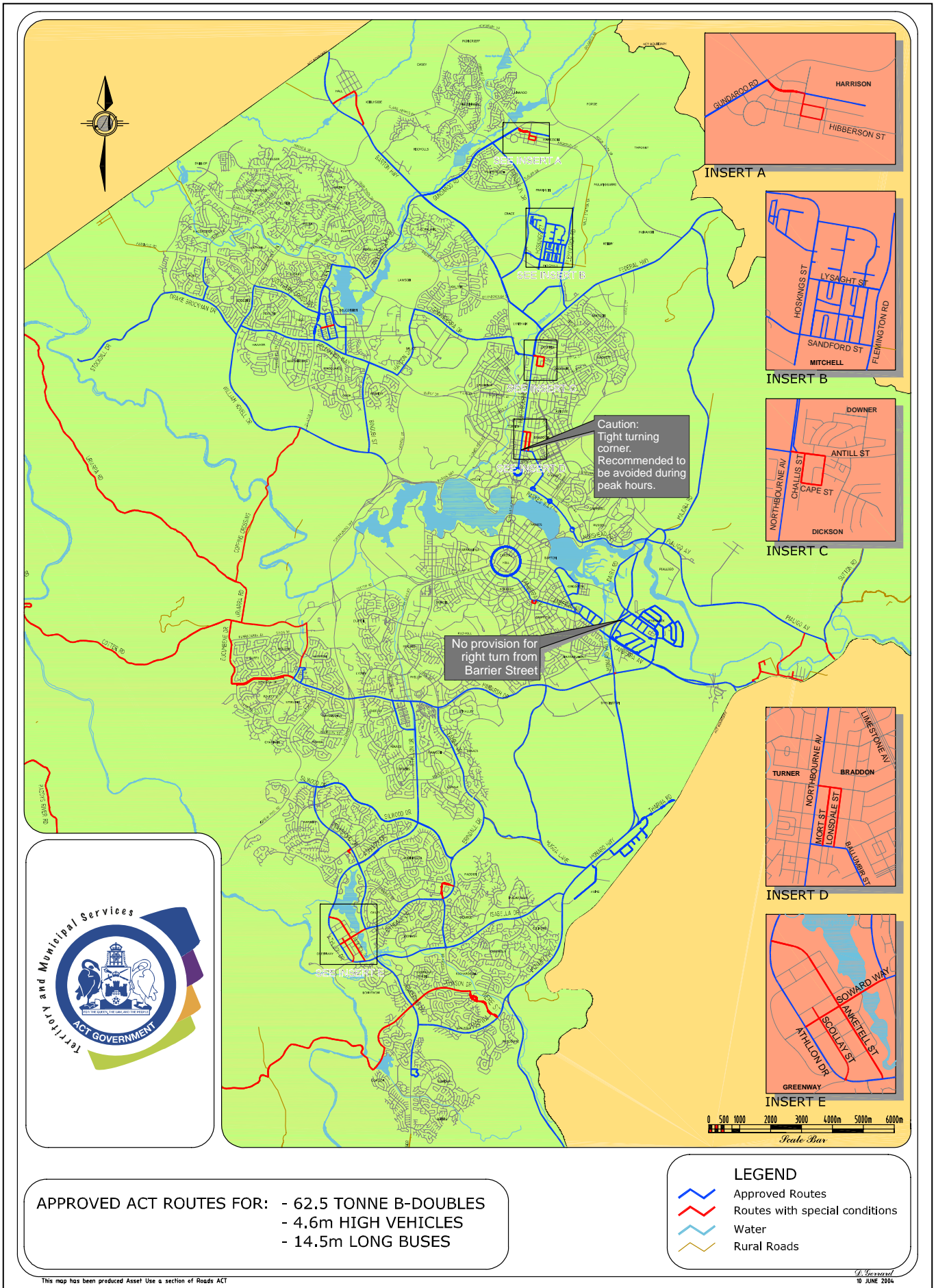
One way west to east movement only on **Ernest Cavanagh Street** at any point past the **Woolworhts loading bay**; one way north to south movement only on **Gungahlin Place**.

#### **11. For movement in Fyshwick Industrial area:**

The following restrictions apply in this area:

Barrier Street – no right turn onto Ipswich Street.

Wollongong Street – no right turn into Collie Street.



Map 1 of the Attachment to the Schedule of the Exemption Notice made under the *Road Transport (Dimensions and Mass) Act 1990*  
 Authorised by the ACT Parliamentary Counsel—also accessible at [www.legislation.act.gov.au](http://www.legislation.act.gov.au)