

# Road Transport (General) Application of Road Transport Legislation Declaration 2010 (No 6)

Disallowable instrument DI2010—158

made under the

**Road Transport (General) Act 1999, section 12 (Power to include or exclude areas in road transport legislation)**

---

## 1 Name of instrument

This instrument is the *Road Transport (General) Application of Road Transport Legislation Declaration 2010 (No 6)*.

## 2 Commencement

This instrument commences on 10 July 2010.

## 3 Declaration

I declare that the road transport legislation does not apply to a road or road related area that is a special stage of the 2010 PCD Engineering Mini Corsa Rally.

## 4 Period of effect of declaration

The declaration has effect on 10 July 2010 in relation to a special stage for the event for any period beginning when an event official declares (however described) the stage active for a testing session, media event or rally competition and ending when an event official declares (however described) the stage inactive.

## 5 Definitions

In this instrument:

*event* means the 2010 PCD Engineering Mini Corsa Rally.

*special stage*, for the event, means a road or road related area identified for the event on the attached maps:

- Special Stage 1 – Zoo Pipeline I;
- Special Stage 2 – Bluetts I;
- Special Stage 3 – Sherwood I;

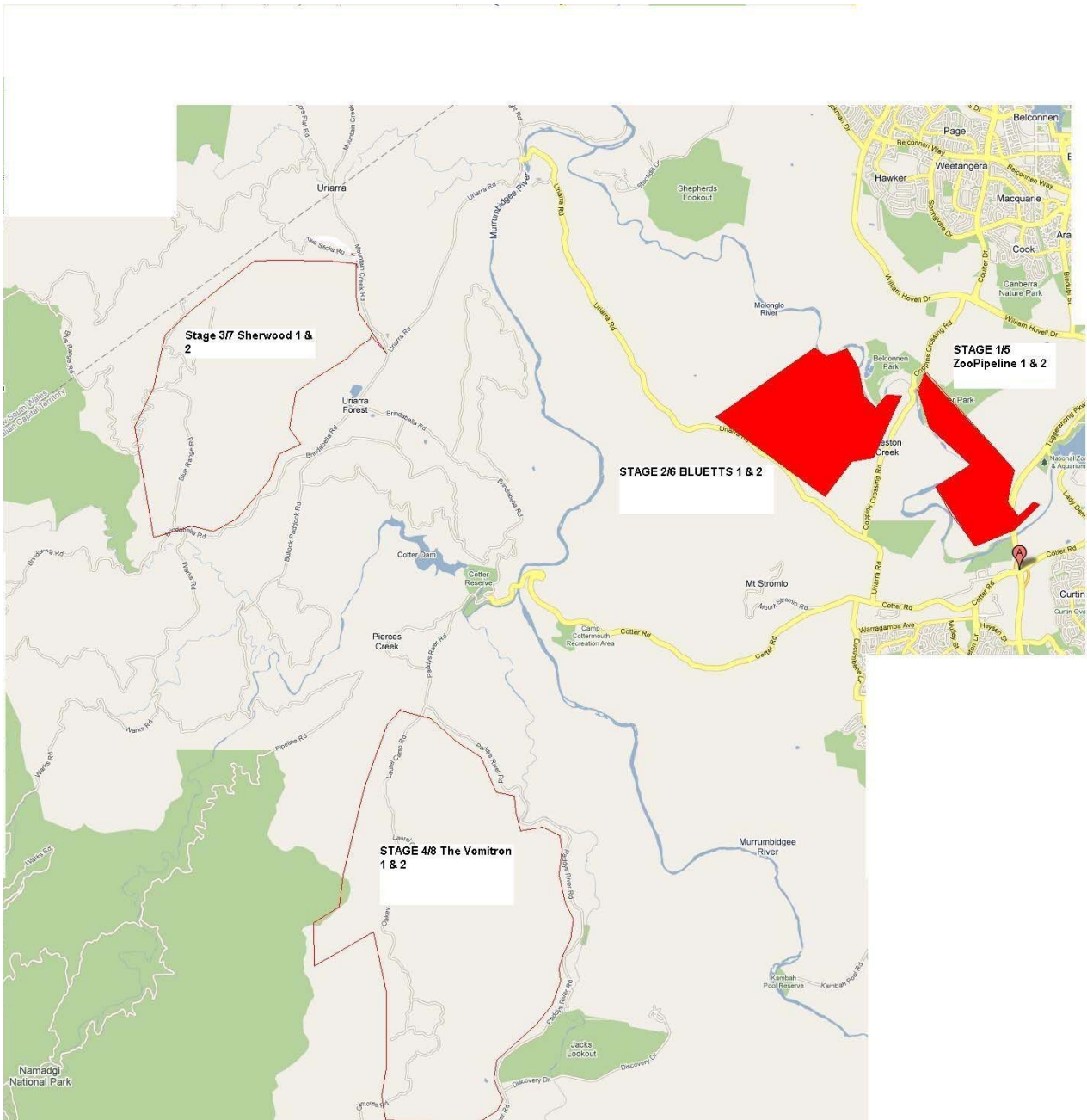
- Special Stage 4 – The Vomitron I;
- Special Stage 5 – Zoo Pipeline II;
- Special Stage 6 – Bluetts II;
- Special Stage 7 – Sherwood II; and
- Special Stage 8 – The Vomitron II;

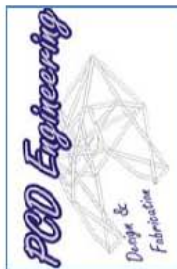
## **6 Expiry**

This instrument expires on 11 July 2010.

Jon Stanhope  
Minister for Transport  
30 June 2010

# Overview Map





## 2010 PCD Engineering Mini Corsa Rally - Event Itinerary

TC	Stage Number & Name	Competitive Distance (km)	Liaison Distance (km)	Total Distance (km)	Service Time (h:min)	Time Allowed incl. Service (h:min)	000	00	0	Car 1	Car 40	Control Closes	Average Speed (kph)
<b>Section 1</b>													
	1.1 Liaison - Start		12.42	12.42	0:00	0:16	9:00	9:30	9:45	10:00	11:08	11:38	46.58
	1.2 SS1 Zoo Pipeline	8.16	4.13	12.29	0:00	0:16	9:34	9:49	10:04	10:19	11:27	11:57	46.09
	1.3 SS2 Bluetts 1	10.12	20.63	30.75	0:00	0:34	9:53	10:08	10:23	10:38	11:46	12:16	54.26
	1.4 SS3 Sherwood 1	15.47	26.63	42.10	0:15	1:03	10:30	10:45	11:00	11:15	12:23	12:53	52.63
	1.5 SS4 The Vomitron 1	33.10	15.50	48.60	0:20	1:09	11:36	11:51	12:06	12:21	13:29	13:59	59.51
	1.6 Regroup In	0.00	0.00	0.00	0:00	0:15	12:48	13:03	13:18	13:33	14:41	15:11	0.00
<b>Section 2</b>													
	2.1 Regroup Out	0.00	31.42	31.42	0:00	0:35	13:03	13:18	13:33	13:48	14:56	15:26	53.86
	2.2 SS5 Zoo Pipeline 2	8.16	4.13	12.29	0:00	0:16	13:41	13:56	14:11	14:26	15:34	16:04	46.09
	2.3 SS6 Bluetts 2	10.12	20.63	30.75	0:00	0:34	14:00	14:15	14:30	14:45	15:53	16:23	54.26
	2.4 SS7 Sherwood 2	15.47	26.63	42.10	0:15	1:03	14:37	14:52	15:07	15:22	16:30	17:00	52.63
	2.5 SS8 The Vomitron 2	33.10	28.60	61.70	0:00	1:05	15:43	15:58	16:13	16:28	17:36	18:06	56.95
	2.6 Finish						16:51	17:06	17:21	17:36	18:44	19:14	0.00
	<b>TOTAL</b>	133.70	190.72	324.42	0:50	7:06							

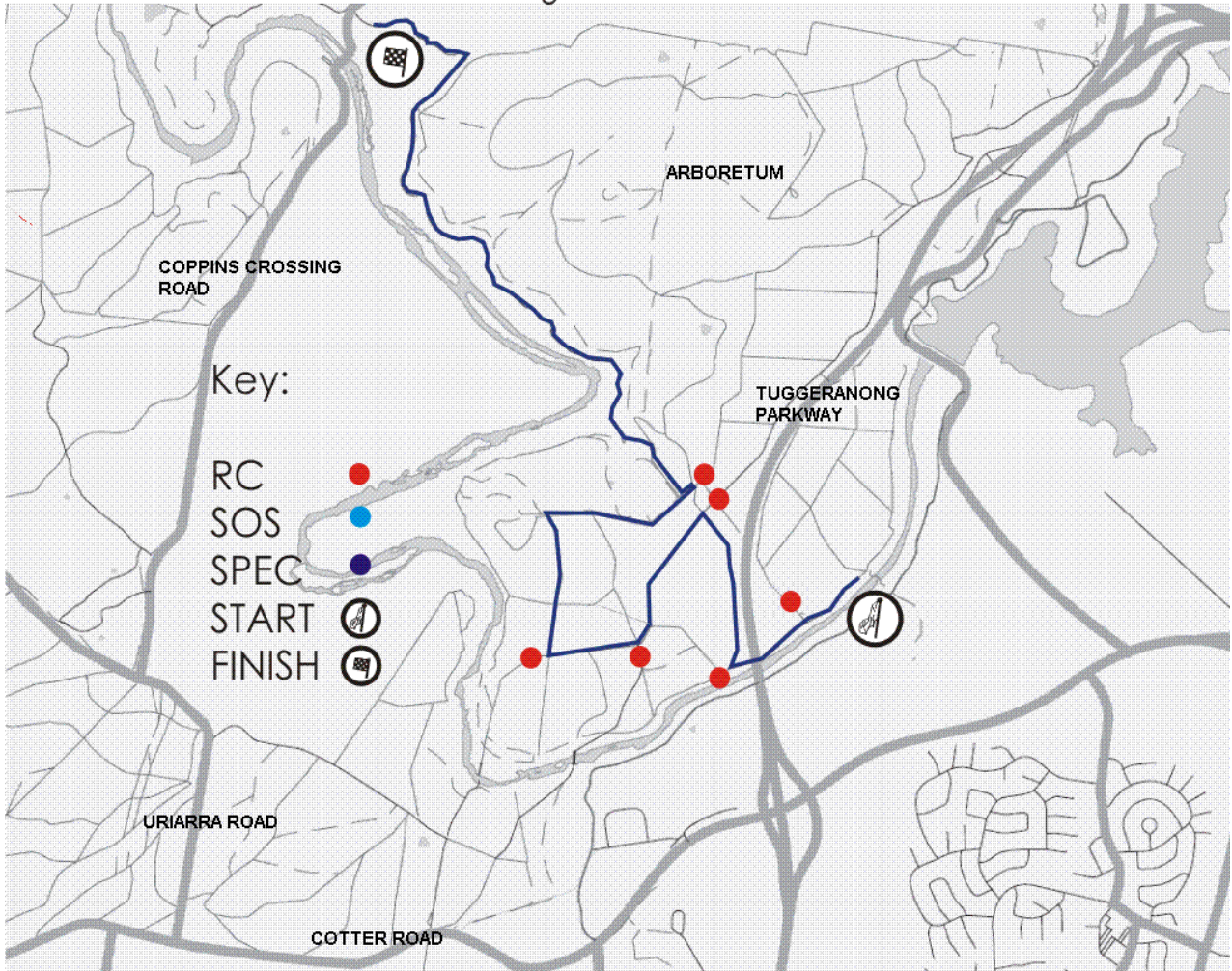
2 minute gaps for the entire event

Remote Refuels at Mtn Creek Road before SS3 and SS7

# Zoo Pipeline Stage

SPONSORED BY

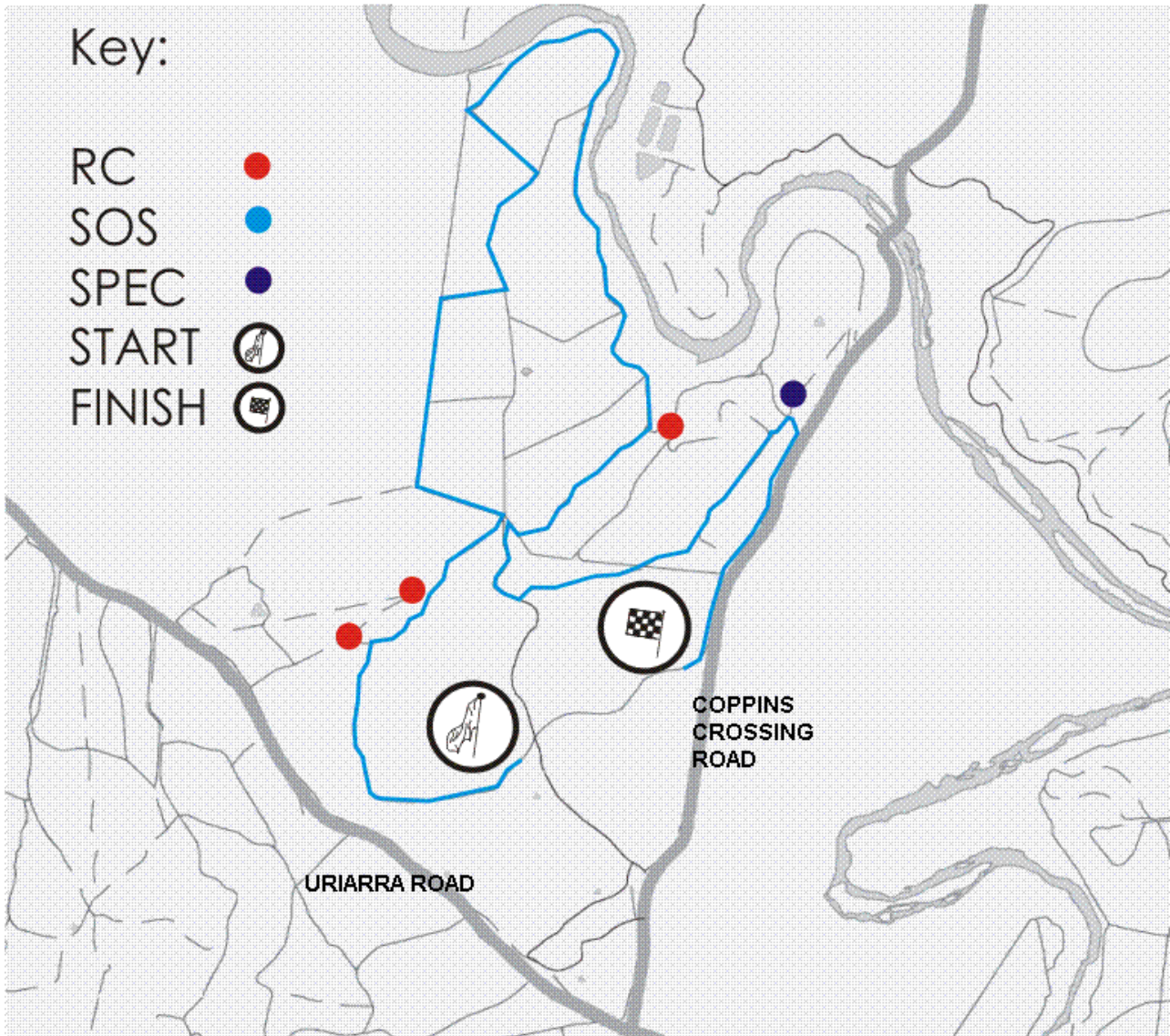
Stage 1 & 5



# Bluetts Stage

SPONSORED BY

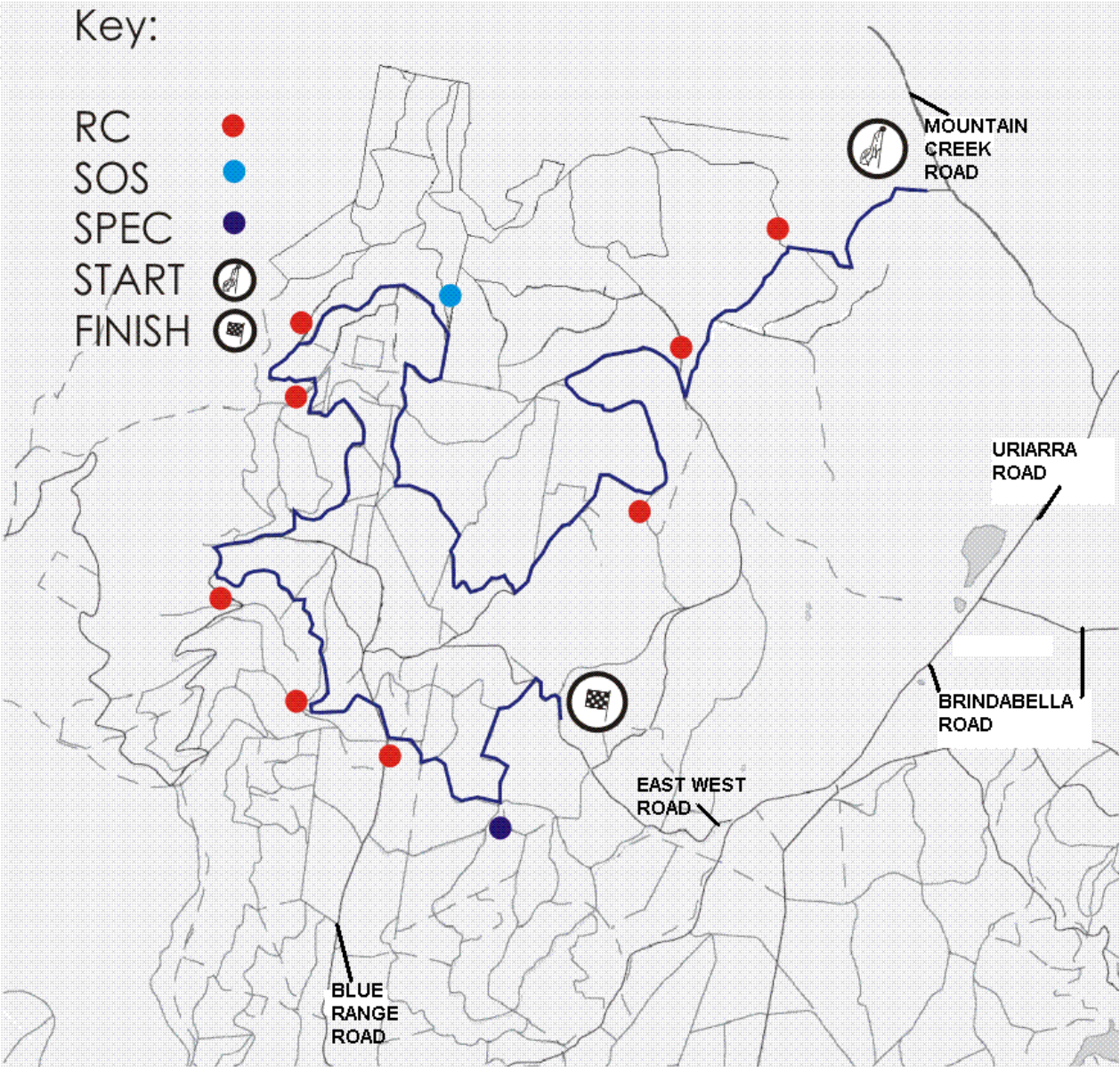
## Stage 2 & 6



# Sherwood

SPONSORED BY

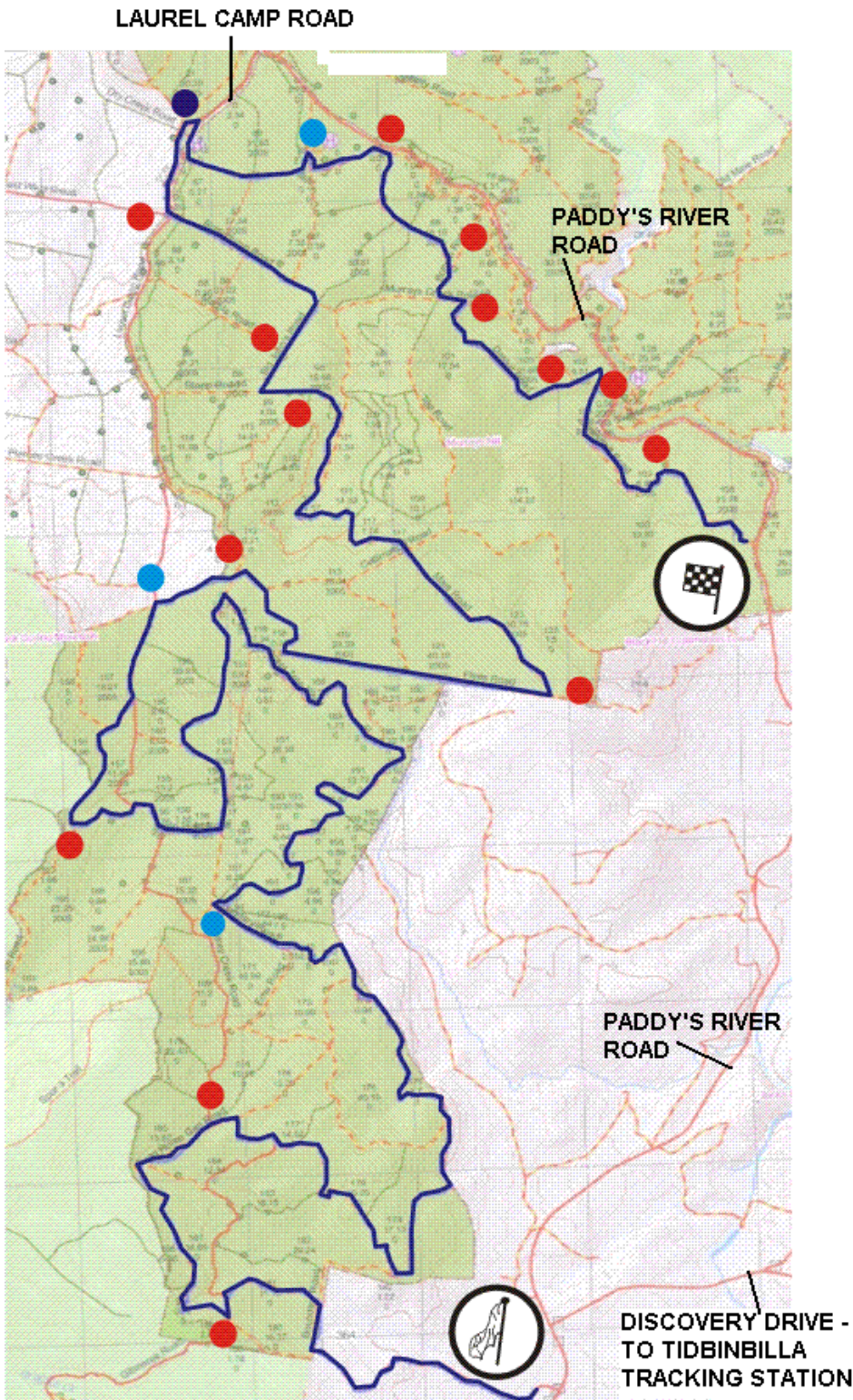
## Stage 3 & 7



# The Vomitron Stage

SPONSORED BY

Stage 4 & 8



Key:

- RC 
- SOS 
- SPEC 
- START 
- FINISH 