

Road Transport (General) Application of Road Transport Legislation Declaration 2013 (No 3)

Disallowable instrument DI2013—12

made under the

Road Transport (General) Act 1999, section 12 (Power to include or exclude areas in road transport legislation)

1 Name of instrument

This instrument is the *Road Transport (General) Application of Road Transport Legislation Declaration 2013 (No 3)*.

2 Commencement

This instrument commences on 25 February 2013.

3 Declaration

I declare that the road transport legislation does not apply to a road or road related area that is a special stage of the National Capital Rally, Test Events, Corporate Events and Media Events.

4 Period of effect of declaration

The declaration has effect on 25 February 2013 to 3 March 2013 in relation to a special stage for the event for any period beginning when an event official declares (in whatever manner the event official describes) the stage active for a testing session, media event, corporate event day or rally competition and ending when an event official declares the stage inactive.

5 Definitions

In this instrument:

event means the National Capital Rally, Test Events, Corporate Events and Media Events.

event official means an official for the event who holds an official's licence from the Confederation of Australian Motor Sport Ltd that authorises the official to declare event stages active or inactive.

special stage, for the event, means a road or road related area identified for the event on the attached map:

- Corporate Day;
- Testing and Training Stages;
- Ceremonial Start;

- Power Stage;
- Special Stage 1 — Oakey 1;
- Special Stage 2 — Southern Automotive Services 1;
- Special Stage 3 — East West 1;
- Special Stage 4 — Oakey 2;
- Special Stage 5 — Southern Automotive Services 2;
- Special Stage 6 — East West 2;
- Special Stage 7 — Wamboin 1;
- Special Stage 8 — River Road 1;
- Special Stage 9 — Millpost Lane 1;
- Special Stage 10 — Bluetts;
- Special Stage 11 — Wamboin 2;
- Special Stage 12 — River Road 2;
- Special Stage 13 — Millpost Lane 2.

6 Expiry

This instrument expires on 4 March 2013.

Simon Corbell
Attorney-General

21 February 2013



HEAT 1

TC	Stage Name	SS Dist	Liaison Dist	Total Dist	Time Allowed	Car 1	
----	------------	---------	--------------	------------	--------------	-------	--

SECTION 1

TC 0	Bruce start					8:00	
RZ 1	Refuel (Service Park) <i>Distance to next refuel</i>		47.71	47.71			
RZ 2	Refuel (Tidbinbilla Lane) <i>Distance to next refuel</i>	48.03	70.26	118.29			
TC1	Tidbinbilla Lane		47.71	47.71	1:00	9:00	
SS1	Oakey I	16.38				9:03	
TC2	Oakey Creek Rd		7.39	23.77	0:30	9:33	
SS2	Southern Automotive Services I	16.03				9:36	
TC3	East West Rd		18.89	34.92	0:40	10:16	
SS3	East West I	15.62				10:19	
TC3A	Regroup A In		43.98	59.60	1:10	11:29	
	Regroup A				0:20		

SECTION 2

TC3B	Regroup A Out/Service A In					11:49	
	Service A	48.03	117.97	166.00	0:30		
TC3C	Service A Out					12:19	
RZ 3	Refuel (Service Park) <i>Distance to next refuel</i>		47.61	47.61			
TC3D	Service B In		47.61	47.61	0:55	13:14	
	Remote Service B (Tidbinbilla Ln)		47.61	47.61	0:15		
TC3E	Service B Out					13:29	
RZ 4	Refuel (Tidbinbilla Lane) <i>Distance to next refuel</i>	48.03	70.36	118.39			
TC4	Tidbinbilla Lane		0.10	0.10	0:10	13:39	
SS4	Oakey II	16.38				13:42	
TC5	Oakey Creek Rd		7.39	23.77	0:30	14:12	
SS5	Southern Automotive Services II	16.03				14:15	
TC6	East West Rd		18.89	34.92	0:40	14:55	
SS6	East West II	15.62				14:58	
TC6A	Service C In		43.98	59.60	1:10	16:08	
	Service C In	48.03	70.36	118.39	2:00		
TC6B	Service C Out/ Parc Ferme In					18:08	E
	HEAT 1 TOTAL	96.06	235.94	332.00			



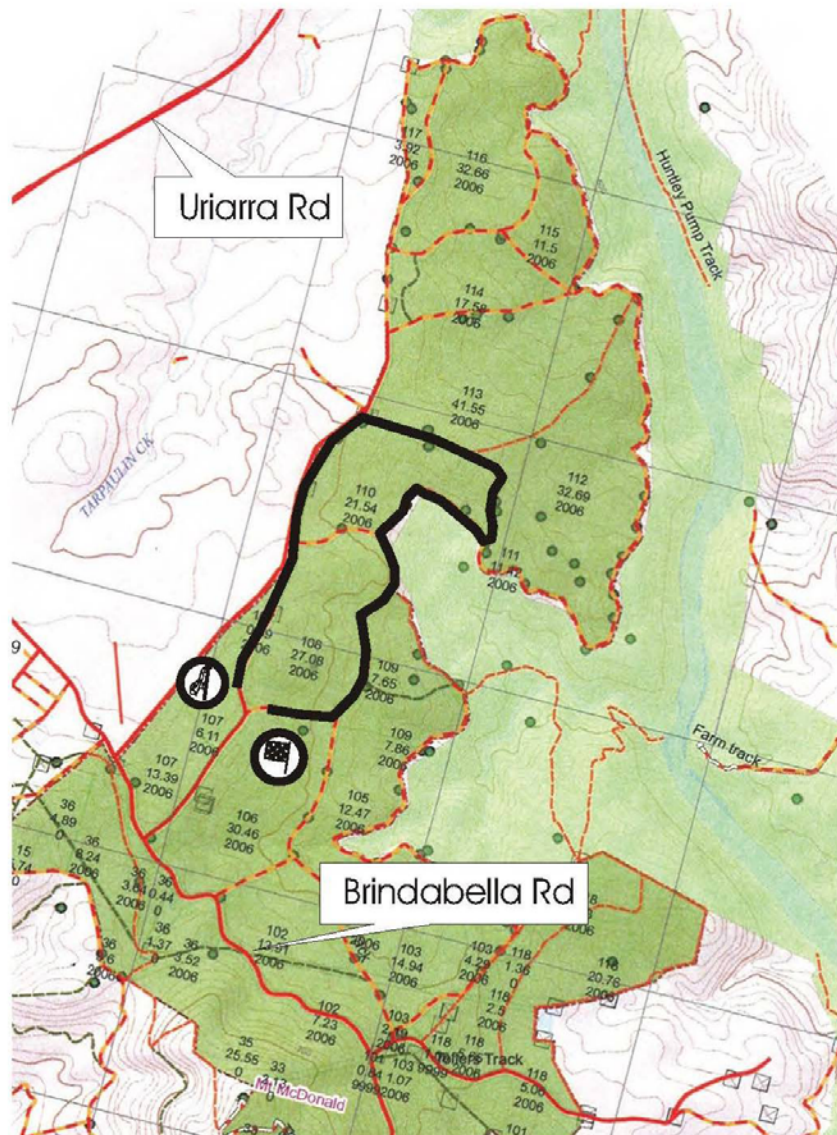
HEAT 2

TC	Stage Name	SS Dist	Liaison Dist	Total Dist	Time Allowed	Car 1	
SECTION 3							
TC6C	Parc Ferme Out/Service D In					7:30	
	Service D				0:20		
TC6D	Service D Out					7:50	
RZ 5	Refuel (Service Park) <i>Distance to next refuel</i>		25.39	25.39			
RZ 6	Refuel (Sutton Rd) <i>Distance to next refuel</i>	41.89	56.63	98.52			
TC7	7 Mile Hill Rd		36.69	36.69	0:45	8:35	
SS7	Wamboin I	16.50				8:38	
TC8	Old Kowen Rd		2.76	19.26	0:25	9:03	
SS8	River Rd I	10.77				9:06	
TC9	McInnes Rd		1.10	11.87	0:15	9:21	
SS9	Millpost Lane I	14.62				9:24	
TC9A	Regroup B In		41.47	56.09	1:05	10:29	
	Regroup B				0:20		
SECTION 4							
TC9B	Regroup B Out/Service E In					10:49	
	Service E	41.89	82.02	123.91	0:30		
TC9C	Service E Out					11:19	
RZ 7	Refuel (Service Park) <i>Distance to next refuel</i>	11.56	48.76	60.32			
TC10	Uriarra Rd		20.06	20.06	0:25	11:44	
SS10	Bluetts	11.56				11:47	
TC10A	Service F In		28.70	40.26	0:45	12:32	
	Remote Service F (Sutton Rd)	11.56	48.76	60.32	0:15		
TC10B	Service F Out					12:47	
RZ 8	Refuel (Sutton Rd) <i>Distance to next refuel</i>	41.89	56.69	98.58			
TC11	7 Mile Hill Rd		11.36	11.36	0:15	13:02	
SS11	Wamboin II	16.50				13:05	
TC12	Old Kowen Rd		2.76	19.26	0:25	13:30	
SS12	River Rd II	10.77				13:33	
TC13	McInnes Rd		1.10	11.87	0:15	13:48	
SS13	Millpost Lane II	14.62				13:51	
TC13A	Service G In		41.47	56.09	1:05	14:56	E
	Service G	41.89	56.69	98.58	0:05		
TC13B	Service G Out / Parc Ferme In					15:01	
	Podium					15:30	
	HEAT 2 TOTAL	95.34	187.47	282.81			
	EVENT TOTAL	191.40	423.41	614.81			

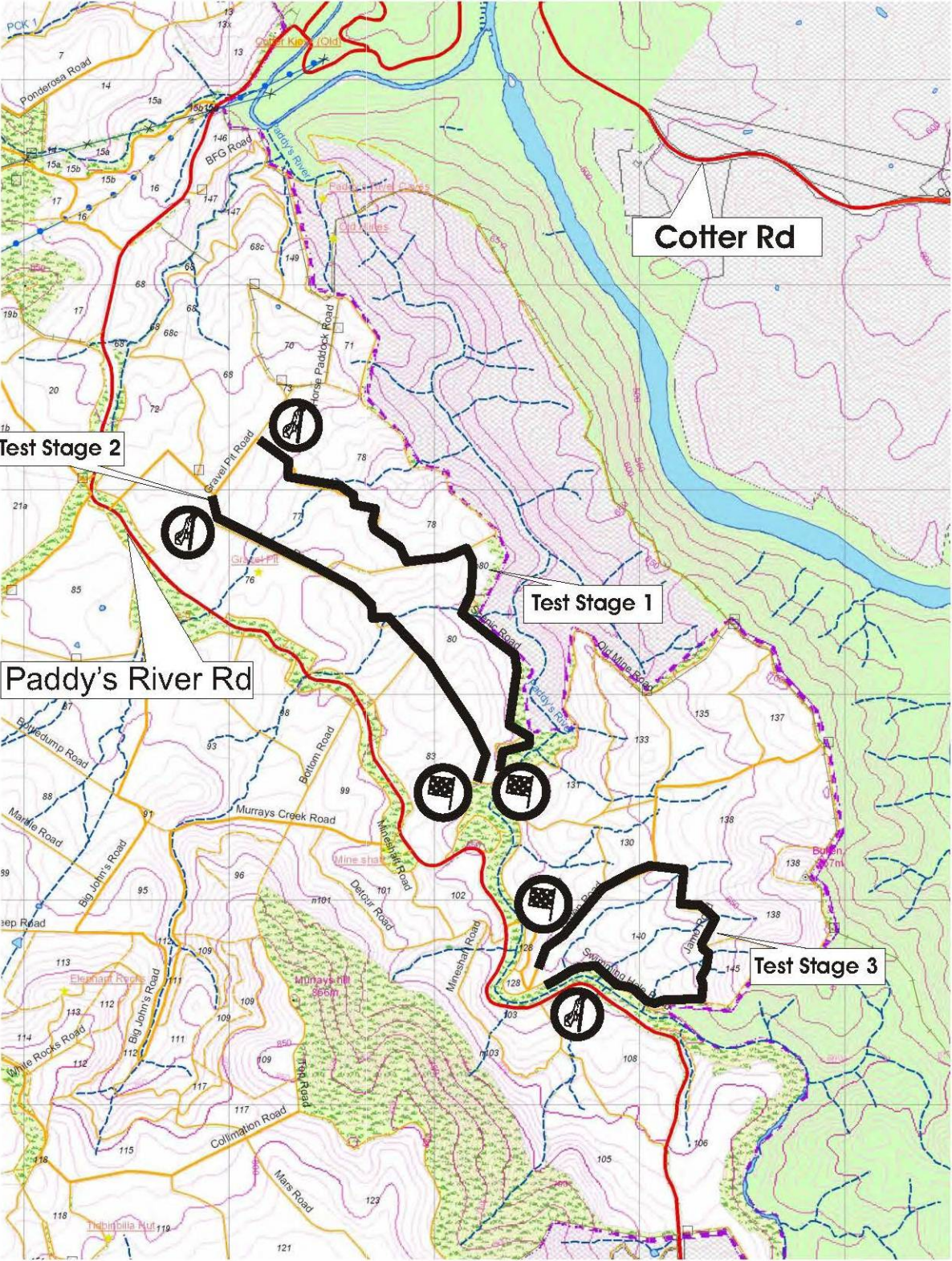
Hyles Block Corporate day
Monday 25th Feb



**NATIONAL CAPITAL
RALLY // 2013**



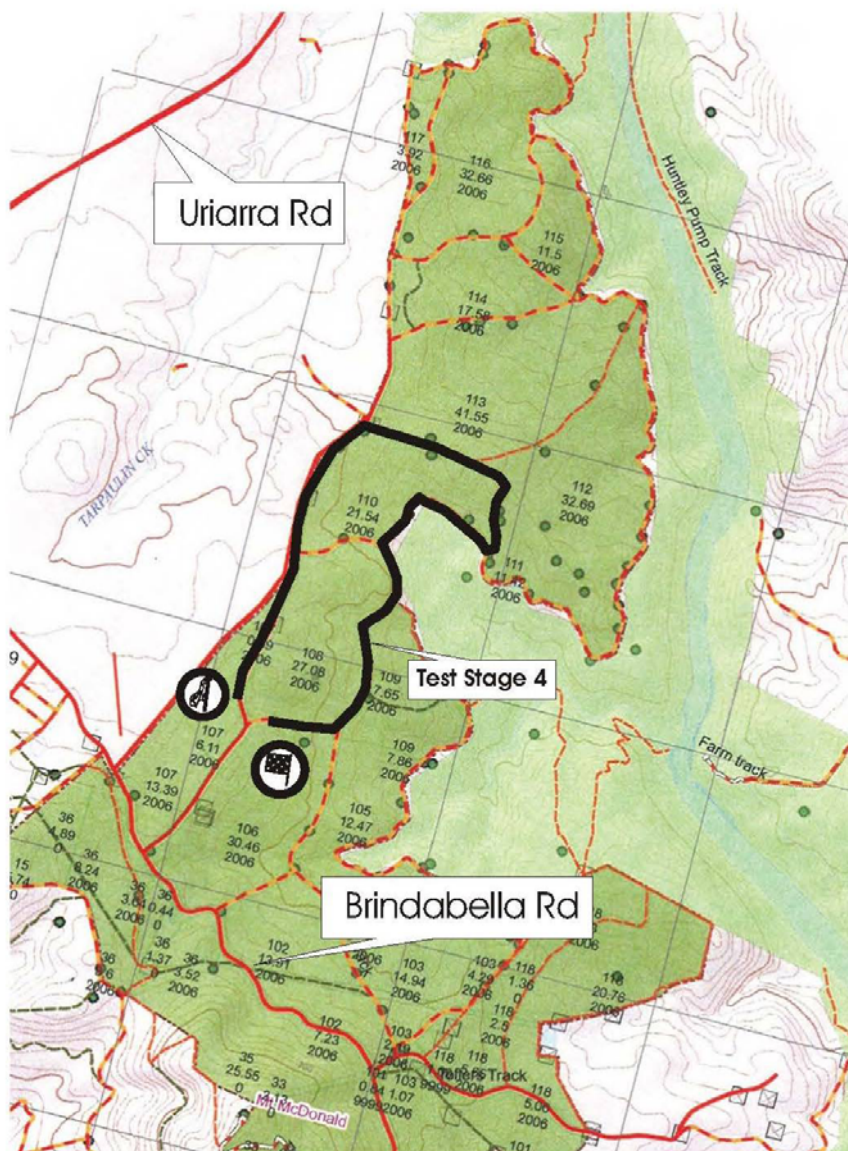
Pierces Testing
Wednesday 27th Feb

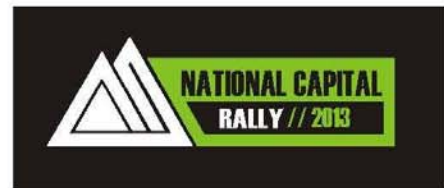


Hyles Block Testing
Wednesday 27th Feb

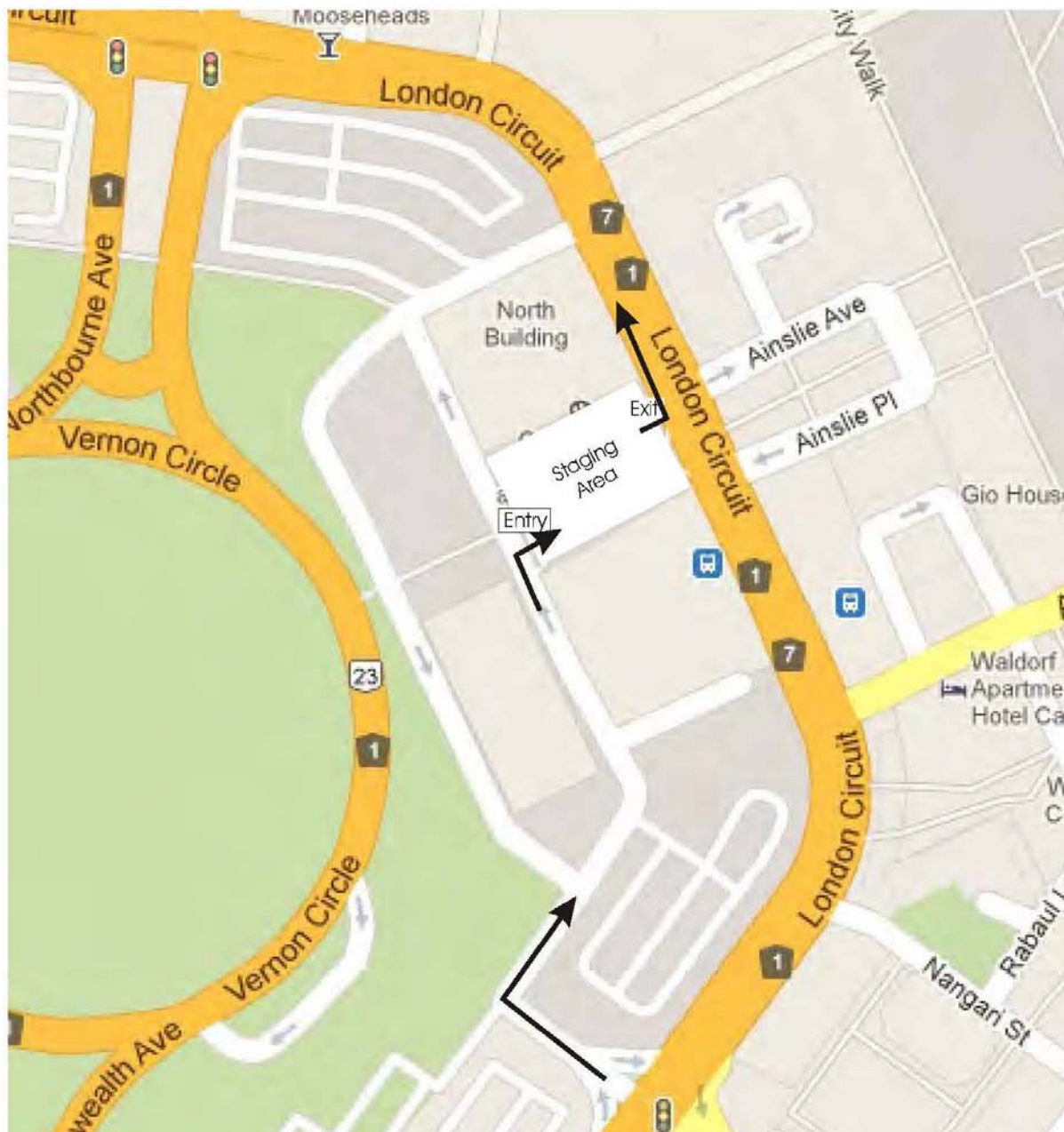


**NATIONAL CAPITAL
RALLY // 2013**

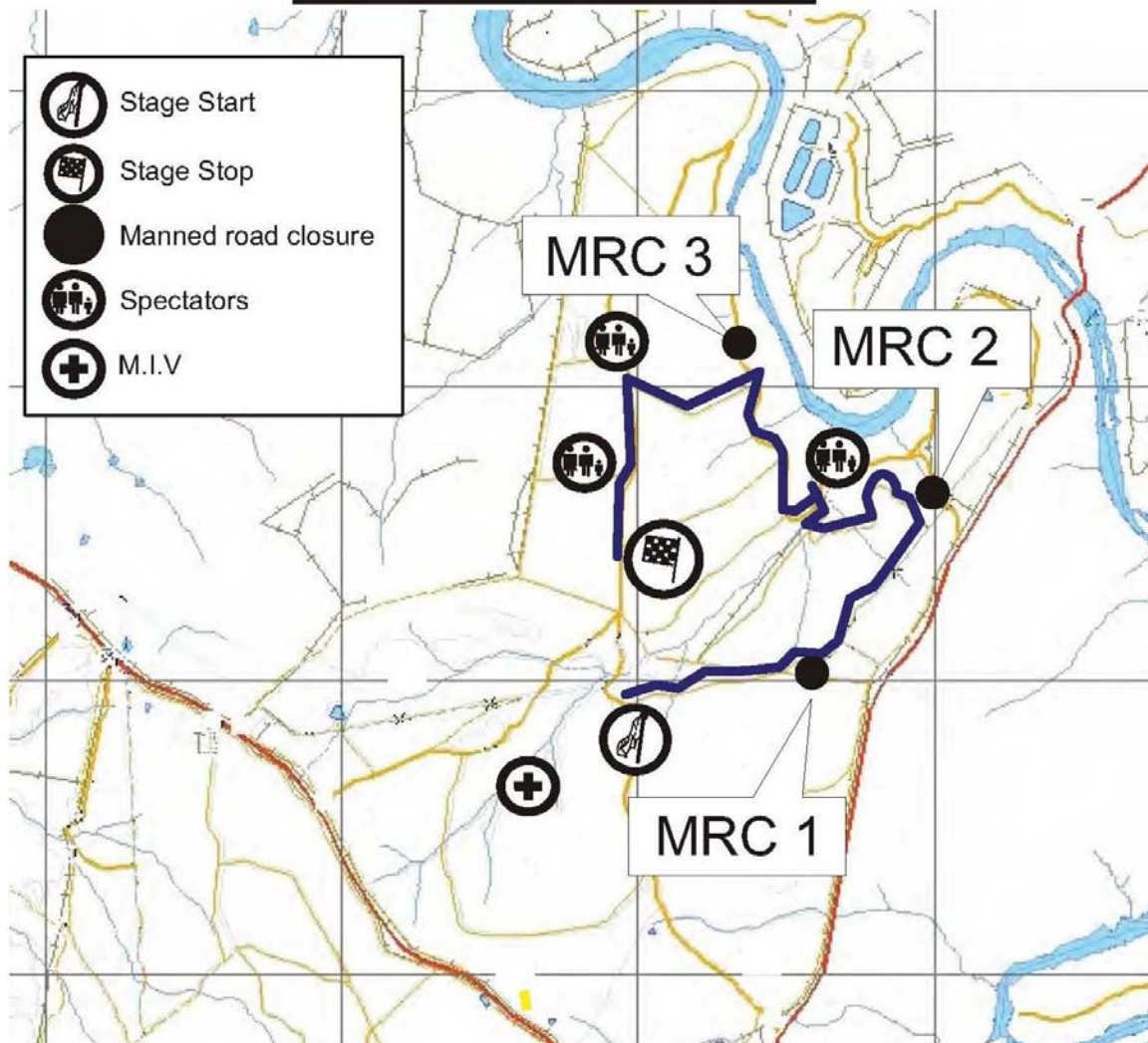




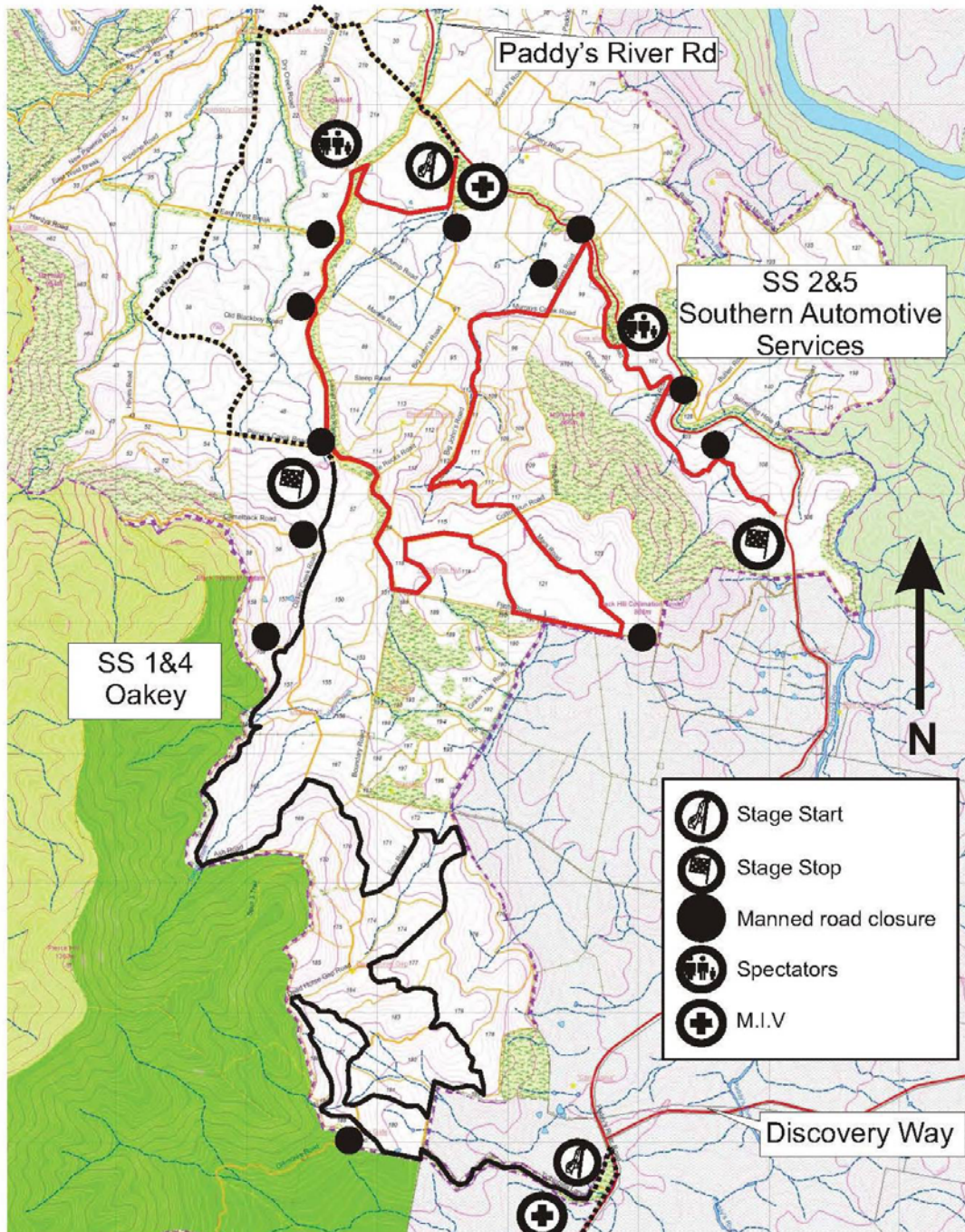
Ceremonial Start Friday 1st March



Power Stage Friday 1st March



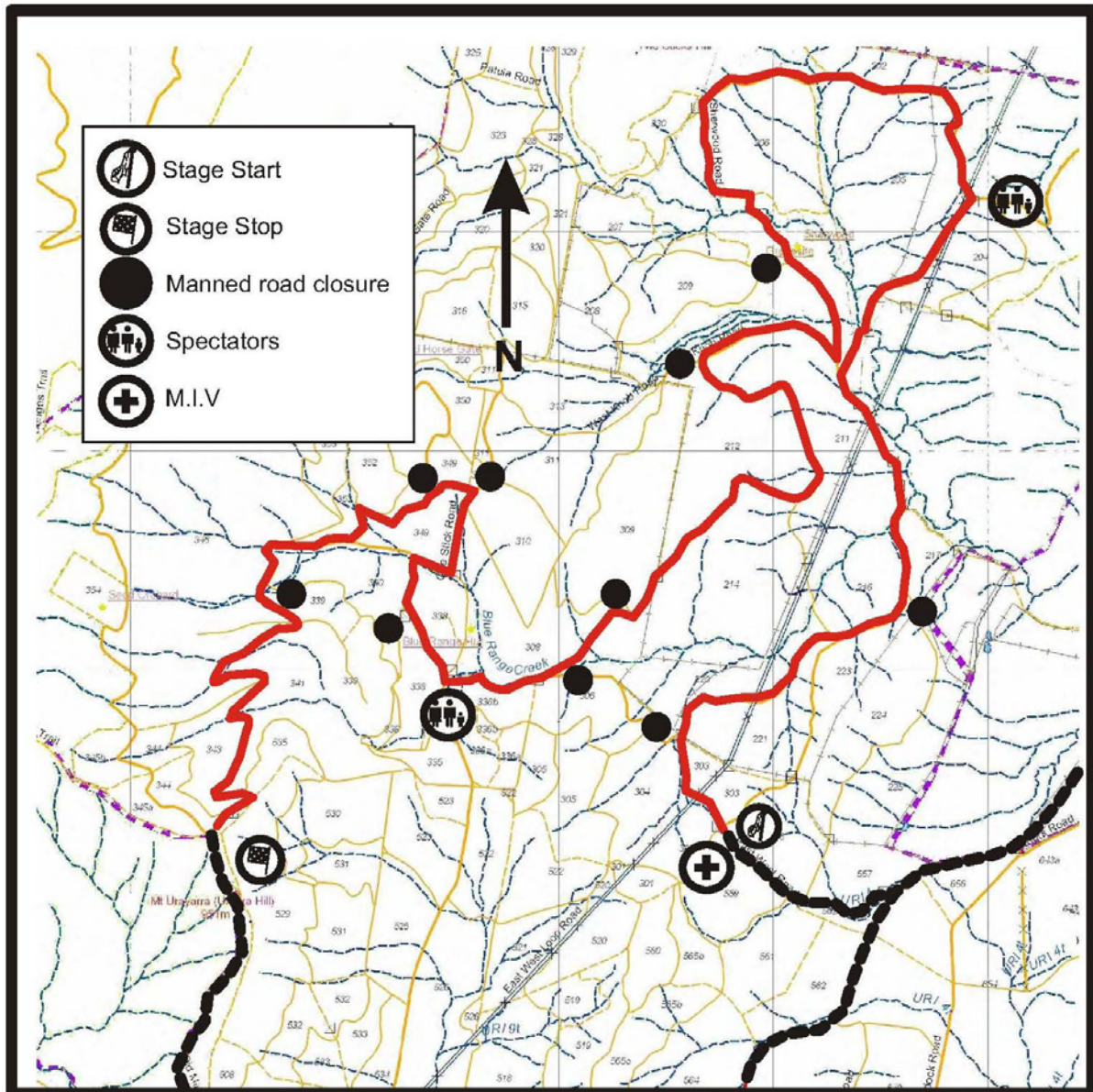
2013 National Capital Rally Day
Oakey Overview SS 1, 2, 4 & 5
March 2nd 2013

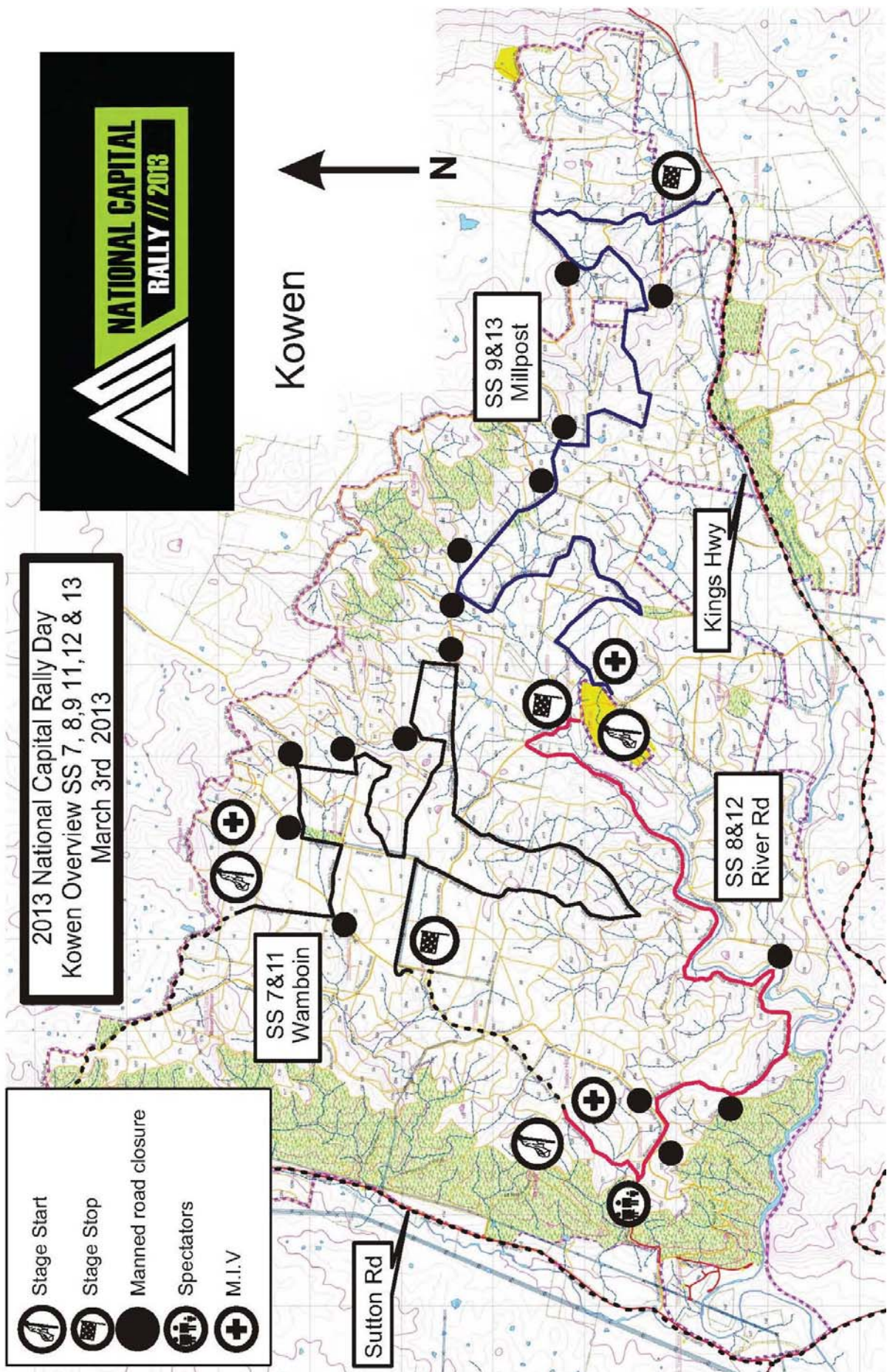


2013 National Capital Rally Day
East West 3 & 6
March 2nd 2013



**NATIONAL CAPITAL
RALLY // 2013**





Bluetts SS 10 Sunday 3rd March



**NATIONAL CAPITAL
RALLY // 2013**

