

Race and Sports Bookmaking (Sports Bookmaking Venues) Determination 2014 (No 10)

Disallowable Instrument DI2014—283

made under the

Race and Sports Bookmaking Act 2001, s21(1) - Determination of sports bookmaking venues

1. Name of Instrument

This Instrument is the Race and Sports Bookmaking (Sports Bookmaking Venues) Determination 2014 (No 10).

2. Commencement

This Instrument commences at 00:00am (midnight) on 4 November 2014 and concludes at 24:00pm (midnight) on the same day.

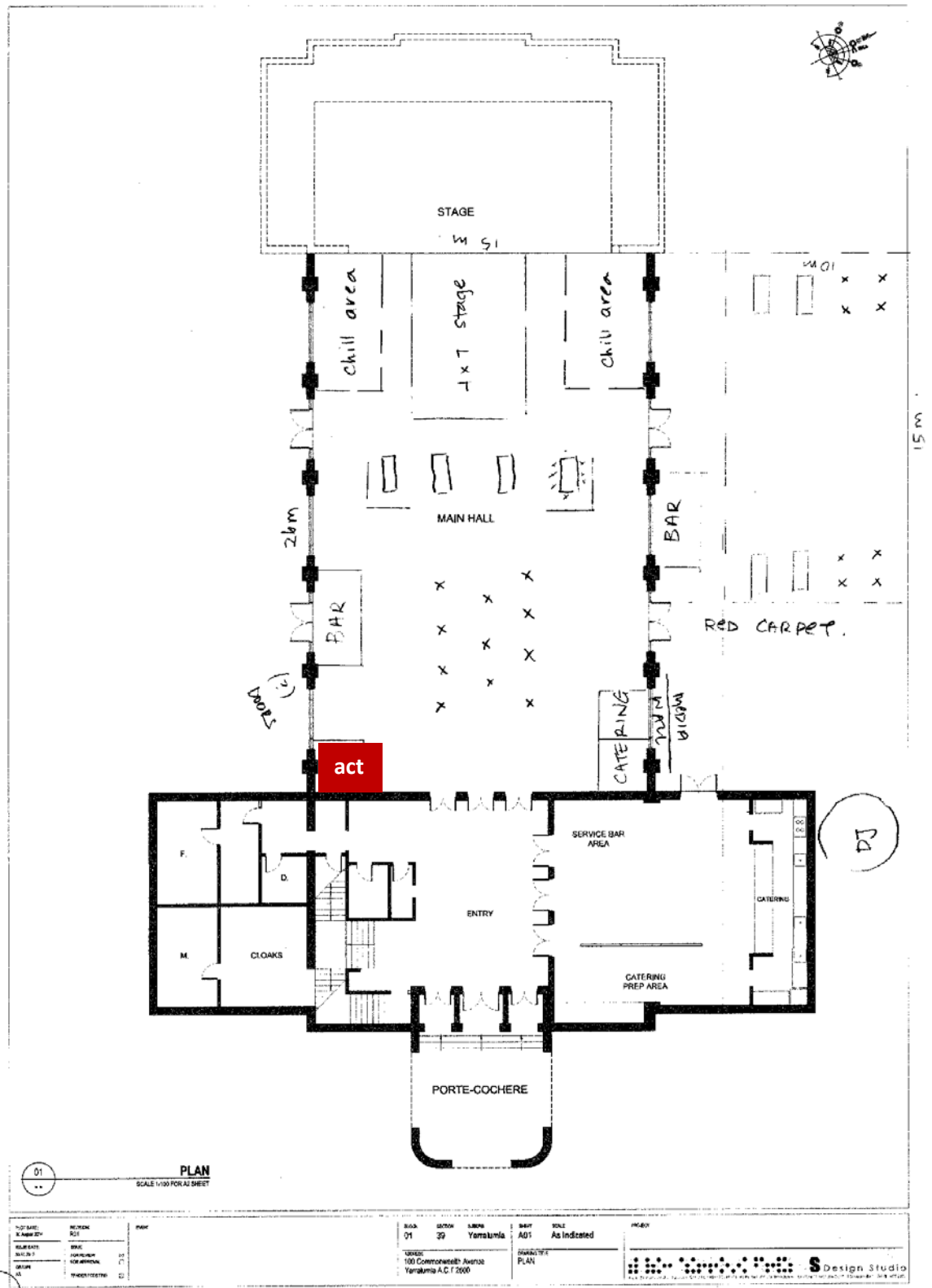
3. Determination

I determine that the area within 1 (one) metre of any selling terminal, owned and operated by Tabcorp ACT Pty Ltd at the temporary locations specified in the Schedule to this instrument as sports bookmaking venues. The terminals must generally be located at the position identified by the 'act' insignia at each venue as identified in the Schedule.

For the purposes of this determination a "selling terminal" is any Commission approved selling device, owned and operated by Tabcorp ACT Pty Ltd, the purpose of which is to provide retail sales of Tabcorp ACT Pty Ltd products.

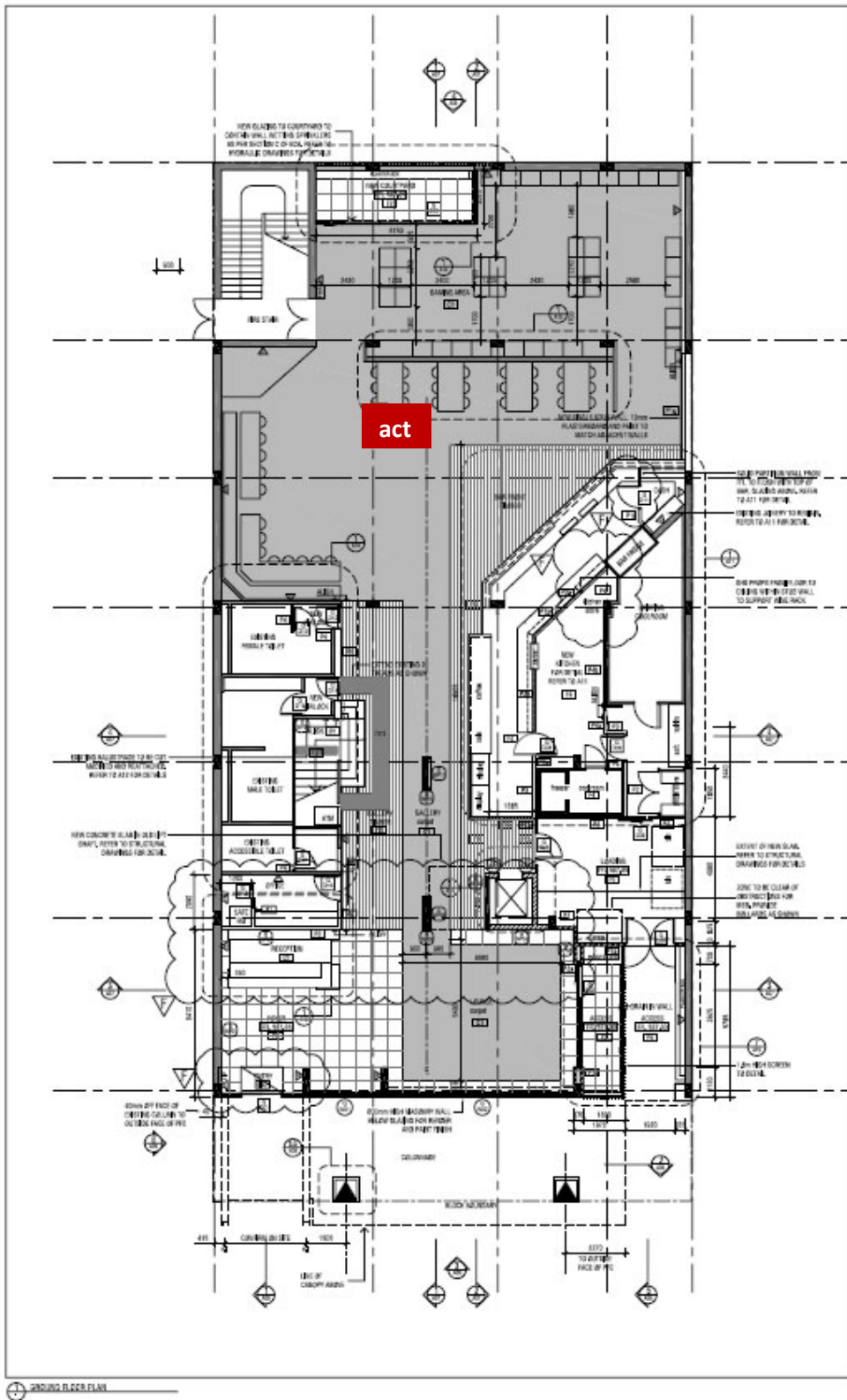
Greg Jones
Chief Executive
ACT Gambling and Racing Commission
3 November 2014

Albert Hall
100 Commonwealth Avenue, Yarralumla, 2601



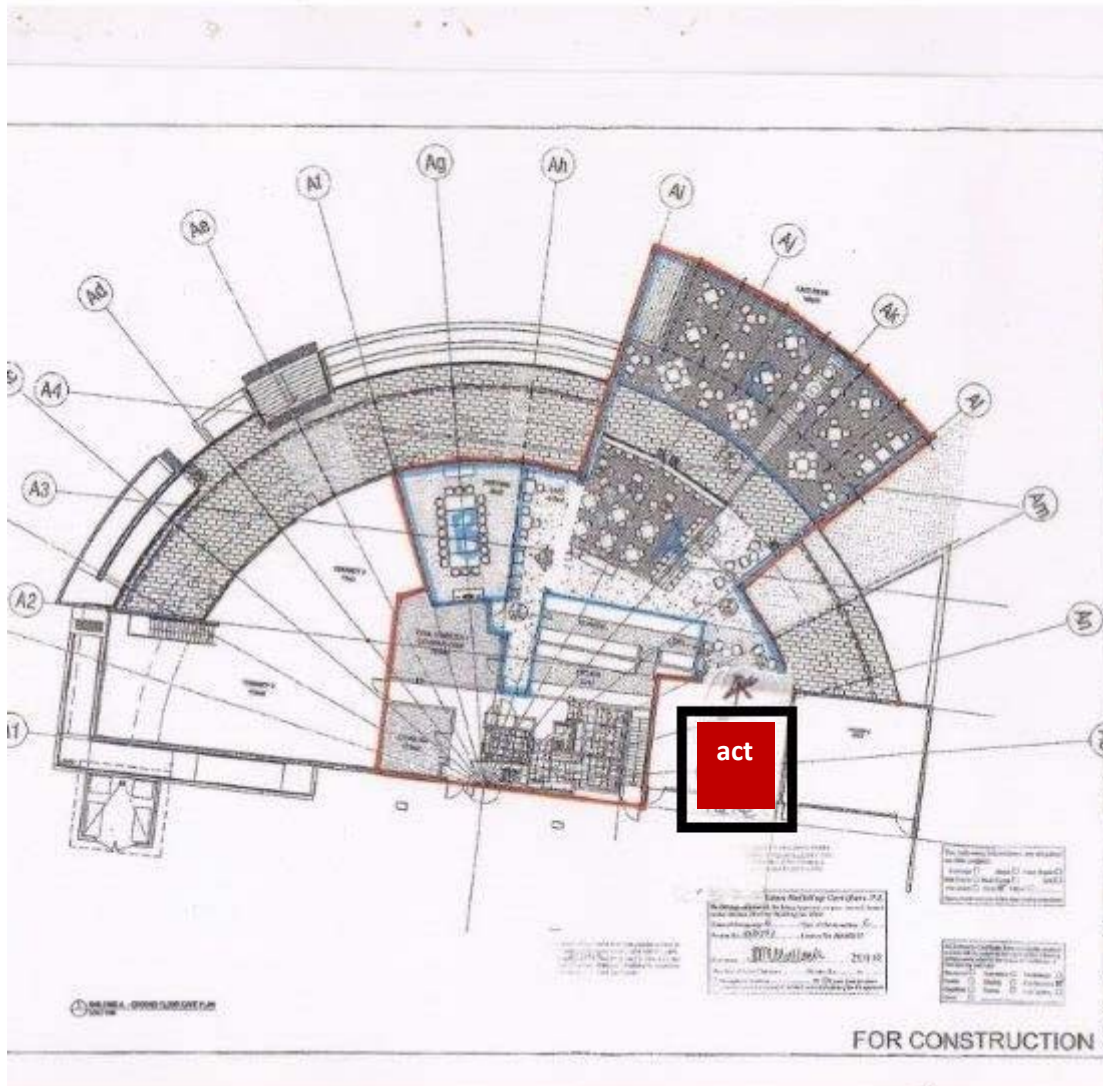
City Labor Club

1/14-16 Petrie Plaza, Canberra, 2601



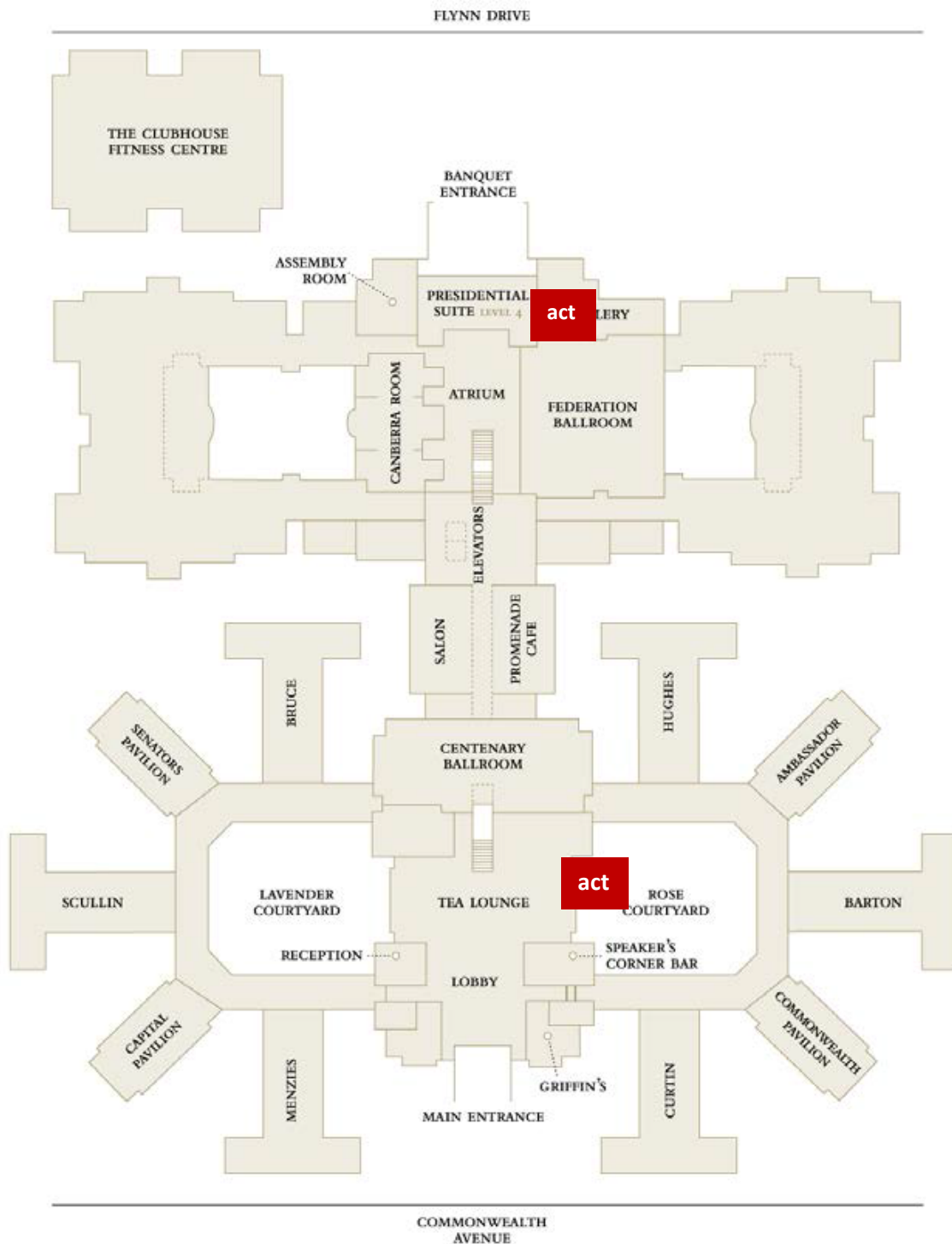
EQ Cafe

Equinox Business Park, 70 Kent Street, Deakin



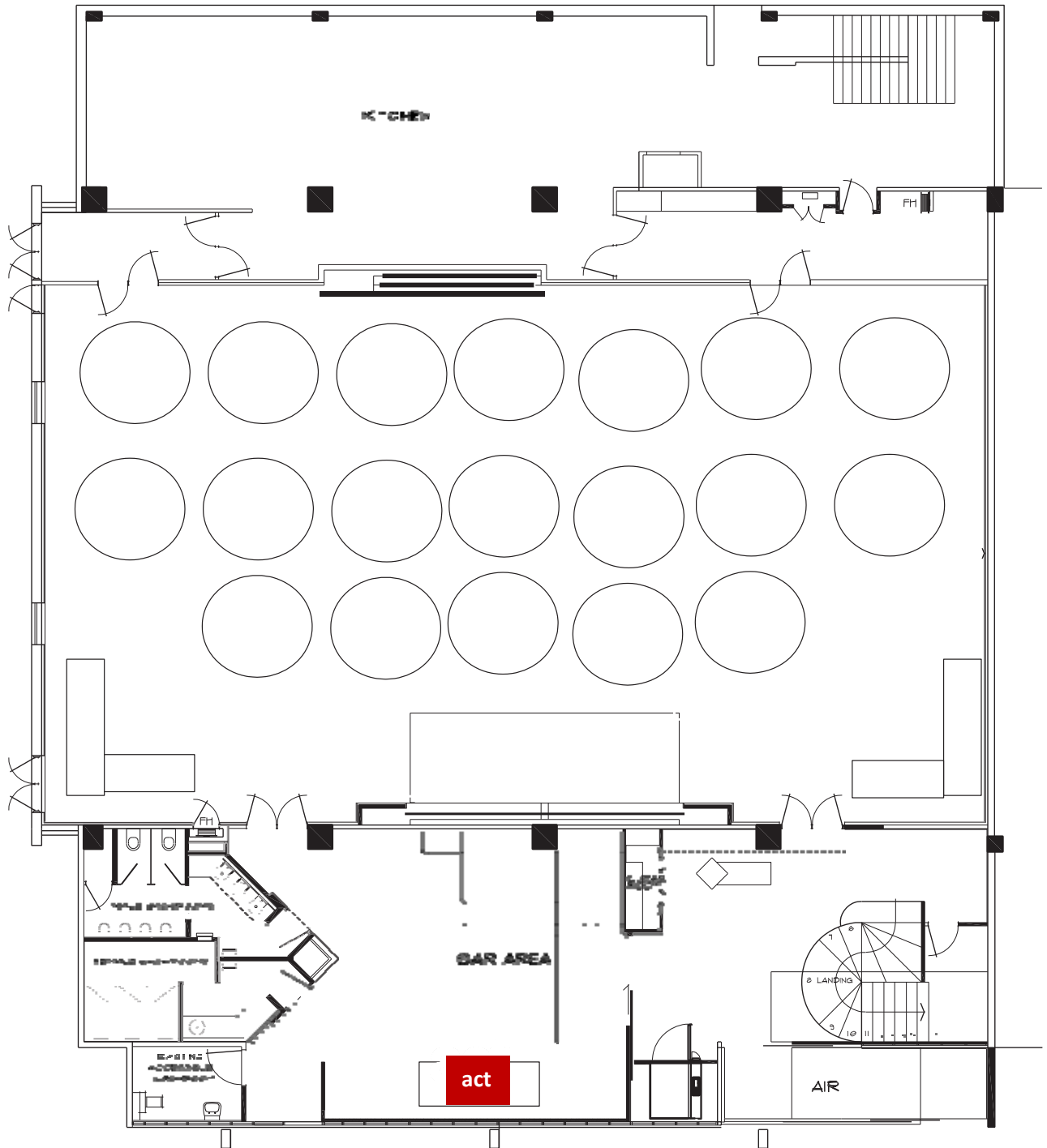
Hyatt Hotel

120 Commonwealth Avenue, Yarralumla, 2601

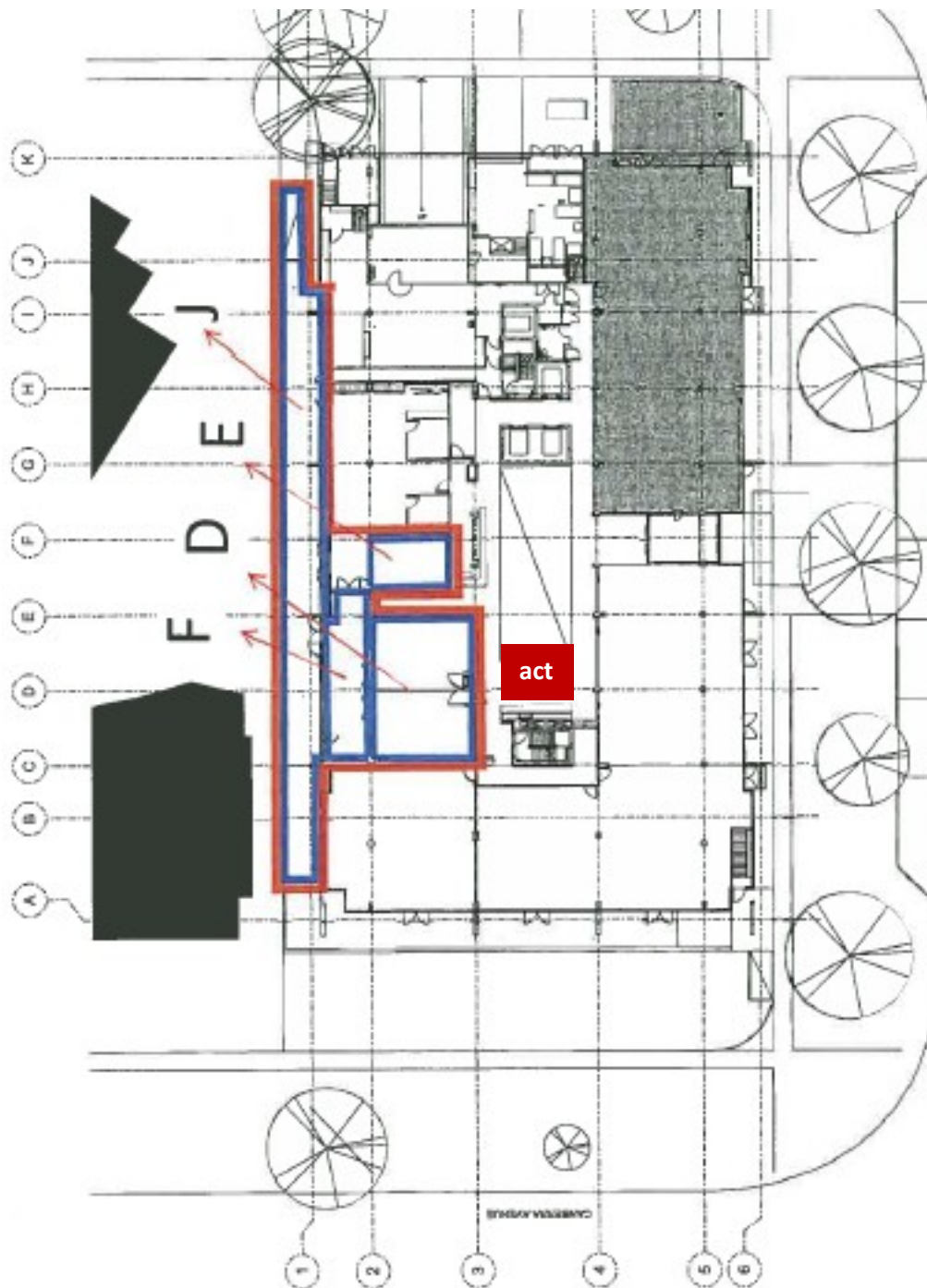


National Press Club
16 National Circuit, Barton, 2600

NATIONAL ROOM
Wedding Reception of
Renee & Andrew Saturday
27th October 2012

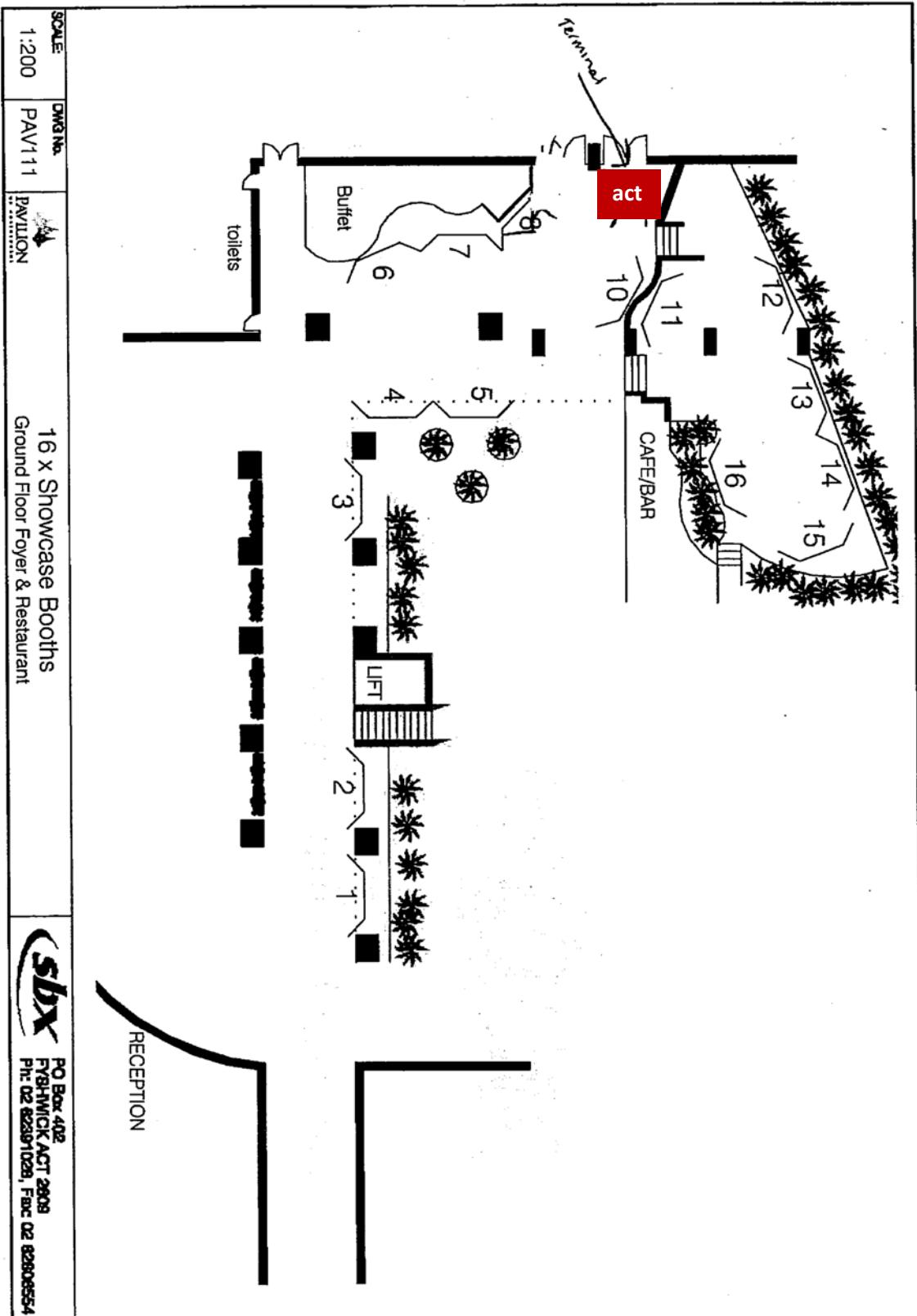


Ox Eatery East Hotel
69 Canberra Avenue, Kingston, 2604



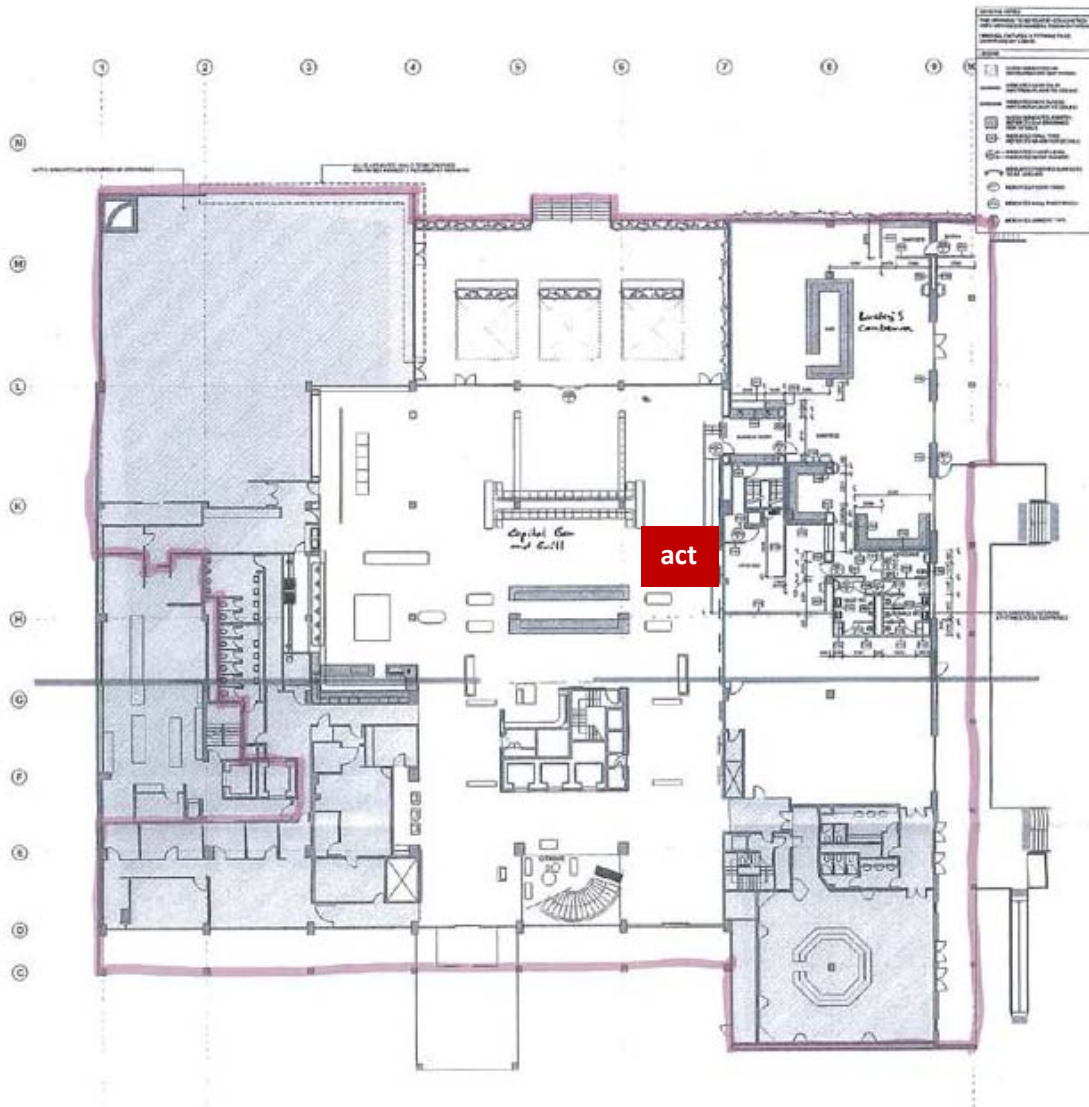
Pavilion Hotel

242 Northbourne Avenue, Dickson, 2602

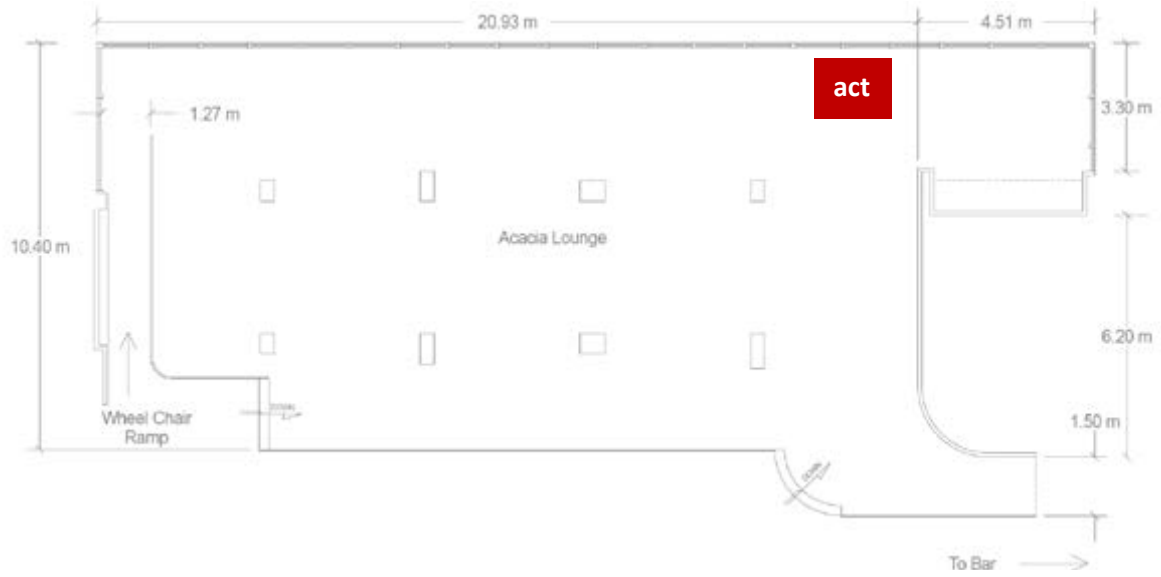


QT Hotel

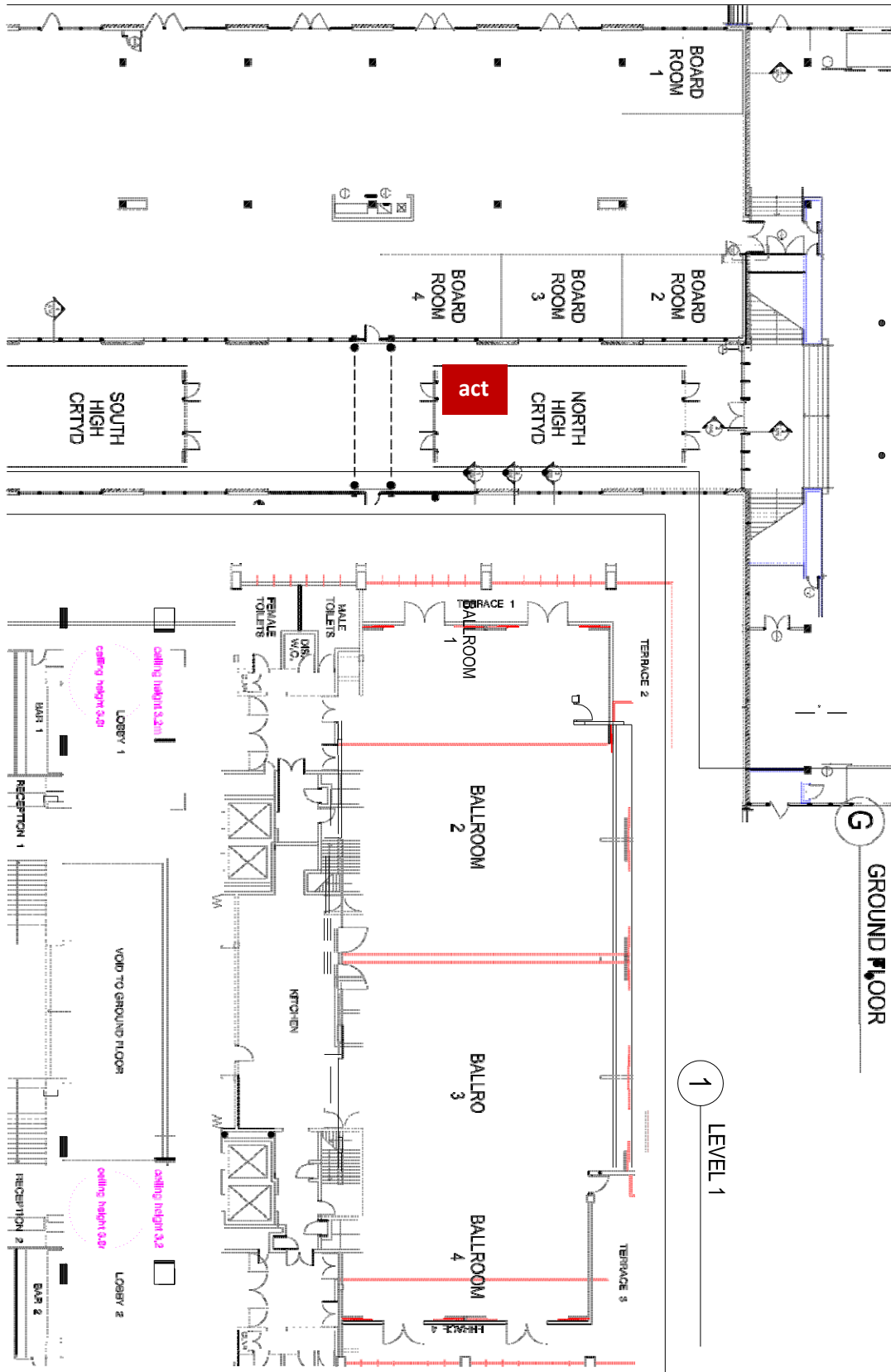
1 London Circuit, Canberra, 2601



Rydges Capital Hill
17 Canberra Avenue, Forrest, 2603



The Realm Hotel
18 National Circuit, Canberra, 2600



Siren Bar

Anthony Rolfe Avenue & Gozzard Street, Gungahlin, 2912

