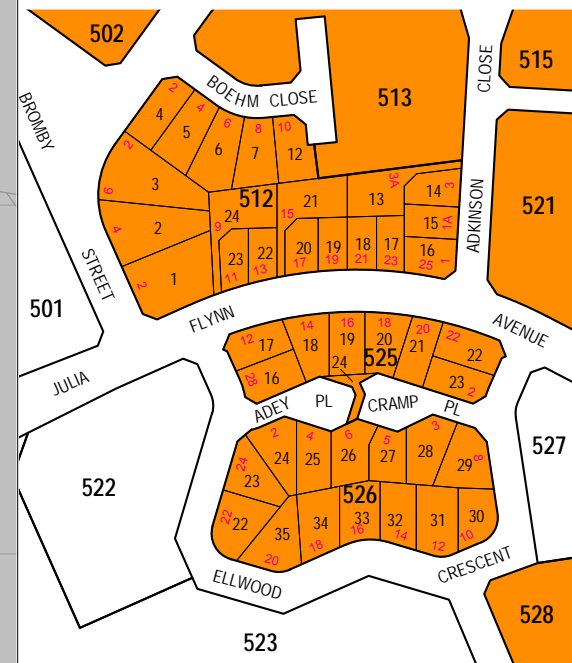


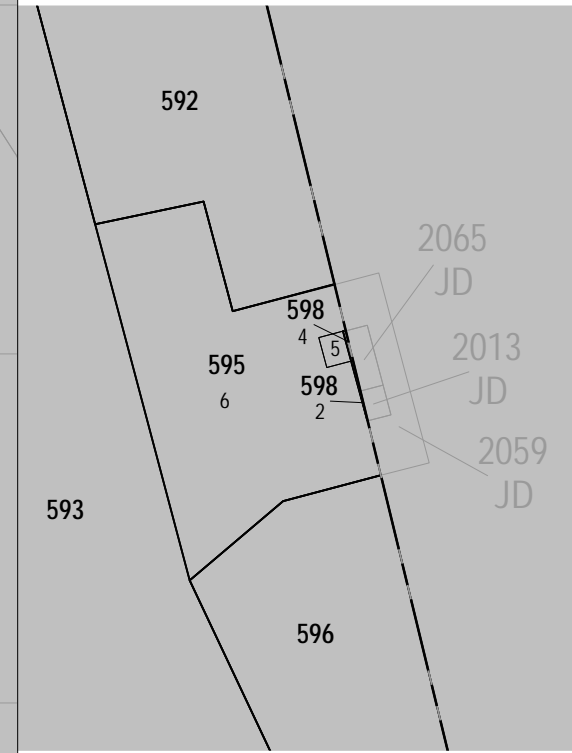
ISAACS

MAP INFORMATION CURRENT : December 2010
(See "User's Note" on the Contents Page)

- LEGEND**
- Residential**
- Locality A
 - Locality B
 - Locality C
- Commercial**
- Land Use Zone CZ1
 - Land Use Zone CZ2
 - Land Use Zone CZ3
 - Land Use Zone CZ4
 - Land Use Zone CZ5
- Industrial**
- Land Use Zone IZ1
 - Land Use Zone IZ2
 - Mixed Use A
 - Mixed Use B
 - Mixed Use C
 - General Use
- National Capital Authority**
- NCA Land



INSET A
0 50 100m
SCALE 1 : 3500



INSET B
0 10 20 30m
SCALE 1 : 1000

See INSET C on Sheet 2

See INSET B

208400E 208800E 209200E 209600E 210000E



LEGEND

Residential

- Locality A
- Locality B
- Locality C

Commercial

- Land Use Zone CZ1
- Land Use Zone CZ2
- Land Use Zone CZ3
- Land Use Zone CZ4
- Land Use Zone CZ5

Industrial

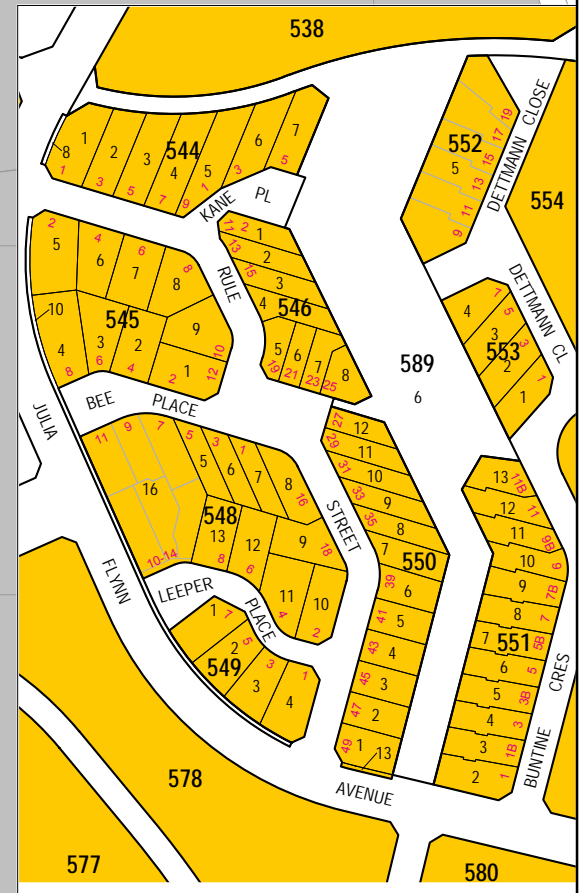
- Land Use Zone IZ1
- Land Use Zone IZ2

Mixed Use

- Mixed Use A
- Mixed Use B
- Mixed Use C
- General Use

National Capital Authority

- NCA Land



INSET C
 0 50 100m
 SCALE 1 : 3500



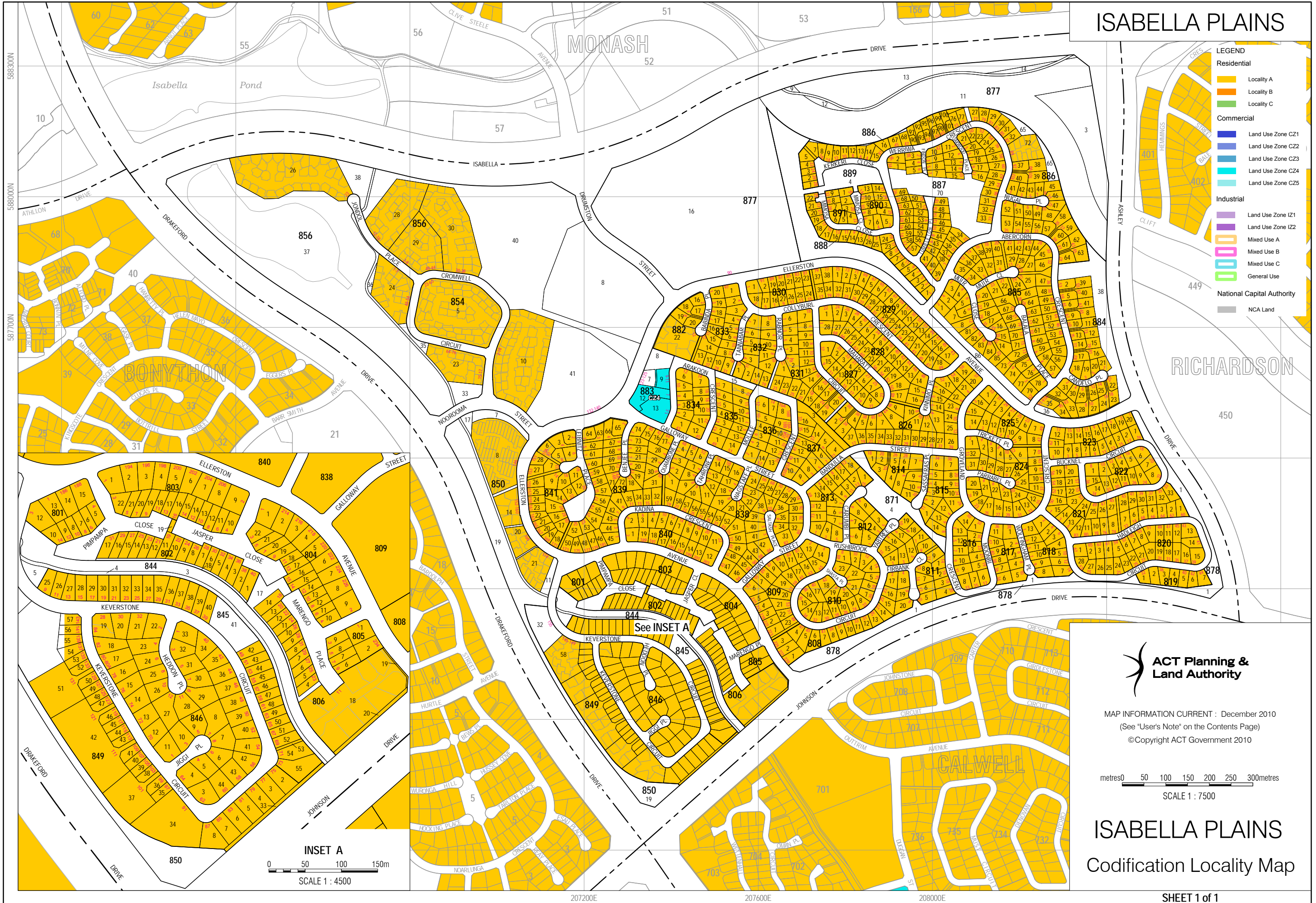
MAP INFORMATION CURRENT : December 2010
 (See "User's Note" on the Contents Page)
 ©Copyright ACT Government 2010

metres 0 50 100 150 200 250metres
 SCALE 1 : 6500

ISAACS

Codification Locality Map

ISABELLA PLAINS



MAP INFORMATION CURRENT : December 2010
 (See "User's Note" on the Contents Page)
 ©Copyright ACT Government 2010

metres 0 50 100 150 200 250 300metres

SCALE 1 : 7500

ISABELLA PLAINS Codification Locality Map

SHEET 1 of 1