

Australian Capital Territory

# **Dangerous Substances (Asbestos advice) Notice 2006 (No 1)**

**Notifiable Instrument NI2006-213**

made under the

**Dangerous Substance Act 2004, s 47J (1) (Asbestos advice)**

---

**1 Name of instrument**

This instrument is the *Dangerous Substances (Asbestos advice) Notice 2006 (No 1)*.

**2 Commencement**

This notice commences on 1 July 2006.

**3 Preparation of asbestos advice**

I have prepared the attached advice about the likely location of asbestos in residential premises built, or the building of which started, before 1985.

The attached asbestos advice has been prepared for use in either colour or black and white formats.

Andrew Barr  
Minister for Industrial Relations

21 June 2006

# Important Asbestos Advice for ACT homes built before 1985

**Asbestos is hazardous but it can be managed safely.**

**Follow the three steps for managing materials containing asbestos (MCAs) in your home.**

## Step 1. Identify where MCAs may be in your home

**When was your house built?**

- If your house was built before 1985, the table below gives you an indication of where you are likely to find MCAs in your home. There is also a diagram on the back of this sheet showing where MCAs are commonly found.
- If your house was built after 1985, it is unlikely to contain MCAs.
- If in doubt, assume that materials DO contain asbestos.

### Common locations of MCAs in ACT homes\*

(Percentage (%) of properties sampled where asbestos was detected)

Location	Pre 1965	1965–1979	1980–1984	1985–now <sup>†</sup>
Eaves	86%	92%	40%	0%
Garage/shed	80%	70%	15%	0%
Bathroom	54%	75%	50%	0%
Laundry	75%	80%	50%	0%
Kitchen	52%	23%	15%	0%

\*Results of 2005 Asbestos Survey of over 600 ACT Homes. <sup>†</sup>One MCA was found in a 1985 house supporting roof tiles on a gable end.

## Step 2. Assess the risk

**Visually check the condition of the MCA – is it cracked, broken, etc?**

- If it's in good condition and left undisturbed, it does not pose a health risk.
- If you suspect it is not in good condition, arrange for appropriate maintenance or removal by a qualified person.

## Step 3. Manage safely

**Make sure you remember to:**

- Keep an eye on MCAs to make sure they remain in good condition.
- Consider removal of the MCA by a qualified person, when renovating or doing home repairs.
- Inform tradespeople working on your home of the location of any possible MCAs.
- Engage a qualified person if you decide to obtain a professional asbestos report on MCAs in your home.

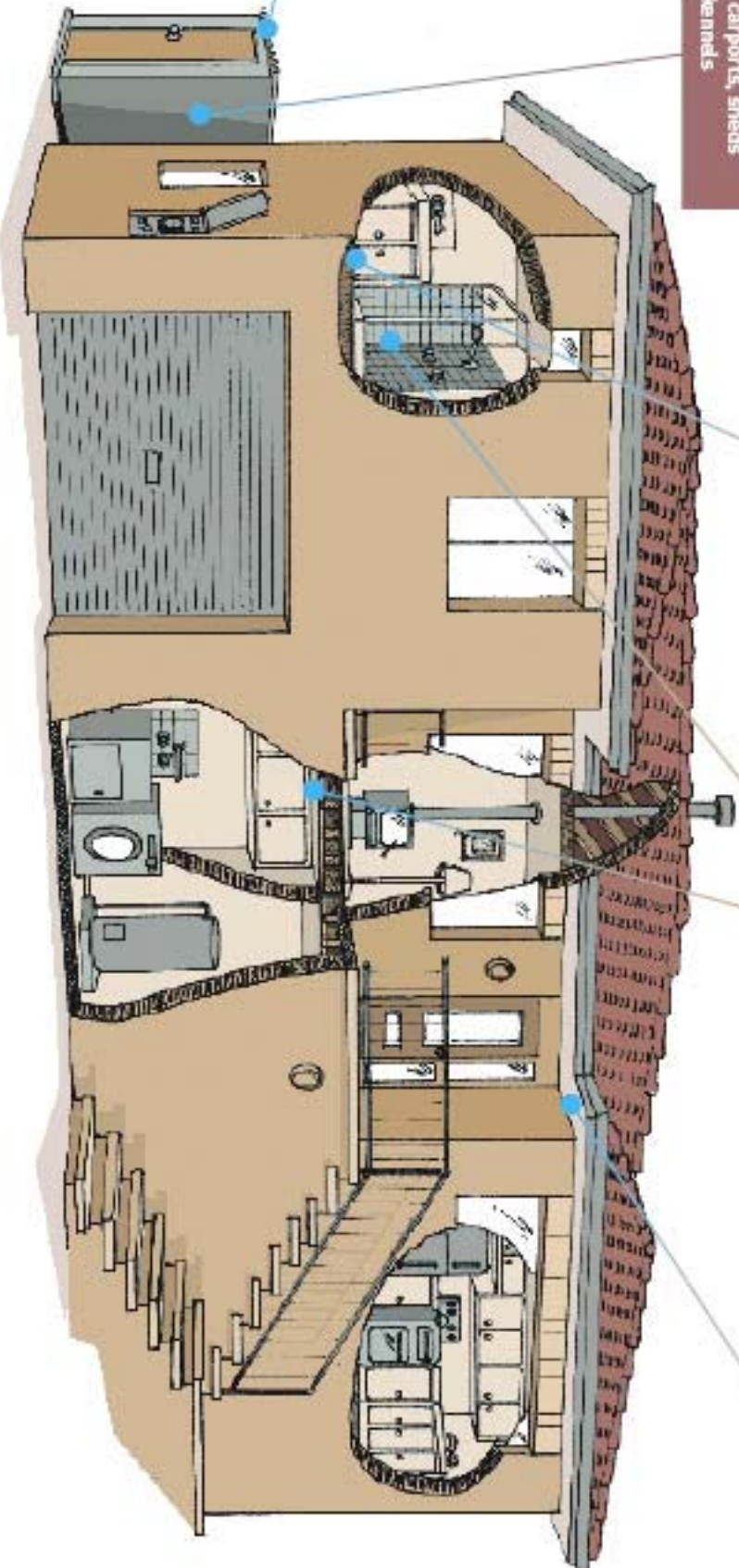
For further information or advice on managing asbestos or home renovations visit the asbestos website [www.asbestos.act.gov.au](http://www.asbestos.act.gov.au) or call 13 22 81.



**Asbestos Awareness.**  
Helping everyone breathe easier.

# Common locations of materials containing asbestos in ACT homes

If your house was built before 1985, some of the materials it was built from probably contain asbestos.



Asbestos Awareness.  
Helping everyone breathe easier.

# Important Asbestos Advice for ACT homes built before 1985

**Asbestos is hazardous but it can be managed safely.**

**Follow the three steps for managing materials containing asbestos (MCAs) in your home.**

## Step 1. Identify where MCAs may be in your home

**When was your house built?**

- If your house was built before 1985, the table below gives you an indication of where you are likely to find MCAs in your home. There is also a diagram on the back of this sheet showing where MCAs are commonly found.
- If your house was built after 1985, it is unlikely to contain MCAs.
- If in doubt, assume that materials DO contain asbestos.

### Common locations of MCAs in ACT homes\*

(Percentage (%) of properties sampled where asbestos was detected)

Location	Pre 1965	1965–1979	1980–1984	1985–now <sup>†</sup>
Eaves	86%	92%	40%	0%
Garage/shed	80%	70%	15%	0%
Bathroom	54%	75%	50%	0%
Laundry	75%	80%	50%	0%
Kitchen	52%	23%	15%	0%

\*Results of 2005 Asbestos Survey of over 600 ACT Homes. <sup>†</sup>One MCA was found in a 1985 house supporting roof tiles on a gable end.

## Step 2. Assess the risk

**Visually check the condition of the MCA – is it cracked, broken, etc?**

- If it's in good condition and left undisturbed, it does not pose a health risk.
- If you suspect it is not in good condition, arrange for appropriate maintenance or removal by a qualified person.

## Step 3. Manage safely

**Make sure you remember to:**

- Keep an eye on MCAs to make sure they remain in good condition.
- Consider removal of the MCA by a qualified person, when renovating or doing home repairs.
- Inform tradespeople working on your home of the location of any possible MCAs.
- Engage a qualified person if you decide to obtain a professional asbestos report on MCAs in your home.

For further information or advice on managing asbestos or home renovations visit the asbestos website [www.asbestos.act.gov.au](http://www.asbestos.act.gov.au) or call 13 22 81.



**Asbestos Awareness.**  
Helping everyone breathe easier.

# Common locations of materials containing asbestos in ACT homes

If your house was built before 1985, some of the materials it was built from probably contain asbestos.



Garages, carports, sheds and dog kennels



Wet areas including wall and ceiling lining



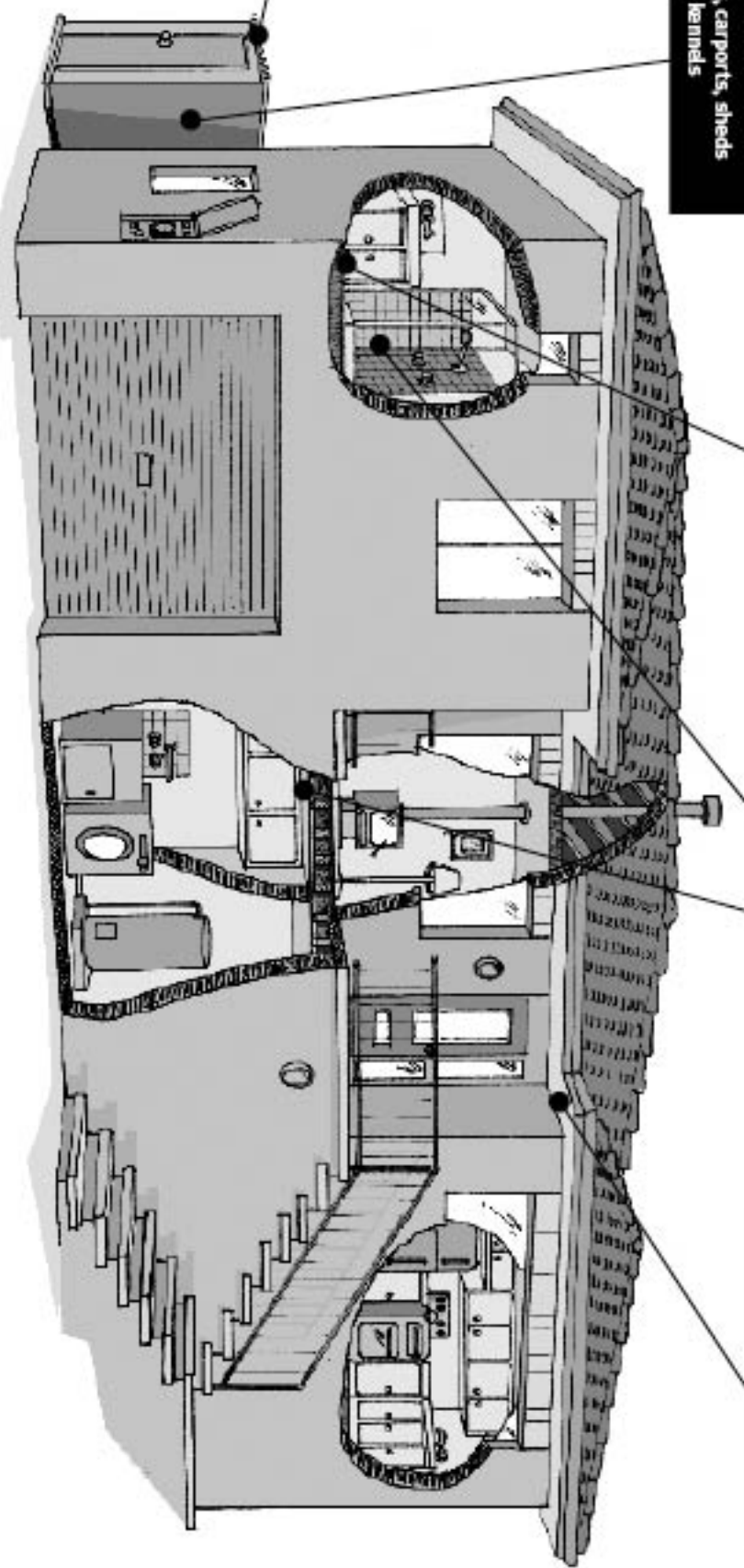
Wet areas including wall and ceiling lining



EWBBS



Corrugated asbestos roofing



Asbestos Awareness.  
Helping everyone breathe easier.