

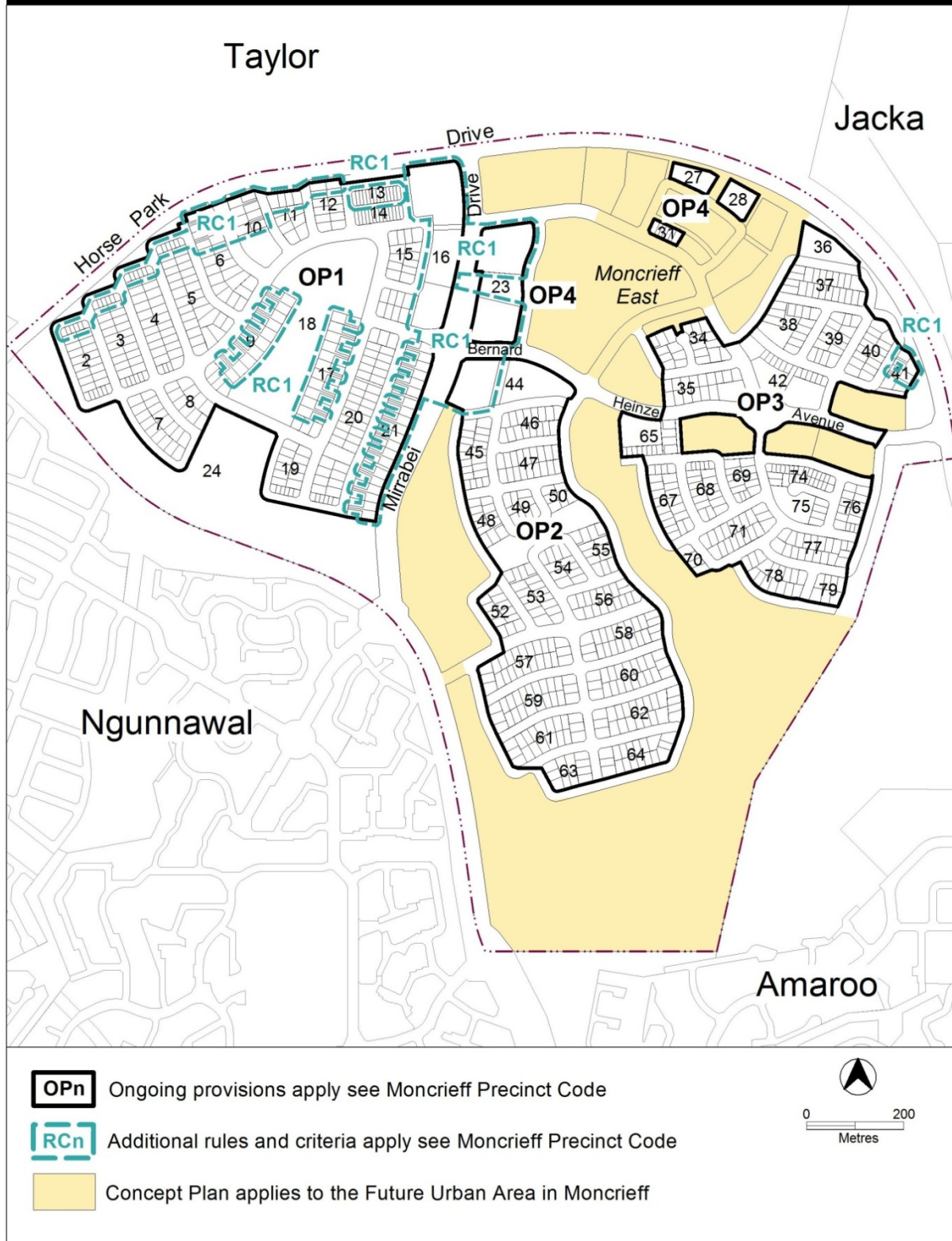


ACT
Government
Environment and Planning

Moncrieff Precinct Map and Code

This page is intentionally blank.

Moncrieff Precinct Map



Assessment Tracks

No additional provisions apply.

Moncrieff Precinct Code

Contents

Introduction.....	4
Additional rules and criteria	6
RC1 – Residential	6
Element 1: Building and site controls	6
1.1 Setbacks	6
Element 2: Amenity	7
2.1 Acoustic mitigation measures	7
Other ongoing provisions.....	12
OP1 – Moncrieff residential area.....	12
OP2 – Moncrieff residential area.....	13
OP3 – Moncrieff residential area.....	14
OP4 – Moncrieff residential area.....	15

Figures

Figure 1 Moncrieff residential area 1	8
Figure 2 Moncrieff residential area 2.....	9
Diagram 1 Elevation of acoustic privacy fence.....	10
Figure 3 Moncrieff residential area 3.....	10
Figure 4 Moncrieff residential area 4.....	11
Figure 5 Moncrieff residential area ongoing provisions	12
Figure 6 Moncrieff residential area ongoing provisions	13
Figure 7 Moncrieff residential area ongoing provisions	14
Figure 8 Moncrieff residential area ongoing provisions	15

Introduction

Name

The name of this code is the **Moncrieff Precinct Code**.

Application

The code applies to the Division of Moncrieff.

Purpose

This code provides additional planning, design and environmental controls for specific areas or blocks and may also contain references to provisions in other codes.

In conjunction with other relevant codes it will be used by the *Authority* to assess development applications and offer guidance to intending applicants in designing development proposals and preparing development applications.

Structure

This code contains additional rules and/or criteria for particular blocks or parcels identified as areas RCn on the precinct map, to be read in conjunction with the relevant development code. It may also contain sub-parts.

Each element has one or more rules and, unless the respective rule is mandatory, each rule has an associated criterion. Rules provide quantitative, or definitive, controls. By contrast, criteria are chiefly qualitative in nature.

In some instances rules are mandatory. Such rules are accompanied by the words “This is a mandatory requirement. There is no applicable criterion.” Non-compliance with a mandatory rule will result in the refusal of the development application. Conversely, the words “There is no applicable rule” is found where a criterion only is applicable.

Code hierarchy

Under the *Planning and Development Act 2007*, where more than one type of code applies to a development, the order of precedence if there is inconsistency of provisions between codes is: precinct code, development code and general code.

If more than one precinct code applies to the site, the most recent precinct code takes precedence to the extent of any inconsistency.

Definitions

Defined terms, references to legislation and other documents are italicised.

Definitions of terms used in this code are listed in part 13 of the Territory Plan or, for terms applicable only to this code, associated with the respective rule.

Acronyms

EPA	ACT Environment Protection Authority
ESA	ACT Emergency Services Agency
ESDD	ACT Environment and Sustainable Development Directorate
NCA	National Capital Authority
P&D Act	Planning and Development Act 2007
TAMS	ACT Territory and Municipal Services Directorate

Additional rules and criteria

This part applies to blocks and parcels identified in the Moncrieff Precinct Map (RCn). It should be read in conjunction with the relevant zone development code and related codes.

RC1 – Residential

This part applies to blocks and parcels identified in area RC1 shown on the Moncrieff Precinct Map.

Element 1: Building and site controls

Rules	Criteria
1.1 Setbacks	
R1 This rule applies to blocks identified in Figure 1. Additional zero boundary setback to permit garage construction.	This is a mandatory requirement. There is no applicable criterion.
R2 This rule applies to blocks or parcels in locations identified in Figure 3. Transparent type fencing to be provided on boundary to open space in accordance with Residential Boundary Fences General Code – part 2.5 Battle Axe Blocks and Blocks with frontages to Open Space.	This is a mandatory requirement. There is no applicable criterion.
R3 This rule applies to blocks or parcels in locations identified in Figures 2 and 3. Access is not permitted to Mirrabai Drive from adjacent blocks.	This is a mandatory requirement. There is no applicable criterion.
R4 This rule applies to blocks or parcels in locations identified in Figures 2 and 3. Minimum setback of 6m applies to all floors adjacent to the future Intertown Public Transport (IPT) corridor.	This is a mandatory requirement. There is no applicable criterion.

Element 2: Amenity

Rules	Criteria
2.1 Acoustic mitigation measures	
<p>R5</p> <p>This rule applies to blocks or parcels in locations identified in Figures 1, 2 and 4.</p> <p>Acoustic insulation to be provided to the upper floor level of the dwelling in accordance with <i>AS/NZS 2107:2000 Acoustics – Recommended design sound levels and reverberation times for building interiors</i>.</p>	<p>This is a mandatory requirement. There is no applicable criterion.</p>
<p>R6</p> <p>This rule applies to blocks or parcels in locations identified in Figure 3.</p> <p>Acoustic insulation to be provided to all floors of the dwelling in accordance with <i>AS/NZS 2107:2000 Acoustics – Recommended design sound levels and reverberation times for building interiors</i>.</p>	<p>This is a mandatory requirement. There is no applicable criterion.</p>
<p>R7</p> <p>This rule applies to blocks or parcels in locations identified in Figure 2.</p> <p>Multi unit site along Horse Park Drive and Mirrabai Drive to be assessed for acoustic requirements on an individual basis.</p>	<p>This is a mandatory requirement. There is no applicable criterion.</p>
<p>R8</p> <p>This rule applies to blocks or parcels in locations identified in Figures 1, 2 and 4.</p> <p>Acoustic privacy fencing to be provided by the lessee.</p> <p>See Diagram 1 for an elevation of a typical acoustic privacy fence</p>	<p>This is a mandatory requirement. There is no applicable criterion.</p>
<p>R9</p> <p>This rule applies to blocks or parcels in locations identified in Figure 2.</p> <p>Multi unit sites are to be assessed for acoustic requirements on an individual basis taking into consideration the future IPT corridor and associated terminus.</p>	<p>This is a mandatory requirement. There is no applicable criterion.</p>

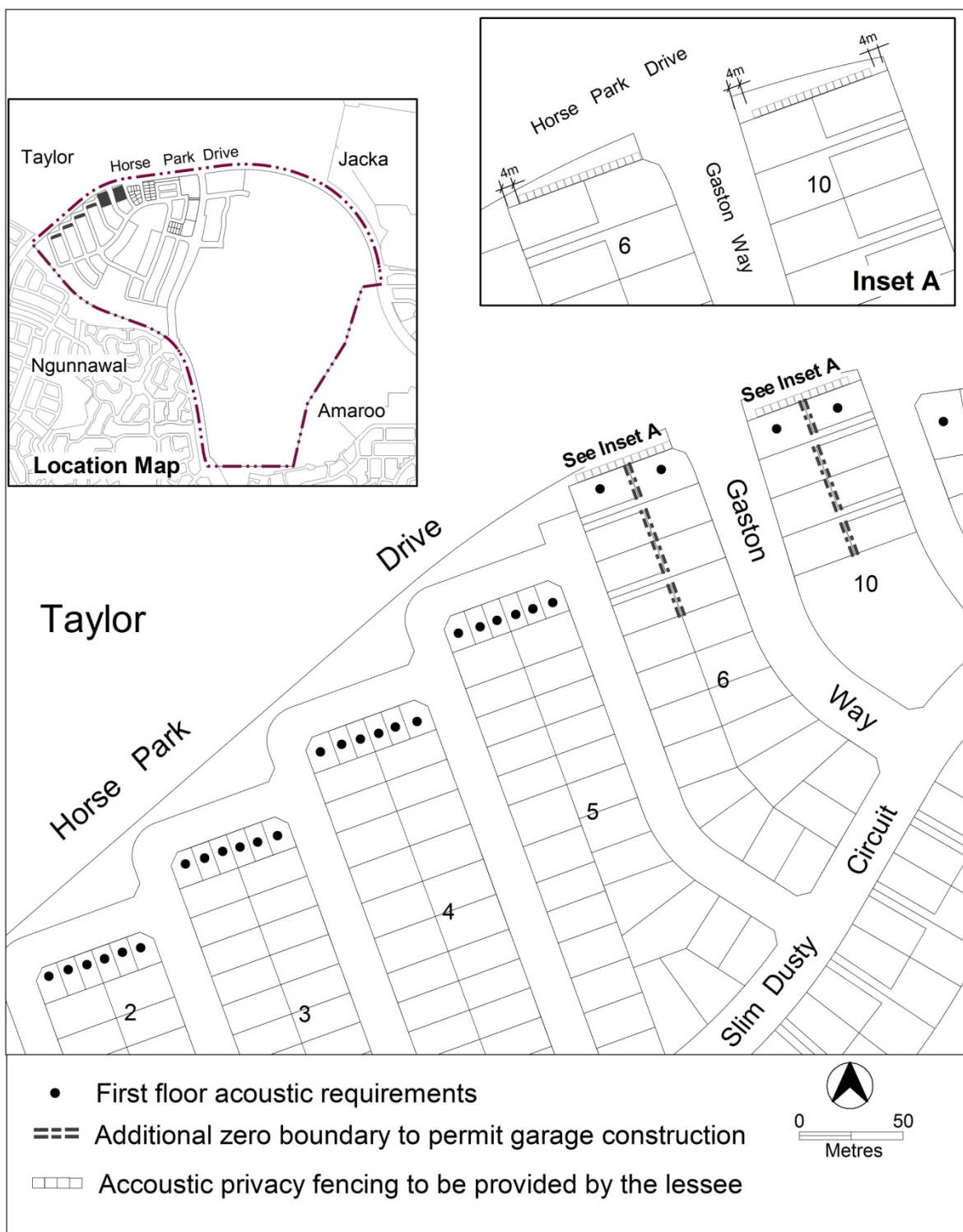


Figure 1 Moncrieff residential area 1

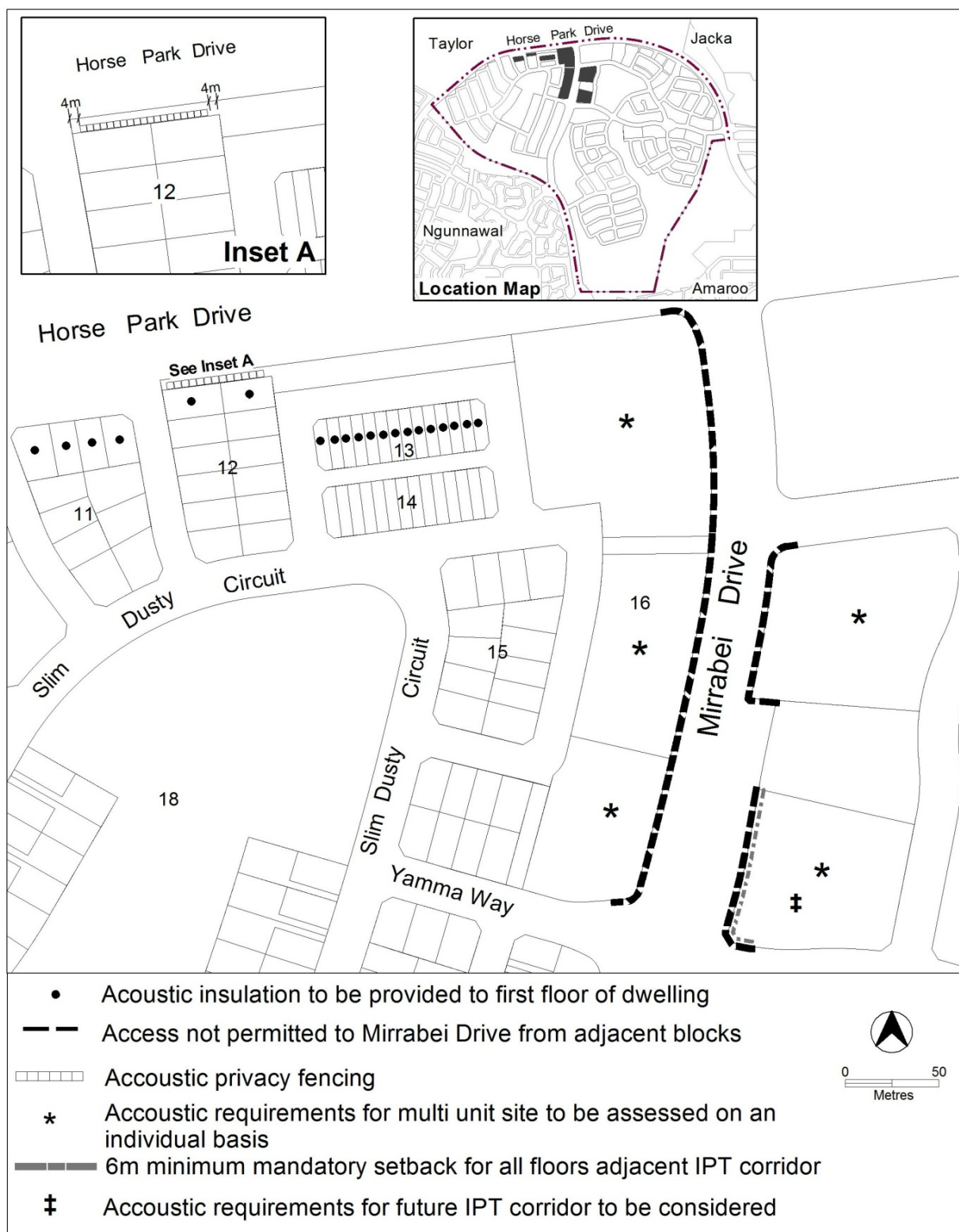


Figure 2 Moncrieff residential area 2

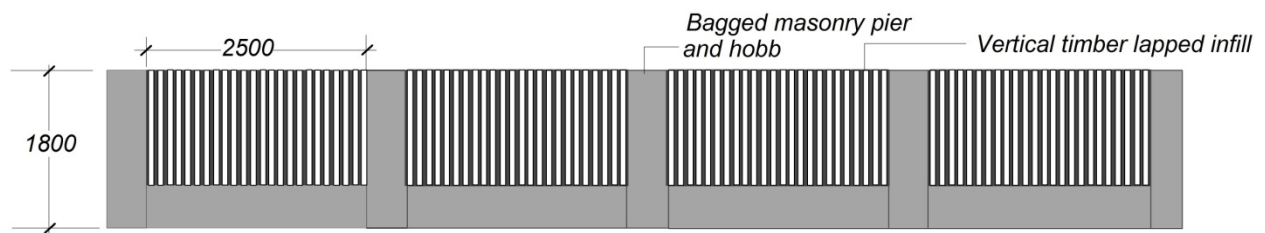


Diagram 1 Elevation of acoustic privacy fence

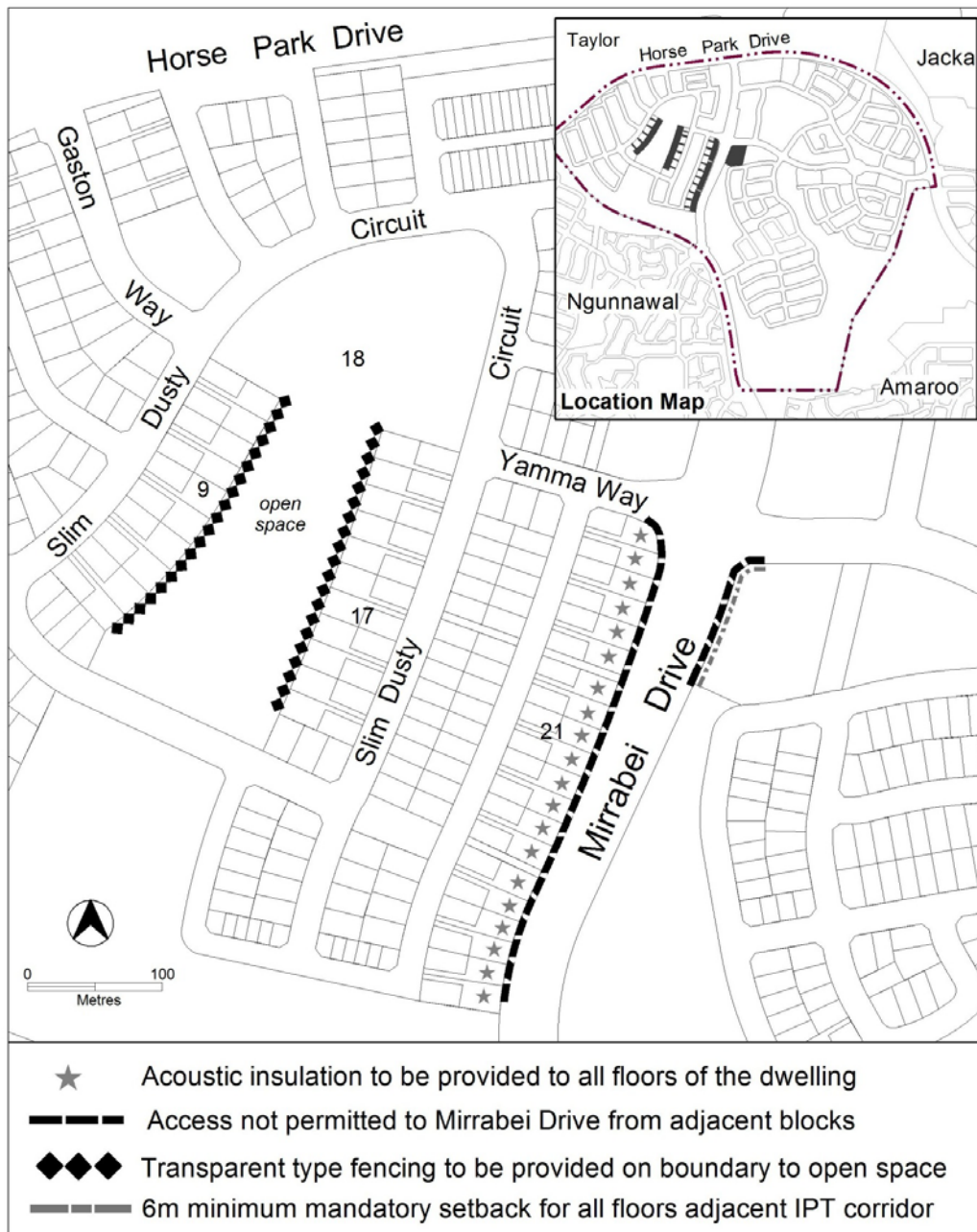


Figure 3 Moncrieff residential area 3

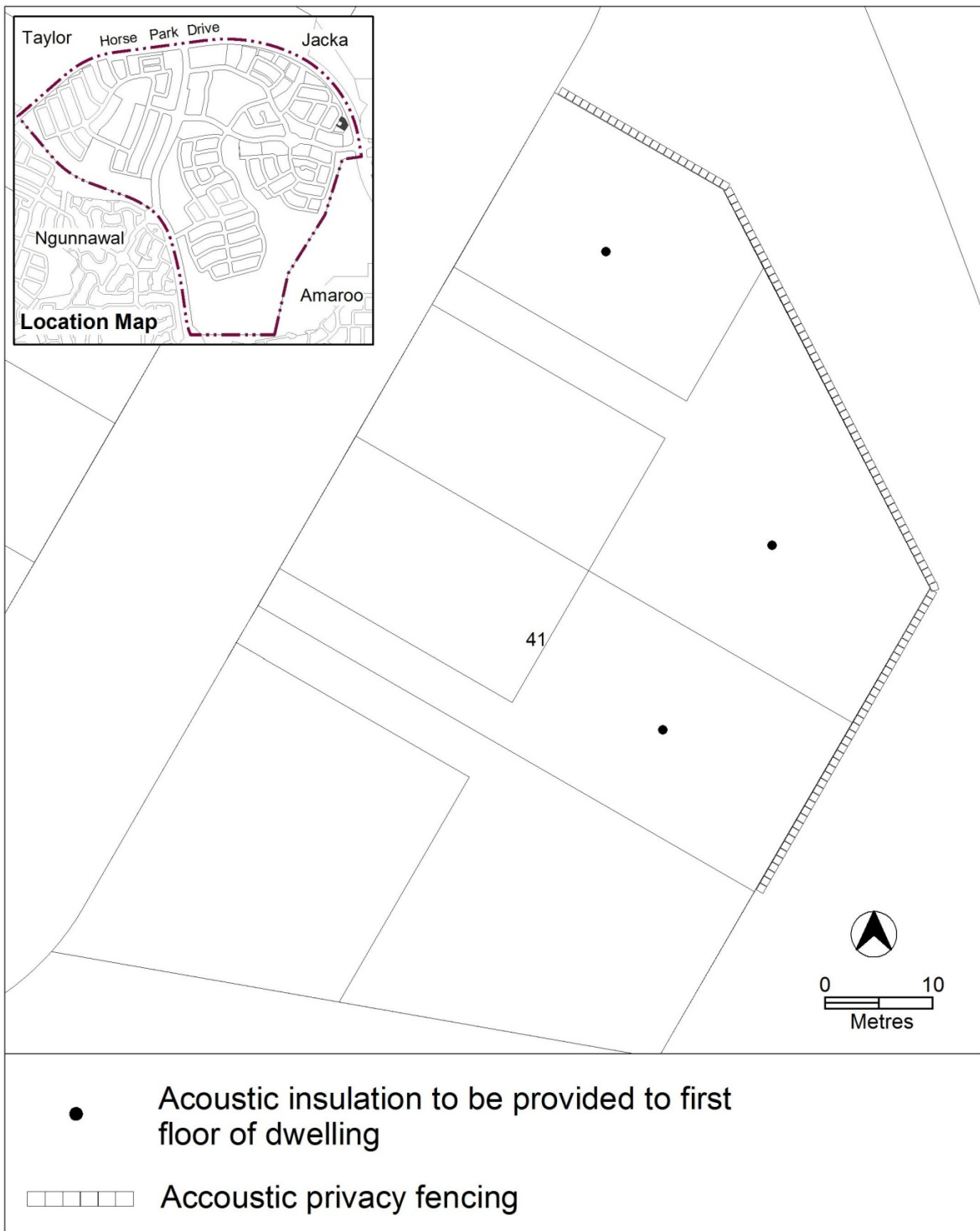


Figure 4 Moncrieff residential area 4

Other ongoing provisions

This part applies to blocks and parcels identified as ongoing provisions (OPn) in the Moncrieff Precinct Map. It should be read in conjunction with the relevant zone development code and related codes.

OP1 – Moncrieff residential area

This part applies to blocks and parcels identified in area OP1 shown on the Moncrieff Precinct Map.

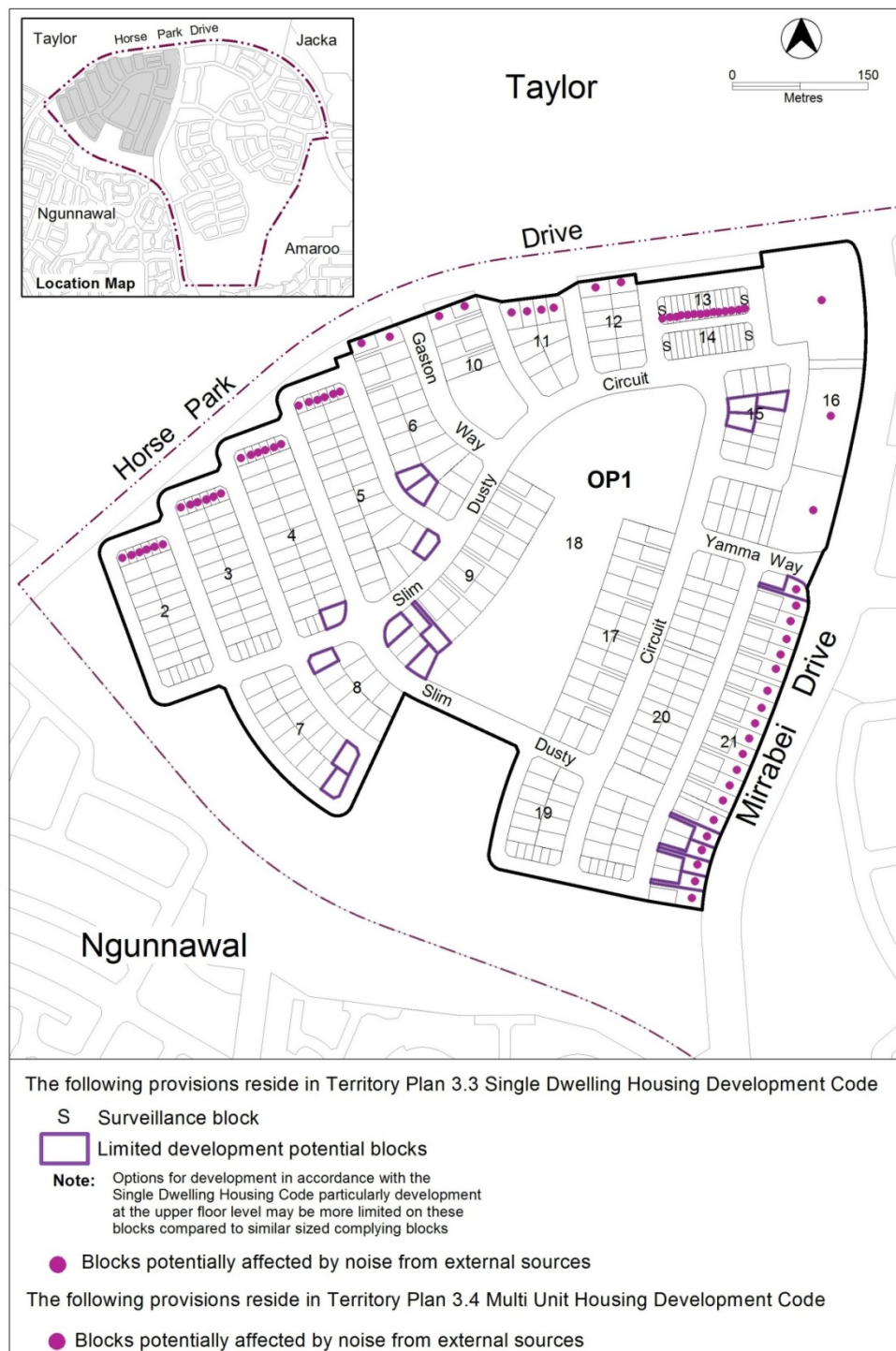


Figure 5 Moncrieff residential area ongoing provisions

OP2 – Moncrieff residential area

This part applies to blocks and parcels identified in area OP2 shown on the Moncrieff Precinct Map.

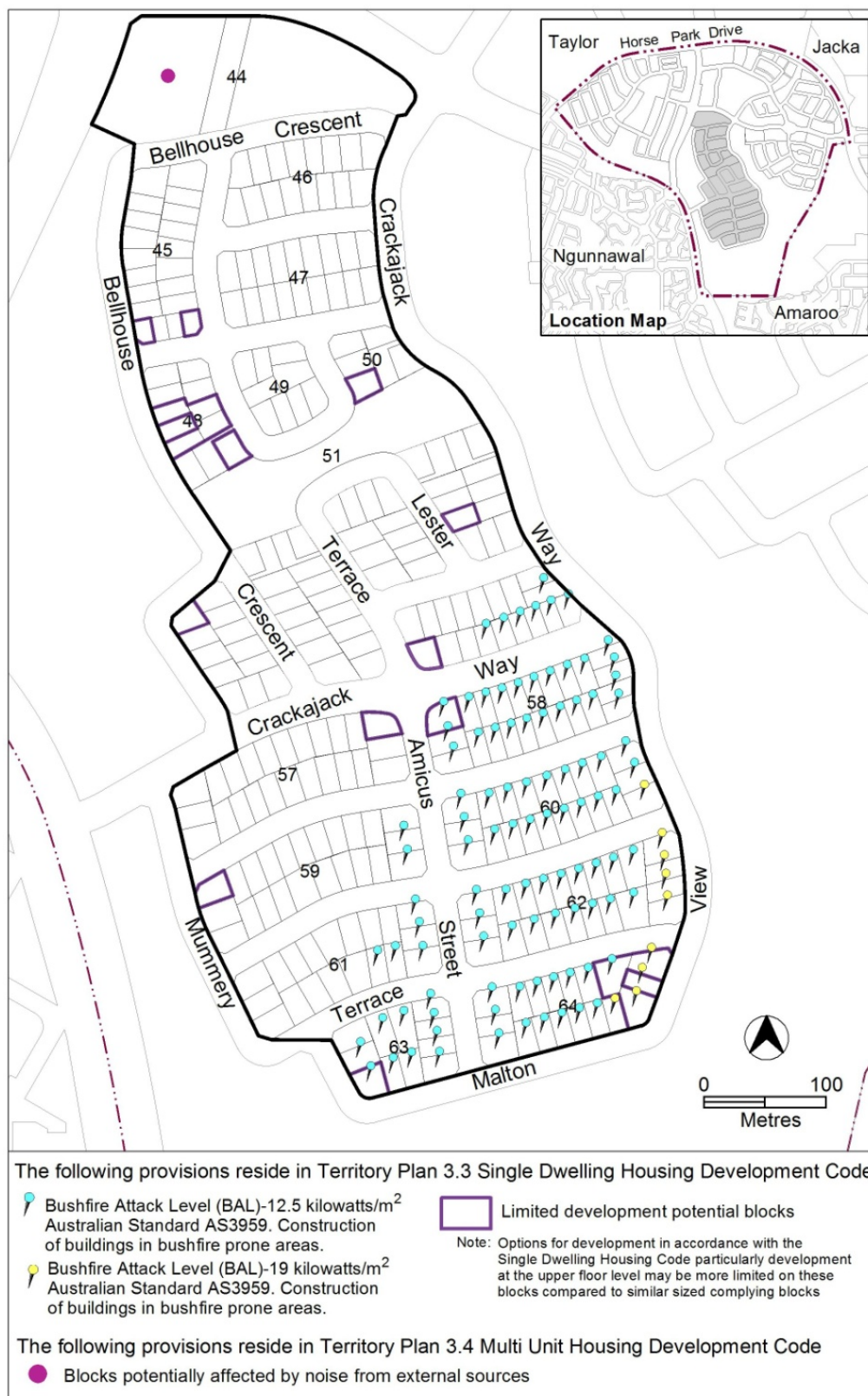


Figure 6 Moncrieff residential area ongoing provisions

OP3 – Moncrieff residential area

This part applies to blocks and parcels identified in area OP3 shown on the Moncrieff Precinct Map.

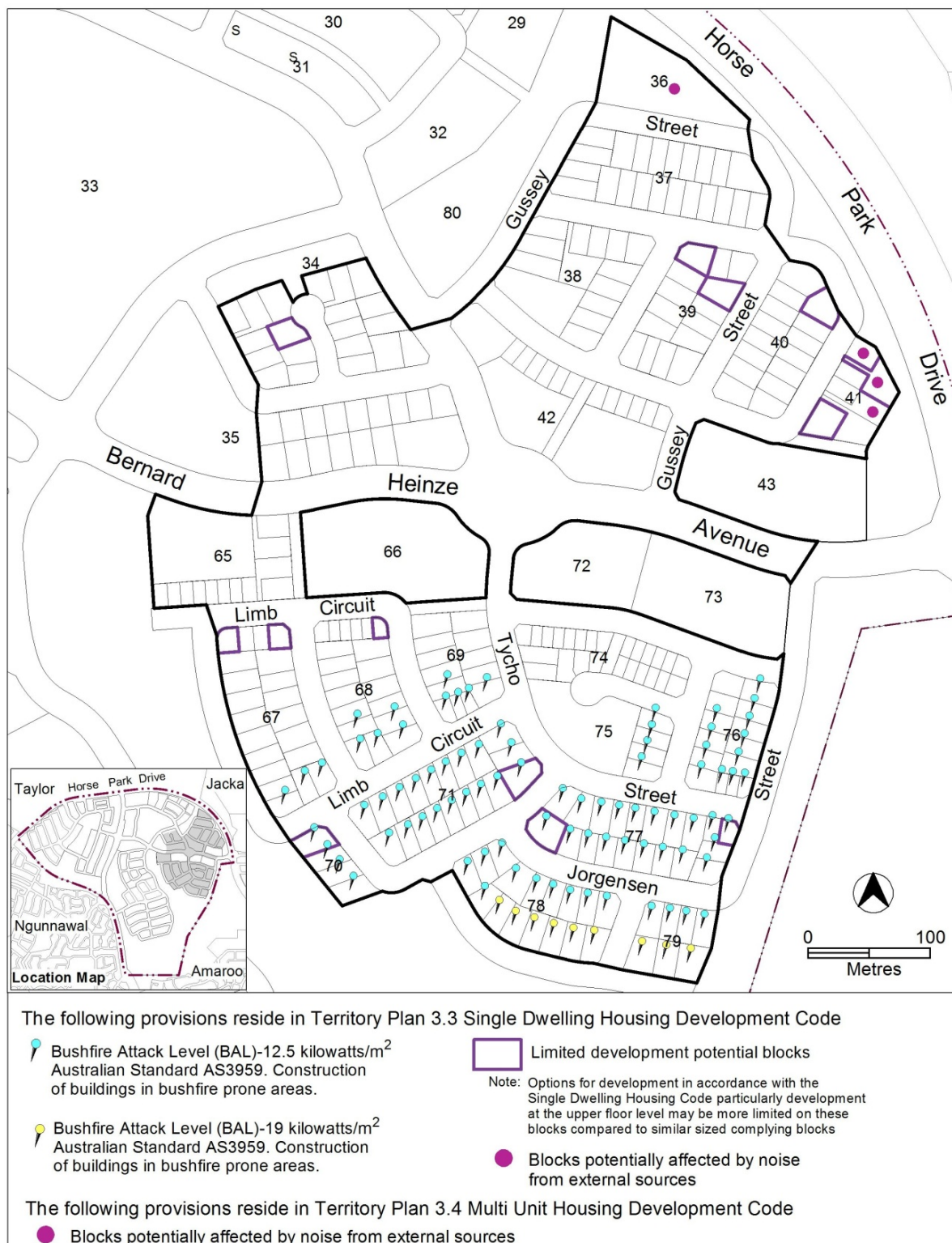


Figure 7 Moncrieff residential area ongoing provisions

OP4 – Moncrieff residential area

This part applies to blocks and parcels identified in area OP4 shown on the Moncrieff Precinct Map.

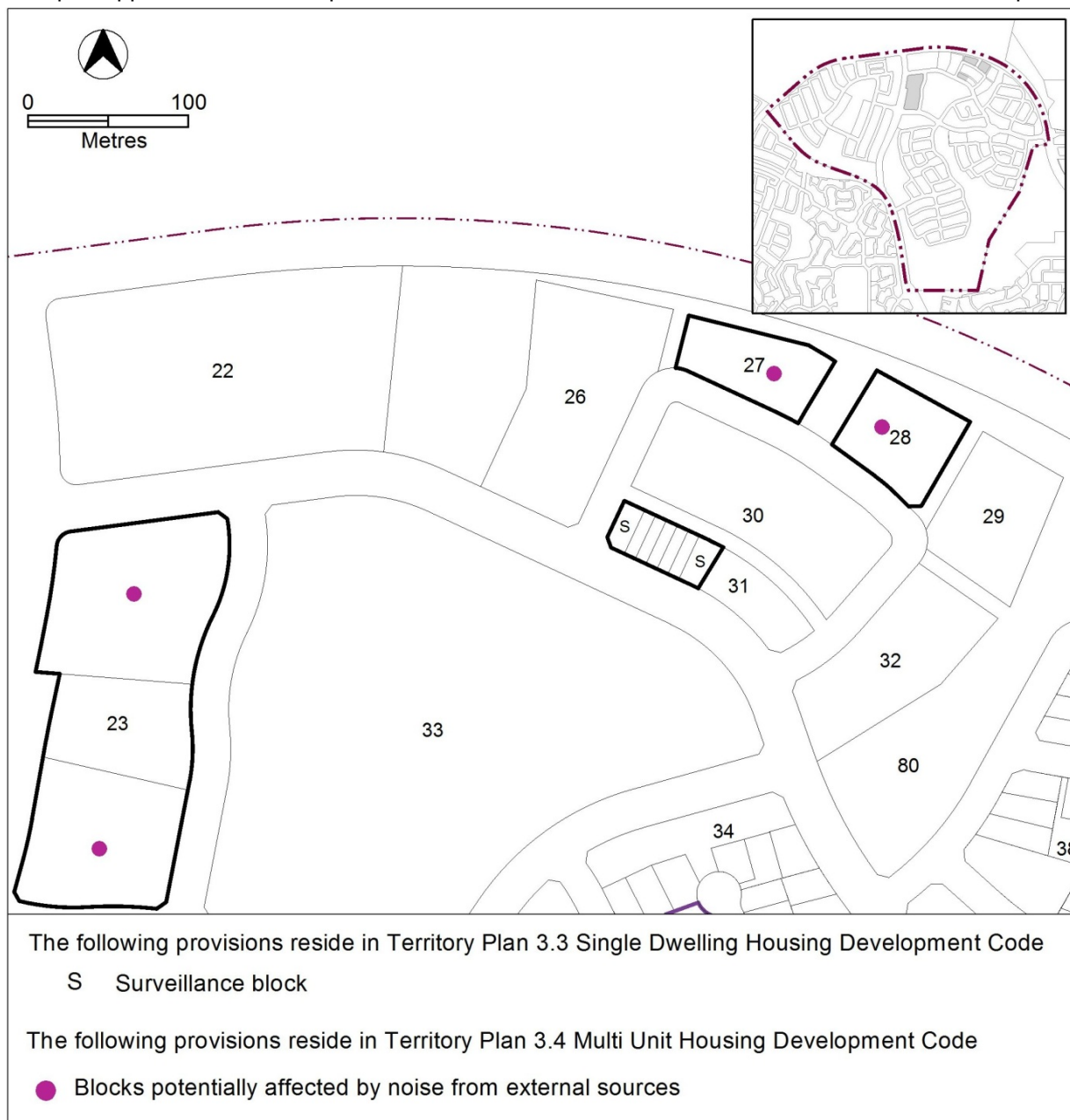


Figure 8 Moncrieff residential area ongoing provisions