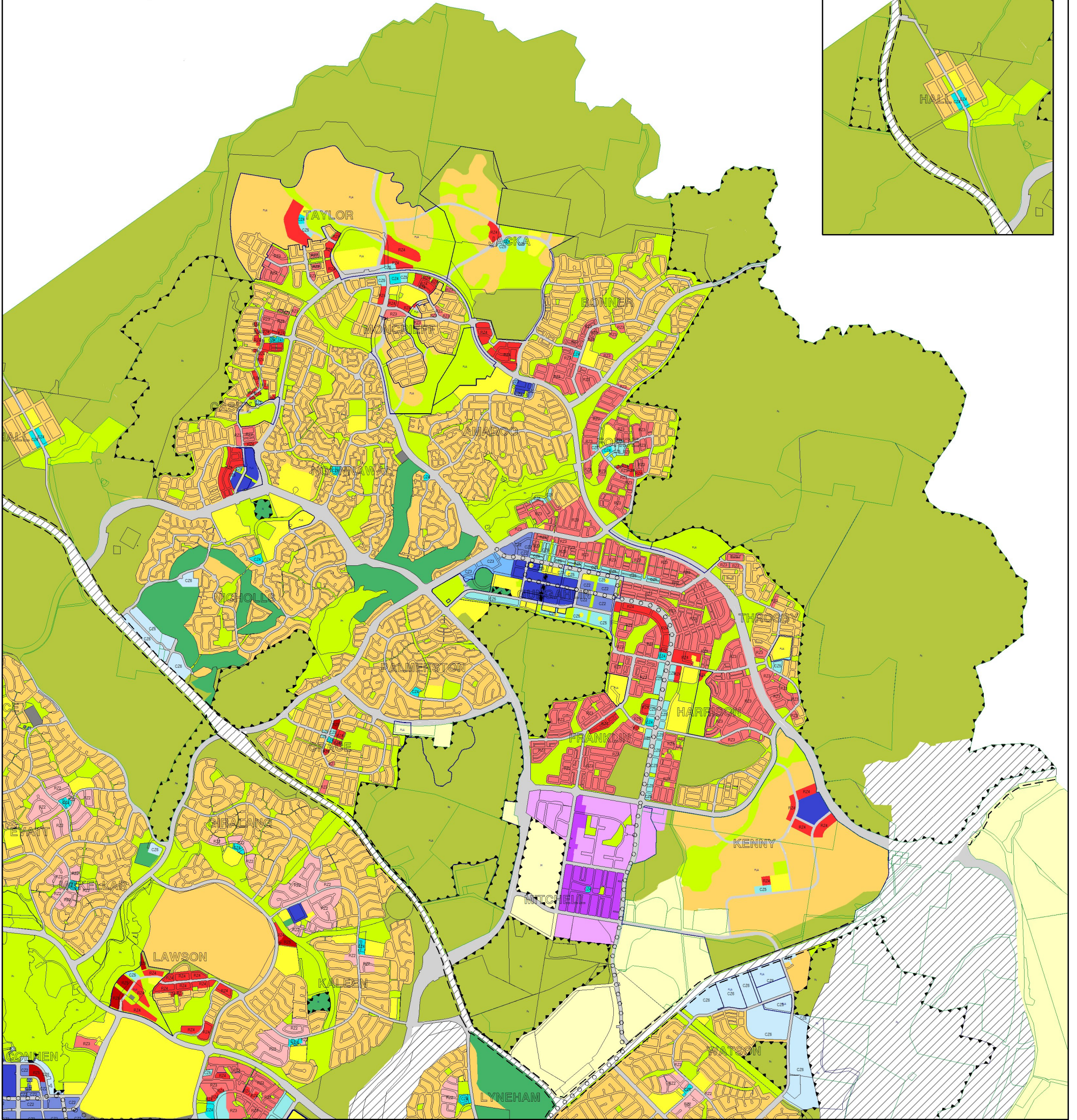




ACT
Government

Environment, Planning and
Sustainable Development

Inset: Hall



Territory Plan Zones and Overlays

(Refer to the Territory Plan at ACT Legislation Register www.legislation.act.gov.au/ni/2008-27/current/default.asp)

Designated Areas:

See National Capital Plan

Residential:

- RZ1 - Suburban
- RZ2 - Suburban Core
- RZ3 - Urban Residential
- RZ4 - Medium Density Residential
- RZ5 - High Density Residential

Commercial:

- CZ1 - Core
- CZ2 - Business
- CZ3 - Services
- CZ4 - Local Centre
- CZ5 - Mixed Use
- CZ6 - Leisure and Accommodation

Industrial:

- IZ1 - General Industrial
- IZ2 - Mixed Use Industrial

Community Facility:

- CFZ - Community Facility

Parks and Recreation:

- PRZ1 - Urban Open Space
- PRZ2 - Restricted Access Recreation

Transport and Services:

- TSZ1 - Transport
- TSZ2 - Services

Non-Urban:

- NUZ1 - Broadacre
- NUZ2 - Rural
- NUZ3 - Hills, Ridges and Buffer
- NUZ4 - River Corridor
- NUZ5 - Mountains and Bushland

S

Special Requirements apply
under National Capital Plan

FUA

Future Urban Area

—

Special Requirements apply flanking
Main Avenues and Approach Routes
(see National Capital Plan)

o o o o

Intertown Public Transport Route

Public Land

arrows point inwards
and encompass the type of public
land reserve listed below
(see also Chapter 10 of the Planning
and Development Act 2007)

Pa-i

Type of Public Land Reserve:
(see also Schedule 3 of the Planning
and Development Act 2007)

- Pa - a wilderness area
- Pb - a national park
- Pc - a nature reserve
- Pd - a special purpose reserve
- Pe - an urban open space
- Pf - a cemetery or burial ground
- Pg - the protection of water supply
- Ph - a lake
- Pi - a sport and recreation reserve

NOTE:
District and Suburb Precinct Maps and Codes are not shown on
this map. Refer to the Territory Plan on the ACT Legislation Register
www.legislation.act.gov.au/ni/2008-27/current/default.asp
section 10 Precinct Maps and Codes.



0 800 m

TERRITORY PLAN MAP Zones and Overlays Gungahlin and Hall

Incorporating amendments to
25 May 2017