



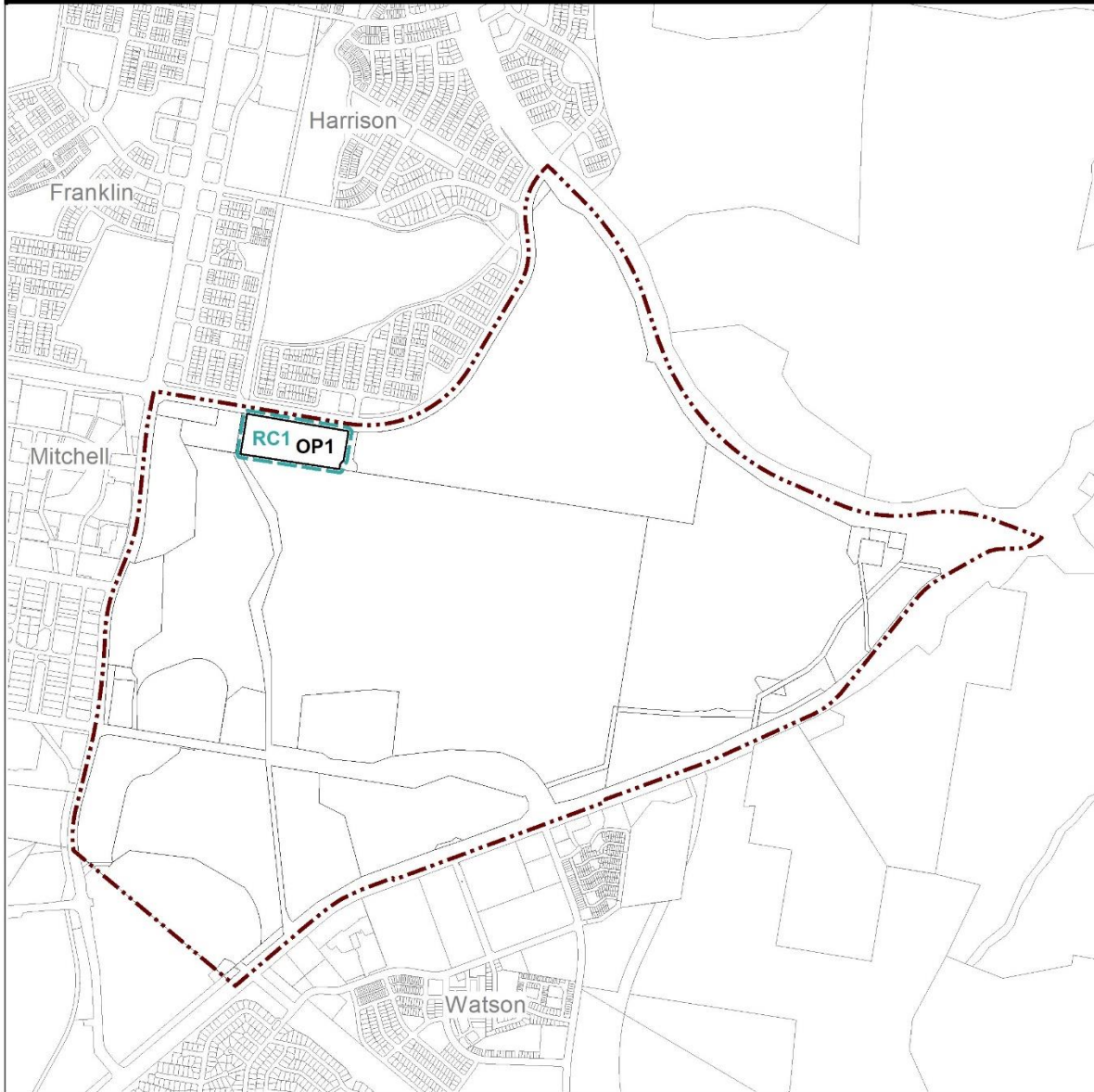
ACT
Government

Environment, Planning and
Sustainable Development

Kenny Precinct Map and Code

This page is intentionally blank.

Kenny Precinct Map



Additional rules and criteria apply see Kenny Precinct Code



Ongoing provisions apply see Kenny Precinct Code



Kenny Precinct Code

Contents

Introduction.....	3
Additional rules and criteria	5
RC1 – Kenny school.....	5
Element 1: Building and site controls.....	5
1.1 On-site stormwater detention.....	5
Other ongoing provisions.....	6
OP1 – Kenny school.....	6

FIGURES

Figure 1 Kenny school.....	5
Figure 2 Kenny school ongoing provisions	6

Introduction

Name

The name of this code is the **Kenny Precinct Code**.

Application

The code applies to the Division of Kenny.

Purpose

This code provides additional planning, design and environmental controls for specific areas or blocks and may also contain references to provisions in other codes.

In conjunction with other relevant codes it will be used by the *Authority* to assess development applications and offer guidance to intending applicants in designing development proposals and preparing development applications.

Structure

This code contains additional rules and/or criteria for particular blocks or parcels identified as areas RCn on the precinct map, to be read in conjunction with the relevant development code. It may also contain sub-parts.

Each element has one or more rules and, unless the respective rule is mandatory, each rule has an associated criterion. Rules provide quantitative, or definitive, controls. By contrast, criteria are chiefly qualitative in nature.

In some instances rules are mandatory. Such rules are accompanied by the words “This is a mandatory requirement. There is no applicable criterion.” Non-compliance with a mandatory rule will result in the refusal of the development application. Conversely, the words “There is no applicable rule” are found where a criterion only is applicable.

Code hierarchy

Under the *Planning and Development Act 2007*, where more than one type of code applies to a development, the order of precedence if there is inconsistency of provisions between codes is: precinct code, development code and general code.

If more than one precinct code applies to the site, the most recent precinct code takes precedence to the extent of any inconsistency.

Definitions

Defined terms, references to legislation and other documents are italicised.

Definitions of terms used in this code are listed in part 13 of the Territory Plan or, for terms applicable only to this code, associated with the respective rule.

Acronyms

EPA	ACT Environment Protection Authority
ESA	ACT Emergency Services Agency
EPSDD	ACT Environment, Planning and Sustainable Development Directorate
NCA	National Capital Authority
P&D Act	Planning and Development Act 2007
TCCS	ACT Transport Canberra and City Services

Additional rules and criteria

This part applies to blocks and parcels identified in the Kenny Precinct Map (RCn). It should be read in conjunction with the relevant zone development code and related codes.

RC1 – Kenny school

This part applies to blocks and parcels identified in area RC1 shown on the Kenny Precinct Map.

Element 1: Building and site controls

Rules	Criteria
1.1 On-site stormwater detention	
<p>R1</p> <p>This rule applies to blocks or parcels identified in Figure 1.</p> <p>Onsite stormwater detention is to be provided in accordance with the rules for on-site stormwater detention in the Water Sensitive Urban Design General Code.</p>	<p>This is a mandatory requirement. There is no applicable criterion.</p>

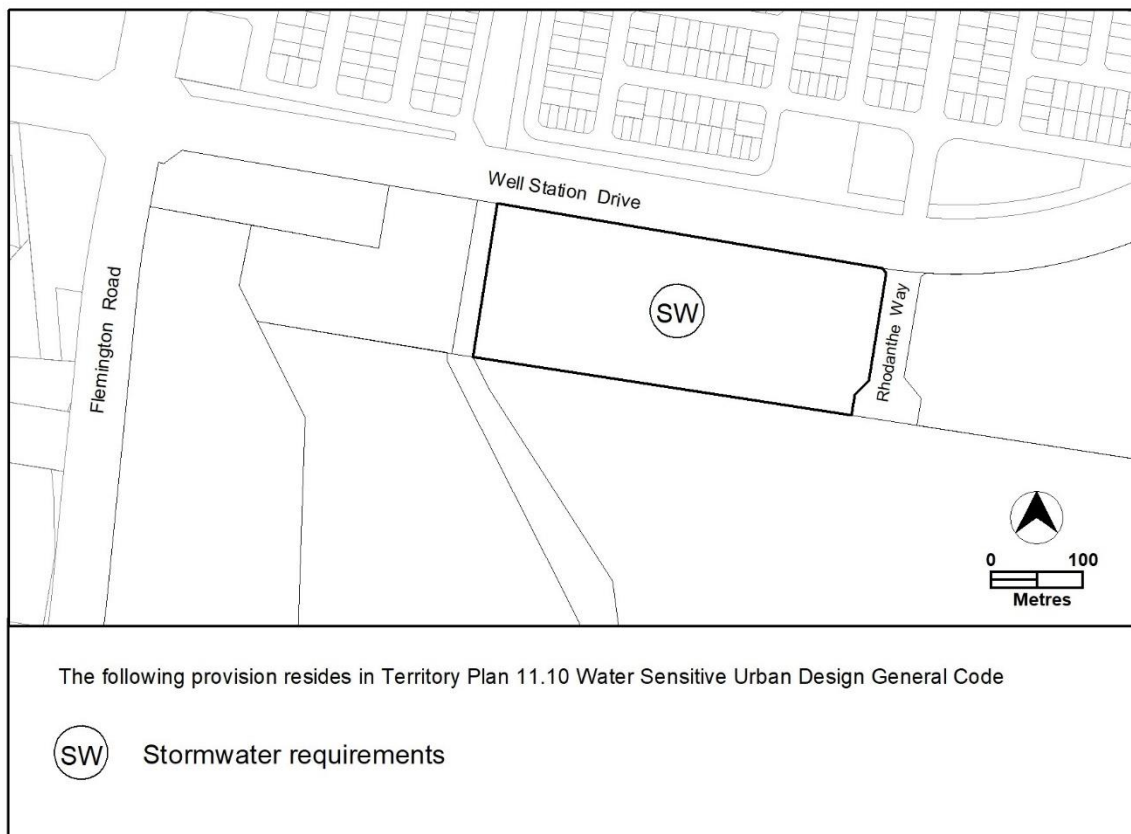


Figure 1 Kenny school

Other ongoing provisions

This part applies to blocks and parcels identified as ongoing provisions (OPn) in the Kenny Precinct Map. It should be read in conjunction with the relevant zone development code and related codes.

OP1 – Kenny school

This part applies to blocks and parcels identified in area OP1 shown on the Kenny Precinct Map.

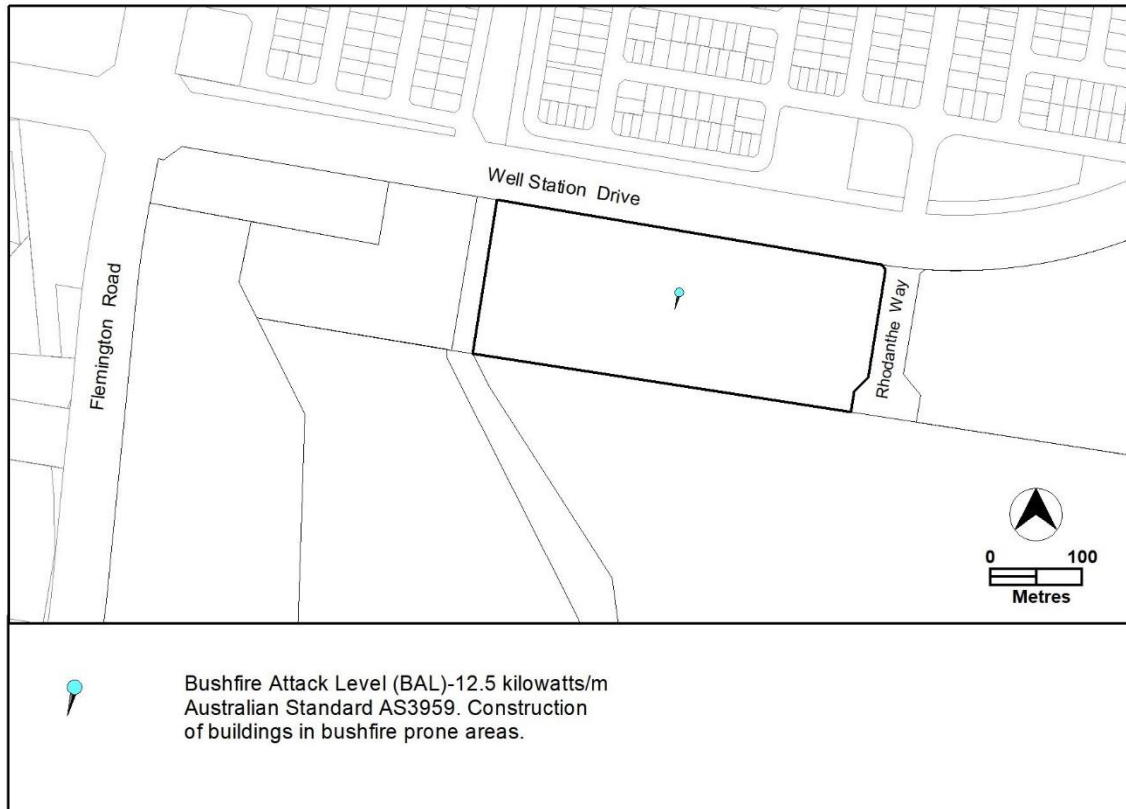


Figure 2 Kenny school ongoing provisions