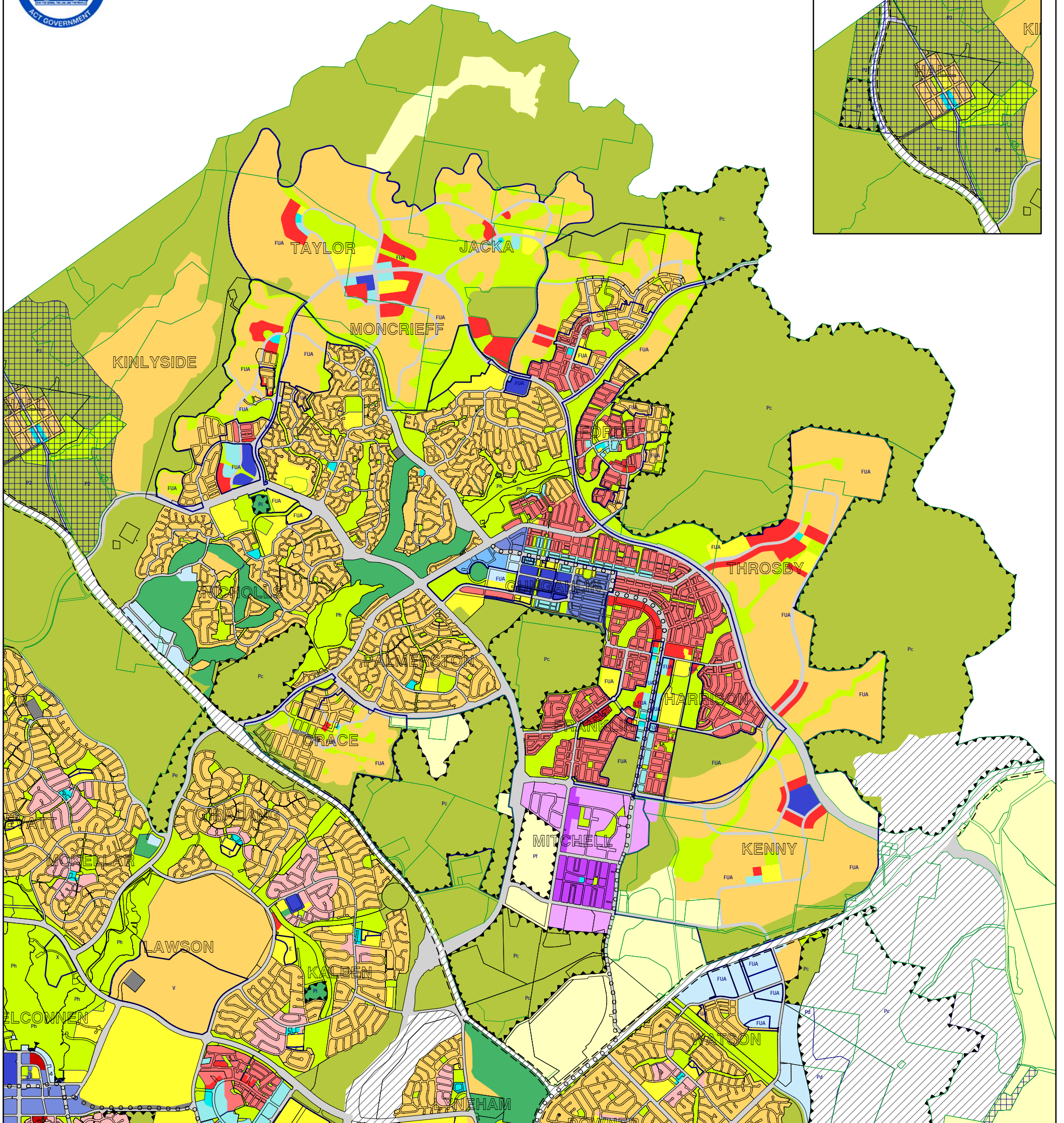
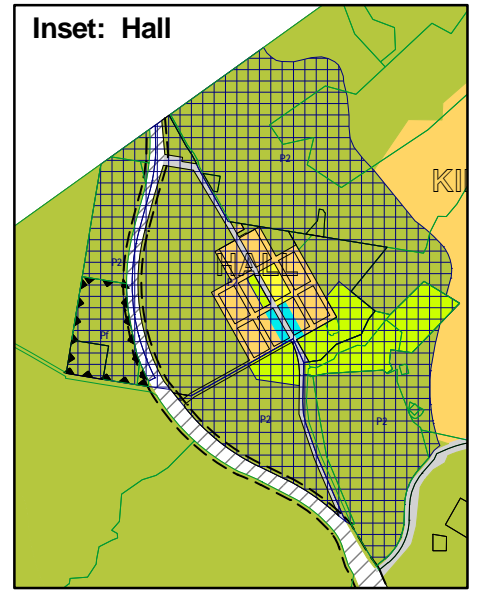




Inset: Hall



ZONES

Designated Areas:

See National Capital Plan

Residential:

- RZ1 - Suburban
- RZ2 - Suburban Core
- RZ3 - Urban Residential
- RZ4 - Medium Density Residential
- RZ5 - High Density Residential

Commercial:

- CZ1 - Core
- CZ2 - Business
- CZ3 - Services
- CZ4 - Local Centre
- CZ5 - Mixed Use
- CZ6 - Leisure and Accommodation

Industrial:

- IZ1 - General Industrial
- IZ2 - Mixed Use Industrial

Community Facility:

- CFZ - Community Facility

Parks and Recreation:

- PRZ1 - Urban Open Space
- PRZ2 - Restricted Access Recreation

Transport and Services:

- TSZ1 - Transport
- TSZ2 - Services

Non-Urban:

- NUZ1 - Broadacre
- NUZ2 - Rural
- NUZ3 - Hills, Ridges and Buffer
- NUZ4 - River Corridor
- NUZ5 - Mountains and Bushland

OVERLAYS

Type of Precinct:

- P1 - Northbourne Avenue
- P2 - Rural Village
- P3 - Inner North
- P4 - Plantation Forestry
- P5 - Clearance Zone
- P6 - Stromlo Forest Park

Public Land, arrows point inwards and encompass the type of public land reserve listed below (see also Chapter 10 of the Planning and Development Act 2007)

Type of Public Land Reserve: (see also Schedule 3 of the Planning and Development Act 2007)

- Pa - a wilderness area
- Pb - a national park
- Pc - a nature reserve
- Pd - a special purpose reserve
- Pe - an urban open space
- Pf - a cemetery or burial ground
- Pg - the protection of water supply
- Ph - a lake
- Pi - a sport and recreation reserve

E

Education
(refer to Community Facility Zone
Development Code)

S

Special Requirements apply
under National Capital Plan

FUA

Future Urban Area

V

Draft Variation to the Plan
having interim effect

X

Urban Open Space - Not Public Land

Special Requirements apply flanking
Main Avenues and Approach Routes
(see National Capital Plan)

o o o o o

Intertown Public Transport Route

0 800 m



TERRITORY PLAN MAP Gungahlin and Hall

Incorporating amendments
to: 30 July 2010