

NUZ1 – Broadacre Zone

Zone Objectives

- a) Make provision in a predominantly rural landscape setting for a range of uses which require larger sites and/or a location outside urban areas
- b) Make provision for activities requiring clearance zones or protection from conflicting development
- c) Ensure that development does not adversely impact or visually intrude on the landscape and environmental quality of the locality
- d) Ensure, where appropriate, that development and the use of land does not undermine the future use of land which may be required for urban and other purposes

NUZ1 – Broadacre Zone Development Table

EXEMPT DEVELOPMENT	
Development approval not required, may need building approval On leased land, development must be authorised by a lease.	
Exempt Development identified in Section 20 and Schedule 1 of the <i>Planning and Development Regulation 2008</i> .	

ASSESSABLE DEVELOPMENT	
Development application required On leased land, development must be authorised by a lease.	
MINIMUM ASSESSMENT TRACK CODE	
Development application required and assessed in the Code Track	
Development	Code
No development identified.	

MINIMUM ASSESSMENT TRACK MERIT	
Development application required and assessed in the Merit Track, unless specified in Schedule 4 of the Planning and Development Act 2007 (as Impact Track) or listed as prohibited in the Site Specific section below	
Development	Code
Agriculture	Non-Urban Zones Development Code
Ancillary use	
Animal care facility	
Animal husbandry	
Caravan park/camping ground	
Cemetery	
Communications facility	
Community activity centre	
Consolidation	
Defence installation	
Demolition	
Educational establishment	
Emergency services facility	
Farm Tourism	
Health facility	
Land management facility	
MAJOR UTILITY INSTALLATION	
Minor use	
Municipal depot	
Nature conservation area	
Outdoor recreation facility	
Parkland	
Place of worship	
Residential care accommodation	
Road	
Scientific research establishment	
Service station	
Sign	
Subdivision	
Temporary use	
Tourist facility	
Transport depot	
Veterinary hospital	

Woodlot		
Specific areas have additional developments that may be approved subject to assessment. These areas and the additional developments are listed below		
Site Identifier	Additional Development	Code
Deakin Section 65 Block 1 and 3 (Figure 1)	Australian Mint	Non-Urban Zones Development Code
Jerrabomberra Blocks 182, 2100, 2099, 2000 and 2101 (Figure 2)	Car park	
	Freight transport facility	
	General industry	
	Hazardous industry	
	Hazardous waste facility	
	Incineration facility	
	Light industry	
	Offensive industry	
	Recycling facility	
	Recyclable materials collection	
	Store	
	Warehouse	
	Waste transfer station	
Jerrabomberra Block 2031 (Figure 3)	Mining industry	
Jerrabomerra Block 2114 (Figure 4)	Land fill site	
	Recycling facility	
	Recyclable materials collection	
	Waste transfer station	
Lyneham and District of Gungahlin (Figure 5)	Place of assembly	
Pialligo Area 'a' (Figure 6)	Bulk landscape supplies	
	Retail plant nursery	
Pialligo Area 'b' (Figure 6)	Produce market	
Pialligo Sections 23, 24, 25 & 26 (Figure 3)	Mining Industry	
Symonston Area 'a' (Figure 7)	Cultural facility	
Symonston Area 'b' (Figure 7)	Mobile home park	
MINIMUM ASSESSMENT TRACK IMPACT		
Development application required and assessed in the Impact Track.		
Development	Code	
Corrections facility	Non-Urban Zones Development Code	
1. A development that is not an Exempt, Code Track or Merit Track development where the development is allowed under an existing lease, (see section 134 of the Planning and Development Act 2007).		
2. A development that would be permissible under the National Capital Plan but which is identified as prohibited development in this Table.		
3. Development specified in Schedule 4 of the Planning and Development Act 2007 and not listed as prohibited development in this Table.		
4. Development declared under Section 123 and Section 124 of the Planning and Development Act 2007 and not listed as prohibited development in this Table.		
5. Any development not listed in this Table.		

PROHIBITED DEVELOPMENT

A development application can not be made

Development listed below is prohibited development except where it is listed elsewhere in the Development Table.

Airport Aquatic recreation facility Boarding house Bulk landscape supplies Business agency Caretakers residence Car park Child care centre Civic administration Club Community theatre Commercial accommodation unit Craft workshop Cultural facility Drink establishment Drive-in cinema Financial establishment Freight transport facility Funeral parlour General industry Group or organized camp Guest house Habitable suite Hazardous industry Hazardous waste facility Home business Hospital Hotel Incineration facility Indoor entertainment facility Indoor recreation facility Industrial trades Land fill site	Liquid fuel depot Light industry Mining industry Mobile home park Motel Multi-unit housing Offensive industry Office Overnight camping area Pedestrian plaza Place of assembly Plant and equipment hire establishment Plantation forestry Produce market Public agency Public transport facility Railway use Recyclable materials collection Recycling facility Religious associated use Relocatable unit Restaurant Sand and gravel extraction SHOP Stock/sale yard Store Supportive housing Tourist resort Vehicle sales Warehouse Waste transfer station Zoological facility
--	--

Specific areas have developments that are prohibited in those areas. These areas and the additional developments are listed below

Site Identifier	Development
Jerrabomberra Blocks 2223, 2100, 2099, 2000 and 2101 (Figure 2)	Agriculture
	Animal care facility
	Animal husbandry
	Caravan park/camping ground
	Cemetery
	Community activity centre
	Corrections facility
	Educational establishment
	Farm tourism
	Health facility
	Land management facility
	Municipal depot
	Nature conservation area
	Outdoor recreation facility
Place of worship	

	Scientific research establishment
	Residential care accomodation
	Tourist facility
Jerrabomberra Blocks 182, 2100, 2099, 2000 and 2101 (Figure 2)	Transport depot
	Veterinary hospital
	Woodlot
Pialligo Areas 'a' and 'b' (Figure 6)	Caravan park/camping ground
	Cemetery
	Communications facility
	Community activity centre
	Corrections facility
	Defence installation
	Educational establishment
	Emergency services facility
	Health facility
	Land management facility
	MAJOR UTILITY INSTALLATION
	Municipal depot
	Place of worship
	Residential care accommodation
	Scientific research establishment
	Supportive housing
	Tourist facility
	Transport depot
	Woodlot
Pialligo Area 'b' (Figure 6)	Animal care facility
	Animal husbandry
	Veterinary hospital
Symonston Area 'a' (Figure 7)	Animal care facility
	Caravan park/camping ground
	Cemetery
	Communications facility
	Community activity centre
	Corrections facility
	Defence installation
	Emergency services facility
	Health facility
	Land management facility
	MAJOR UTILITY INSTALLATION
	Municipal depot
	Place of worship
	Residential care accommodation
	Scientific research establishment
	Supportive housing
	Tourist facility
	Transport depot
	Veterinary hospital
	Woodlot

OTHER CODES

PRECINCT CODES

Where a proposal is within an area covered by one of the following Precinct Codes, that Code applies in addition to any specified Development Code:

No Codes identified

GENERAL CODES	
The following General Codes may be called up by Development Codes as relevant considerations in assessing a Development Application:	
Access and Mobility	Parking and Vehicular Access
Bicycle Parking	Planning for Bushfire Risk Mitigation
Communications Facilities and Associated Infrastructure	Signs
Community and Recreation Facilities Location	Water Sensitive Urban Design
Crime Prevention Through Environmental Design	Water Use and Catchment

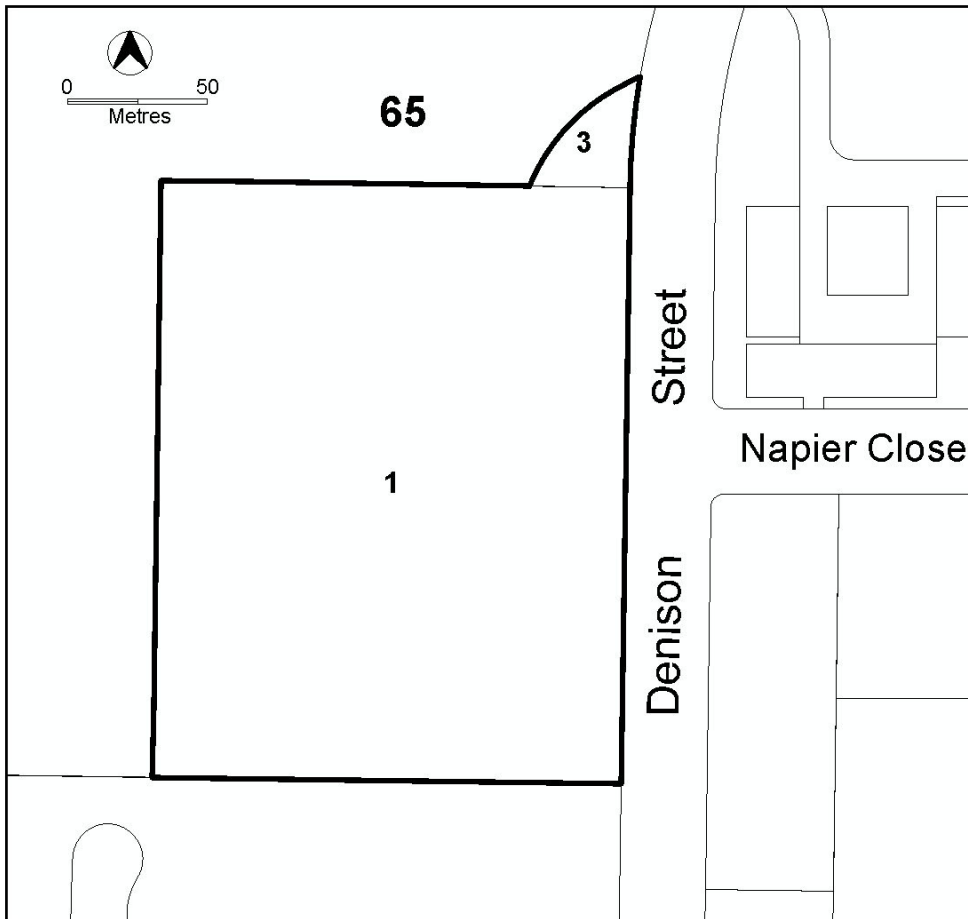


Figure 1 Australian Mint, Deakin

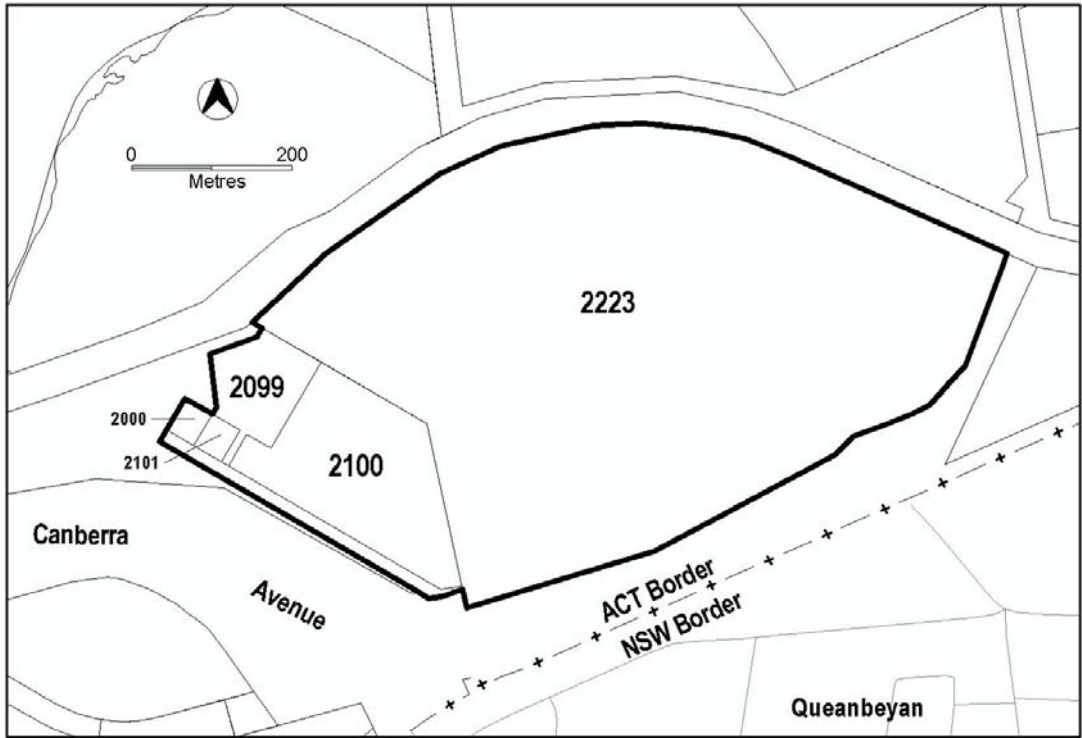


Figure 2 Harman Industrial Area, Jerrabomberra

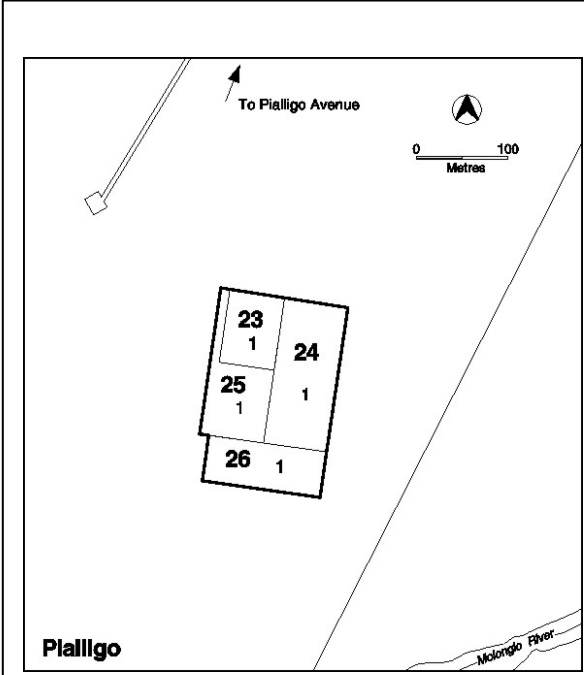
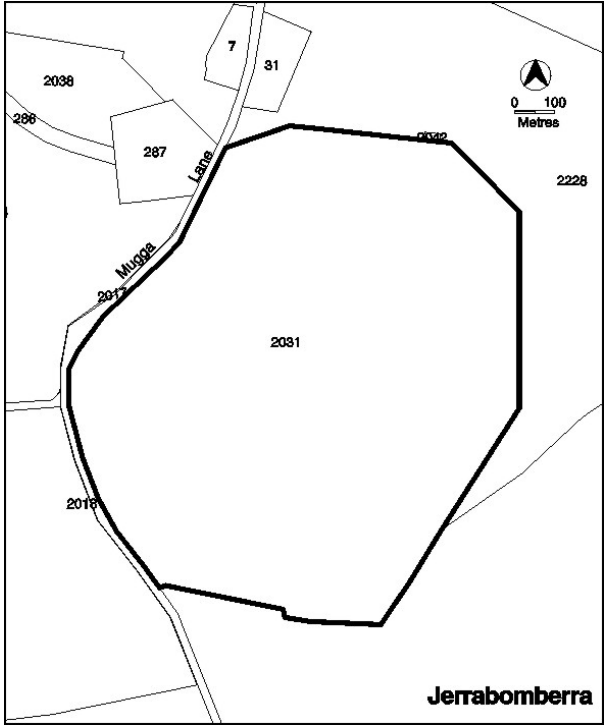


Figure 3 Mining



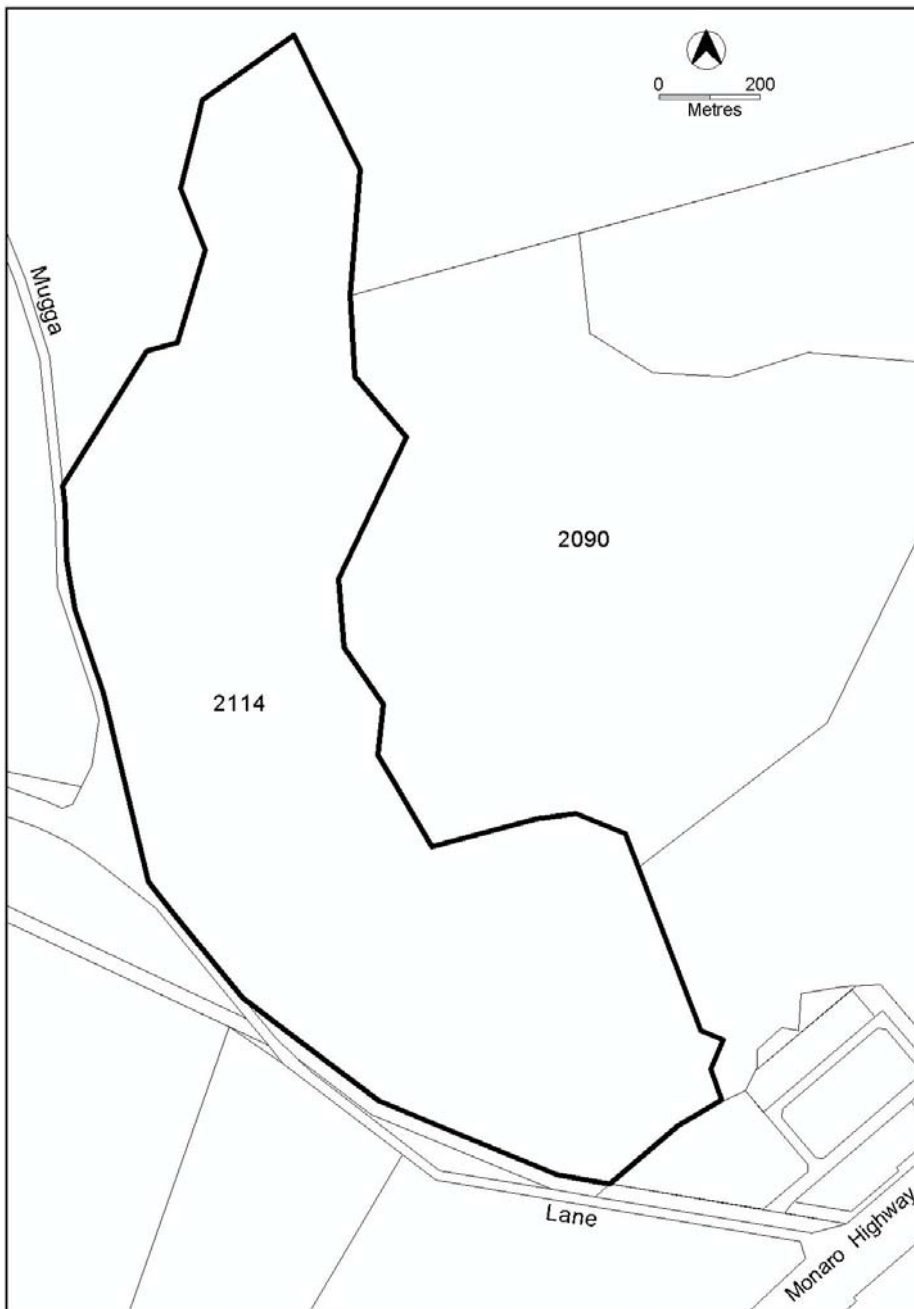


Figure 4 Mugga Lane Landfill, Jerrabomberra

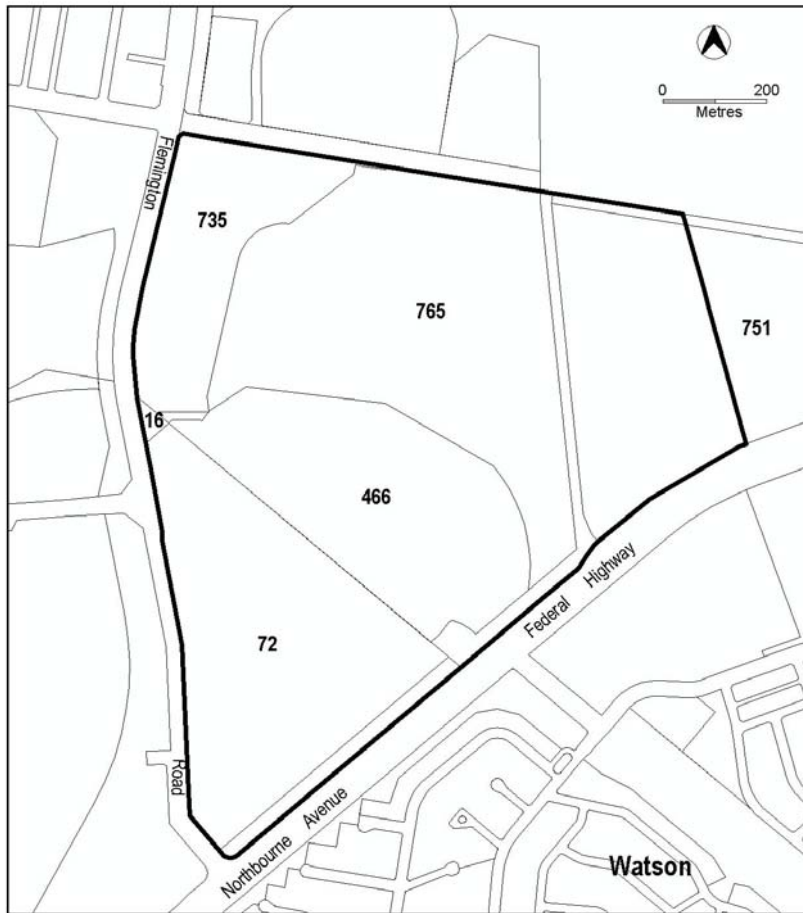
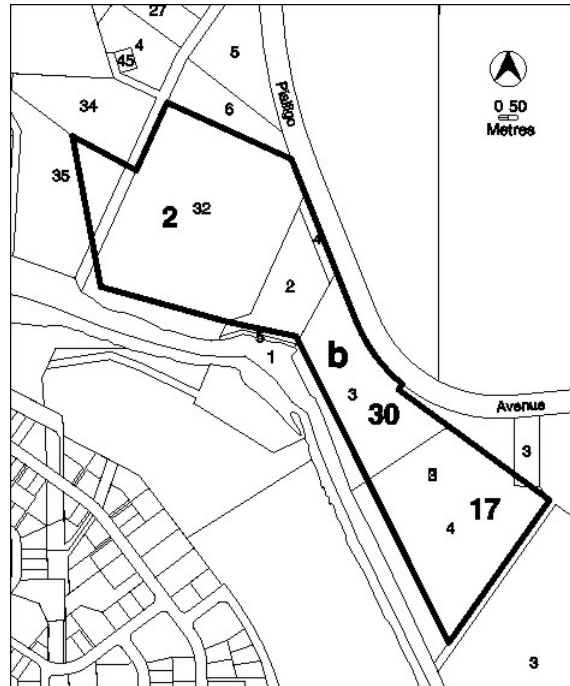
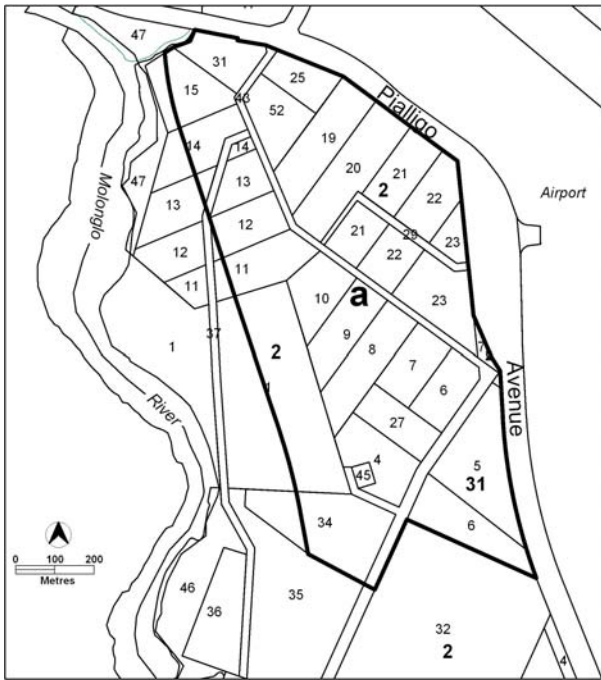


Figure 5 Lyneham and District of Gungahlin

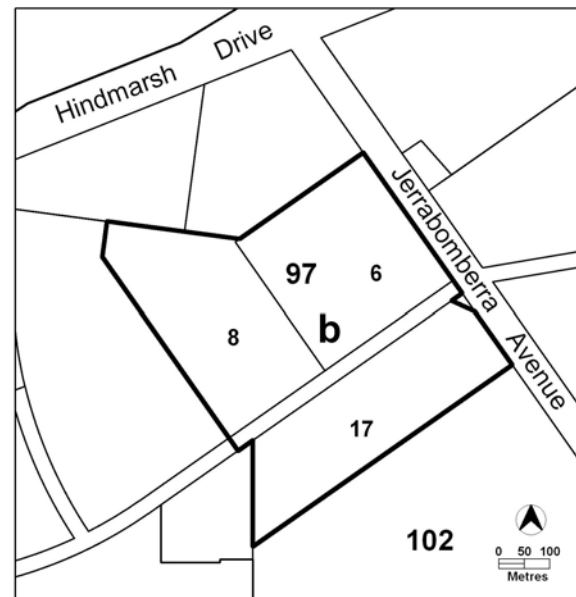
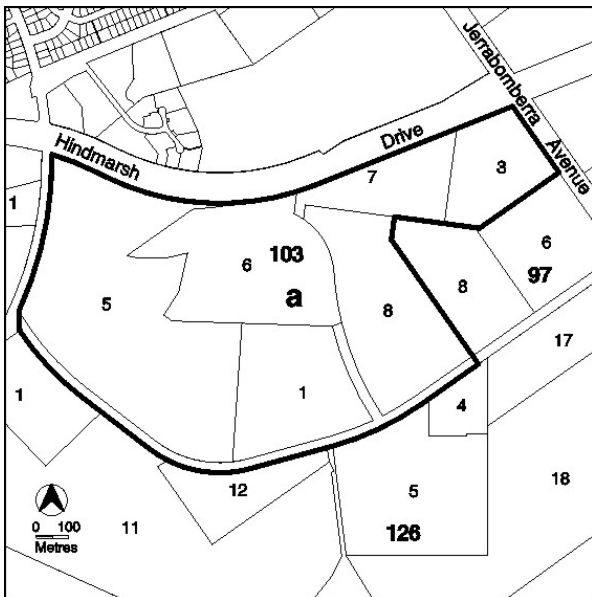
Figure 6



Pialligo 'a'

Pialligo 'b'

Figure 7



Symonston 'a'

Symonston 'b'