



**ACT**

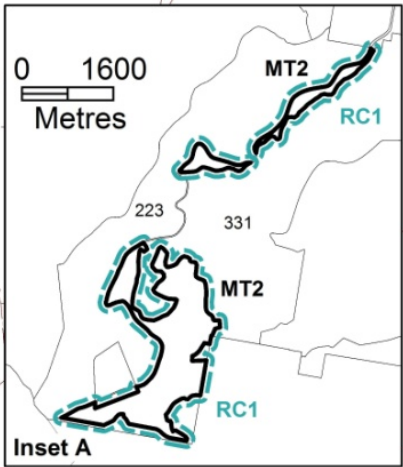
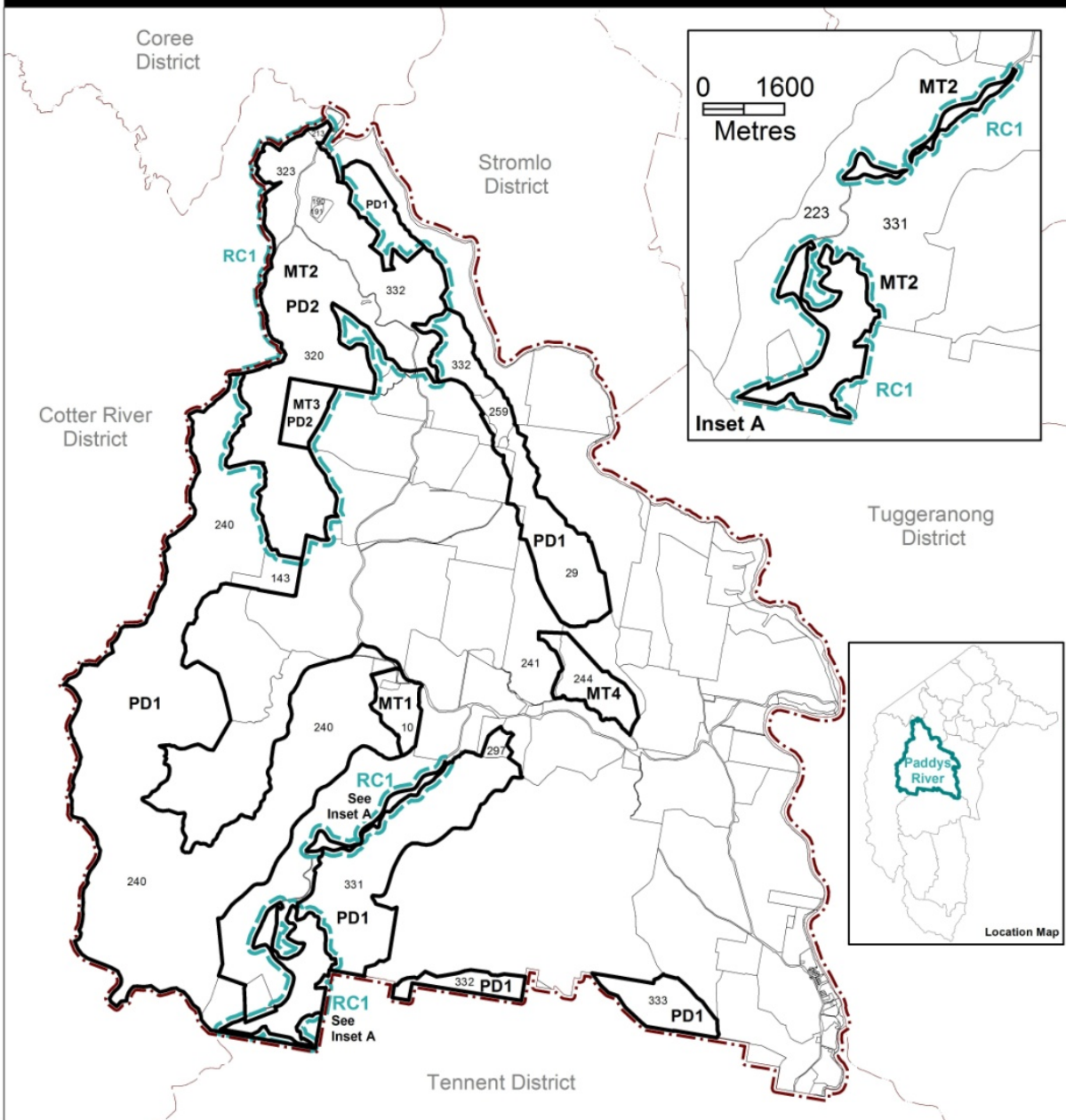
Government

Environment and  
Sustainable Development

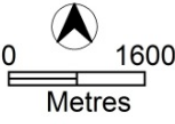
# Paddys River District Precinct Map and Code

*This page is intentionally blank.*

# Paddys River District Precinct Map



- PD<sub>n</sub>** Additional prohibited development applies see Table 1
- MT<sub>n</sub>** Additional merit track development applies see Table 2
- RC<sub>n</sub>** Additional rules and criteria apply see Paddys River Precinct Code



**Note:** Rural block boundaries and numbers are for information only and may change overtime.

# Assessment Tracks

The following tables identify the additional prohibited development and additional merit track development for blocks and parcels shown in the Paddys River District Precinct Map (identified as PDn or MTn). Development that is exempt from requiring development approval, other prohibited development and the minimum assessment track applicable to each development proposal is set out in the relevant zone development table.

The following tables constitute part of the relevant zone development table.

**Table 1 – Additional prohibited development**

Additional prohibited development		
Suburb precinct map label	Zone	Development
PD1	NUZ5	<i>agriculture</i>
PD2	NUZ2	<i>stock/sale yard</i>

**Table 2 – Additional merit track development**

Additional merit track development that may be approved subject to assessment		
Suburb precinct map label	Zone	Development
MT1	NUZ5	<i>educational establishment</i>
MT2	NUZ5	<i>outdoor recreation facility plantation forestry</i>
MT3	NUZ2	<i>plantation forestry scientific research establishment tourist facility</i>
MT4	NUZ3	<i>overnight camping plantation forestry tourist facility</i>

# Paddy's River District Precinct Code

## Contents

Introduction.....	4
Additional rules and criteria .....	6
RC1 – Plantation Forestry.....	6
Element 1: Use .....	6
1.1 Agriculture .....	6
1.2 Tourist facility .....	6

# Introduction

## Name

The name of this code is **Paddy's River District Precinct Code**.

## Application

The code applies to the District of Paddy's River excluding land or blocks shown separately in Division Precinct Maps.

## Purpose

This code provides additional planning, design and environmental controls for specific areas or blocks and may also contain references to provisions in other codes.

In conjunction with other relevant codes it will be used by the *Authority* to assess development applications and offer guidance to intending applicants in designing development proposals and preparing development applications.

## Structure

This code contains additional rules and/or criteria for particular blocks or parcels identified as areas RCn on the precinct map, to be read in conjunction with the relevant development code. It may also contain sub-parts.

Each element has one or more rules and, unless the respective rule is mandatory, each rule has an associated criterion. Rules provide quantitative, or definitive, controls. By contrast, criteria are chiefly qualitative in nature.

In some instances rules are mandatory. Such rules are accompanied by the words "This is a mandatory requirement. There is no applicable criterion." Non-compliance with a mandatory rule will result in the refusal of the development application. Conversely, the words "There is no applicable rule" is found where a criterion only is applicable.

## Code hierarchy

Under the *Planning and Development Act 2007*, where more than one type of code applies to a development, the order of precedence if there is inconsistency of provisions between codes is: precinct code, development code and general code.

If more than one precinct code applies to the site, the most recent precinct code takes precedence to the extent of any inconsistency.

## Definitions

Defined terms, references to legislation and other documents are italicised.

Definitions of terms used in this code are listed in part 13 of the Territory Plan or, for terms applicable only to this code, associated with the respective rule.

**Acronyms**

ACTPLA	Planning and Land Authority within the ACT Environment and Sustainable Development Directorate
EPA	ACT Environment Protection Authority
ESA	ACT Emergency Services Agency
ESDD	ACT Environment and Sustainable Development Directorate
NCA	National Capital Authority
P&D Act	Planning and Development Act 2007
TAMS	ACT Territory and Municipal Services Directorate

## Additional rules and criteria

This part applies to blocks and parcels identified in the Paddy's River District Precinct Map (RCn). It should be read in conjunction with the relevant zone development code and related codes.

### RC1 – Plantation Forestry

This part applies to blocks and parcels identified in area RC1 shown on the Paddy's River District Precinct Map.

#### Element 1: Use

Rules	Criteria
<b>1.1 Agriculture</b>	
There is no applicable rule.	C1 Agriculture is limited to livestock grazing excluding horse agistment where appropriate.
<b>1.2 Tourist facility</b>	
There is no applicable rule.	C2 For tourist facilities, buildings are low rise with emphasis on integration of the development into the landscape and compatibility with related environmentally sensitive areas. Buildings comprise lodge style and self-contained cabins.