

Australian Capital Territory

Public Roads (Parkes & Russell) Closure 2008 (No 1)

R06/08

Notifiable instrument NI2008-75

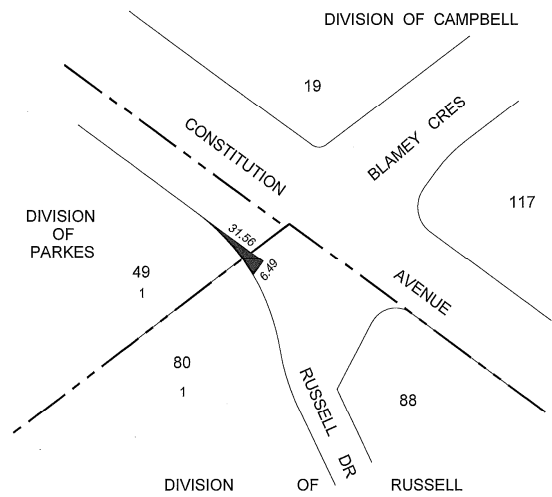
made under the

Public Roads Act 1902, section 20 (Closing of roads).

I close the segment of road reserve adjacent to Block 1 Section 49 in the Division of Parkes and Block 1 Section 80 in the Division of Russell, in the District of Canberra Central, at the intersection of Constitution Avenue and Russell Drive, as identified on the plan annexed hereto.

Bill Hirst
Chief Surveyor
Delegate of the Minister

4 March 2008



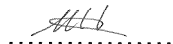
Note: Dimensions are in metres

— ROAD CLOSURE

DIVISIONS OF PARKES & RUSSELL

This is the plan annexed to Public Roads (Parkes & Russell) Closure

2008 (No 1) signed this 4TH day of March 2008.


.....
Delegate's Initials