

# Planning and Development (Technical Amendment—Macgregor) Plan Variation 2013 (No 1)\*

**Notifiable Instrument NI2013—576**

**Technical Amendment No 2013—21**

made under the

***Planning and Development Act 2007*, section 89 (Making technical amendments) s96 (land ceases to be in future urban area)**

---

This plan variation commences on the day after it is notified.

Variation No 2013—21 to the Territory Plan has been approved by the Planning and Land Authority.

## **Variation to the Territory Plan**

The Territory Plan map is varied as indicated in **Annexure A** to identify the zones that apply to the land ceasing to be in a future urban area.

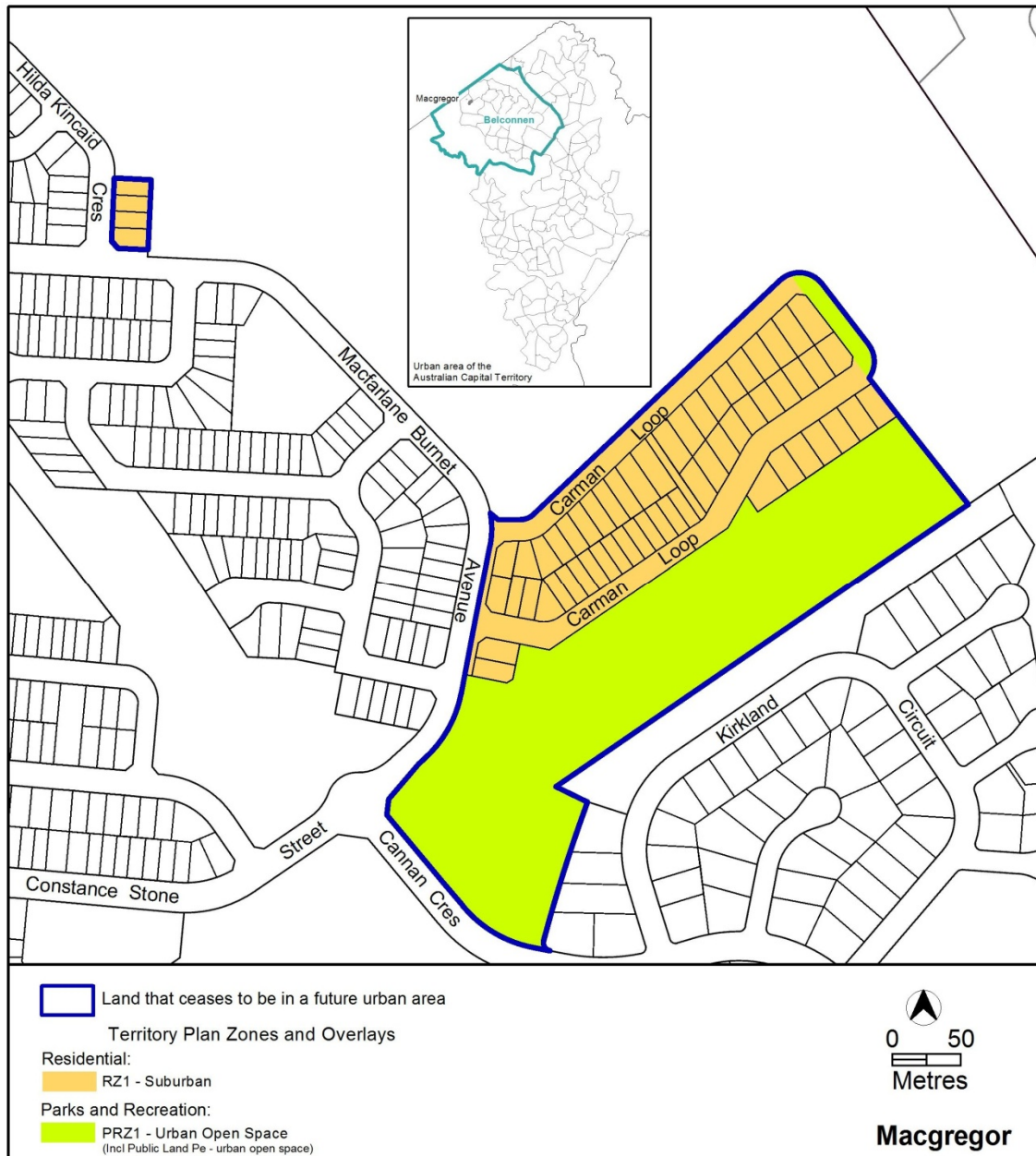
## **Variation to the Precinct Map and Code**

*Replace* Macgregor Precinct Map and Code with **Annexure B** to incorporate ongoing block specific provisions for the area.

Jim Corrigan  
Delegate of the Planning and Land Authority  
09 December 2013

\*Name amended under Legislation Act, s 60

**THIS IS PAGE ONE OF ANNEXURE A  
TO NOTIFIABLE INSTRUMENT NI2013-576**



Jim Corrigan  
Delegate of the Planning and Land Authority  
09 December 2013

**THIS IS ANNEXURE B  
TO NOTIFIABLE INSTRUMENT NI2013–576**

Jim Corrigan  
Delegate of the Planning and Land Authority  
09 December 2013



**ACT**  
Government

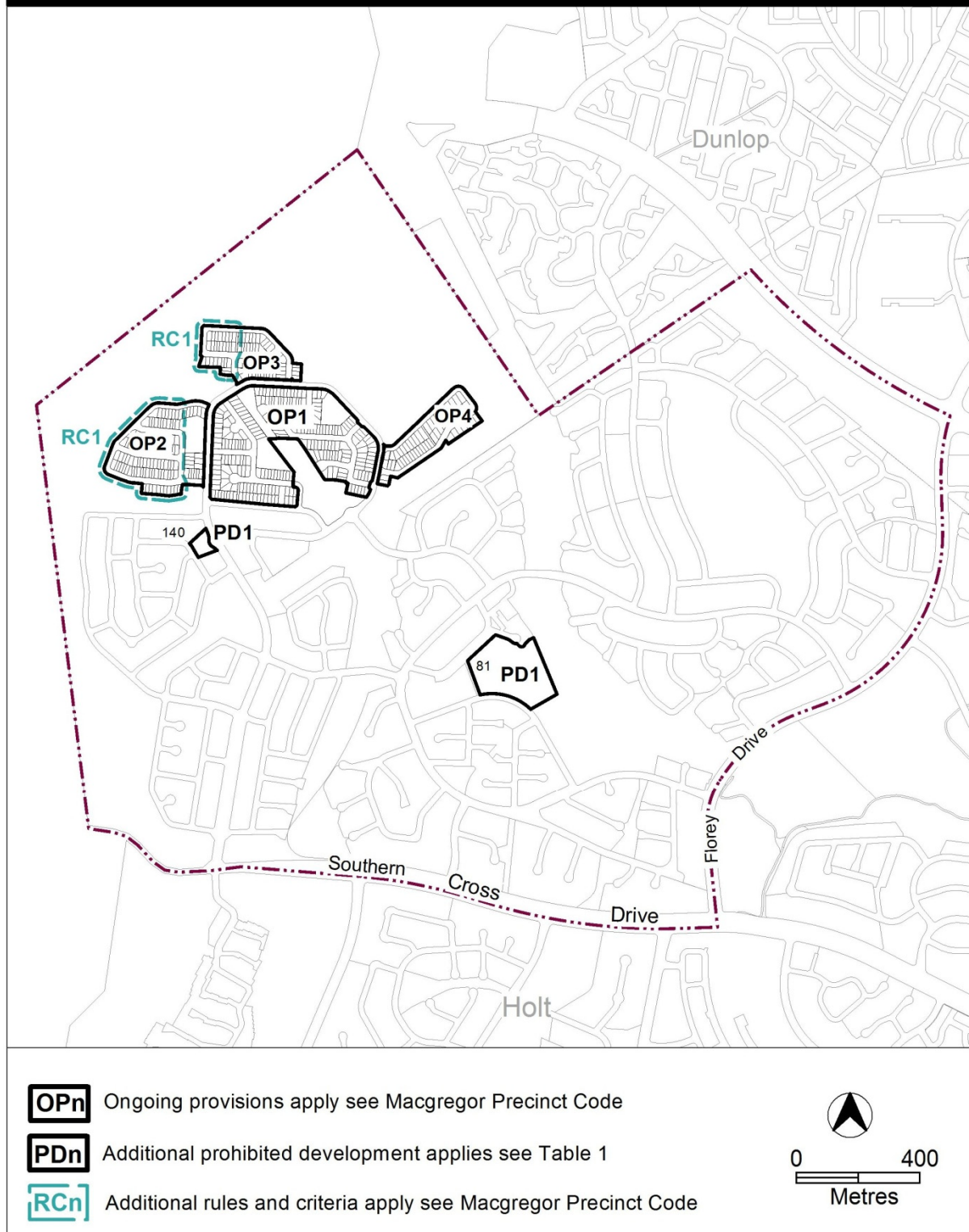
---

Environment and  
Sustainable Development

# Macgregor Precinct Map and Code

*This page is intentionally blank.*

# Macgregor Precinct Map



# Assessment Tracks

The following tables identify the additional prohibited development and additional merit track development for blocks and parcels shown in the Macgregor Precinct Map (identified as PDn or MTn). Development that is exempt from requiring development approval, other prohibited development and the minimum assessment track applicable to each development proposal is set out in the relevant zone development table.

The following table constitutes part of the relevant zone development table.

**Table 1 – Additional prohibited development**

Additional prohibited development		
Suburb precinct map label	Zone	Development
PD1	CFZ	<i>retirement village</i> <i>supportive housing</i>

# Macgregor Precinct Code

## Contents

Introduction.....	2
Additional rules and criteria .....	4
RC1 – Macgregor West residential area .....	4
Element 1: Buildings .....	4
1.1 Number of storeys.....	4
Other ongoing provisions.....	5
OP1 – Macgregor West residential area 1 .....	5
OP2 – Macgregor West residential area 2.....	6
OP3 – Macgregor West residential area 3.....	7
OP4 – Macgregor West residential area 4.....	8

## Figures

Figure 1 Macgregor West residential area 1 .....	5
Figure 2 Macgregor West residential area 2.....	6
Figure 3 Macgregor West residential area 3.....	7
Figure 4 Macgregor West residential area 4.....	8



# Introduction

## Name

The name of this code is **Macgregor Precinct Code**.

## Application

The code applies to the Division of Macgregor.

## Purpose

This code provides additional planning, design and environmental controls for specific areas or blocks and may also contain references to provisions in other codes.

In conjunction with other relevant codes it will be used by the *Authority* to assess development applications and offer guidance to intending applicants in designing development proposals and preparing development applications.

## Structure

This code contains additional rules and/or criteria for particular blocks or parcels identified as areas RCn on the precinct map, to be read in conjunction with the relevant development code. It may also contain sub-parts.

Each element has one or more rules and, unless the respective rule is mandatory, each rule has an associated criterion. Rules provide quantitative, or definitive, controls. By contrast, criteria are chiefly qualitative in nature.

In some instances rules are mandatory. Such rules are accompanied by the words “This is a mandatory requirement. There is no applicable criterion.” Non-compliance with a mandatory rule will result in the refusal of the development application. Conversely, the words “There is no applicable rule” is found where a criterion only is applicable.

## Code hierarchy

Under the *Planning and Development Act 2007*, where more than one type of code applies to a development, the order of precedence if there is inconsistency of provisions between codes is: precinct code, development code and general code.

If more than one precinct code applies to the site, the most recent precinct code takes precedence to the extent of any inconsistency.

## Definitions

Defined terms, references to legislation and other documents are italicised.

Definitions of terms used in this code are listed in part 13 of the Territory Plan or, for terms applicable only to this code, associated with the respective rule.

**Acronyms**

ACTPLA	Planning and Land Authority within the ACT Environment and Sustainable Development Directorate
EPA	ACT Environment Protection Authority
ESA	ACT Emergency Services Agency
ESDD	ACT Environment and Sustainable Development Directorate
NCA	National Capital Authority
P&D Act	Planning and Development Act 2007
TAMS	ACT Territory and Municipal Services Directorate

## Additional rules and criteria

This part applies to blocks and parcels identified in the Macgregor Precinct Map (RCn). It should be read in conjunction with the relevant zone development code and related codes.

### RC1 – Macgregor West residential area

This part applies to blocks and parcels identified in area RC1 shown on the Macgregor Precinct Map.

#### Element 1: Buildings

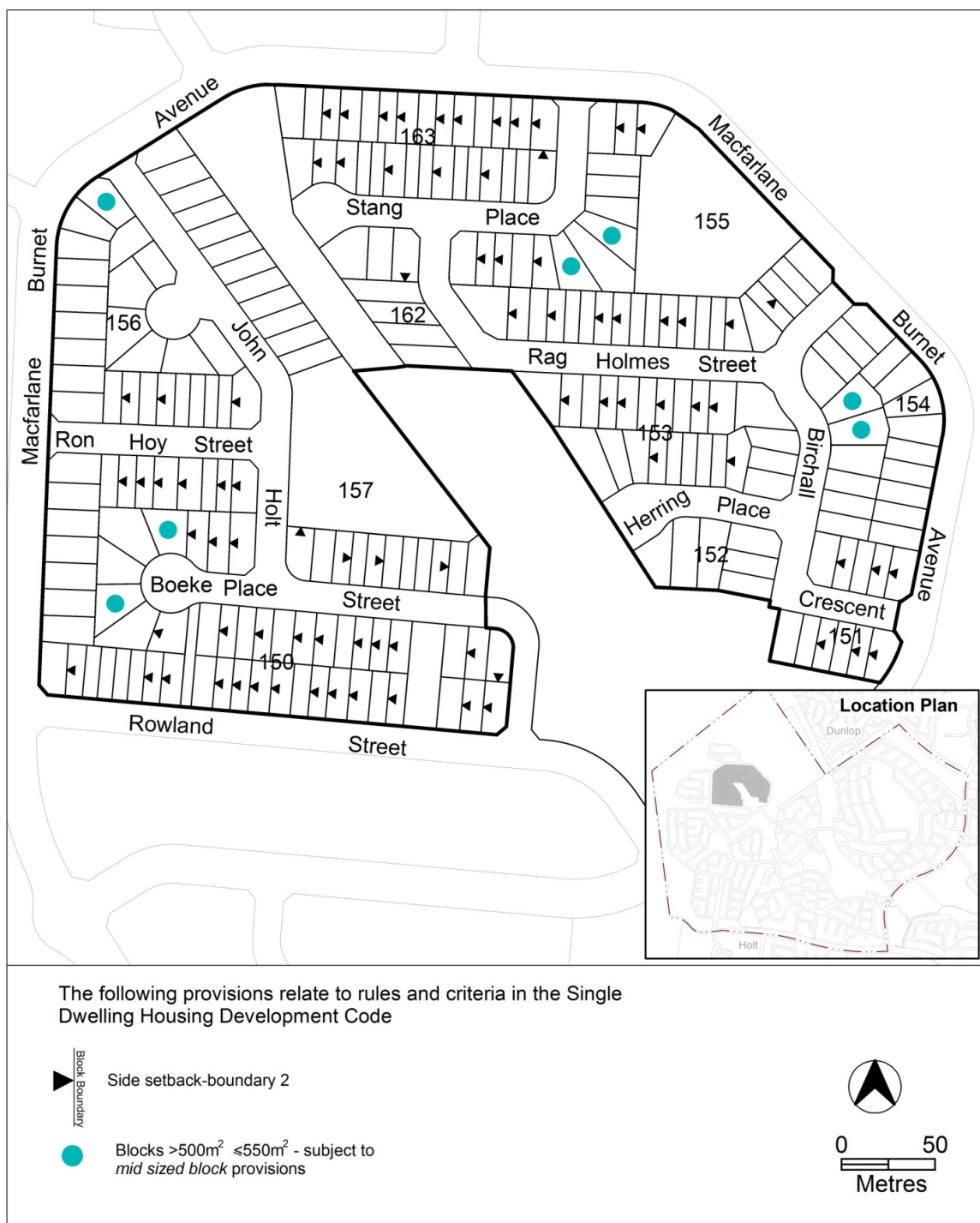
Rules	Criteria
<b>1.1 Number of storeys</b>	
R1 The maximum number of <i>storeys</i> is 1.	This is a mandatory requirement. There is no applicable criterion.

## Other ongoing provisions

This part applies to blocks and parcels identified as ongoing provisions (OPn) in the Macgregor Precinct Map. It should be read in conjunction with the relevant zone development code and related codes.

### OP1 – Macgregor West residential area 1

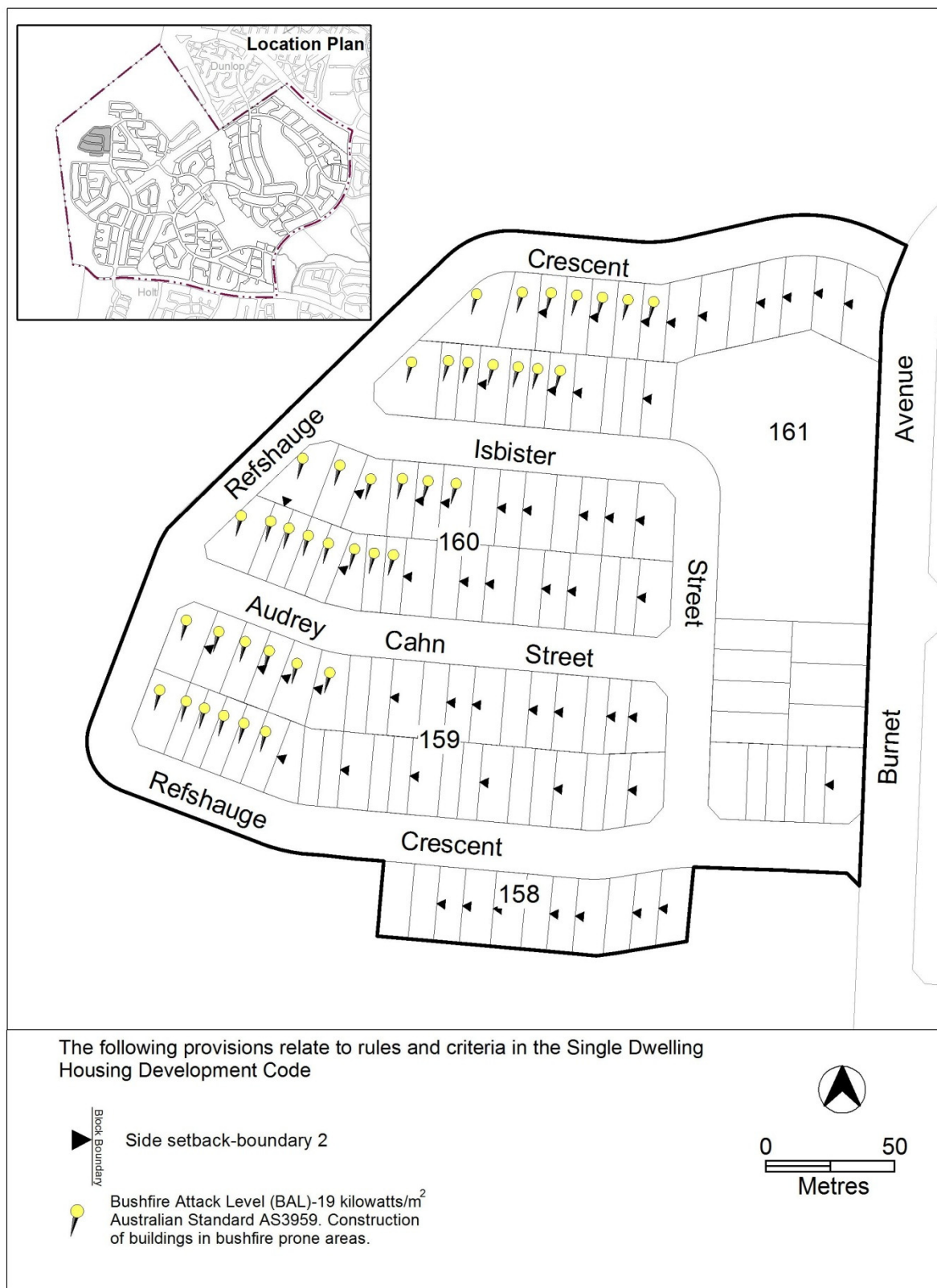
This part applies to blocks and parcels identified in area OP1 shown on the Macgregor Precinct Map.



**Figure 1 Macgregor West residential area 1**

## OP2 – Macgregor West residential area 2

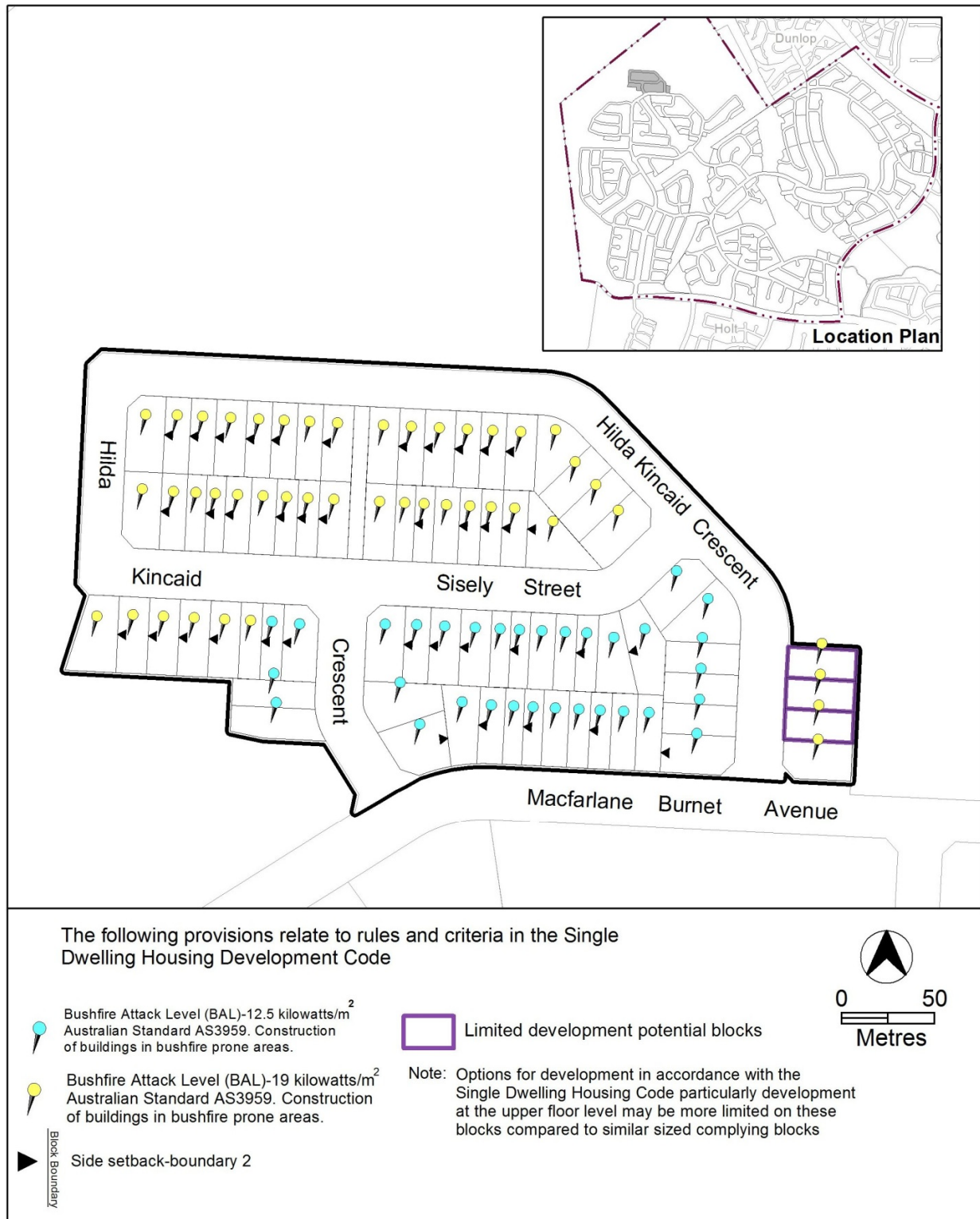
This part applies to blocks and parcels identified in area OP2 shown on the Macgregor Precinct Map.



**Figure 2 Macgregor West residential area 2**

## OP3 – Macgregor West residential area 3

This part applies to blocks and parcels identified in area OP3 shown on the Macgregor Precinct Map.



**Figure 3 Macgregor West residential area 3**



## OP4 – Macgregor West residential area 4

This part applies to blocks and parcels identified in area OP4 shown on the Macgregor Precinct Map.

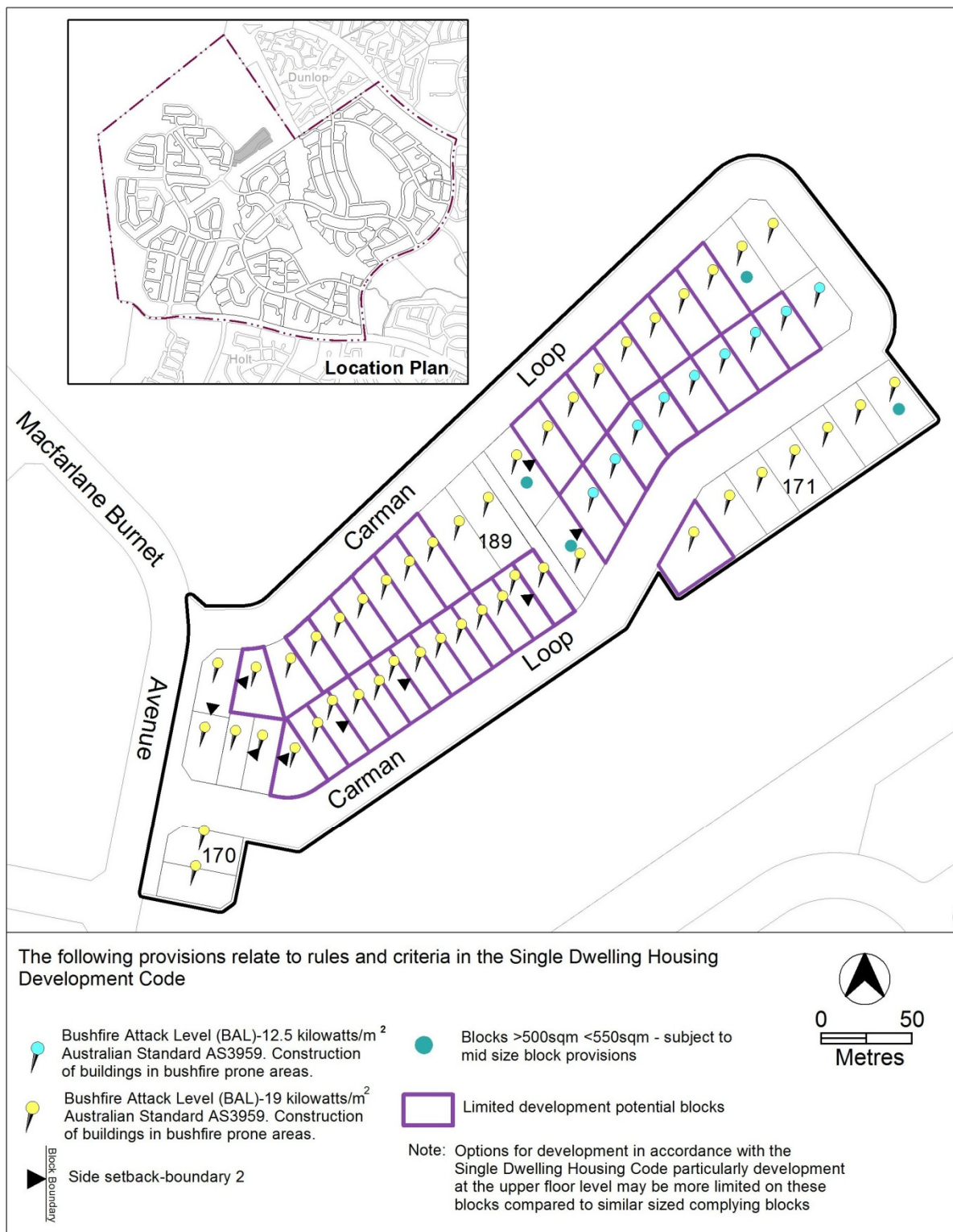


Figure 4 Macgregor West residential area 4