

Tree Protection (Built-up Urban Areas) Declaration 2014 (No 2)

Notifiable Instrument NI2014—383

made under the *Tree Protection Act 2005*, section 7 (Application of Act—built-up urban areas)

1 Name of instrument

This instrument is the *Tree Protection (Built-up Urban Areas) Declaration 2014 (No 2)*.

2 Commencement

This instrument commences on the day after its notification day.

3 Determination

I declare the following as built-up urban areas as designated in parts 1 to 6 of schedule 1:

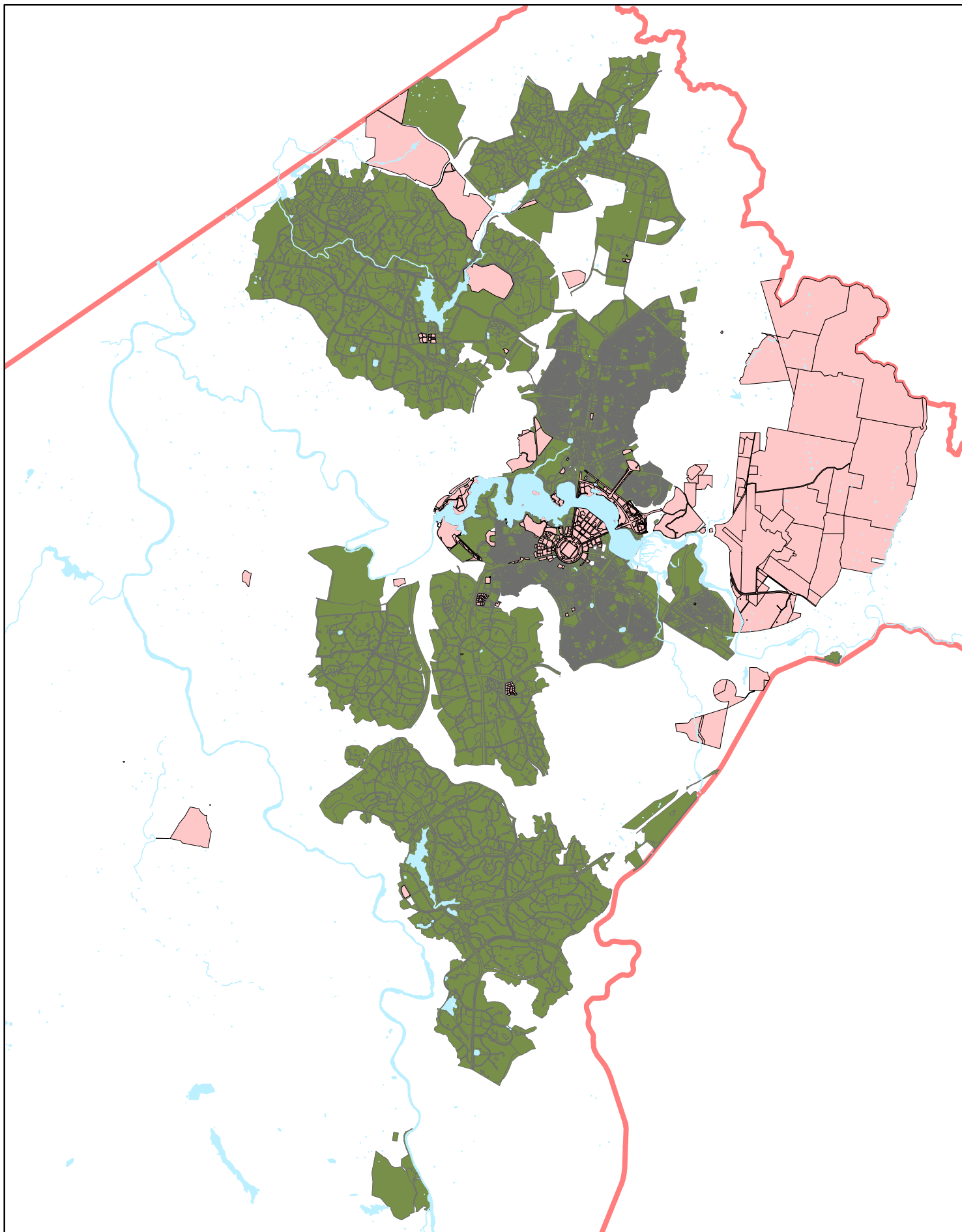
- a) Part 1 – Gungahlin suburbs and Hall (including Kenny, Taylor, Moncrieff and Throsby);
- b) Part 2 – Belconnen suburbs (including Lawson and Charnwood Homestead);
- c) Part 3 – Canberra Central suburbs (including Oaks Estate, Beard, and North Watson);
- d) Part 4 – Weston Creek and Molonglo Valley suburbs;
- e) Part 5 – Woden Valley suburbs; and
- f) Part 6 – Tuggeranong suburbs (including Tharwa and Hume).

4 Revocation

This instrument revokes the *Tree Protection (Built-up Urban Areas) Declaration 2014 (No 1)* (NI 2014-81).

Shane Rattenbury MLA
Minister for Territory and Municipal Services

13 August 2014



Schedule 1 Overview

Definition of the built - up area for the Tree Protection Act 2005 section 7.

Legend

- Built-up urban areas for purpose of the Tree Protection Act 2005 section 7. Territory land excluding broadacre, hills, ridges & buffers, forestry, river corridors, rural and water features.
- National Land
 - Water Features
 - Territory Boundaries

Date: 12 Aug 2014
Time: 1:57 PM
Coordinate System:
GDA 1994 MGA Zone 55
Projection: Transverse Mercator
Datum: GDA 1994

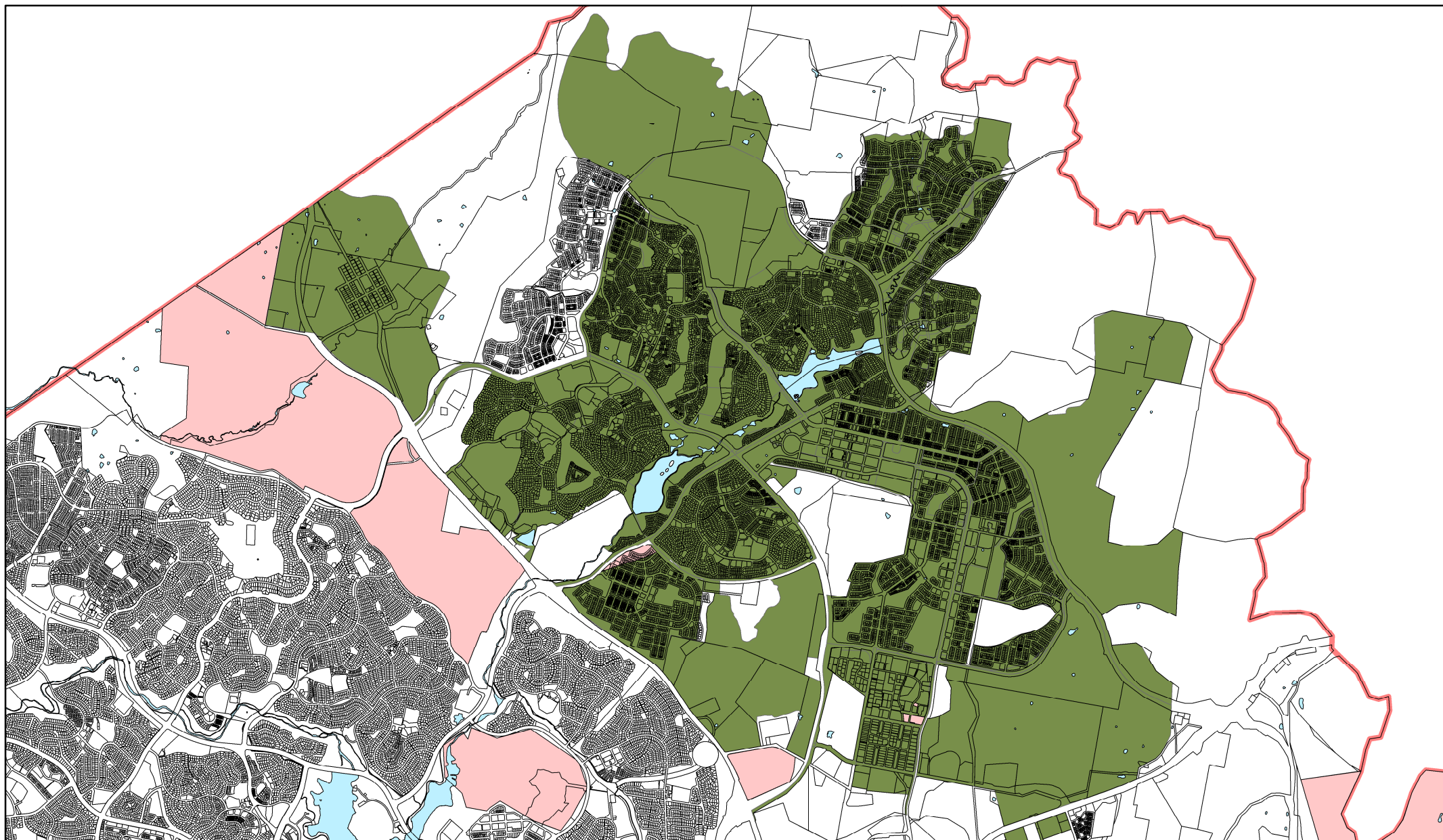


0 1,050 2,100 4,200
Metres
Scale @ A4: 1:175,000

Disclaimer:

The publisher of and/or contributors to this production accept no responsibility for any injury, loss or damage arising from its use or errors or omissions therein. While all care is taken to ensure a high degree of accuracy users are invited to notify any map discrepancies and should use this map with due care.





Schedule 1 Part 1 of 6

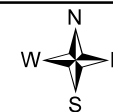
Gungahlin including Hall

Definition of the built - up area for the Tree Protection Act 2005 section7.

Legend

- Built-up urban areas for purpose of the Tree Protection Act 2005 section 7. Territory land excluding broadacre, hills, ridges & buffers, forestry, river corridors, rural and water features.
- National Land
- Water Features
- Territory Boundaries

Date: 22 Jul 2014
Time: 1:00 PM
Coordinate System:
GDA 1994 MGA Zone 55
Projection: Transverse Mercator
Datum: GDA 1994

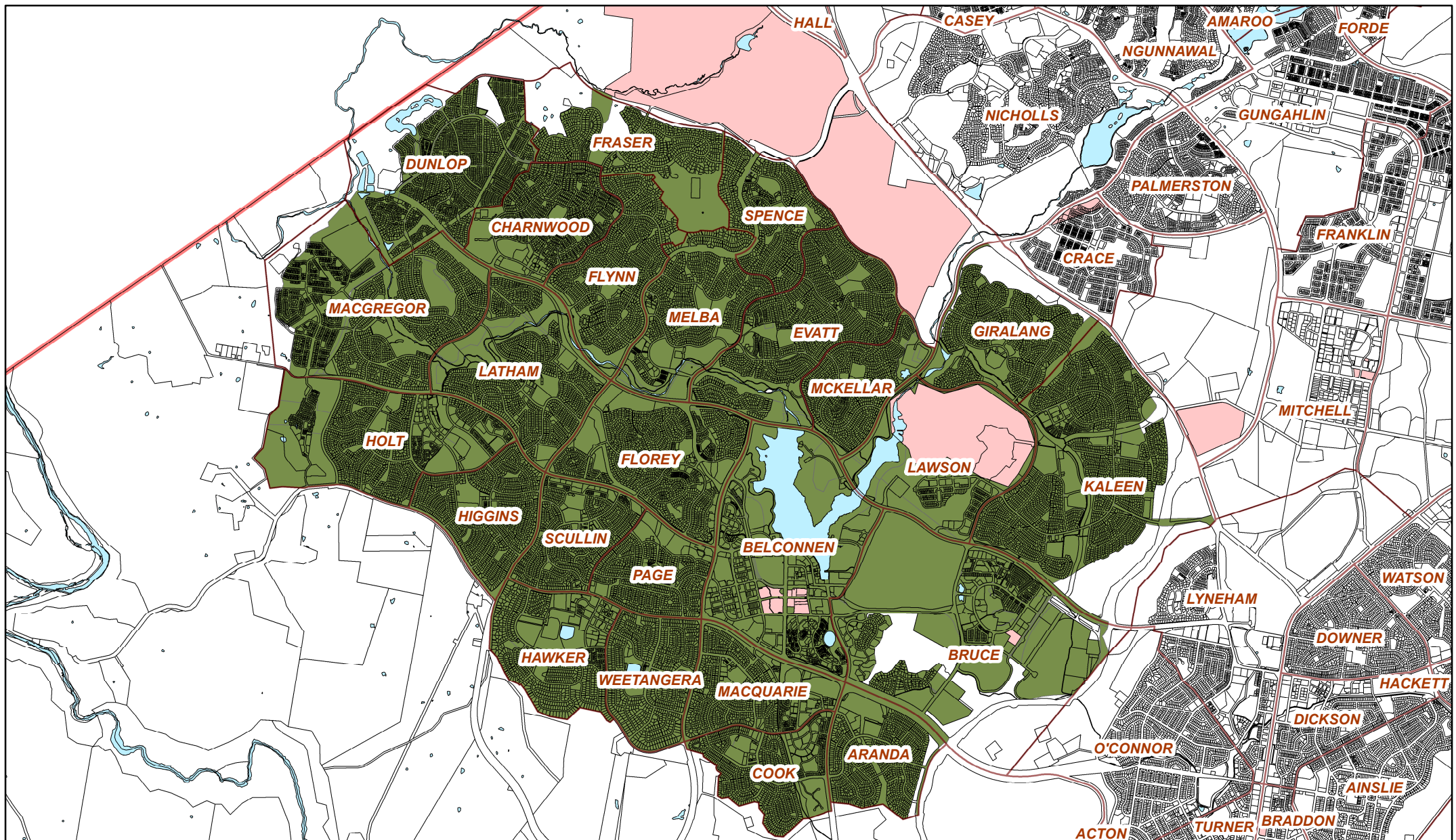


0 750 1,500 3,000
Metres
Scale @ A4: 1:63,000

Disclaimer:

The publisher of and/or contributors to this production accept no responsibility for any injury, loss or damage arising from its use or errors or omissions therein. While all care is taken to ensure a high degree of accuracy users are invited to notify any map discrepancies and should use this map with due care.







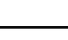
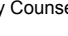


Schedule 1 Part 2 of 6

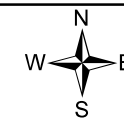
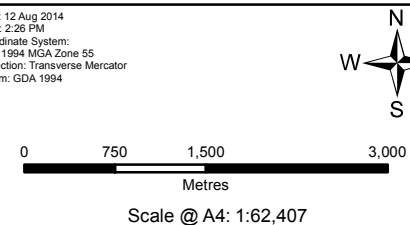
Belconnen

Definition of the built - up area for the Tree Protection Act 2005 section 7.

Legend

- | | | | |
|---|---|---|----------------------|
|  | Built-up urban areas for purpose of the Tree Protection Act 2005 section 7. Territory land excluding broadacre, hills, ridges & buffers, forestry, river corridors, rural and water features. |  | National Land |
|  | |  | Water Features |
|  | |  | Territory Boundaries |

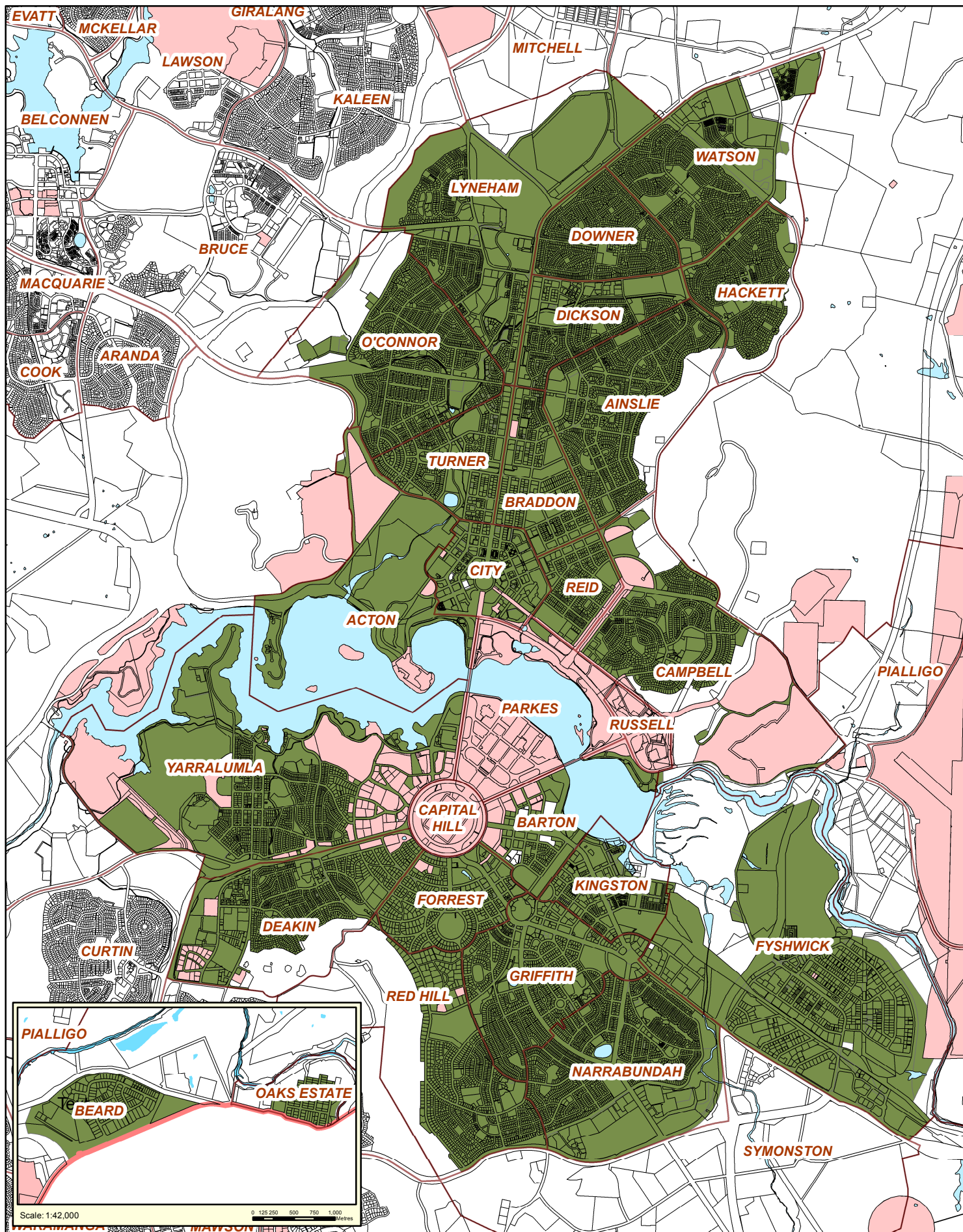
Date: 12 Aug 2014
Time: 2:26 PM
Coordinate System:
GDA 1994 MGA Zone 55
Projection: Transverse Mercator
Datum: GDA 1994



Disclaimer:

The publisher of and/or contributors to this production accept no responsibility for any injury, loss or damage arising from its use or errors or omissions therein. While all care is taken to ensure a high degree of accuracy users are invited to notify any map discrepancies and should use this map with due care.





Schedule 1 Part 3 of 6

Canberra Central including Beard and Oaks Estate

Definition of the built - up area for the Tree Protection Act 2005 section 7.

Legend

- Built-up urban areas for purpose of the Tree Protection Act 2005 section 7. Territory land excluding broadacre, hills, ridges & buffers, forestry, river corridors, rural and water features.
- National Land
- Water Features
- Territory Boundaries

Date: 22 Jul 2014
Time: 2:21 PM
Coordinate System:
GDA 1994 MGA Zone 55
Projection: Transverse Mercator
Datum: GDA 1994

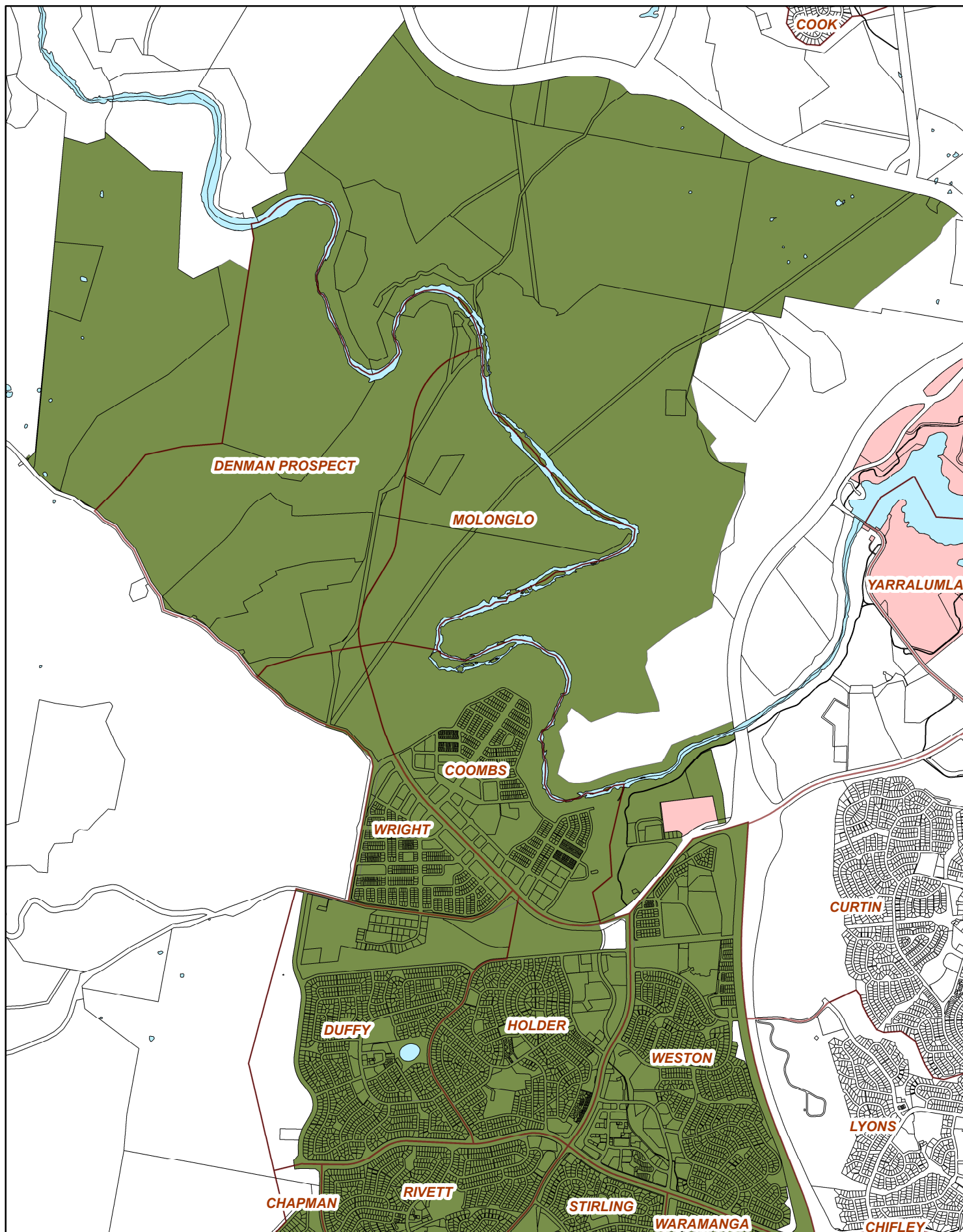


0 375 750 1,500
Metres
Scale @ A4: 1:60,000

Disclaimer:

The publisher of and/or contributors to this production accept no responsibility for any injury, loss or damage arising from its use or errors or omissions therein. While all care is taken to ensure a high degree of accuracy users are invited to notify any map discrepancies and should use this map with due care.




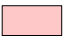




Schedule 1 Part 4 of 6

Weston Creek Molonglo

Definition of the built - up area for the Tree Protection Act 2005 section7.

Legend

	Built-up urban areas for purpose of the Tree Protection Act 2005 section 7. Territory land excluding broadacre, hills, ridges & buffers, forestry, river corridors, rural and water features.		National Land
			Water Features

Date: 22 Jul 2014
Time: 12:56 PM
Coordinate System:
GDA 1994 MGA Zone 55
Projection: Transverse Mercator
Datum: GDA 1994

0 250 500 1,000
Metres
Scale @ A4: 1:37,000

Disclaimer:

The publisher of and/or contributors to this production accept no responsibility for any injury, loss or damage arising from its use or errors or omissions therein. While all care is taken to ensure a high degree of accuracy users are invited to notify any map discrepancies and should use this map with due care.





Schedule 1 Part 5 of 6

Woden Valley

Definition of the built - up area for the Tree Protection Act 2005 section7.

Legend

- Built-up urban areas for purpose of the Tree Protection Act 2005 section 7. Territory land excluding broadacre, hills, ridges & buffers, forestry, river corridors, rural and water features.
- National Land
- Water Features

Date: 22 Jul 2014
Time: 12:46 PM
Coordinate System:
GDA 1994 MGA Zone 55
Projection: Transverse Mercator
Datum: GDA 1994



0 250 500 1,000
Metres

Scale @ A4:1:37,000

Disclaimer:

The publisher of and/or contributors to this production accept no responsibility for any injury, loss or damage arising from its use or errors or omissions therein. While all care is taken to ensure a high degree of accuracy users are invited to notify any map discrepancies and should use this map with due care.





Schedule 1 Part 6 of 6

Tuggeranong including Tharwa

Definition of the built - up area for the Tree Protection Act 2005 section 7.

Legend

- Built-up urban areas for purpose of the Tree Protection Act 2005 section 7. Territory land excluding broadacre, hills, ridges & buffers, forestry, river corridors, rural and water features.
- National Land
- Water Features
- Territory Boundaries

Date: 22 Jul 2014
Time: 2:21 PM
Coordinate System:
GDA 1994 MGA Zone 55
Projection: Transverse Mercator
Datum: GDA 1994



0 500 1,000 2,000
Metres
Scale @ A4: 1:80,000

Disclaimer:

The publisher of and/or contributors to this production accept no responsibility for any injury, loss or damage arising from its use or errors or omissions therein. While all care is taken to ensure a high degree of accuracy users are invited to notify any map discrepancies and should use this map with due care.

