

# Nature Conservation (Lower Molonglo River Corridor Nature Reserve) Activities Declaration 2015 (No 1)

Notifiable Instrument NI2015–303

made under the

**Nature Conservation Act 2014, s256 (Conservator may make activities declarations)**

---

## 1 Name of instrument

This instrument is the *Nature Conservation (Lower Molonglo River Corridor Nature Reserve) Activities Declaration 2015 (No1)*.

## 2 Commencement

This instrument commences on the day after notification.

*Note* Section 81 of the *Legislation Act 2001* applies to the exercise of a power to make an appointment or statutory instrument given by a law that has been notified but has not commenced.

## 3 Application

This instrument applies to an area reserved in the Territory Plan as a nature reserve and identified in the map in the schedule as the Lower Molonglo River Corridor Nature Reserve (Reserve).

## 4 Declaration

I, reasonably believing that certain activities if carried out on Lower Molonglo River Corridor Nature Reserve may have a negative impact on the reserve, declare that in the Reserve:

- the activities listed in Column 1 of the schedule are prohibited; and
- the activities listed in Column 2 of the schedule are restricted and may only be carried out if the requirements identified in Column 2 are complied with for the relevant activity.

Dr Annie Lane  
Conservator of Flora and Fauna  
10 June 2015

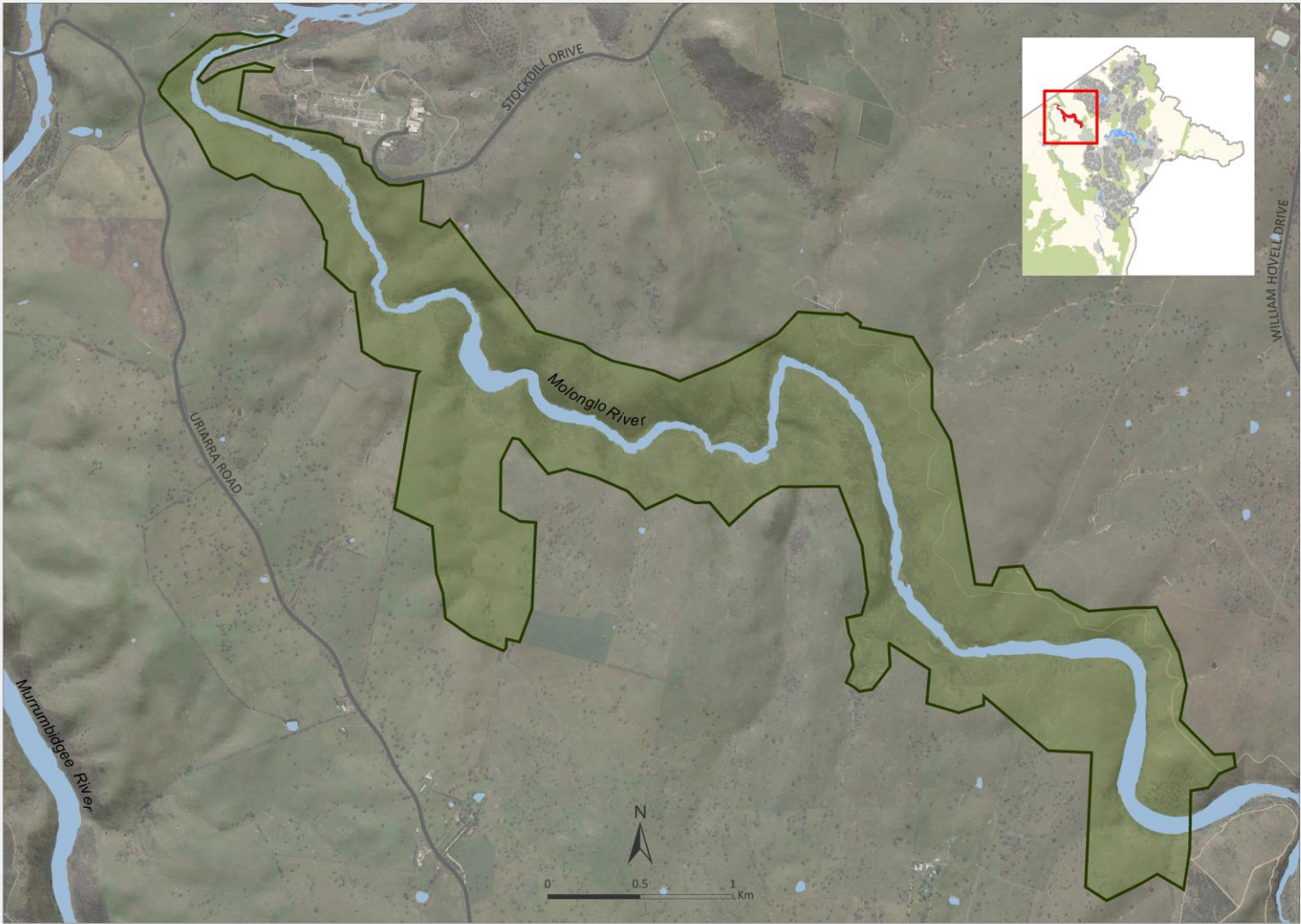
# SCHEDULE ACTIVITIES DECLARATION

| Column 1                      |   | Column 2  |   |
|-------------------------------|---|---|---|
| PROHIBITED ACTIVITIES         |   | RESTRICTED ACTIVITIES   |   |
| <b>NO DOGS</b>                |    | <b>EQUESTRIAN ACTIVITIES</b><br>Allowed on marked equestrian trails only (see map)                                    |    |
| <b>NO CAMPING</b>             |    | <b>MOUNTAIN BIKE RIDING/CYCLING</b><br>On management trails only (see map)  |    |
| <b>NO FIRES</b>               |   | <b>ROCKCLIMBING AND ABSEILING</b><br>Rock climbing and abseiling are not allowed between June and October             |   |
| <b>NO FIREWOOD COLLECTION</b> |  | <b>WATERCRAFT</b><br>Non-motorised watercraft only  |  |
| <b>NO MOTORISED VEHICLES</b>  |  | <b>ENVIRONMENT VOLUNTEER ACTIVITIES</b><br>May be conducted only in accordance with approved volunteer works programs |  |

# MAP



## LOWER MOLONGLO RIVER CORRIDOR



- Reserve
- Road
- River