

Nature Conservation (Woodstock Reserve) Activities Declaration 2015 (No 1)

Notifiable instrument NI2015–406

made under the

Nature Conservation Act 2014, s256 (Conservator may make activities declarations)

1 Name of instrument

This instrument is the *Nature Conservation (Woodstock Reserve) Activities Declaration 2015 (No1)*.

2 Commencement

This instrument commences on the day after notification.

3 Application

This instrument applies to the area outlined in bold and shown as “reserve” in the map in schedule 1 as the Woodstock Reserve (Woodstock Reserve).

4 Declaration

I declare that in the Woodstock Reserve:

- the activities listed in column 1 of schedule 2 are prohibited activities; and
- the activities listed in column 2 of schedule 2 are restricted activities and may only be carried out if the requirements identified in Column 2 of schedule 2 for the relevant activity are complied with.

Example - prohibited activity

The activity of “camping” is a prohibited activity in the Woodstock Reserve as this activity is listed in column 1 of schedule 2. This means that camping cannot be carried out in the Woodstock Reserve under any circumstances.

Example – restricted activity

The activity of walking a dog is a restricted activity in the Woodstock Reserve as this activity is listed in column 2 of schedule 2. This means that the activity of walking a dog cannot be carried out in Woodstock Reserve unless it is done in a way that meets the required conditions. In this case, the required conditions are that:

- a) the dog is permitted on marked trails only at Shepherds Lookout (see map at schedule 1).

Note 1: Under section 256 of the *Nature Conservation Act 2014* (the Act) the Conservator may declare activities in a reserve to be a restricted or prohibited activity if the conservator reasonably believes that a certain activity, if carried out in a reserve, may have a negative impact on the reserve.

Note 2: Under section 169(1)(b) of the Act the area in the Woodstock Reserve is a “reserve” for the purposes of the Act because the area includes:

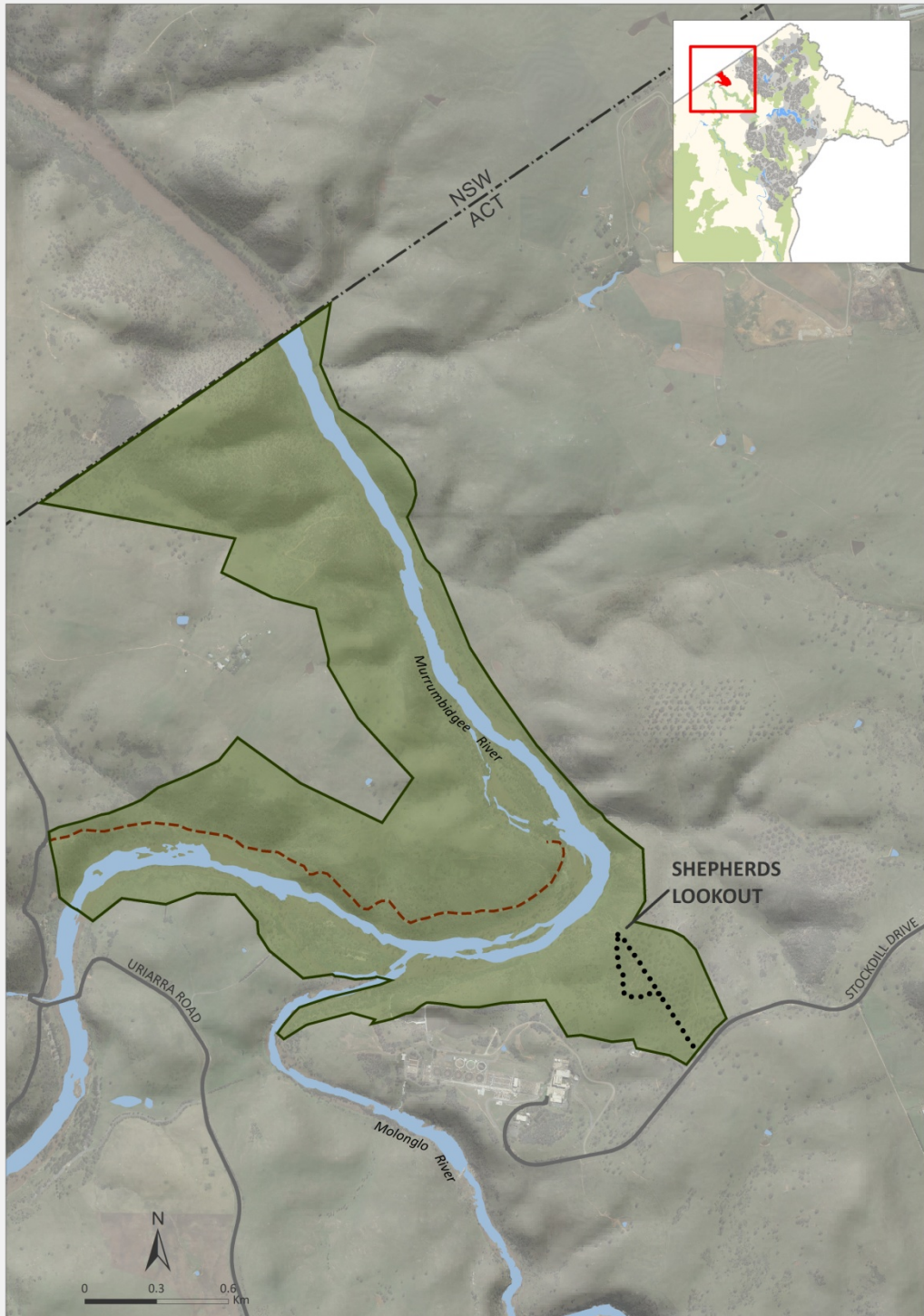
- a) public land reserved in the Territory Plan as a Nature Reserve under section 315(c) of the *Planning and Development Act 2007*; and
- b) public land reserved in the Territory Plan as a Special Purpose Reserve under section 315(d) of the *Planning and Development Act 2007*; and
 - i. prescribed by section 5 of the *Nature Conservation Regulation 2015* as a reserve.

Dr Annie Lane
Conservator of Flora and Fauna
10 July 2015

SCHEDULE 1











WOODSTOCK RESERVE



- | | | |
|------------------|---------------------|----------------|
| Reserve | Dog off leash trail | Road |
| Management trail | River | ACT/NSW border |

SCHEDULE 2 ACTIVITIES DECLARATION

Column 1		Column 2	
PROHIBITED ACTIVITIES		RESTRICTED ACTIVITIES	
NO EQUESTRIAN ACTIVITIES		DOGS OFF LEASH Permitted on marked trails at Shepherds Lookout only (see map at schedule 1)	
NO CAMPING		MOUNTAIN BIKE RIDING/CYCLING On management trails only (see map) unless signposted otherwise	
NO FIRES		ENVIRONMENT VOLUNTEER ACTIVITIES May be conducted only in accordance with approved volunteer works programs	
NO FIREWOOD COLLECTION			
NO MOTORISED VEHICLES			

Volunteer works programs means work programs that are (a) developed by volunteer groups under the *Parks, Conservation and Lands Volunteer Policy of September 2009 determined by Territory and Municipal Services (TAMS)* and (b) approved by the Parks and Conservation Service in TAMS, see <http://www.tams.act.gov.au>.