

Nature Conservation (Bullen Range Nature Reserve) Activities Declaration 2015 (No 1)

Notifiable instrument NI2015–416

made under the

Nature Conservation Act 2014, s256 (Conservator may make activities declarations)

1 Name of instrument

This instrument is the *Nature Conservation (Bullen Range Nature Reserve) Activities Declaration 2015 (No1)*.

2 Commencement

This instrument commences on the day after notification.

3 Application

This instrument applies to the area outlined in bold and shown as “reserve” in the map in schedule 1 as Bullen Range Nature Reserve (Bullen Range Nature Reserve).

4 Declaration

I declare that in Bullen Range Nature Reserve:

- the activities listed in column 1 of schedule 2 are prohibited activities; and
- the activities listed in column 2 of schedule 2 are restricted activities and may only be carried out if the requirements identified in Column 2 of schedule 2 for the relevant activity are complied with.

Example - prohibited activity

The activity of “camping” is a prohibited activity in the Bullen Range Nature Reserve as this activity is listed in column 1 of schedule 2. This means that camping cannot be carried out in the Bullen Range Nature Reserve under any circumstances.

Example – restricted activity

The activity of riding a mountain bike is a restricted activity in the Bullen Range Nature Reserve as this activity is listed in column 2 of schedule 2. This means that the activity of riding a mountain bike cannot be carried out in the Bullen Range Nature Reserve unless it is done in a way that meets the required conditions. In this case, the required conditions are that:

- a) the riding of a bike must be on a marked trail only.

Note 1: Under section 256 of the *Nature Conservation Act 2014* (the Act) the Conservator may declare activities in a reserve to be a restricted or prohibited activity if the conservator reasonably believes that a certain activity, if carried out in a reserve, may have a negative impact on the reserve.

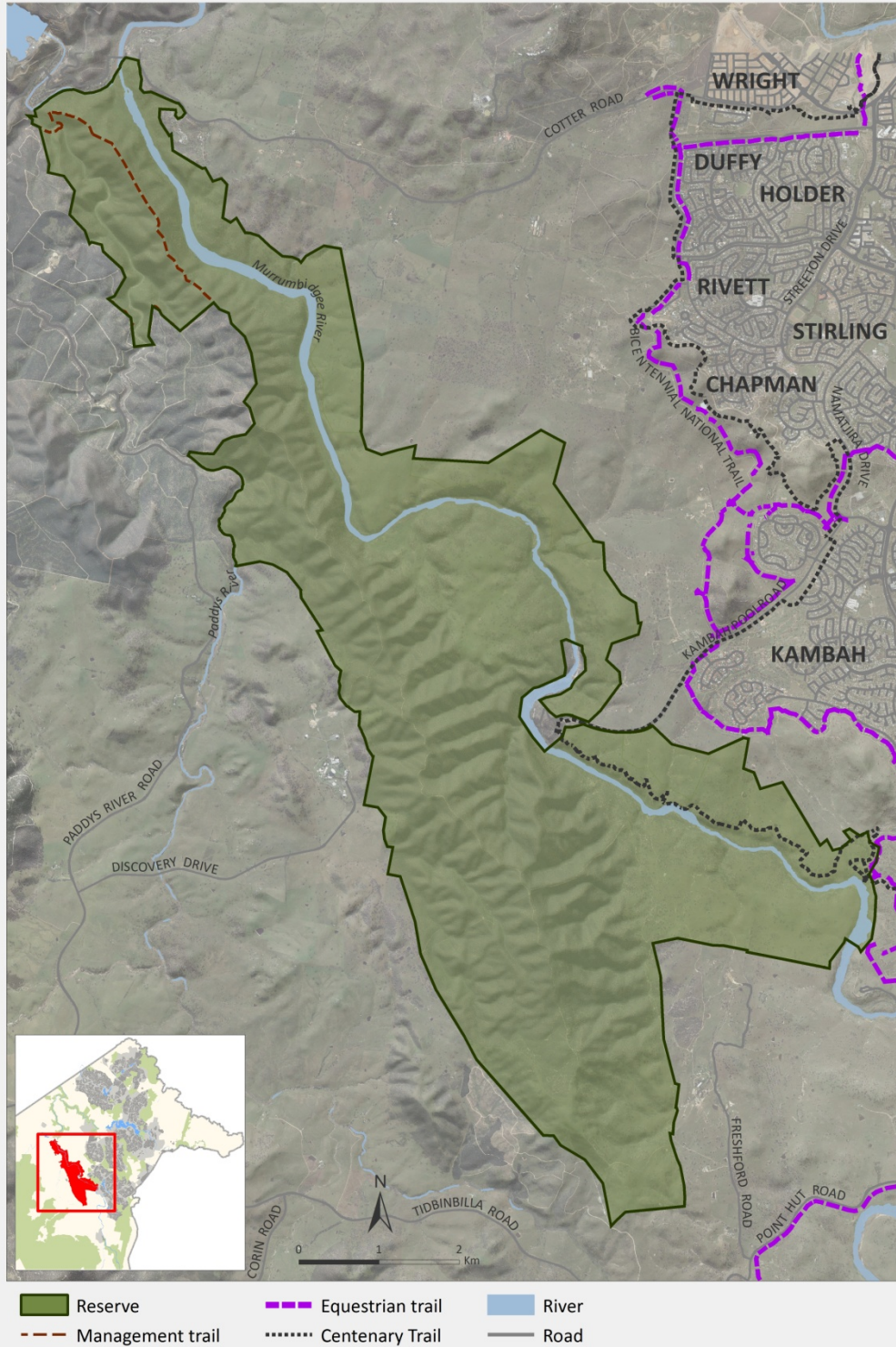
Note 2: Under section 169(1)(b) of the Act the area in the Bullen Range Nature Reserve is a “reserve” for the purposes of the Act because the area includes:

- a) public land reserved in the Territory Plan as a Nature Reserve under section 315(c) of the *Planning and Development Act 2007*; and
- b) public land reserved in the Territory Plan as a Special Purpose Reserve under section 315(d) of the *Planning and Development Act 2007*; and
 - i. prescribed by section 5 of the *Nature Conservation Regulation 2015* as a reserve.

Dr Annie Lane
Conservator of Flora and Fauna
10 July 2015









SCHEDULE 1

Bullen Range Nature Reserve



SCHEDULE 2

ACTIVITIES DECLARATION

Column 1		Column 2	
PROHIBITED ACTIVITIES		RESTRICTED ACTIVITIES	
NO DOGS		MOUNTAIN BIKE RIDING/CYCLING On Centenary Trail (see map at Schedule 1) and other trails unless signposted otherwise	
NO EQUESTRIAN ACTIVITIES		MOTOR VEHICLES On formed roads only unless signposted otherwise	
NO CAMPING		ENVIRONMENT VOLUNTEER ACTIVITIES May be conducted only in accordance with approved volunteer works programs	
NO FIRES			
NO FIREWOOD COLLECTION			

Volunteer works programs means work programs that are (a) developed by volunteer groups under the *Parks, Conservation and Lands Volunteer Policy of September 2009 determined by Territory and Municipal Services (TAMS)* and (b) approved by the Parks and Conservation Service in TAMS, see <http://www.tams.act.gov.au>.