

Nature Conservation (Lower Cotter Catchment Reserve) Activities Declaration 2016 (No 1)

Notifiable Instrument NI2016–288

made under the

Nature Conservation Act 2014, s256 (Conservator may make activities declarations)

1 Name of instrument

This instrument is the *Nature Conservation (Lower Cotter Catchment Reserve) Activities Declaration 2016 (No 1)*.

2 Commencement

This instrument commences on the day after notification.

3 Application

This instrument applies to the area outlined in bold and shown as “reserve” in the map in schedule 1 as the Lower Cotter Catchment Reserve (Lower Cotter Catchment Reserve) and is identified in the Territory Plan for the Protection of Water Supply.

4 Declaration

I declare that in the Lower Cotter Catchment Reserve:

- the activities listed in column 1 of schedule 2 are prohibited activities; and
- the activities listed in column 2 of schedule 2 are restricted activities and may only be carried out if the requirements identified in Column 2 of schedule 2 for the relevant activity are complied with.

Example - prohibited activity

The activity of “camping” is a prohibited activity in the Lower Cotter Catchment Reserve as this activity is listed in column 1 of schedule 2. This means that camping cannot be carried out in the Lower Cotter Catchment Reserve under any circumstances.

Example – restricted activity

The activity of riding a mountain bike is a restricted activity in the Lower Cotter Catchment Reserve as this activity is listed in column 2 of schedule 2. This means that the activity of riding a mountain bike cannot be carried out in the Lower Cotter Catchment Reserve unless it is done in a way that meets the required conditions. In this case, the required conditions are that:

- a) the riding of a bike can be on all public access roads unless signposted otherwise (see map at Schedule 1).

Note 1: Under section 256 of the *Nature Conservation Act 2014* (the Act) the Conservator may declare activities in a reserve to be a restricted or prohibited activity if the Conservator reasonably believes that a certain activity, if carried out in a reserve, may have a negative impact on the reserve.

Note 2: Under section 169(1)(b) of the Act the area in the Lower Cotter Catchment is a “reserve” for the purposes of the Act because the area includes:

- a) public land reserved in the Territory Plan as reserved in the Territory Plan for Protection of Water Supply under section 315(g) of the *Planning and Development Act 2007*.

5 Revocation

The *Nature Conservation (Lower Cotter Catchment) Activities Declaration 2015 (No 1)* (NI2015–305) is revoked.

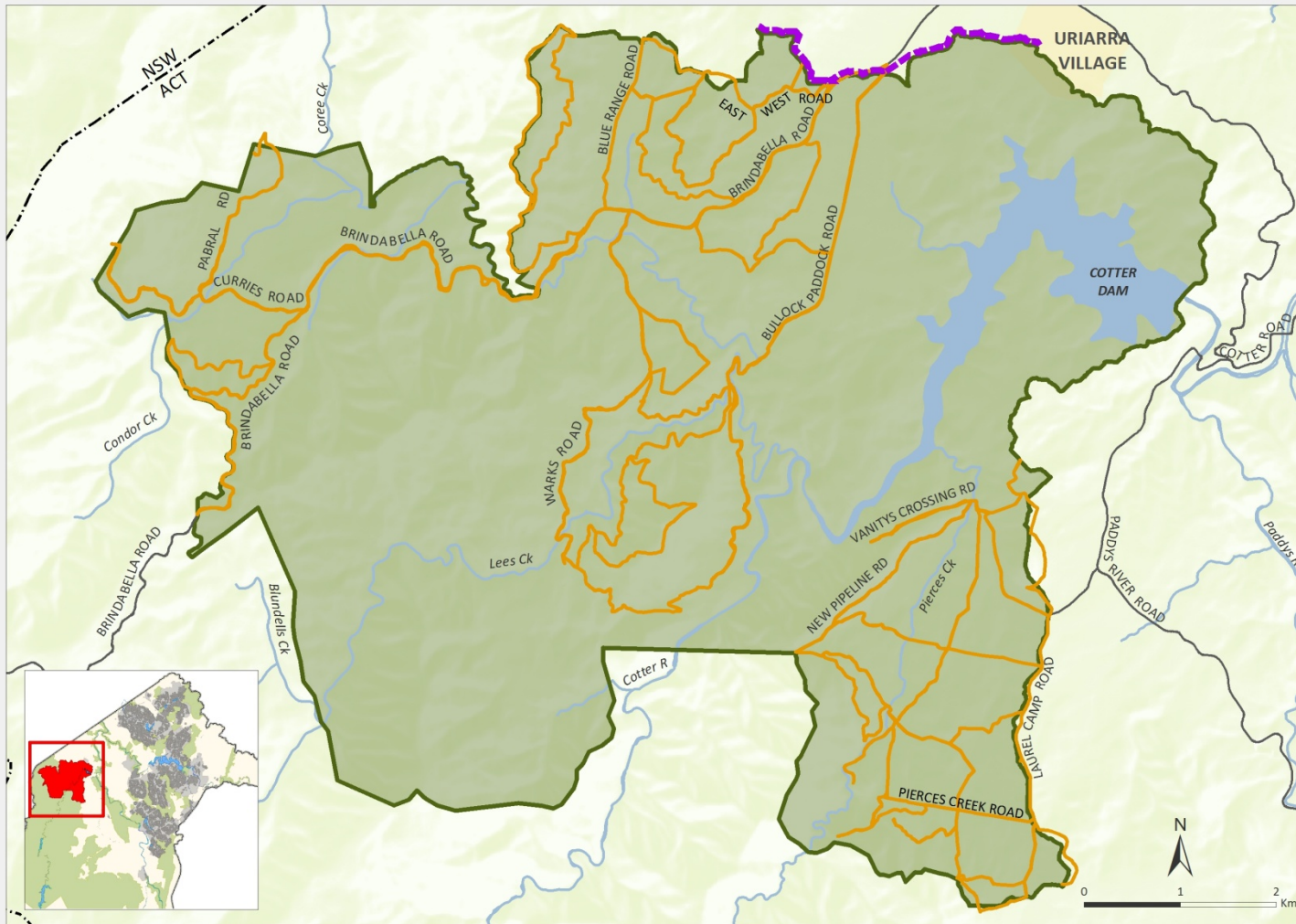
Dr Annie Lane
Conservator of Flora and Fauna

25 May 2016

SCHEDULE 1




Lower Cotter Catchment



- Reserve
- Public access roads
- Creek
- ACT/NSW border
- Management trail
- Equestrian trail
- Road

SCHEDULE 2 ACTIVITIES DECLARATION

Column 1		Column 2	
PROHIBITED ACTIVITIES		RESTRICTED ACTIVITIES	
NO CAMPING		DOGS ON LEASH Dogs on leash on public access roads and marked equestrian tracks only (see map at Schedule 1)	
NO FIRES		EQUESTRIAN ACTIVITIES On marked equestrian trails only (see map at Schedule 1)	
NO FIREWOOD COLLECTION		MOUNTAIN BIKE RIDING/CYCLING On all public access roads unless signposted otherwise (see map at Schedule 1)	
NO SWIMMING		MOTORISED VEHICLES On public access roads only unless signposted otherwise (see map at Schedule 1)	
NO WATERCRAFT		ENVIRONMENT VOLUNTEER ACTIVITIES May be conducted only in accordance with approved volunteer works programs	

Volunteer works programs means work programs that are (a) developed by volunteer groups under the *Parks, Conservation and Lands Volunteer Policy of September 2009 determined by Territory and Municipal Services (TAMS)* and (b) approved by the Parks and Conservation Service in TAMS, see <http://www.tams.act.gov.au>.