

Nature Conservation (Rob Roy Range Nature Reserve) Activities Declaration 2016

Notifiable Instrument NI2016–611

made under the

Nature Conservation Act 2014, s256 (Conservator may make activities declarations)

1 Name of instrument

This instrument is the *Nature Conservation (Rob Roy Range Nature Reserve) Activities Declaration 2016*.

2 Commencement

This instrument commences on the day after notification.

3 Application

This instrument applies to the areas outlined in bold and shown as “nature reserve” in the map in schedule 1 as the Rob Roy Range Nature Reserve. The instrument does not apply to rural lease areas shown as hatched in the map in schedule 1. Areas shown as hatched on the map in schedule 1 are excluded from the Activities Declaration.

Note: Under section 169(1)(a) of the Nature Conservation ACT 2014 (the Act) the area in the Rob Roy Range Nature Reserve is a “reserve” for the purposes of the Act because the area includes public land reserved in the Territory Plan as a Nature Reserve under section 315(c) of the Planning and Development Act 2007.

4 Declaration

I declare that in the Rob Roy Range Nature Reserve:

- i. an activity listed in column 1 of schedule 2 is prohibited;
- ii. an activity listed in column 2 of schedule 2 may only be carried out if the directions and requirements applying to the activity are complied with.

Note 1: If an activity is a ‘prohibited activity’ it means the activity cannot be carried out in any circumstance in the nature reserve. For example ‘camping’ is declared to be a prohibited activity. This means that camping cannot be carried out in the Rob Roy Range Nature Reserve under any circumstances.

Note 2: If an activity is a ‘restricted activity’ it means that it may only be carried out if the directions and requirements applying to the activity are complied with. For example, ‘riding a

mountain bike/cycling' is declared to be a restricted activity. This means that riding a mountain bike/cycling cannot be carried out in the nature reserve unless the directions and requirements are complied with. In this case, the required conditions are that the riding of a bike must be on sealed roads and marked management trails only.

Note 3: The Nature Conservation Act 2014 includes general offences which apply to all reserves. The Nature Conservation Act may be found at <http://www.legislation.act.gov.au>.

5 Revocation

The Nature Conservation (Rob Roy Range Nature Reserve) Activities Declaration 2015 (No 1) is revoked.

6 Definitions

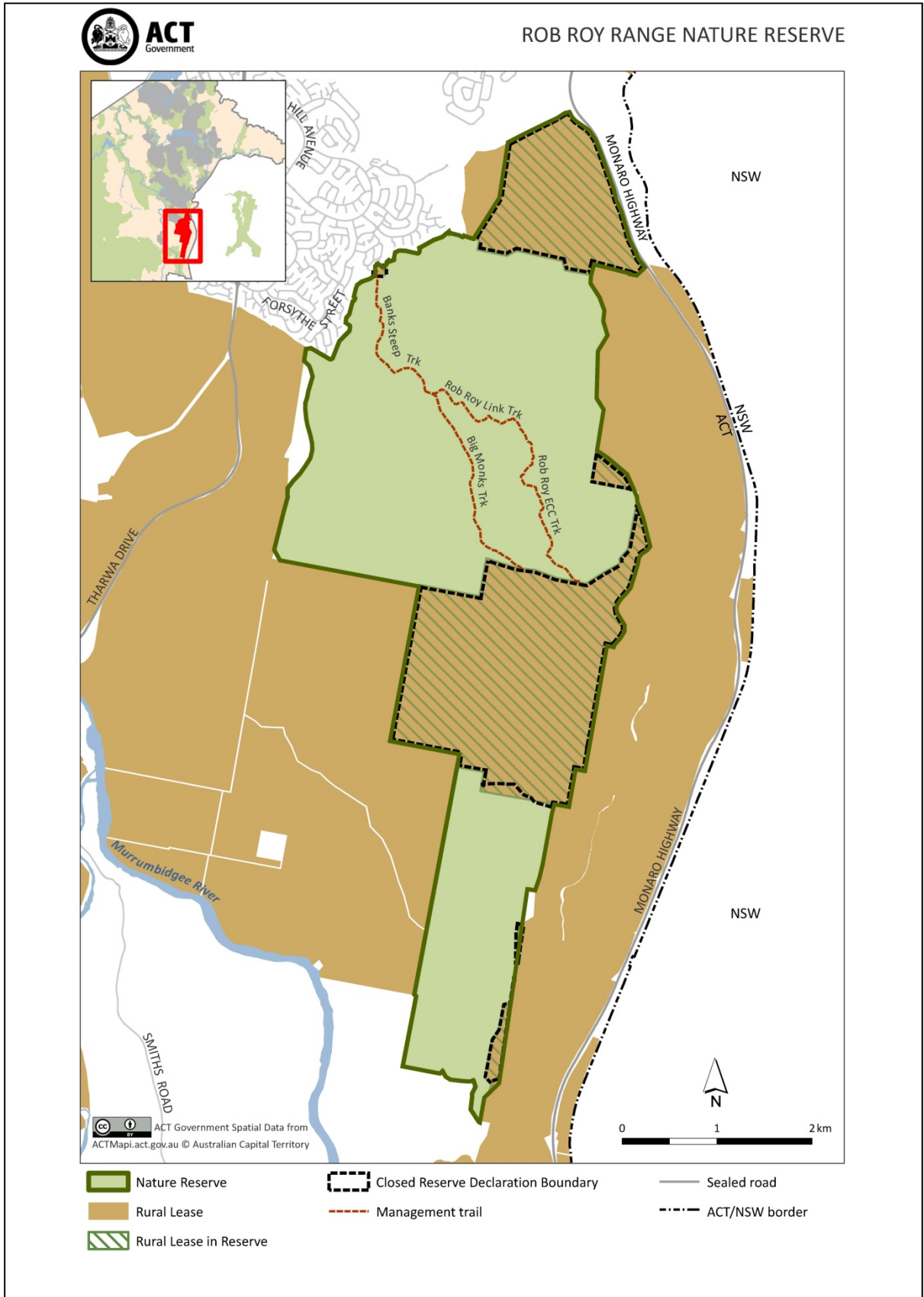
Camping means:

- setting up any tent, shelter, bivouac, swag, sleeping bag, mattress or bedding;
or
- setting up any stationary vehicle for the purpose of lying down or sleeping;
or
- lying down or sleeping in or on any stationary vehicle, tent, shelter, bivouac, swag, sleeping bag, mattress or bedding between sunset and 2 hours after sunrise.

Dr Annie Lane
Conservator of Flora and Fauna
24 October 2016






SCHEDULE 1

(See section 3)



SCHEDULE 2

(See section 4)

Column 1		Column 2	
PROHIBITED ACTIVITIES		RESTRICTED ACTIVITIES	
CAMPING IN NATURE RESERVE		USE OF NON-MOTORISED VEHICLES INCLUDING BICYCLES It is a requirement that a non-motorised vehicle, including a bicycle, is only used on a management trail as indicated in schedule 1.	
LIGHTING OR MAINTAINING FIRES		TAKING PART IN VOLUNTEER ENVIRONMENTAL ACTIVITIES It is a requirement that environment volunteer activities are carried out: <ul style="list-style-type: none"> (a) in accordance with an approved volunteer environmental activities program; and (b) the program is authorised by the Parks and Conservation Service. 	
COLLECTING WOOD OR TIMBER			
USING MOTORISED VEHICLES	