

Australian Capital Territory

# Nature Conservation (Closed Reserves— Total Fire Ban) Declaration 2019 (No 1)

Notifiable instrument NI2019–22

made under the

Nature Conservation Act 2014, s 259 (Conservator may close reserve)

---

## 1 Name of instrument

This instrument is the *Nature Conservation (Closed Reserves—Total Fire Ban) Declaration 2019 (No 1)*.

## 2 Commencement

This instrument commences on the day it is signed.

*Note:* Section 259 (5) of the *Nature Conservation Act 2014* provides that a closed reserve declaration may commence on a day or at a time earlier than its notification date.

## 3 Declaration

I declare public access to the reserves specified in column 2 of schedule 1 is prohibited during the period specified in the corresponding entry in column 3 of schedule 1.

## 4 Expiry

This instrument expires on 16 January 2019.

Scott Farquhar  
Delegate of the Conservator of Flora and Fauna

15 January 2019

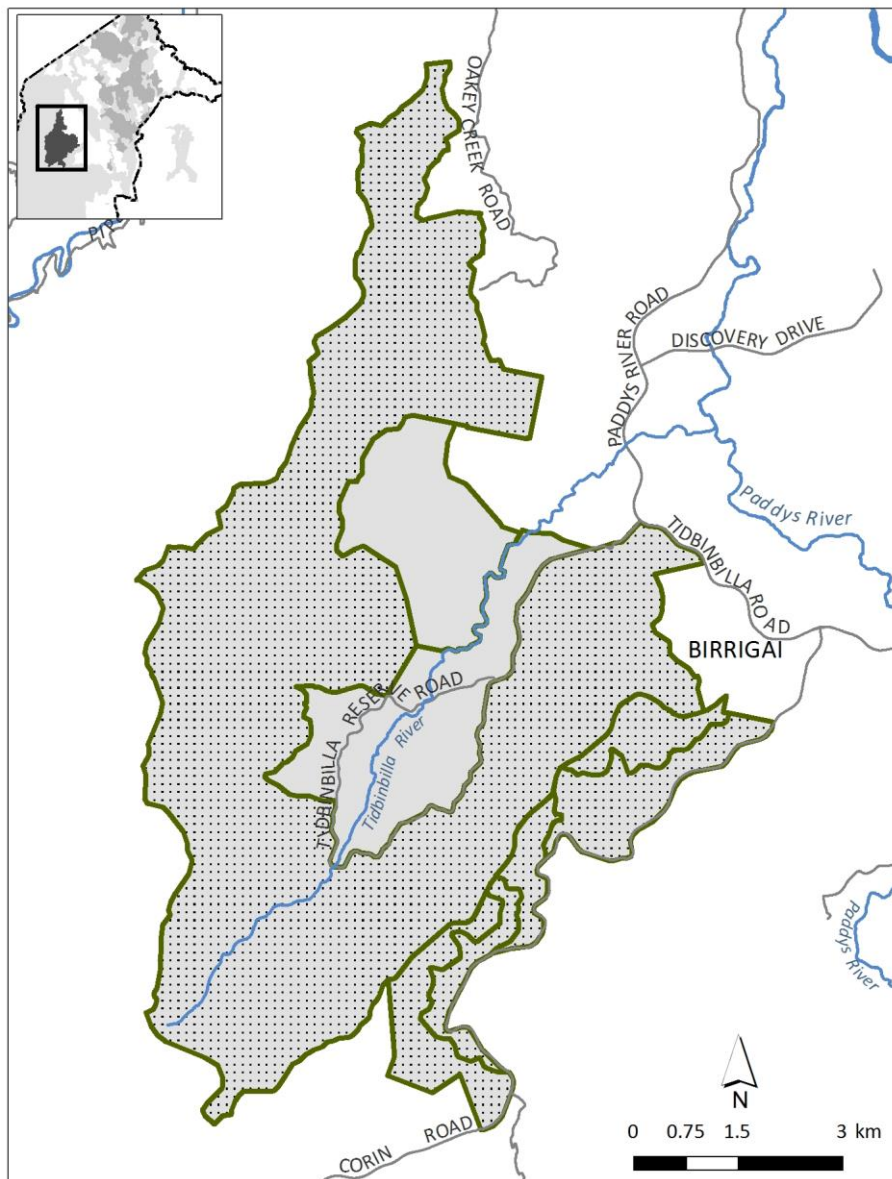
## Schedule 1 Closed reserves

(see s 3)





<b>column1 item</b>	<b>column 2 reserve</b>	<b>column 3 times when public access is prohibited</b>
1	The area identified in schedule 2 known as Tidbinbilla Nature Reserve	15 January 2019
2	The area identified in schedule 3 known as Lower Molonglo River Corridor	15 January 2019
3	The area identified in schedule 4 known as Molonglo Gorge Nature Reserve	15 January 2019
4	The area identified in schedule 5 known as Mulligans Flat Woodland Sanctuary	15 January 2019

## Schedule 2 Tidbinbilla Nature Reserve

(see sch 1 item 1)



### MAP : TIDBINBILLA NATURE RESERVE

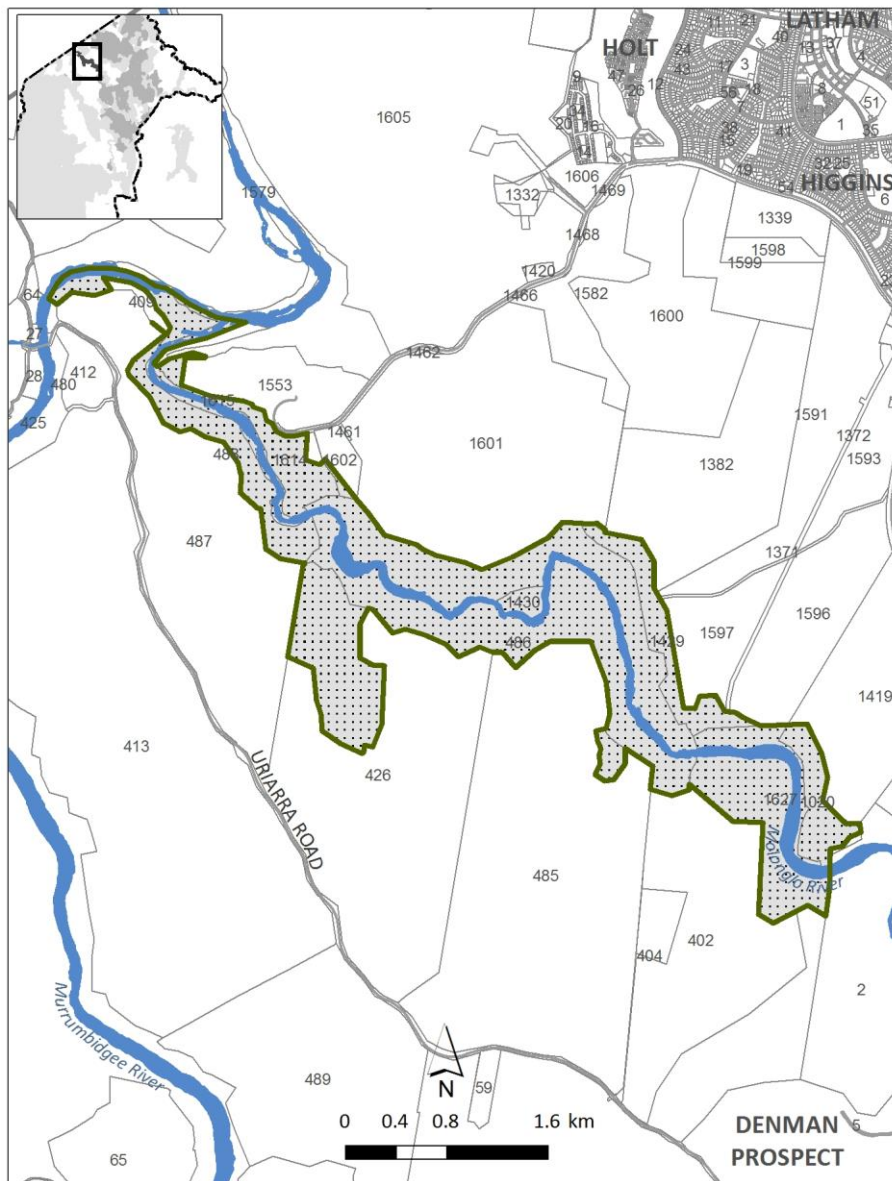
-  TIDBINBILLA NATURE RESERVE (Pb)
-  TIDBINBILLA SPECIAL PURPOSE RESERVE
-  Sealed Road
-  Watercourse

Note: Numbers refer to block ID numbers  
 ACT Government Spatial Data from ACTMapi.act.gov.au  
 © Australian Capital Territory



# Schedule 3 Lower Molonglo River Corridor

(see sch 1 item 2)



**MAP : LOWER MOLONGLO RIVER CORRIDOR**

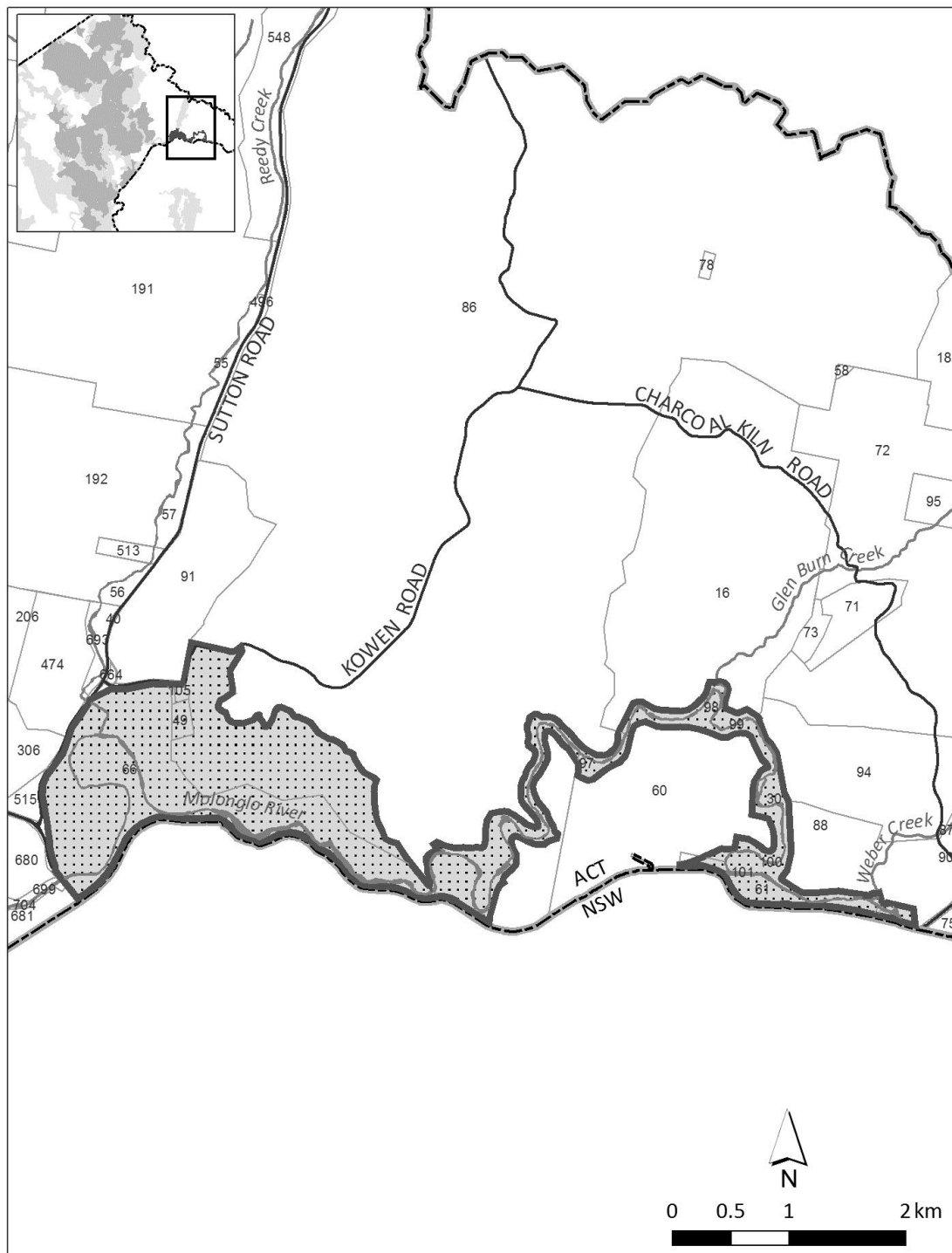
Nature Reserve (Pc)    Sealed Road    Watercourse

Note: Numbers refer to block ID numbers  
ACT Government Spatial Data from ACTMapi.act.gov.au  
© Australian Capital Territory



# Schedule 4 Molonglo Gorge Nature Reserve

(see sch 1 item 3)



**MAP : MOLONGLO GORGE NATURE RESERVE, KOWEN**

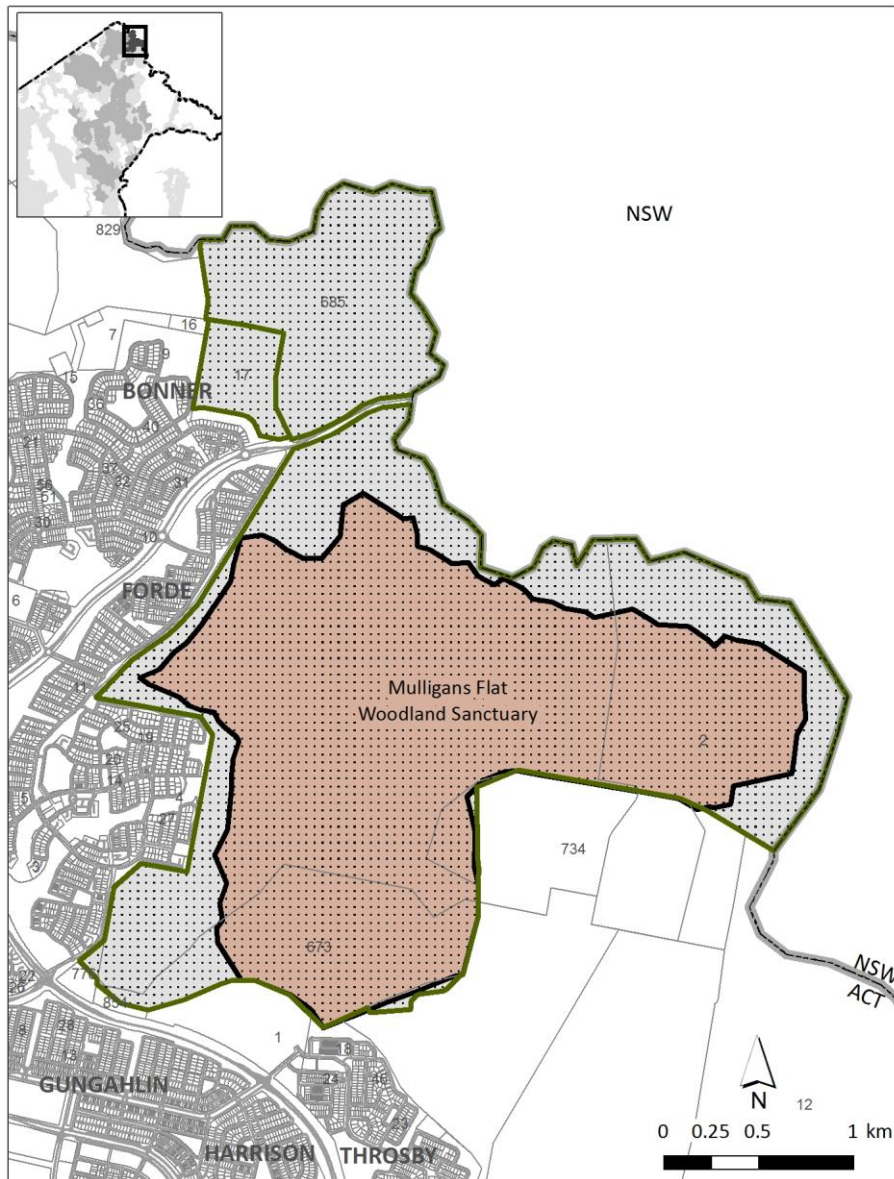
- Nature Reserve (Pc)
- Sealed Road
- ACT/NSW border
- River / Creek

Note: Numbers refer to block ID numbers  
 Interactive maps are available at [www.actmapl.act.gov.au](http://www.actmapl.act.gov.au)



# Schedule 5 Mulligans Flat Woodland Sanctuary

(see sch 1 item 4)



**MAP : MULLIGANS FLAT WOODLAND SANCTUARY**

Mulligans Flat Nature Reserve (Pc)
  Mulligans sanctuary fence
  Sealed Road

--- ACT/NSW border

Note: Numbers refer to block ID numbers

ACT Government Spatial Data from ACTMapi.act.gov.au  
 © Australian Capital Territory

