

Nature Conservation (Namadgi National Park and Bimberi Wilderness Area) Closed Reserve Declaration 2021 (No 1)

Notifiable instrument NI2021–547

made under the

Nature Conservation Act 2014, s 259 (Conservator may close reserve)

1 Name of instrument

This instrument is the *Nature Conservation (Namadgi National Park and Bimberi Wilderness Area) Closed Reserve Declaration 2021 (No 1)**.

2 Commencement

This instrument commences on the day that it is signed.

3 Declaration

I declare public access to Namadgi National Park and Bimberi Wilderness Area, identified in the map in schedule 1, is prohibited.

4 Exceptions

Section 3 does not apply to:

- (a) a conservation officer exercising a function under the Act within the closed reserves; or
- (b) a contractor or volunteer undertaking works within the closed reserves and engaged by the ACT Government to do so; or
- (c) a person conducting scientific research within the closed reserves who holds a nature conservation licence enabling the person to do so.

5 Revocation

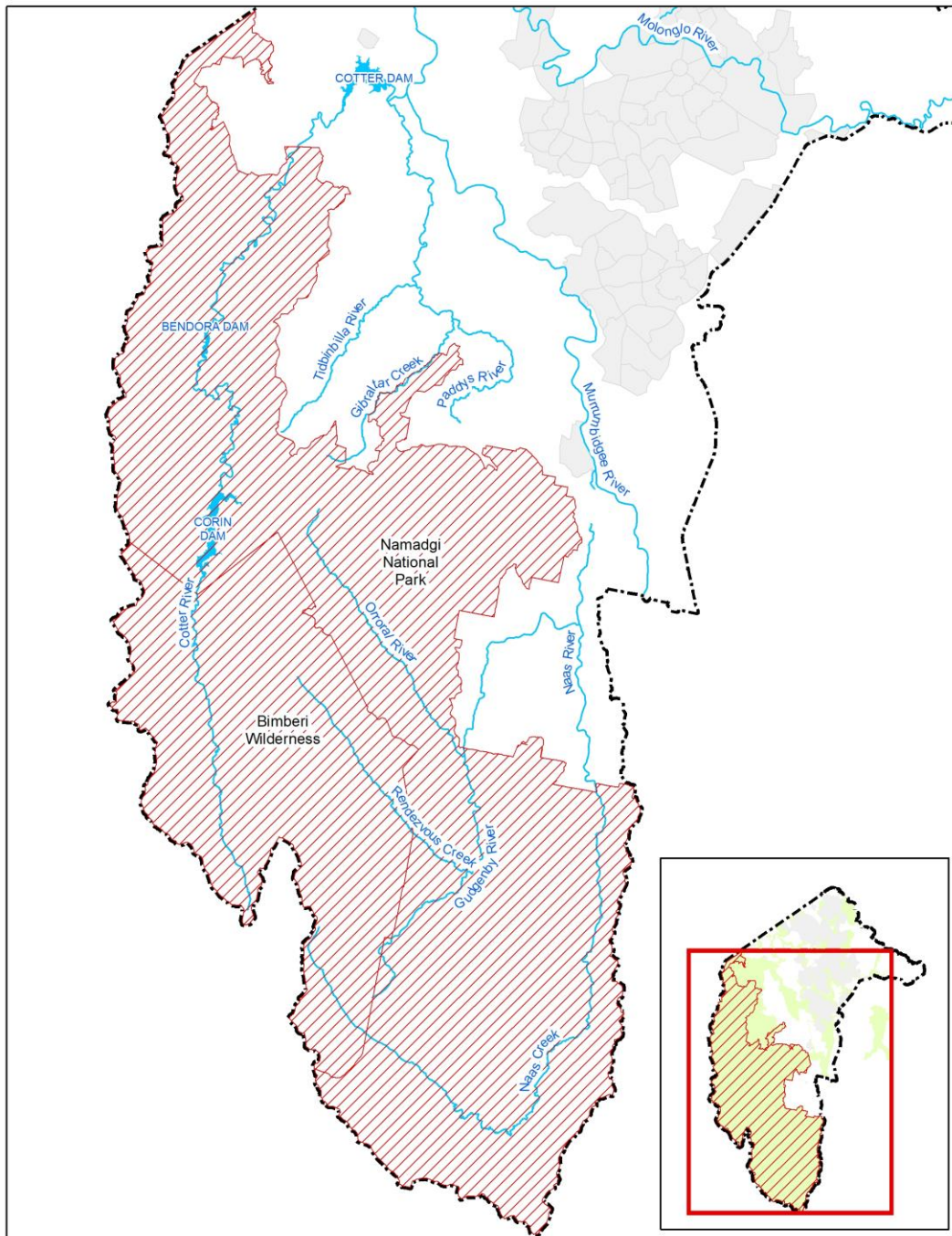
The *Nature Conservation (Closed Reserves—Namadgi National Park and Bimberi Wilderness Area) Declaration 2021 (No 2)* (NI2021-215) is revoked.

Michaela Watts
Delegate of the Conservator of Flora and Fauna
14 September 2021

*Name amended under Legislation Act, s 60

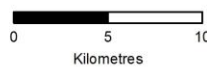
Schedule 1 **Namadgi National Park and Bimberi Wilderness Area**

(see s 3)



Legend

-  Closed Area
-  ACT Border



ACT Government 24/03/2021