

Heritage (Decision about Provisional Registration of Kingston Chambers, Kingston) Notice 2021

Notifiable instrument NI2021–672

made under the

Heritage Act 2004, s 34 (Notice of decision about provisional registration)

1 Name of instrument

This instrument is the *Heritage (Decision about Provisional Registration of Kingston Chambers, Kingston) Notice 2021*.

2 Decision about provisional registration

On 11 November 2021, the ACT Heritage Council (the *Heritage Council*) decided not to provisionally register Kingston Chambers, Block 13, Section 22, Kingston (the *Place*).

3 Description of the Place

The description of the Place is in the schedule.

4 Reasons for the decision

The Heritage Council is not satisfied on reasonable grounds that the Place is likely to have heritage significance as defined by section 10 of the *Heritage Act 2004*. A detailed statement of reasons, including an assessment against the heritage significance criteria, is provided in the schedule.

5 Date decision takes effect

The decision not to provisionally register the Place takes effect on 12 November 2021 (being the day after the Heritage Council made its decision in writing as set out in the schedule).

Edwina Jans
A/g Secretary (as delegate for)
ACT Heritage Council
11 November 2021



ACT Heritage Council

**STATEMENT OF REASONS
DECISION NOT TO PROVISIONALLY REGISTER
KINGSTON CHAMBERS
BLOCK 13 SECTION 22, KINGSTON
IN THE ACT HERITAGE REGISTER**

In accordance with s 32 of the *Heritage Act 2004*, the ACT Heritage Council has decided not to provisionally register Kingston Chambers, Kingston. This Statement of Reasons provides an assessment of Kingston Chambers, Kingston, and finds that the place does not meet any of the criteria under s 10 of the *Heritage Act 2004*.

This statement refers to the location of the place as required in s 34 (5) (b) (ii) of the *Heritage Act 2004*.

LOCATION OF THE PLACE

Kingston Chambers, 86 Giles Street, Block 13 Section 22, Kingston.

This section refers to the description of the place as required in s 34 (5) (b) (iii) of the *Heritage Act 2004*. The boundary of the place and extent of features listed below is illustrated at Image 1.

DESCRIPTION OF THE PLACE

Kingston Chambers, consisting of the following attributes:

- The original 1987 two storey brick building and its setting and landscaping on Block 13, Section 22, Kingston.

This statement refers to the Council's reasons for its decision as required in s 34 (5) (b) (iv) of the *Heritage Act 2004*.

REASONS FOR DECISION

The Council is not satisfied on reasonable grounds that the place is likely to have heritage significance as defined by s 10 of the *Heritage Act 2004*.

This statement refers to the Council's assessment of the place against the heritage significance criteria as a part of its reasons for its decision as required in s 34 (5) (b) (v) of the *Heritage Act 2004*.

ASSESSMENT AGAINST THE HERITAGE SIGNIFICANCE CRITERIA

The Council's assessment against the criteria specified in s 10 of the *Heritage Act 2004* is as follows.

In assessing the heritage significance of Kingston Chambers, Kingston, the Council considered:

- the original nomination and documentary evidence supplied by the nominator;
- the Council's *Heritage Assessment Policy* (March 2018);
- information provided by a site inspection on 18 November 2020 by ACT Heritage; and
- the report by ACT Heritage titled, *Background Information Kingston Chambers*, November 2021, containing photographs and information on history, description, condition and integrity.

Pursuant to s 10 of the *Heritage Act 2004*, a place or object has heritage significance if it satisfies one or more of the following criteria. Future research may alter the findings of this assessment.

(a) importance to the course or pattern of the ACT's cultural or natural history;

The Council has assessed Kingston Chambers against criterion (a) and is not satisfied that the place meets this criterion.

Kingston Chambers, designed in 1986 with construction completed in 1987, is close to the Kingston Shopping Precinct and the Old Kingston Post Office. The place has been used by various professional offices and organisations, such as the Lone Fathers Association and various medical professions. It is a part of the changing landscape of the area but is not linked to any specific events or features that had a profound effect on what happened to the area and as such there is no evidence to suggest that it has had an important part to play in the course or pattern of the ACT's cultural history.

(b) has uncommon, rare or endangered aspects of the ACT's cultural or natural history;

The Council has assessed Kingston Chambers against criterion (b) and is not satisfied that the place meets this criterion.

Kingston Chambers is a modest two storey brick office building. Its simple material and colour palette complement its modern Georgian style symmetry that is designed to fit in with the surrounding historic character of old Kingston. It is a sensitive design for a modern facility in an older suburb, however there is no evidence to suggest that it is uncommon, rare or endangered.

(c) potential to yield important information that will contribute to an understanding of the ACT's cultural or natural history;

The Council has assessed Kingston Chambers against criterion (c) and is not satisfied that the place meets this criterion.

As a relatively modern and well documented building, Kingston Chambers is unlikely to contain important information that cannot be obtained from sources other than its standing physical material. As such, the Council does not think that it has the potential to yield important information that will contribute to an understanding of the ACT's cultural history.

(d) importance in demonstrating the principal characteristics of a class of cultural or natural places or objects;

The Council has assessed Kingston Chambers against criterion (d) and is not satisfied that the place meets this criterion.

Kingston Chambers is a modern two storey brick office building that references a Georgian architectural style. The design appears to be an attempt to meld in with the historical character of the surrounding area. As a class of place, it most appropriately classifies as a small modern office block. It has an efficient distribution of space from a single entrance point for four separate professional or medical offices/suites and an unassuming façade with repeated fenestration with construction consisting of common materials and methods in a generous setting with ample parking. It is effective at what it does, but there is nothing to indicate that it is important in demonstrating any of the principal characteristics of the class of place.

(e) importance in exhibiting particular aesthetic characteristics valued by the ACT community or a cultural group in the ACT;

The Council has assessed Kingston Chambers against criterion (e) and is not satisfied that the place meets this criterion.

As noted in criterion (d), Kingston Chambers is a small modern office that references Georgian design principles and is otherwise unassuming in its appearance. While people living nearby may appreciate this aesthetic characteristic, this cannot be applied to the wider community or a cultural group in the ACT as intended under this criterion.

For the purposes of assessment against this criterion it is important to note that the ACT *Heritage Assessment Policy* (2018) determines that:

- professional groups and special interest groups do not constitute a community or cultural group for the purposes of this criterion. Common expertise or interest is not sufficient by itself to define a community or cultural group;
- ‘a cultural group’ is defined as ‘all the people of a specific locality or country’ plus ‘a particular locality, considered together with its inhabitants’; and
- for the purposes of the *Heritage Act 2004*, ‘the community’ is defined as ‘the ACT community’ or ‘the community of the ACT’.

(f) importance in demonstrating a high degree of creative or technical achievement for a particular period;

The Council has assessed Kingston Chambers against criterion (f) and is not satisfied that the place meets this criterion.

While Kingston Chambers has been designed with a nod to historicism its design does not demonstrate a high degree of creative or technical achievement for the 1980s, rather it is unassuming and is appropriate for the standards of its day.

(g) has a strong or special association with the ACT community, or a cultural group in the ACT for social, cultural or spiritual reasons;

The Council has assessed Kingston Chambers against criterion (g) and is not satisfied that the place meets this criterion.

Kingston Chambers has housed several business, doctors and organisations, however they have simply used it as a place of business and there is no indication that the associations between them at this location has a strong or special association with the ACT community or a cultural group in the ACT (noting the definitions under criterion (e)).

(h) has a special association with the life or work of a person, or people, important to the history of the ACT.

The Council has assessed Kingston Chambers against criterion (h) and is not satisfied that the place meets this criterion.

The place has been used by various professional offices and organisations, such as the Lone Fathers Association and various medical professions; however, their location in the building cannot be demonstrated to be any more special than any other location. As such, it is not possible to say that there is a special association with the life or work of a person, or people, regardless of their importance to the history of the ACT. Additionally, the design by Cameron Chisholm & Nicol, is not of the same import as any of their more renowned commissions, such as The Carillon, and there is no indication that the place had a special association to the firm.

SITE PLAN

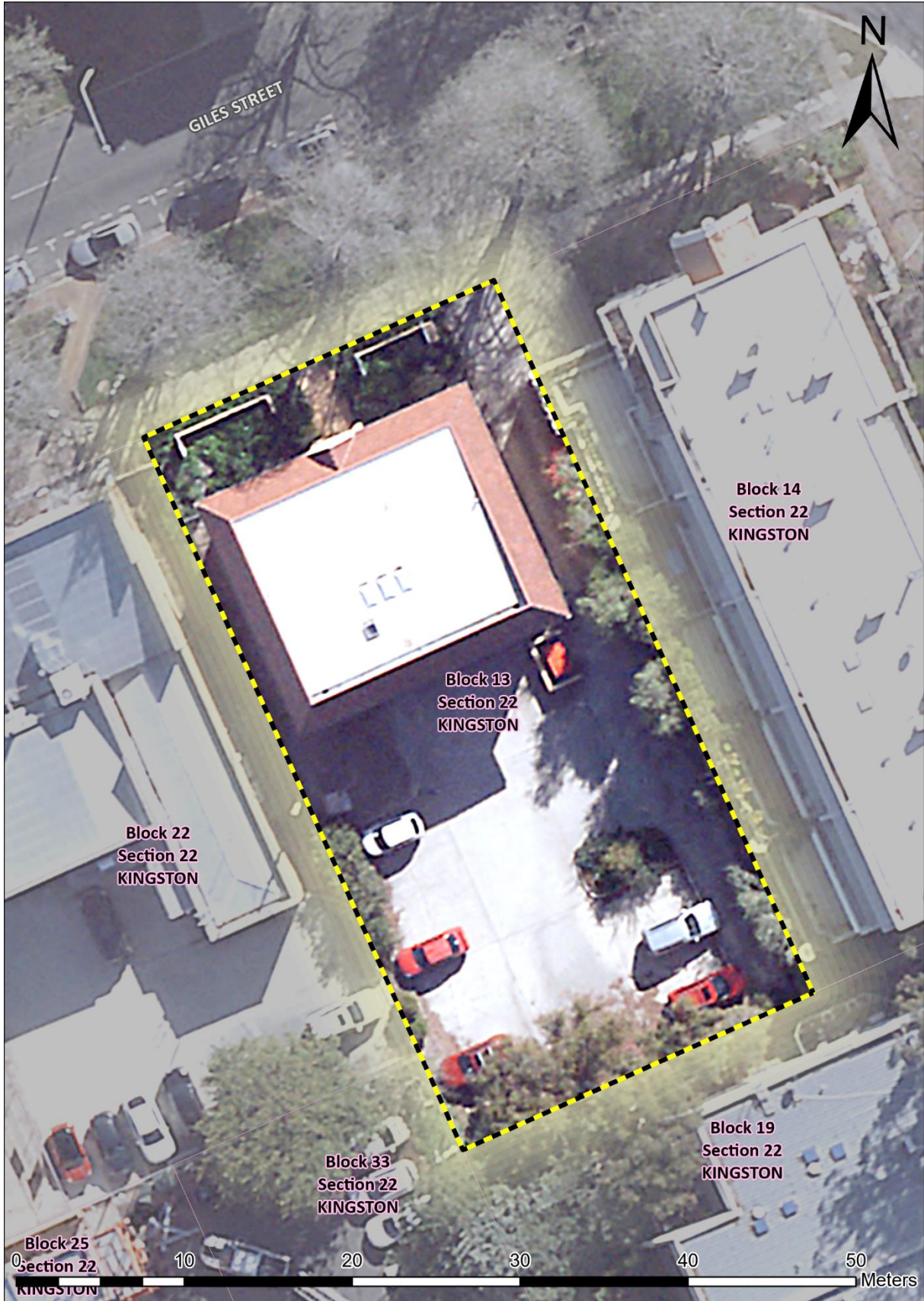


Image 1 Kingston Chambers site boundary