

Nature Conservation (Closed Reserves) Declaration 2022 (No 1)

Notifiable instrument NI2022–250

made under the

Nature Conservation Act 2014, s 259 (Conservator may close reserve)

1 Name of instrument

This instrument is the *Nature Conservation (Closed Reserves) Declaration 2022 (No 1)*.

2 Commencement

This instrument commences on 23 May 2022.

3 Declaration

- (1) I declare that public access to those parts of Bullen Range Nature Reserve indicated in the map at schedule 1 is prohibited.
- (2) I declare that public access to those parts of Gigerline Nature Reserve indicated in the map at schedule 2 is prohibited.
- (3) I declare that public access to those parts of Rob Roy Range Nature Reserve indicated in the map at schedule 3 is prohibited.
- (4) I declare that public access to those parts of Molonglo River Reserve indicated in the map at schedule 4 is prohibited.

4 Exceptions

Section 3 does not apply to:

- (a) a conservation officer exercising a function under the Act within the areas declared under section 3 (*closed reserves*); or
- (b) any person accompanied by a conservation officer; or

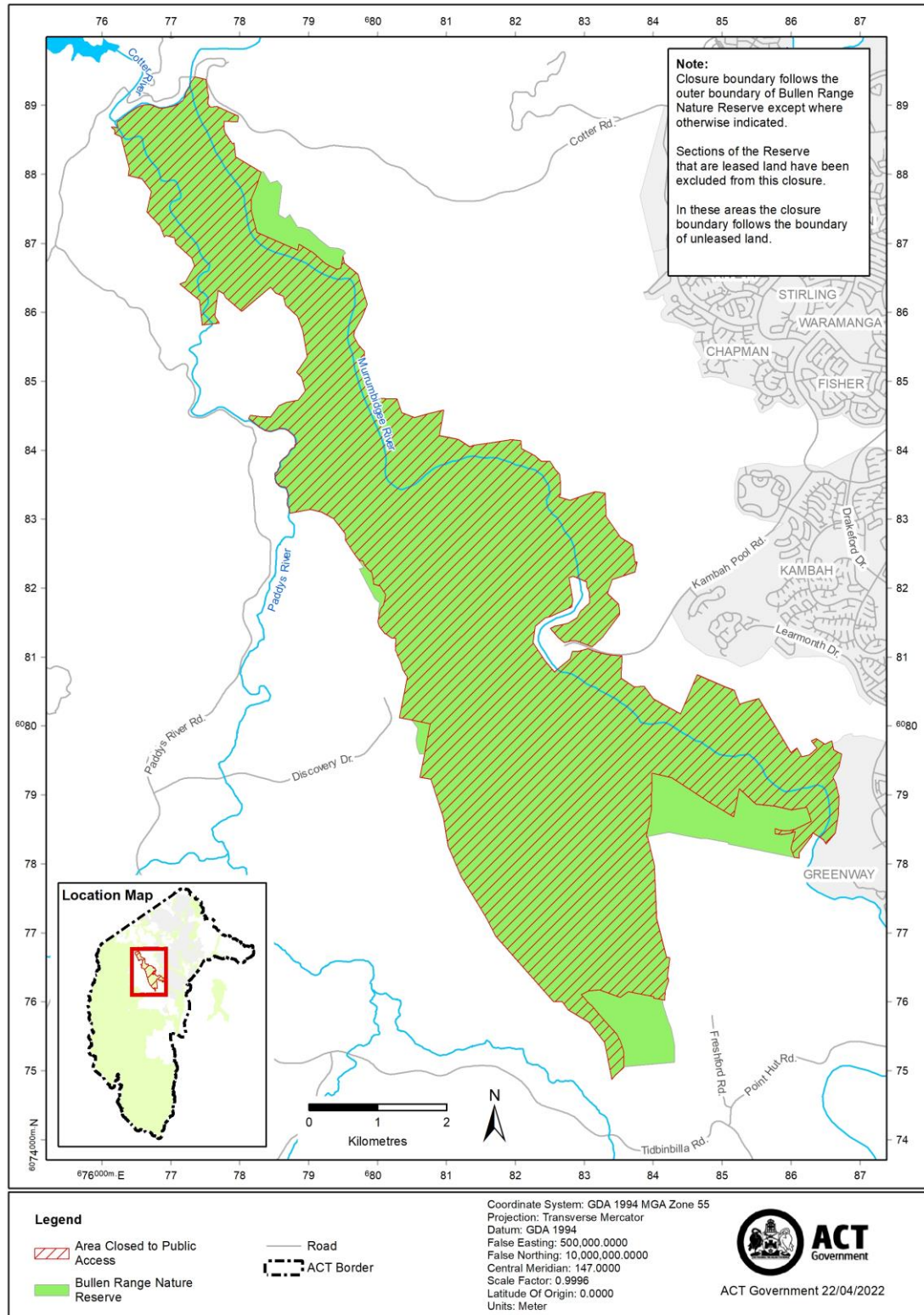
(c) a contractor undertaking works within the closed reserves and engaged by the ACT Government to do so.

Ian Walker
Conservator of Flora and Fauna

5 May 2022

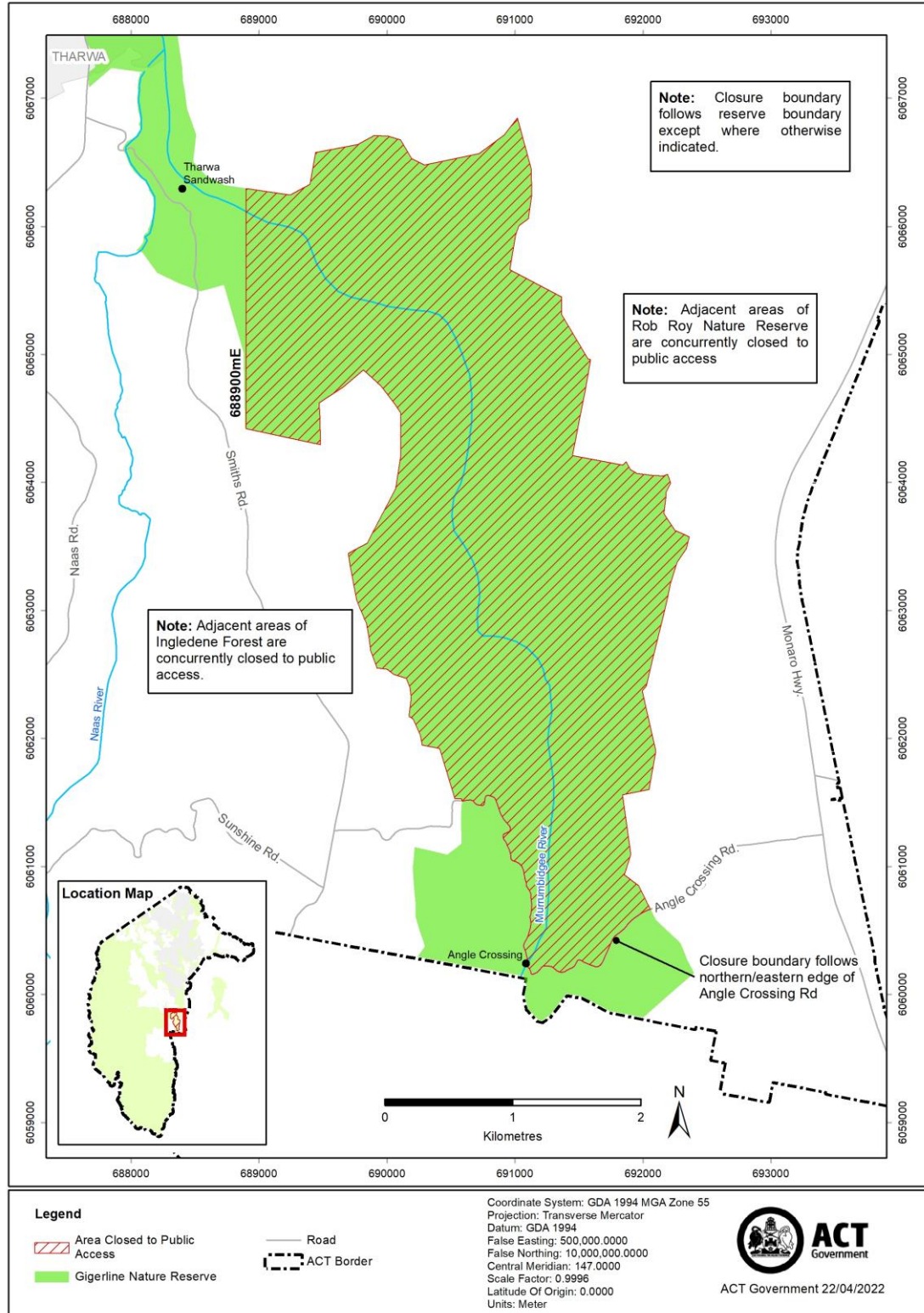
Schedule 1 Area of Bullen Range Nature Reserve closed to public access

(see s 3)



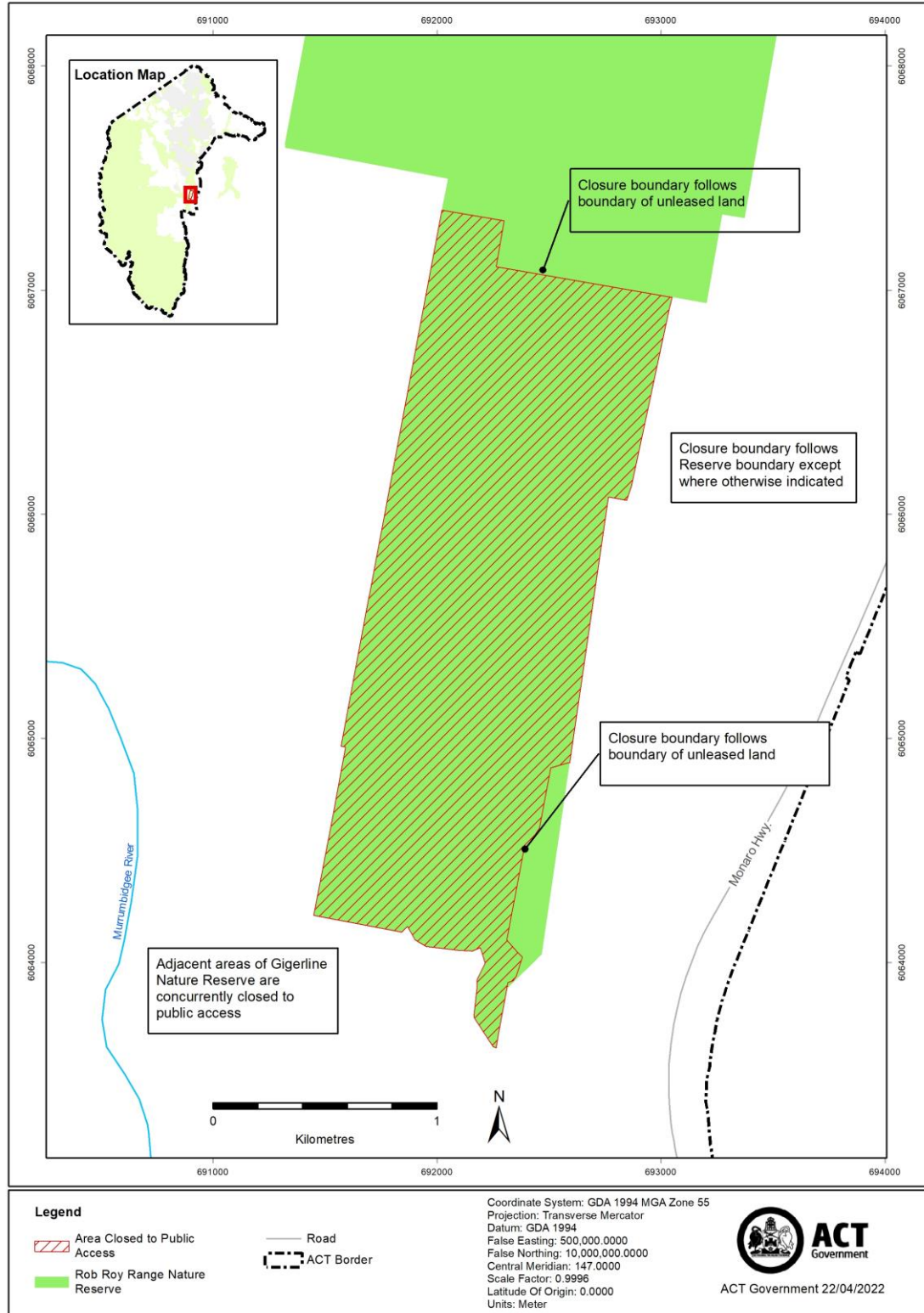
Schedule 2 Area of Gigerline Nature Reserve closed to public access

(see s 3)



Schedule 3 Area of Rob Roy Range Nature Reserve closed to public access

(see s 3)



Schedule 4 Area of Molonglo River Reserve closed to public access

(see s 3)

