



# Part B

# The Territory Plan

# Map

## Table of Contents

Table of Contents.....	2
B.1 Maps .....	2
B.2 Overlays .....	3
Territory Plan Map - Australian Capital Territory.....	5
Territory Plan Map – Gungahlin and Hall.....	6
Territory Plan Map – Belconnen .....	7
Territory Plan Map – Inner North and City .....	8
Territory Plan Map – Inner South .....	9
Territory Plan Map – Molonglo Valley.....	10
Territory Plan Map – Weston Creek .....	11
Territory Plan Map – Woden .....	12
Territory Plan Map – Tuggeranong, Hume and Tharwa.....	13
Territory Plan Map – East Canberra.....	14
Districts referred to in Territory Plan.....	15



## B.1 Maps

Maps forming part of the Plan identify all land covered by the Plan. Maps graphically depict the spatial elements of the Plan, as shown on the legend, and support the written policy.

Each parcel of land is coded for the zone that applies and any overlays that are applicable. The maps also include the district in which a parcel of land is located. The cadastral database over which the maps are normally printed does not form part of the Plan. It is to aid interpretation of the map and shown for information only.

ACTMAPi is a mapping tool available on the Territory Planning Authority's website to make it easier to identify a parcel of land and determine the zone that applies. ACTMAPi is not a statutory map and does not replace the Territory Plan Map.

## B.2 Overlays

Overlays identify land that has additional considerations applying to it.

### *Commonwealth Requirements*

Some parcels of land in the ACT are required to consider nominated Commonwealth requirements. This land is enclosed by a blue border and identified by the following letter:

*S – Special Requirements of the National Capital Plan* – land where special requirements apply under the National Capital Plan

*U – National Land proposed for urban development* – land that is zoned non-urban in the Territory Plan but identified for urban development in the National Capital Plan

*A – National Land subject to a master plan under applicable Commonwealth legislation* – land that is used for airport (not included in the National Capital Plan or Territory Plan)

Note: The areas subject to special requirement provisions in the National Capital Plan are shown for information purposes only and do not form part of the Territory Plan.

### *Future Urban Areas*

Land indicated on the map enclosed by a blue border within which the code 'FUA' appears is future urban land. Identification of a FUA means that area of land has been earmarked for future development.

The development of FUAs can be guided by the principles and policies in the District Strategies and are required to comply with the relevant area specific assessment outcomes and assessment requirements provided in the District Policies. The Subdivision Policy also sets the assessment outcomes and requirements that development in FUAs is typically subject to.

### *Public Land*

The purposes for which public land is reserved is indicated on the Map by a houndstooth border and by a map code as indicated below, (except for land zoned Urban Open Space – see note below):

Pa - a wilderness area

Pb - a national park

Pc - a nature reserve

Pd - a special purpose reserve

Pe - an urban open space\*

Pf - a cemetery or burial ground

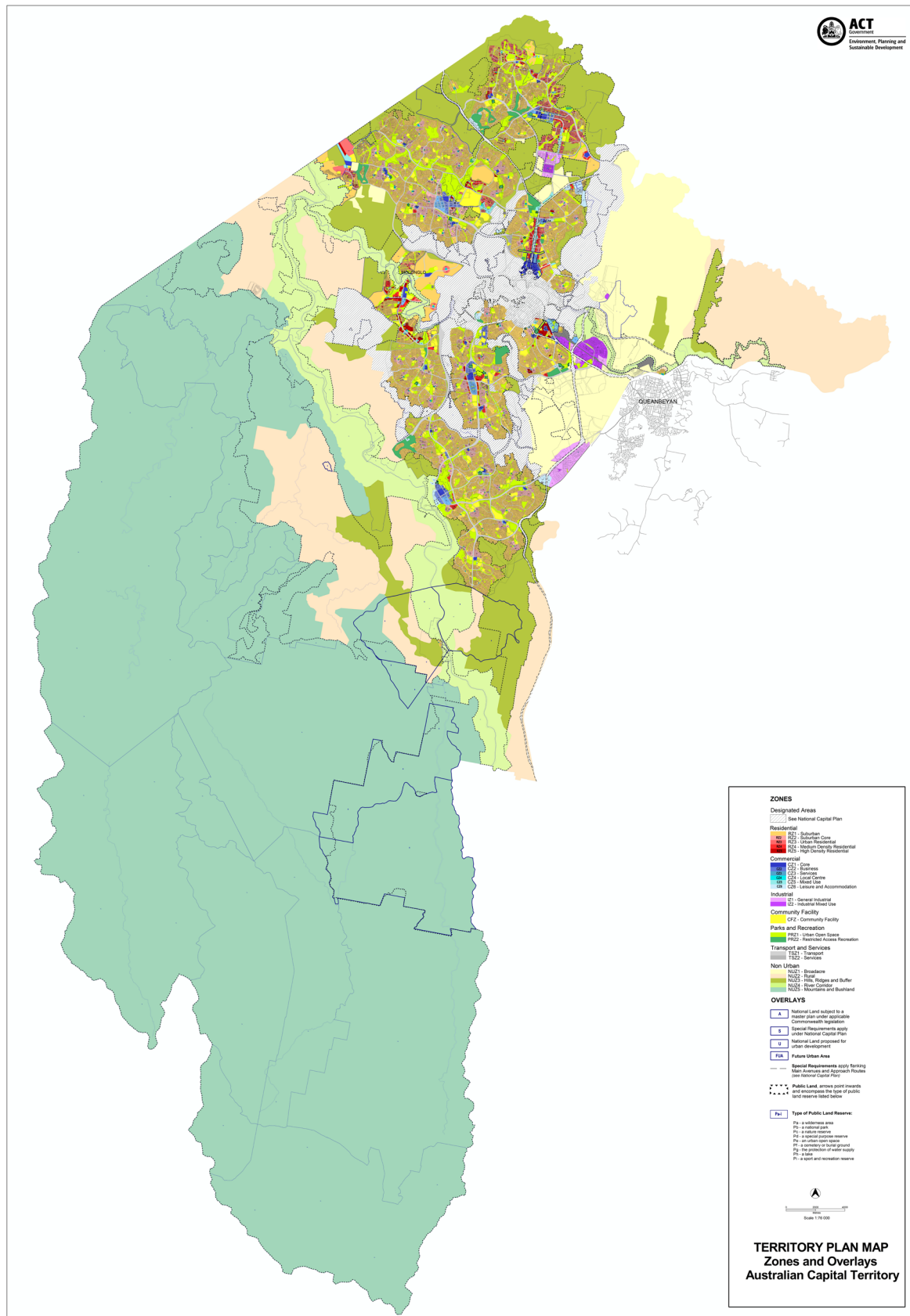
Pg - a water supply catchment

Ph - a lake

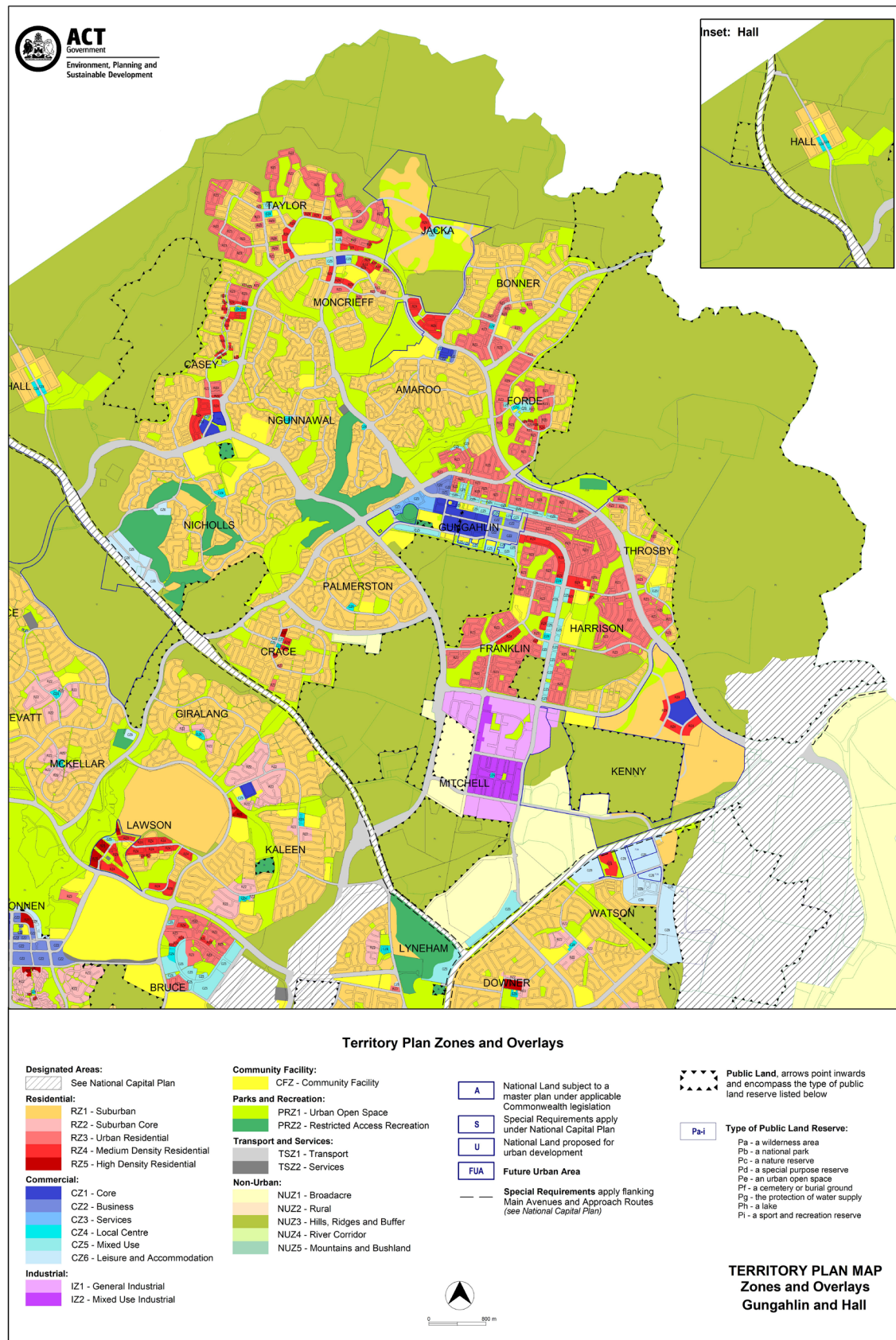
Pi - a sport and recreation reserve

\* Due to the number and small size of many of the land parcels, the urban open space public land category is not defined by enclosing symbols on the Map in the same manner as the other categories. All Territory land shown zoned Urban Open Space on the Map is reserved as public land in the Pe category unless specifically excluded or covered by another public land category.

# Territory Plan Map - Australian Capital Territory

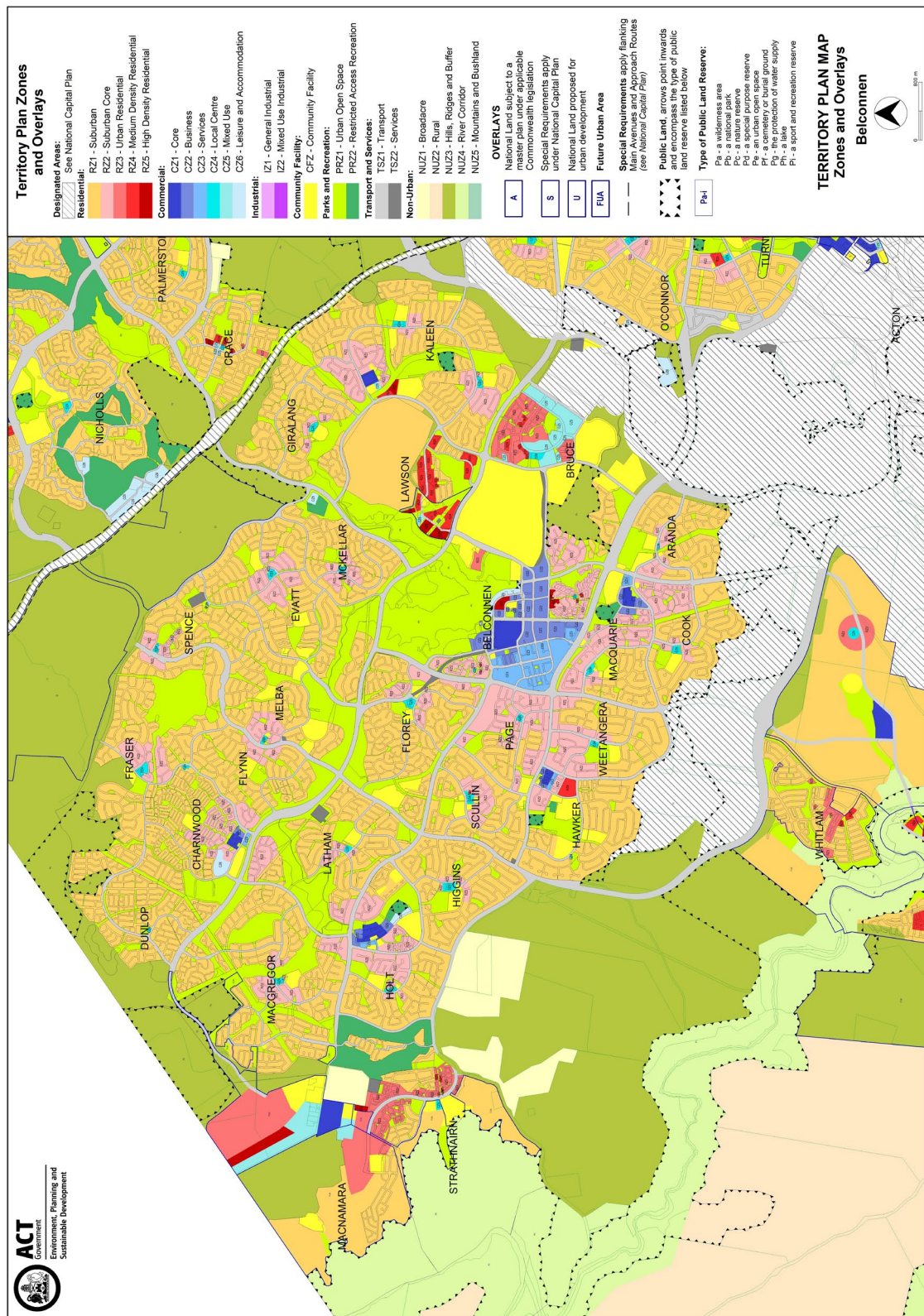


# Territory Plan Map – Gungahlin and Hall



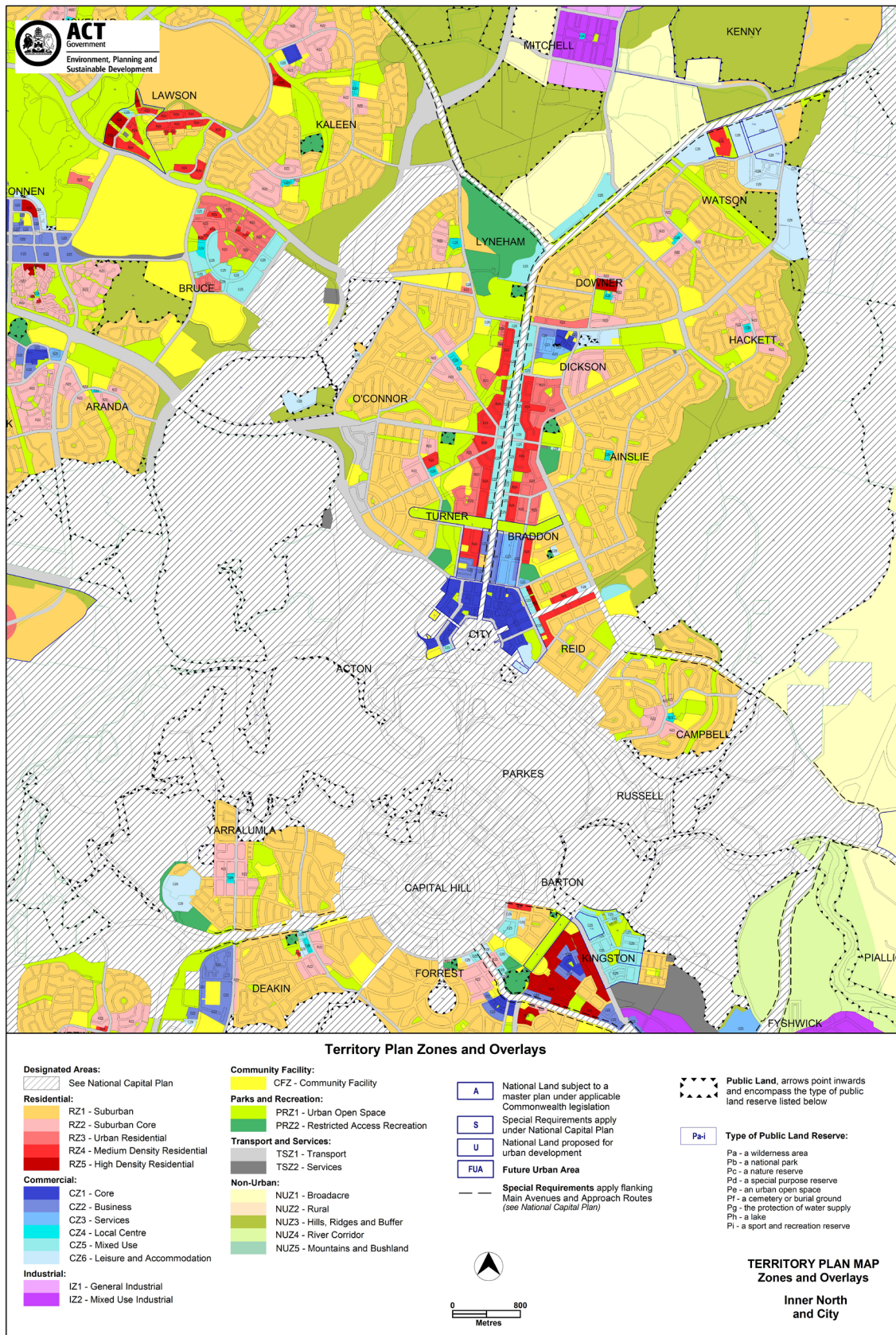


# Territory Plan Map – Belconnen



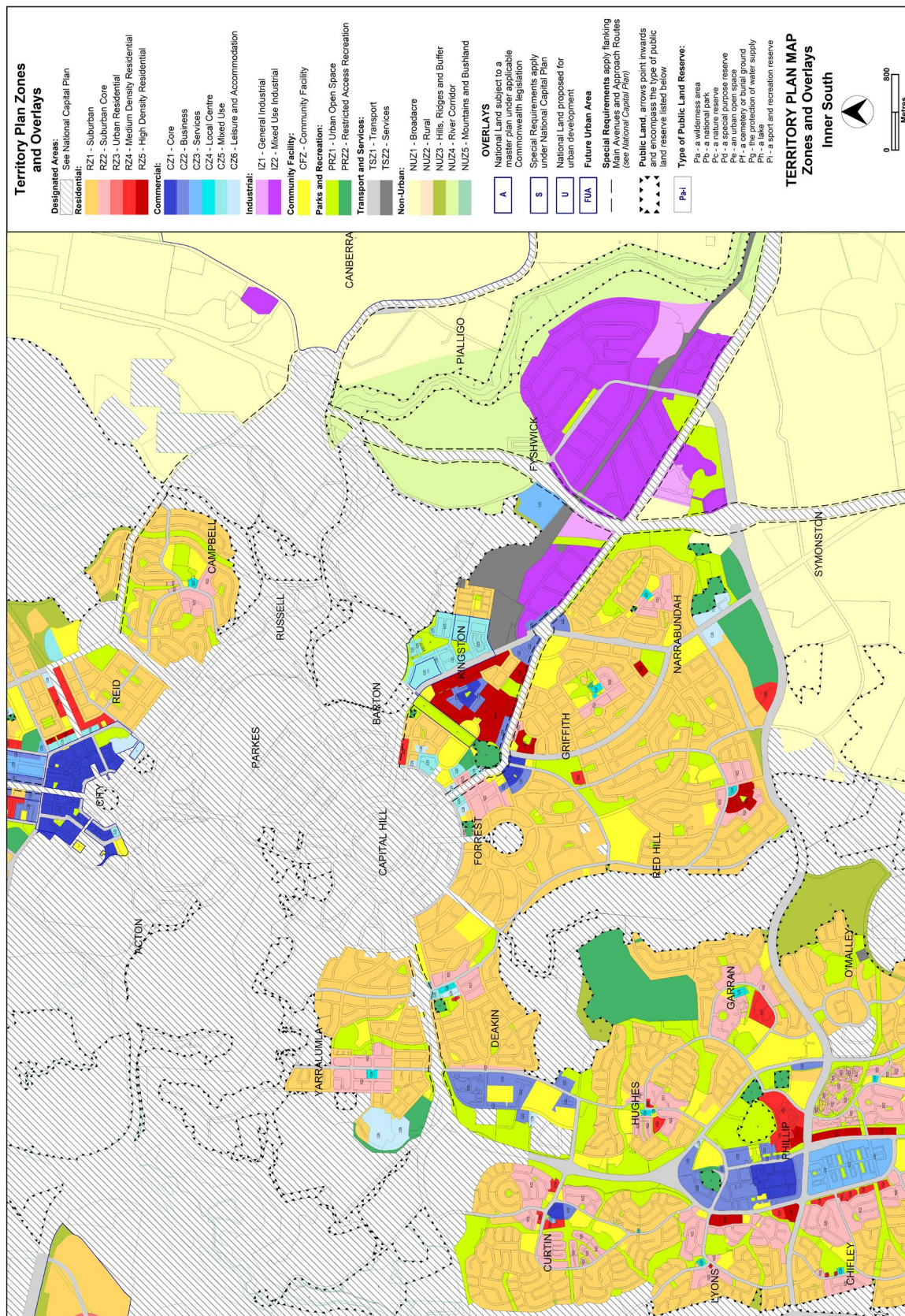


# Territory Plan Map – Inner North and City



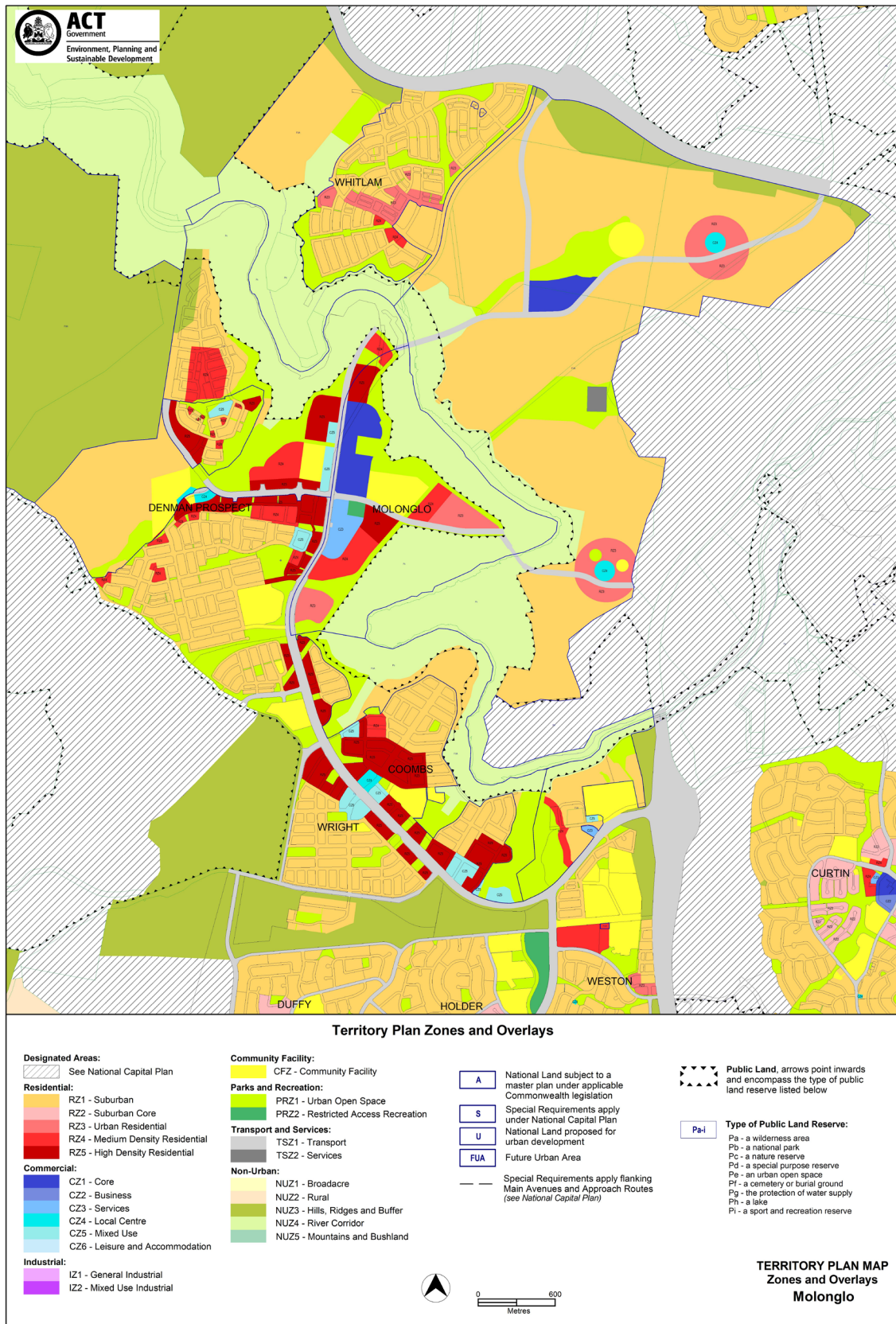


# Territory Plan Map – Inner South



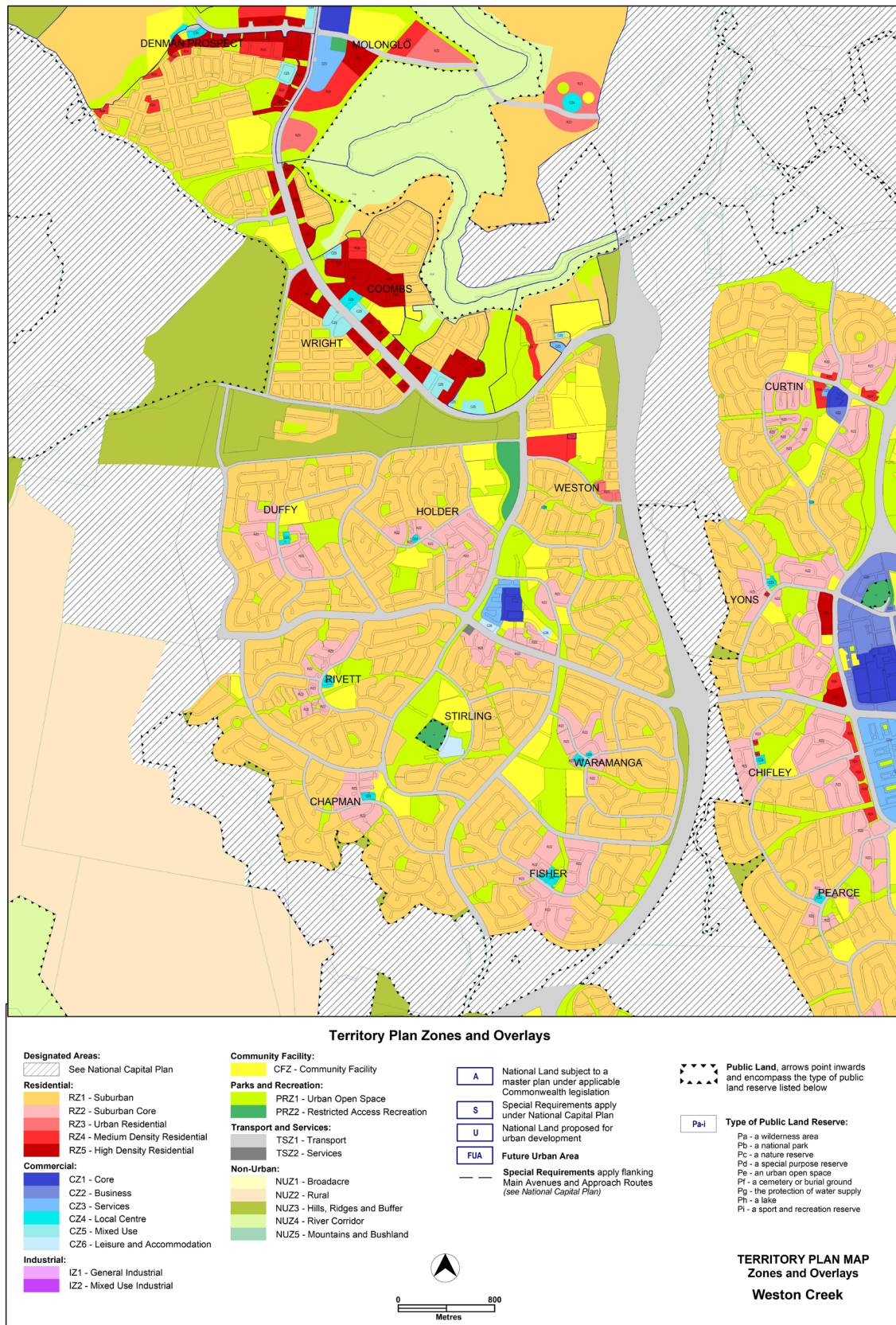


# Territory Plan Map – Molonglo Valley



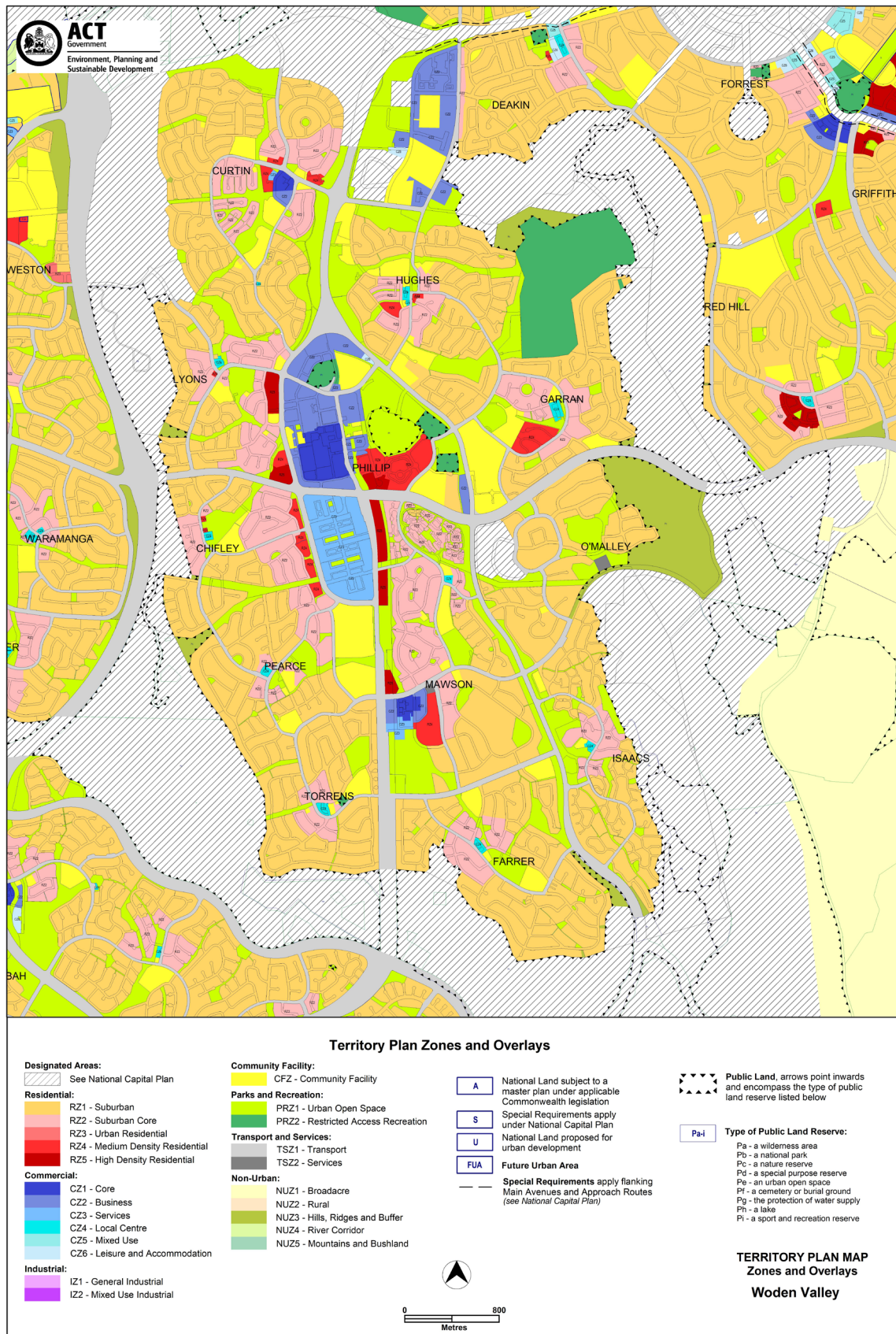


# Territory Plan Map – Weston Creek



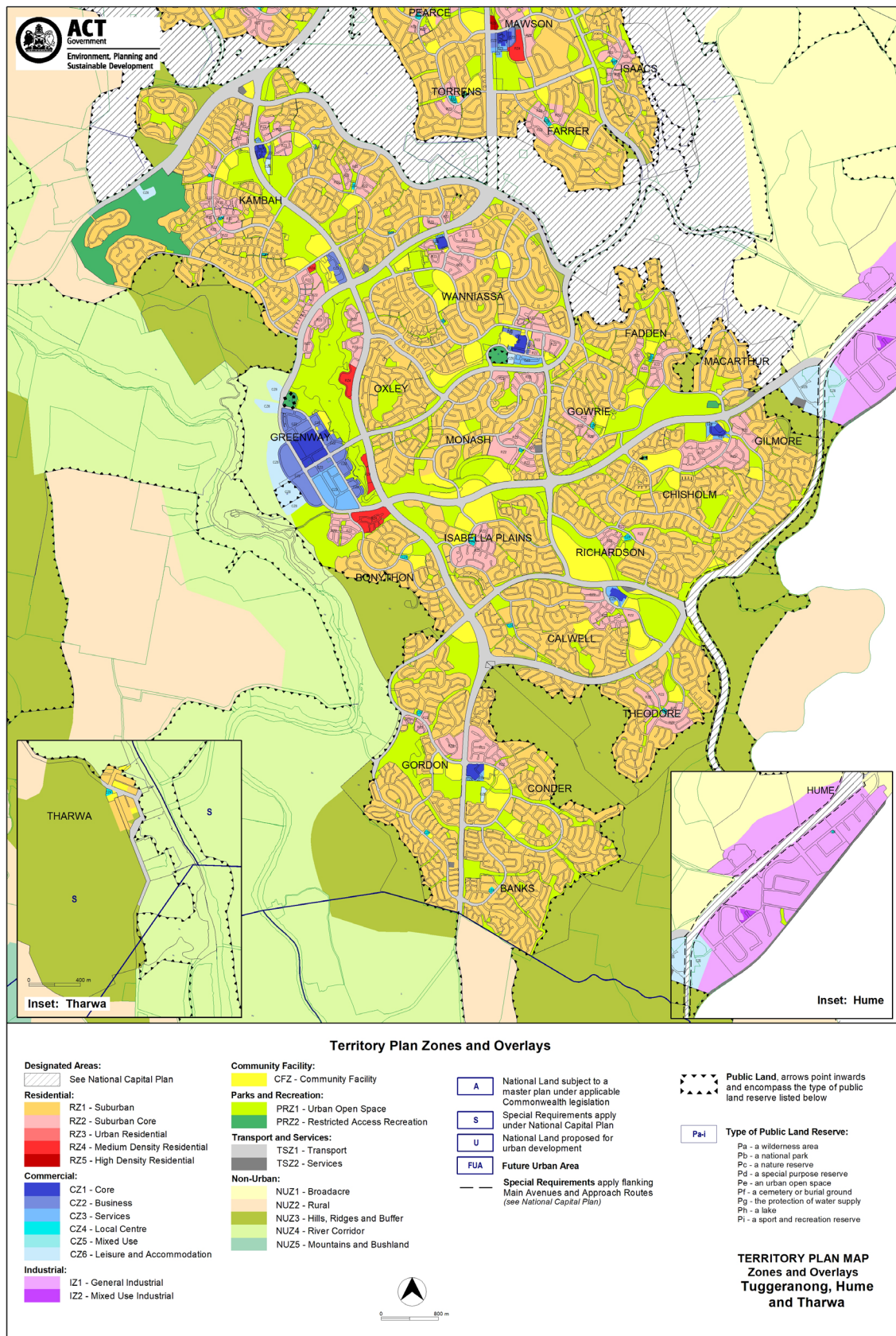


# Territory Plan Map – Woden

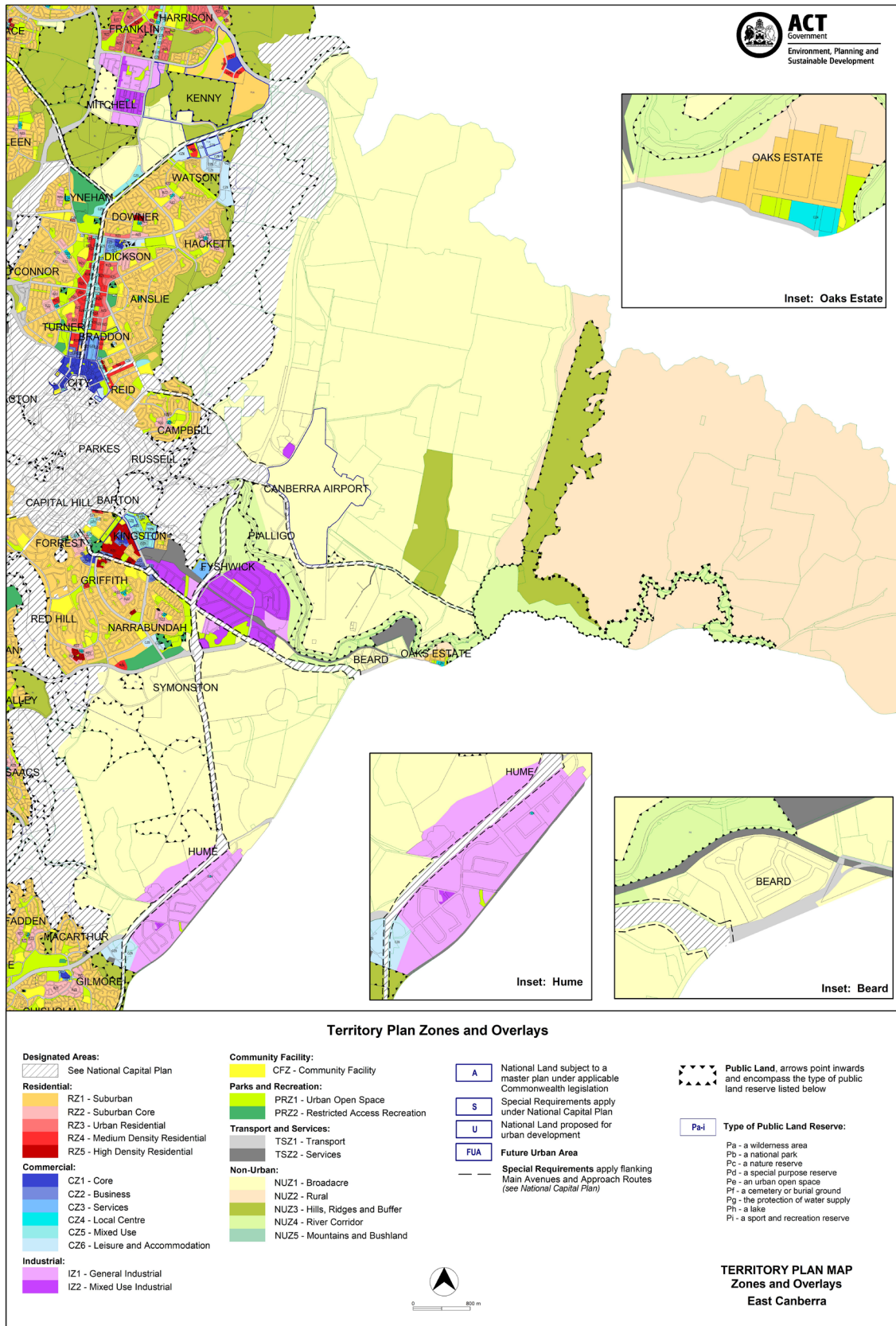




# Territory Plan Map – Tuggeranong, Hume and Tharwa



# Territory Plan Map – East Canberra



## Districts referred to in Territory Plan

