

Nature Conservation (Closed Reserves) Declaration 2023 (No 4)

Notifiable instrument NI2023–567

made under the

Nature Conservation Act 2014, s 259 (Conservator may close reserve)

1 Name of instrument

This instrument is the *Nature Conservation (Closed Reserves) Declaration 2023 (No 4)*.

2 Commencement

This instrument commences on 16 September 2023.

3 Declaration

I declare that public access to:

- (a) those parts of Bullen Range Nature Reserve indicated in the map at schedule 1; and
- (b) those parts of Gigerline Nature Reserve indicated in the map at schedule 2; and
- (c) those parts of Rob Roy Range Nature Reserve indicated in the map at schedule 3; and
- (d) those parts of Sherwood Forest Special Purpose Reserve indicated in the map at schedule 4; and
- (e) those parts of Stony Creek Nature Reserve indicated in the map at schedule 5; and
- (f) those parts of Swamp Creek Nature Reserve indicated in the map at schedule 6; and
- (g) those parts of Tidbinbilla “nature reserve” (national park and special purpose reserve) indicated in the map at schedule 7,

is prohibited during the closure periods specified at schedule 8.

4 Exceptions

Section 3 does not apply to:

- (a) a conservation officer exercising a function under the Act; or
- (b) a person accompanied by a conservation officer exercising a function under the Act; or
- (c) a contractor undertaking works within the closed reserves and engaged by the ACT Government to do so.

5 Expiry

This instrument expires on 26 September 2023.

6 Definitions

closure period, for a reserve specified in column 1 of schedule 8, means the period:

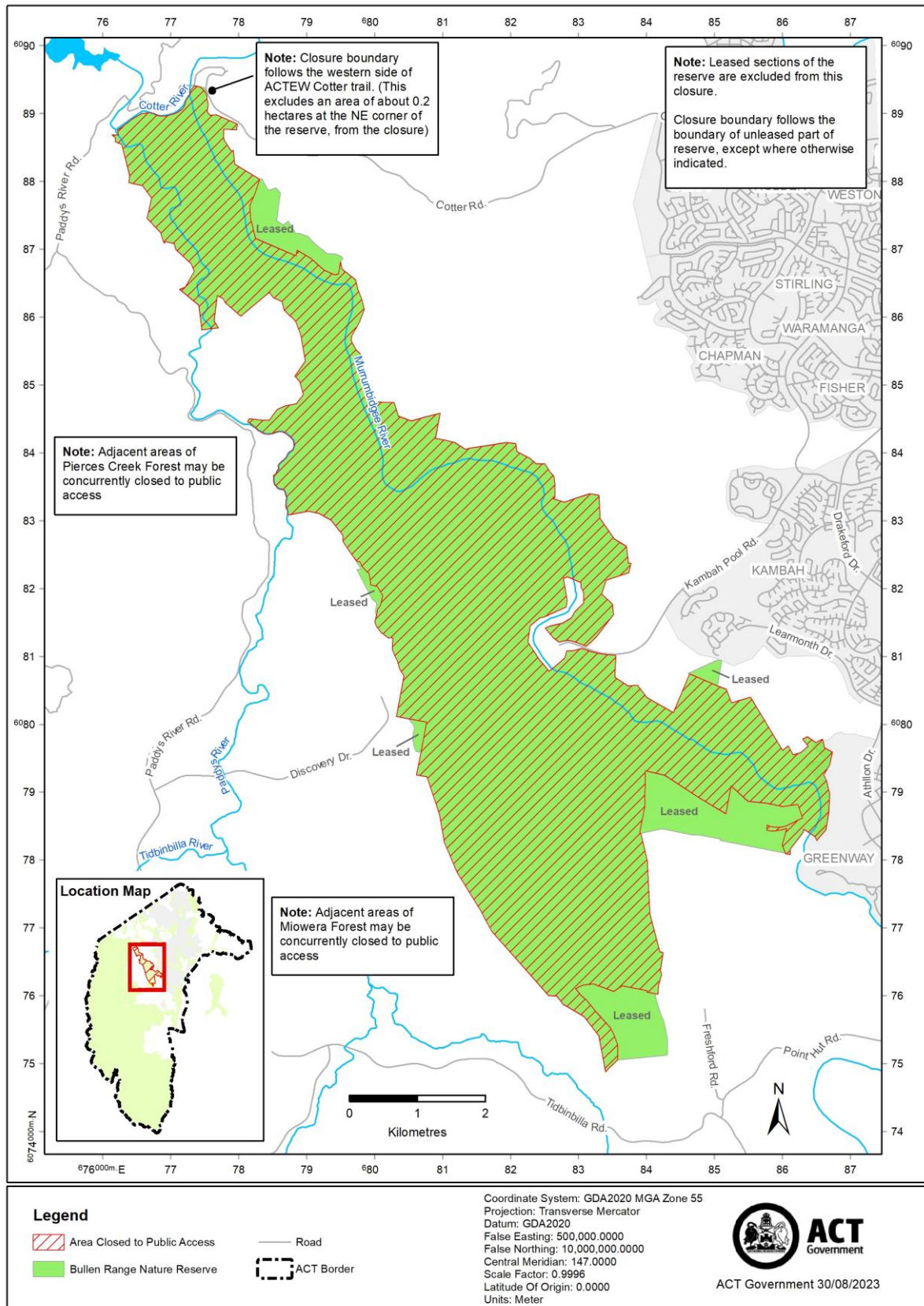
- (a) commencing on the corresponding date (*start date*) specified in column 2 of schedule 8; and
- (b) ending on the corresponding date (*end date*) specified in column 3 of schedule 8.

Bren Burkevics
Conservator of Flora and Fauna

8 September 2023

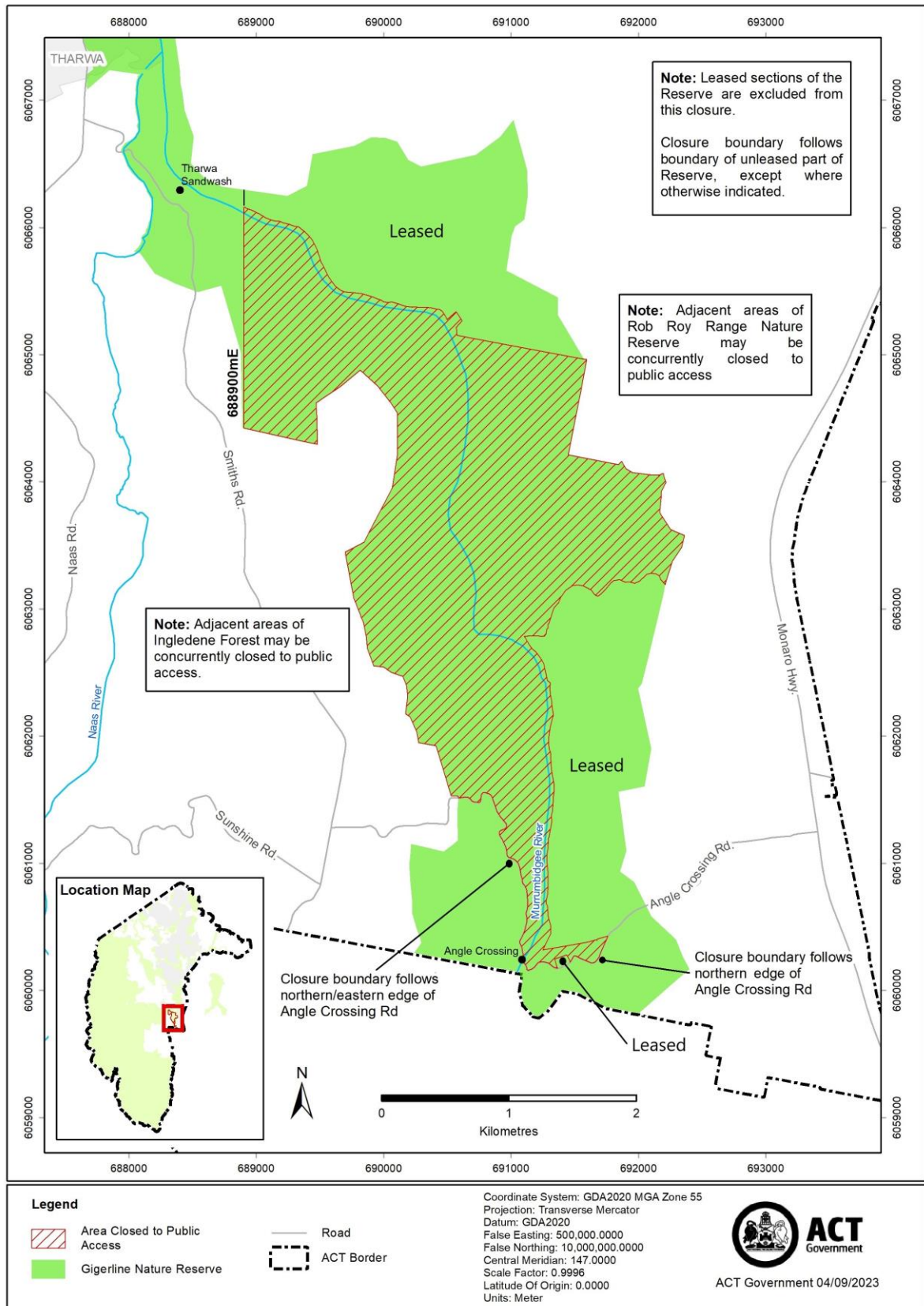
Schedule 1 Area of Bullen Range Nature Reserve closed to public access

(see s 3)



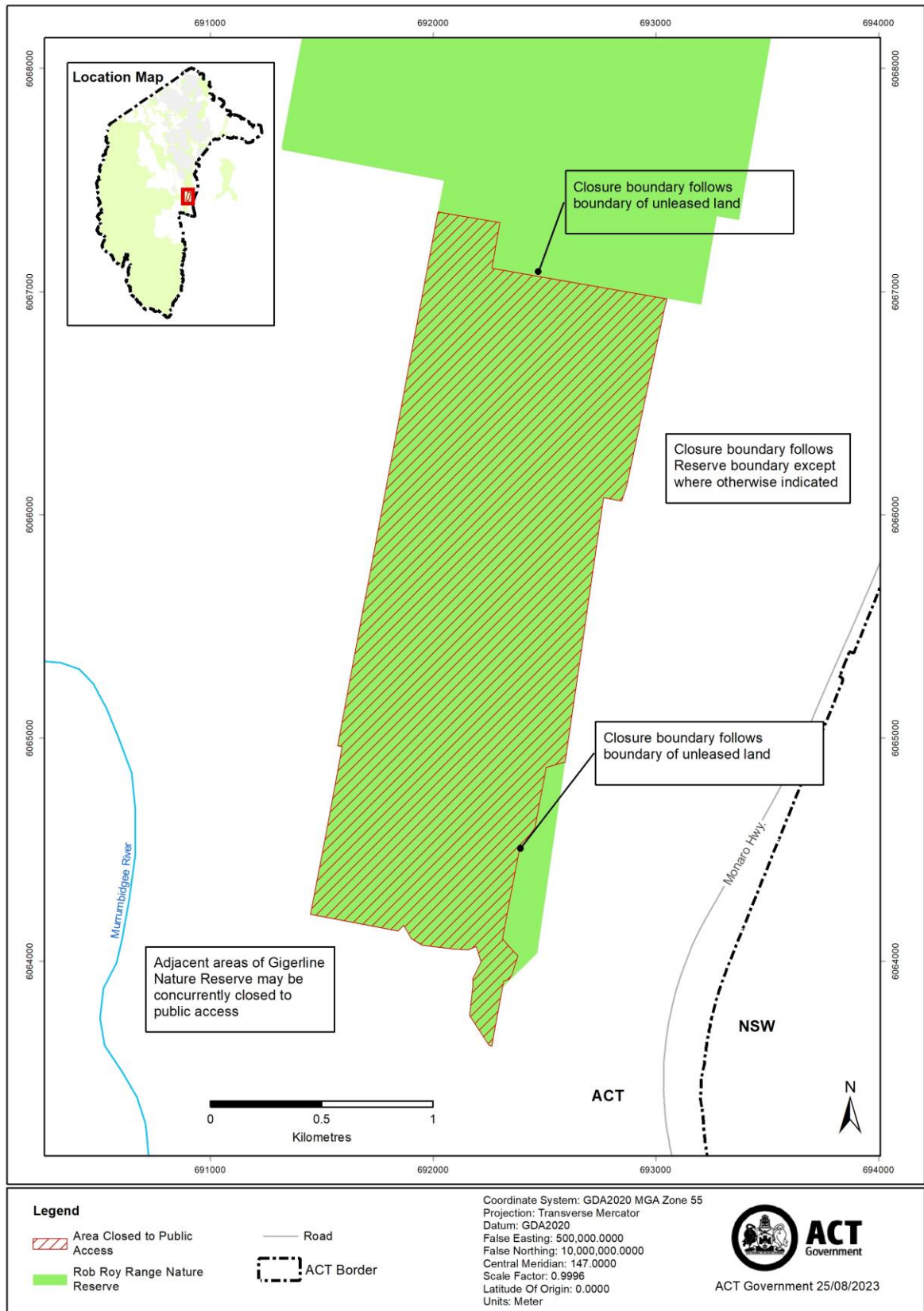
Schedule 2 Area of Gigerline Nature Reserve closed to public access

(see s 3)



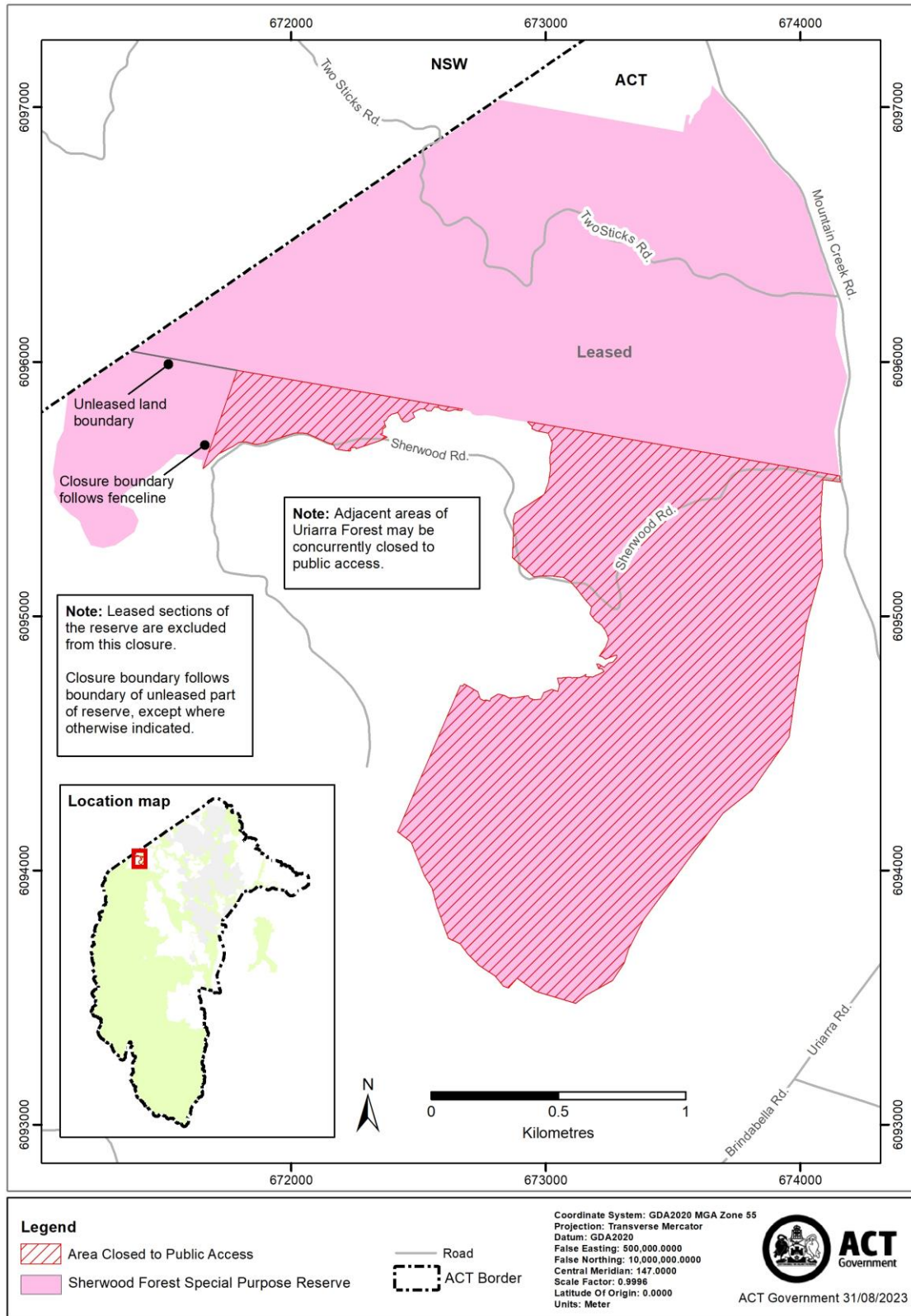
Schedule 3 Area of Rob Roy Range Nature Reserve closed to public access

(see s 3)



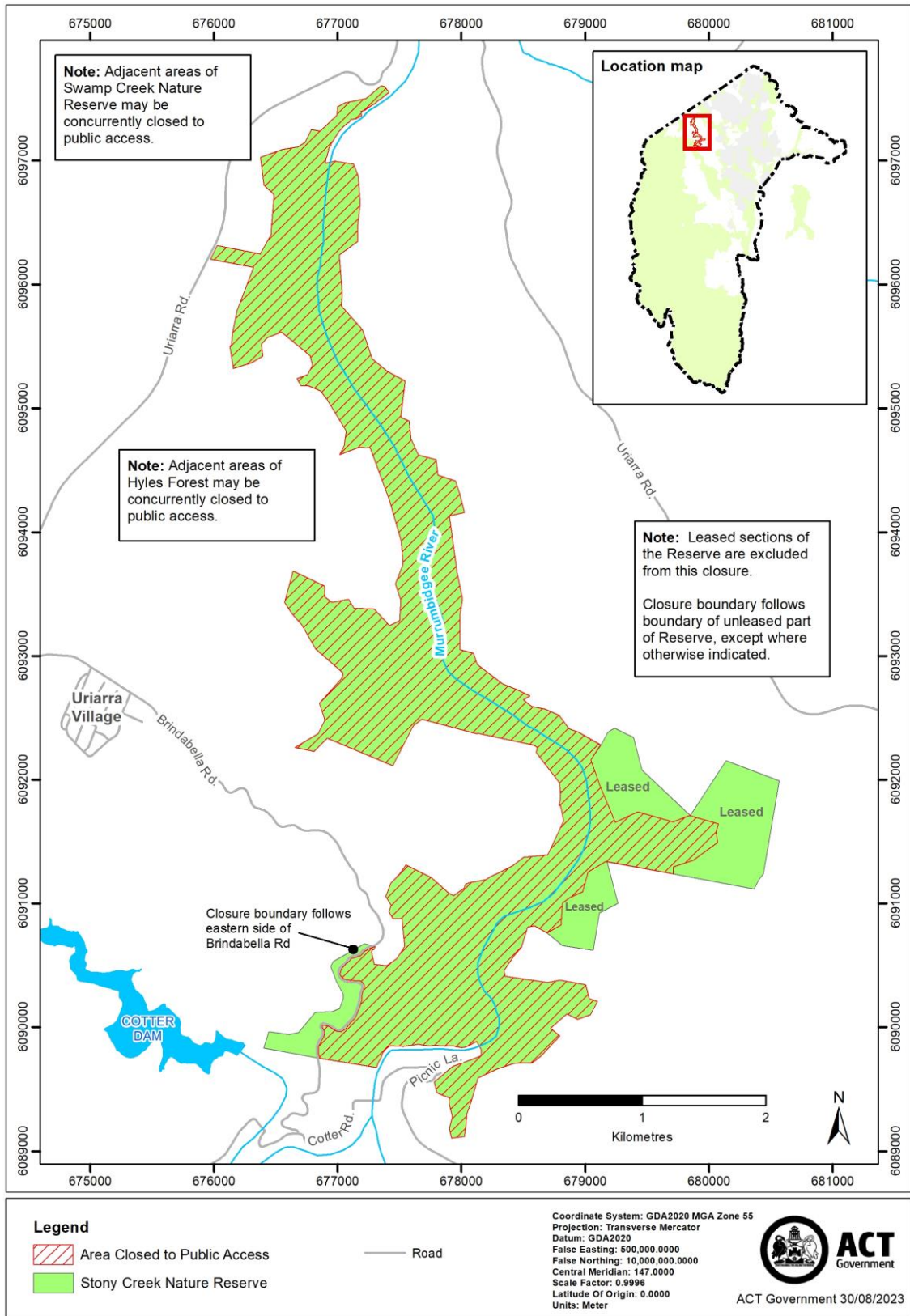
Schedule 4 Area of Sherwood Forest Special Purpose Reserve closed to public access

(see s 3)



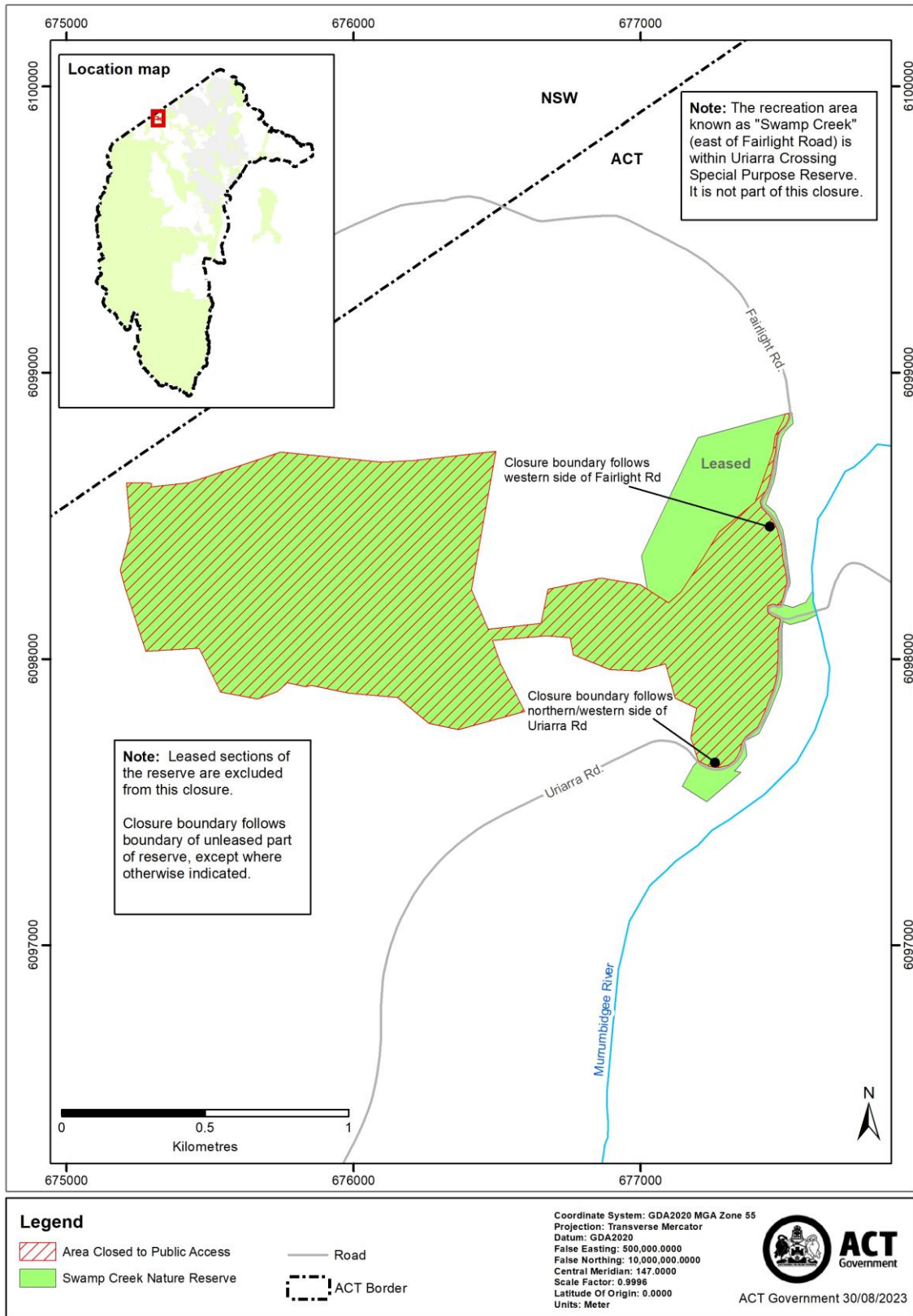
Schedule 5 Area of Stony Creek Nature Reserve closed to public access

(see s 3)



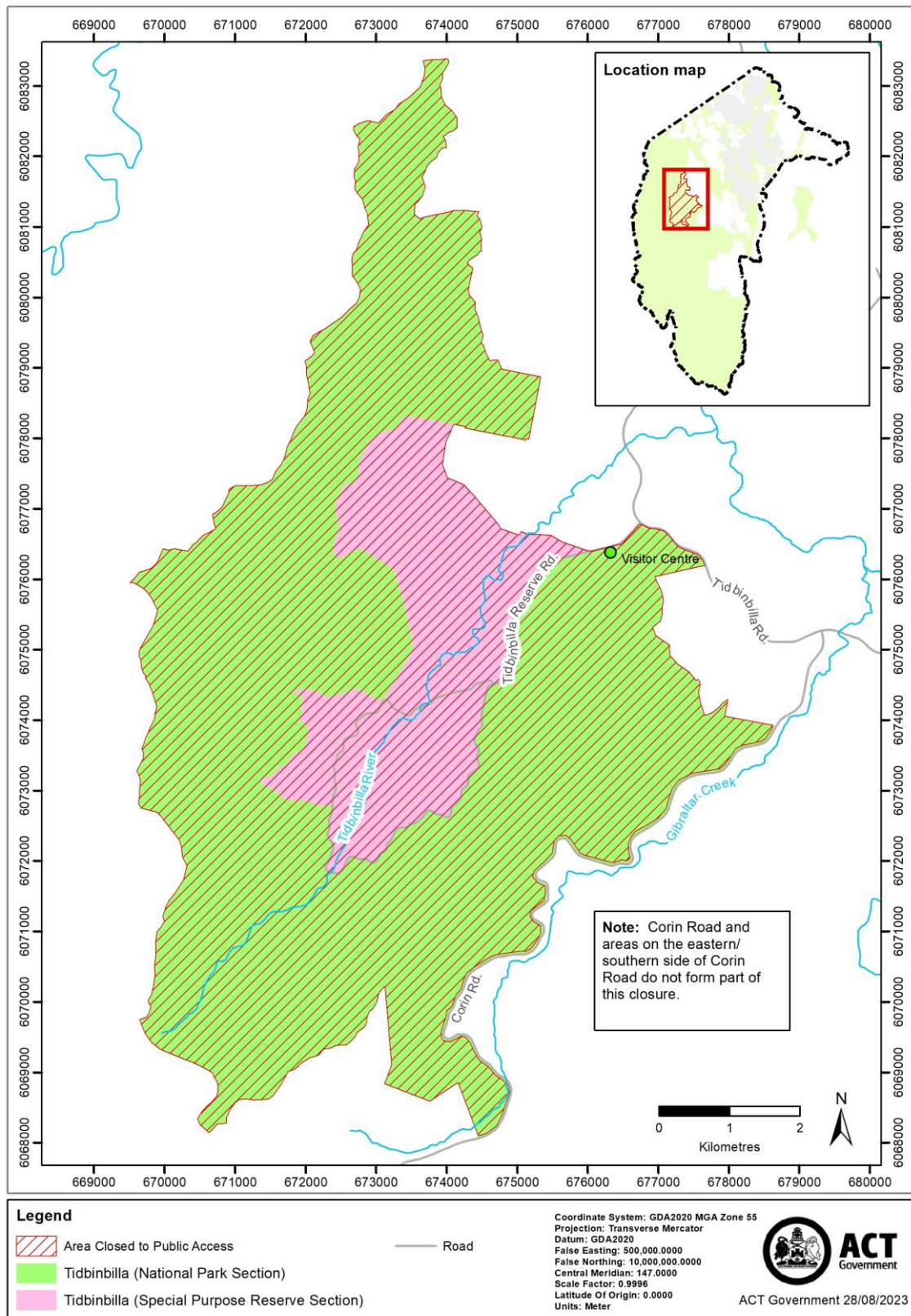
Schedule 6 Area of Swamp Creek Nature Reserve closed to public access

(see s 3)



Schedule 7 Area of Tidbinbilla “nature reserve” closed to public access

(see s 3)



Schedule 8 Closure periods

(see s 3)

column 1 – Reserve	column 2 – Start date	column 3 - End date
Bullen Range Nature Reserve Gigerline Nature Reserve Rob Roy Range Nature Reserve	16 September 2023	26 September 2023
Sherwood Forest Special Purpose Reserve Stony Creek Nature Reserve Swamp Creek Nature Reserve	16 September 2023	22 September 2023
Tidbinbilla “nature reserve” (national park and special purpose reserve)	19 September 2023	20 September 2023

Note Closure periods are inclusive of the start dates and end dates above and cover 24 hours on every applicable day.