

Nature Conservation (Closed Reserves) Declaration 2024 (No 1)

Notifiable instrument NI2024–216

made under the

Nature Conservation Act 2014, s 259 (Conservator may close reserve)

1 Name of instrument

This instrument is the *Nature Conservation (Closed Reserves) Declaration 2024 (No 1)*.

2 Commencement

This instrument commences on 25 May 2024.

3 Declaration

I declare that public access to the following areas (*closed reserves*):

- (a) those parts of Stony Creek Nature Reserve indicated in the map at schedule 1; and
- (b) those parts of Bullen Range Nature Reserve indicated in the map at schedule 2; and
- (c) those parts of Gigerline Nature Reserve indicated in the map at schedule 3; and
- (d) those parts of Rob Roy Range Nature Reserve indicated in the map at schedule 4; and
- (e) those parts of Swamp Creek Nature Reserve indicated in the map at schedule 5; and
- (f) those parts of Sherwood Forest Special Purpose Reserve indicated in the map at schedule 6; and
- (g) those parts of Molonglo River Reserve (part of nature reserve section) indicated in the map at schedule 7; and
- (h) those parts of Tidbinbilla “nature reserve” (national park and special purpose reserve sections) indicated in the map at schedule 8

is prohibited during the closure periods specified at schedule 9.

4 Exceptions

Section 3 does not apply to:

- (a) a conservation officer exercising a function under the Act; or
- (b) a person accompanied by a conservation officer exercising a function under the Act; or
- (c) a contractor undertaking vertebrate pest animal control works within a closed reserve and engaged by the ACT Government to do so.

5 Expiry

This instrument expires on 7 June 2024.

6 Definitions

closure period, for a reserve specified in column 1 of schedule 9, means the period:

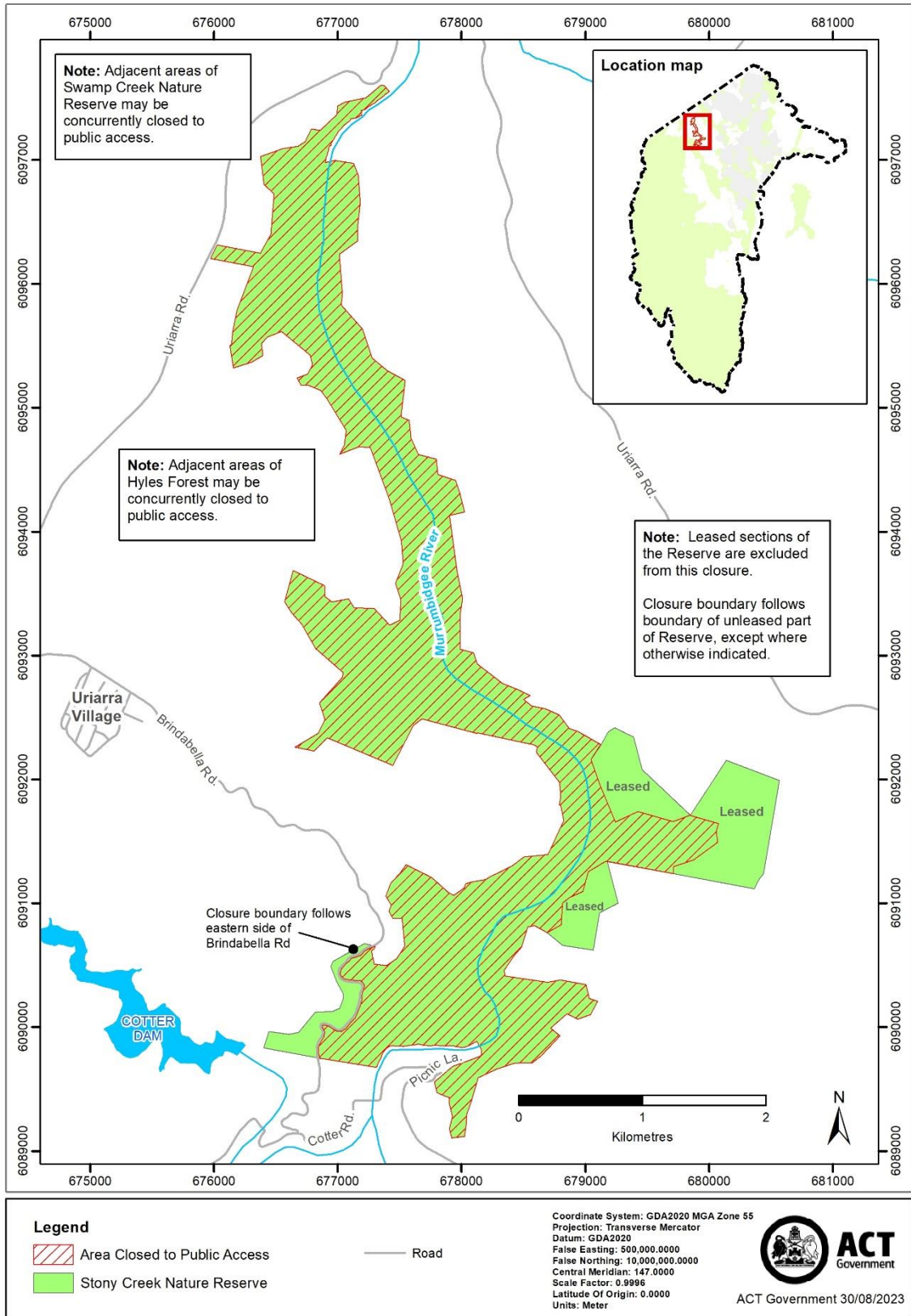
- (a) commencing on the corresponding date (*start date*) specified in column 2 of schedule 9; and
- (b) ending on the corresponding date (*end date*) specified in column 3 of schedule 9.

Bren Burkevics
Conservator of Flora and Fauna

30 April 2024

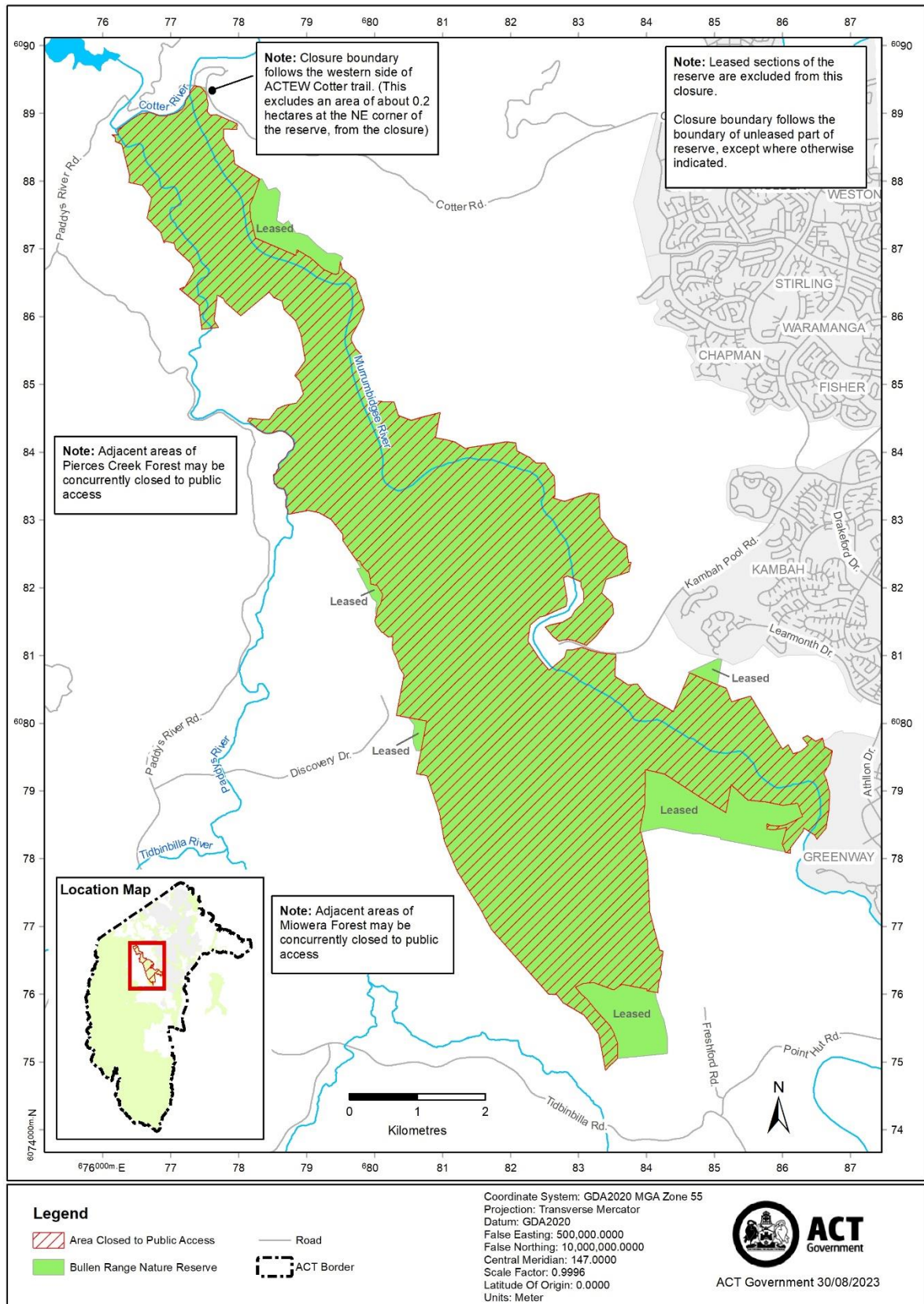
Schedule 1 Area of Stony Creek Nature Reserve closed to public access

(see s 3)



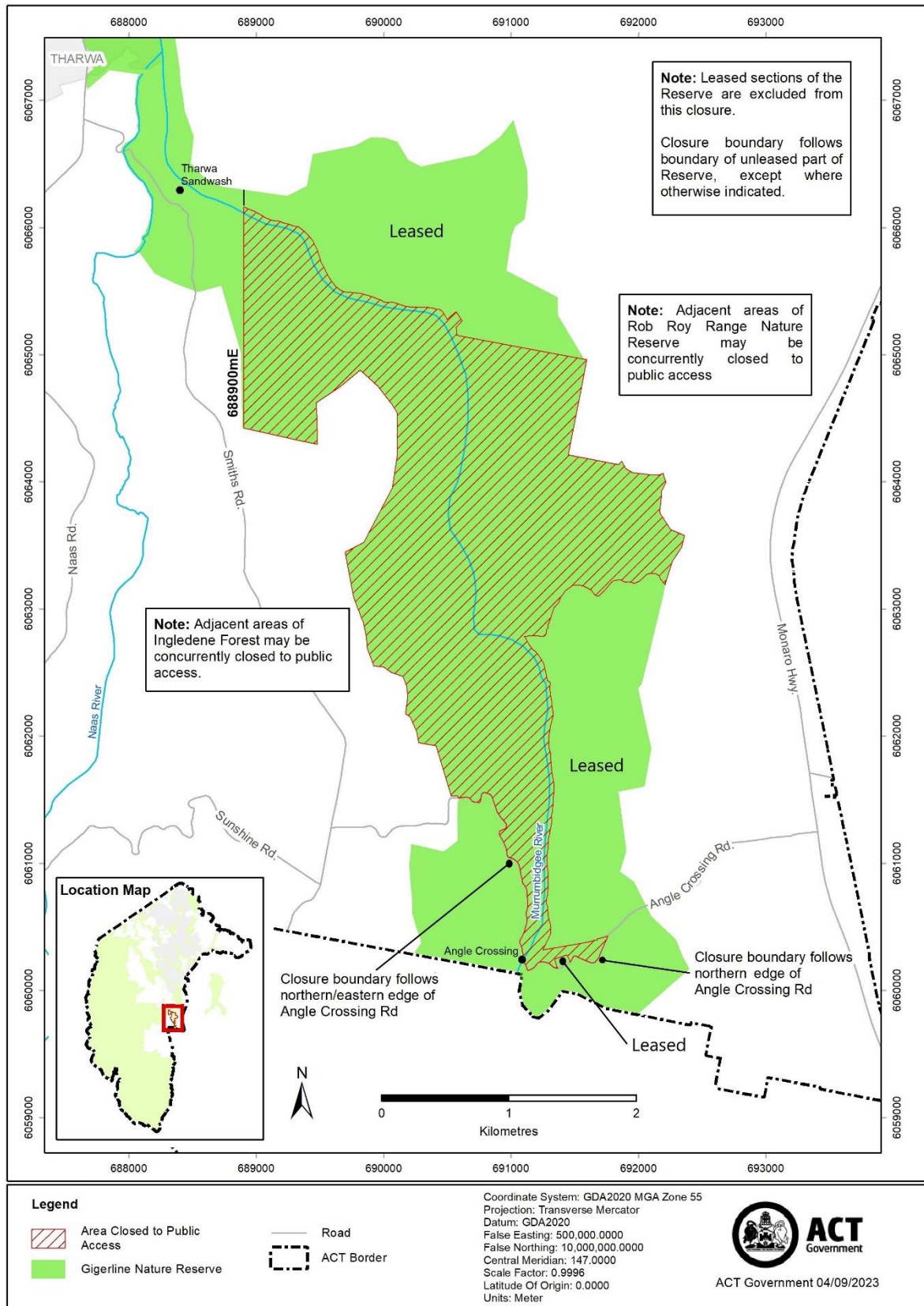
Schedule 2 Area of Bullen Range Nature Reserve closed to public access

(see s 3)



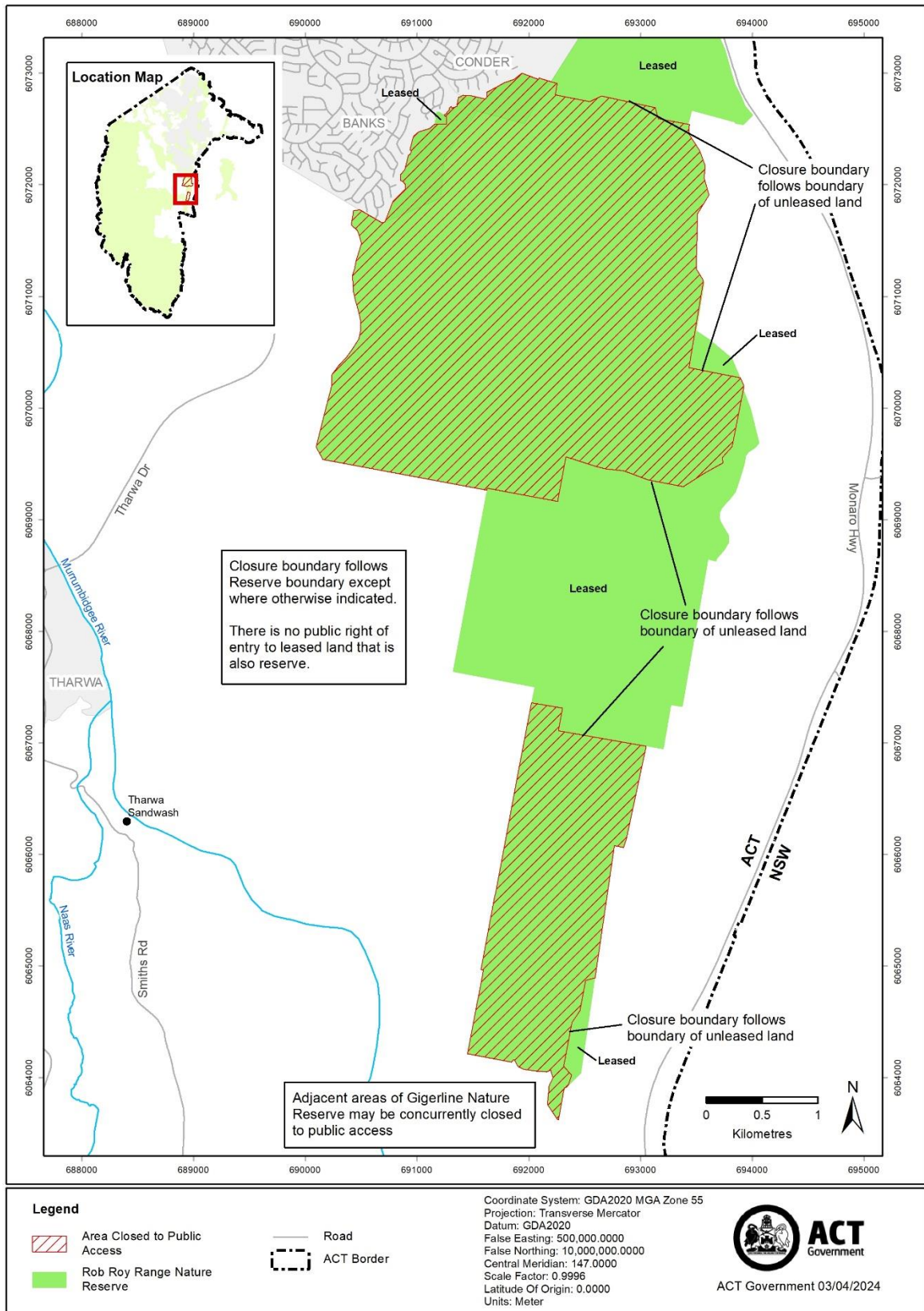
Schedule 3 Area of Gigerline Nature Reserve closed to public access

(see s 3)



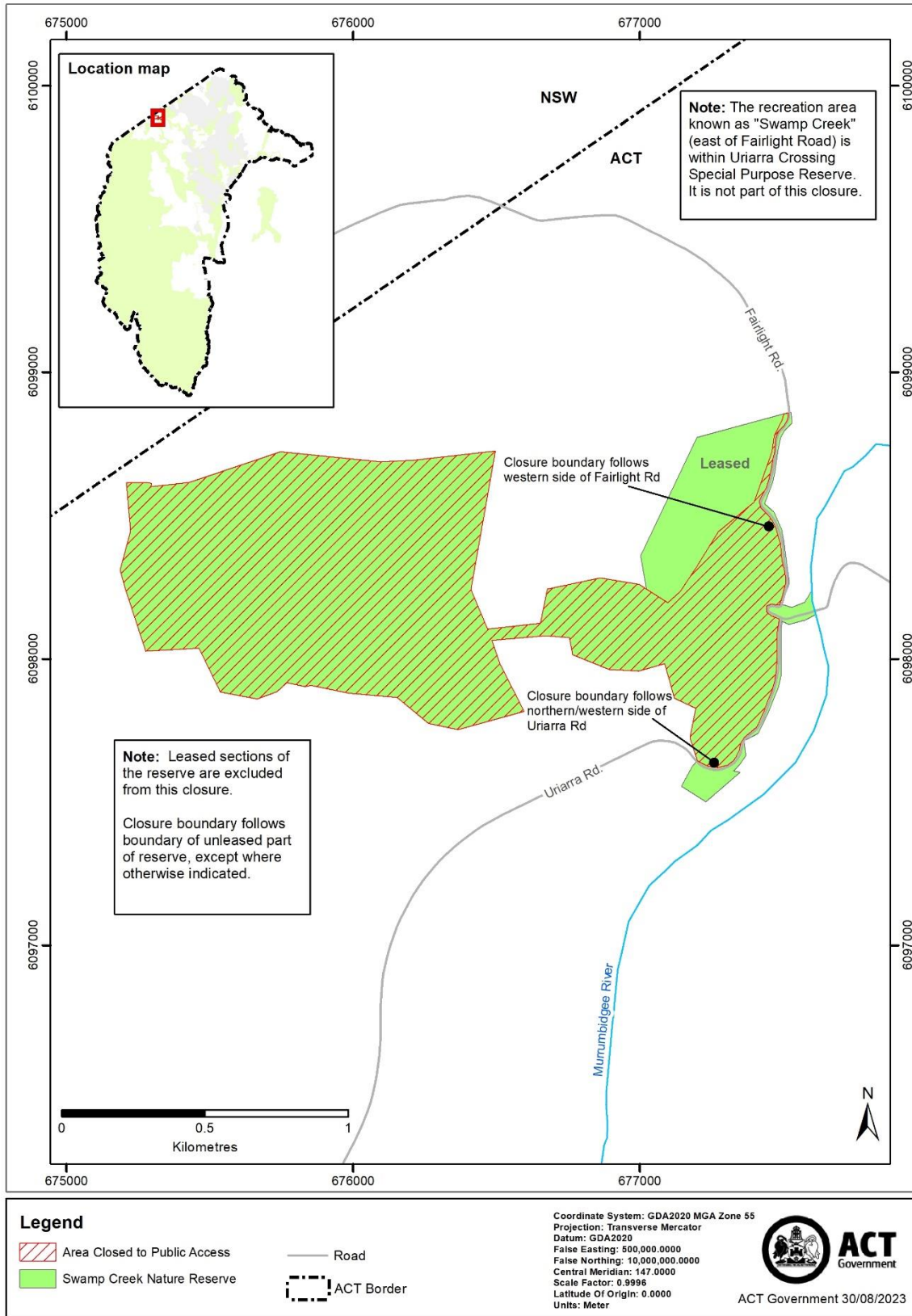
Schedule 4 Area of Rob Roy Range Nature Reserve closed to public access

(see s 3)



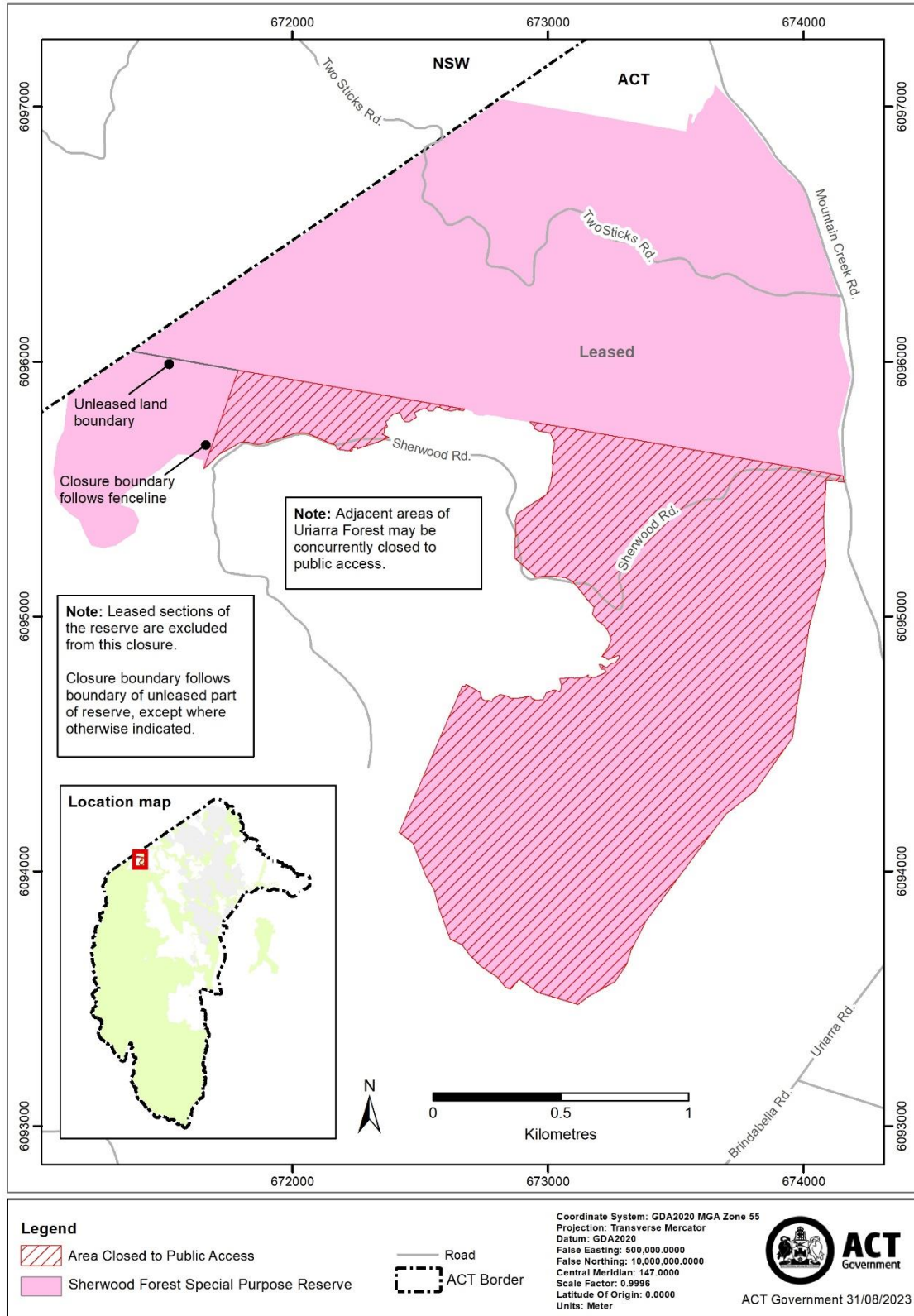
Schedule 5 Area of Swamp Creek Nature Reserve closed to public access

(see s 3)



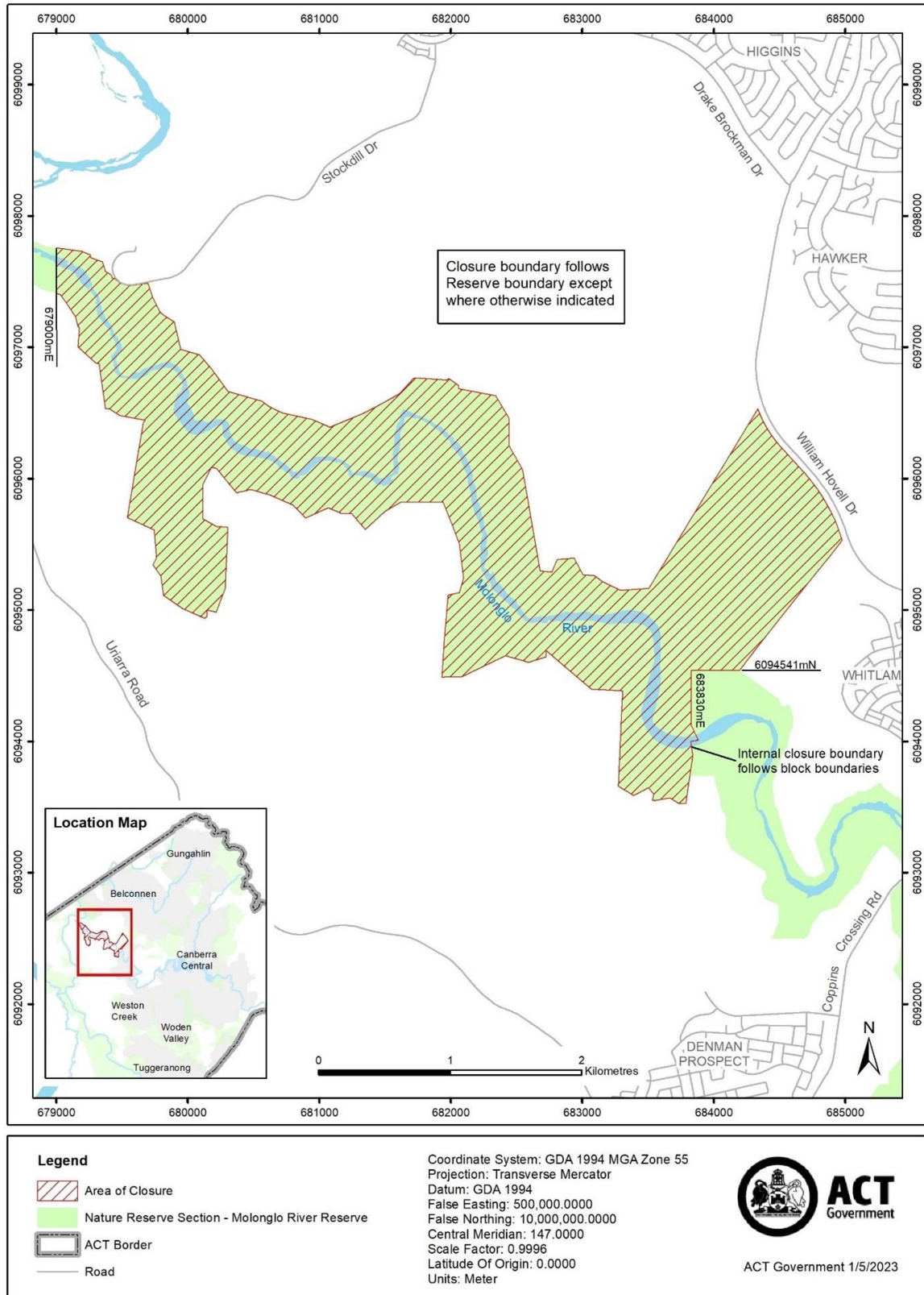
Schedule 6 Area of Sherwood Forest Special Purpose Reserve closed to public access

(see s 3)



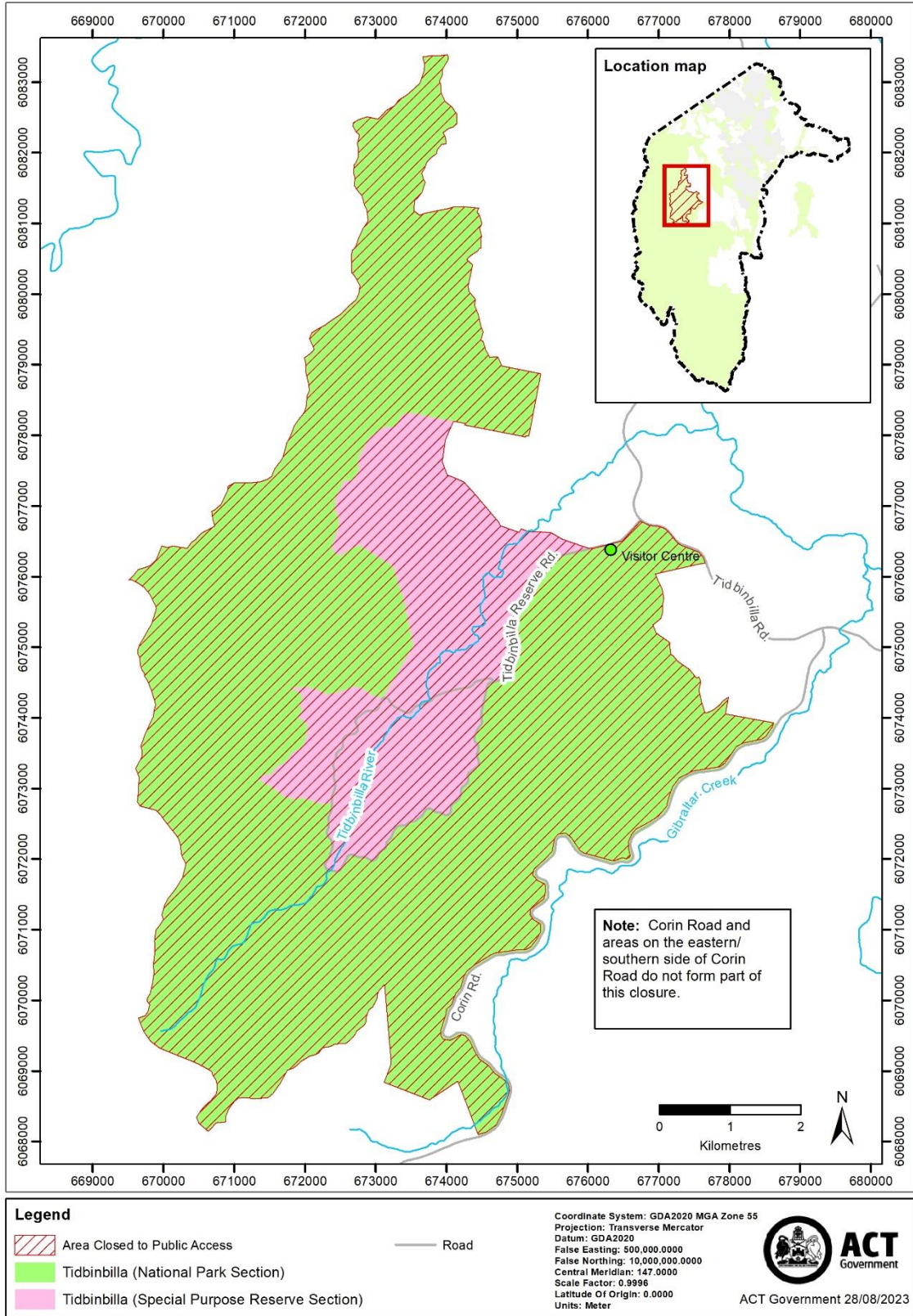
Schedule 7 Area of Molonglo River Reserve closed to public access

(see s 3)



Schedule 8 Area of Tidbinbilla “nature reserve” closed to public access

(see s 3)



Schedule 9 Closure periods

(see s 3)

column 1 – Reserve	column 2 – Start date	column 3 - End date
Stony Creek Nature Reserve (refer map at schedule 1)	25 May 2024	31 May 2024
Bullen Range Nature Reserve (refer map at schedule 2)	25 May 2024	07 June 2024
Gigerline Nature Reserve (refer map at schedule 3)	25 May 2024	07 June 2024
Rob Roy Range Nature Reserve (refer map at schedule 4)	25 May 2024	07 June 2024
Swamp Creek Nature Reserve (refer map at schedule 5)	03 June 2024	07 June 2024
Sherwood Forest Special Purpose Reserve (refer map at schedule 6)	03 June 2024	07 June 2024
Molonglo River Reserve (part of nature reserve section) (refer map at schedule 7)	03 June 2024	07 June 2024
Tidbinbilla “nature reserve” (national park and special purpose reserve sections) (refer map at schedule 8)	04 June 2024	05 June 2024

Note Closure periods are inclusive of the start dates and end dates above and cover 24 hours on every applicable day.