

# Nature Conservation (Closed Reserves) Declaration 2025 (No 5)

**Notifiable instrument NI2025–294**

made under the

**Nature Conservation Act 2014, s 259 (Conservator may close reserve)**

---

## **1 Name of instrument**

This instrument is the *Nature Conservation (Closed Reserves) Declaration 2025 (No 5)*.

## **2 Commencement**

This instrument commences at 6:00 pm on 10 June 2025.

## **3 Declaration**

I declare that public access to:

- (a) the reserves mentioned in schedule 1; and
- (b) those parts of Mount Ainslie Nature Reserve, Molonglo River Reserve, Gungaderra Grasslands Nature Reserve and Crace Grasslands Nature Reserve indicated in the maps at schedule 2,

is prohibited during the closure times mentioned in schedule 3.

## **4 Exceptions**

Section 3 does not apply to:

- (a) a person accompanied by a conservation officer exercising a function under the Act; or
- (b) a person who is:
  - (i) implementing the *Nature Conservation (Eastern Grey Kangaroo) Controlled Native Species Management Plan 2017* (DI2017-37) within the areas declared under section 3 (*closed reserves*); or
  - (ii) controlling a pest animal species in the closed reserves; and
  - (iii) contracted by the Territory to conduct the activity mentioned in paragraph (i) or (ii); or

- (iv) authorised in writing by the custodian of the closed reserve accessed by the person, to conduct the activity mentioned in paragraph (i) or (ii).

## **5 Expiry**

This instrument expires on 31 July 2025.

Bren Burkevics  
Conservator of Flora and Fauna

6 June 2025

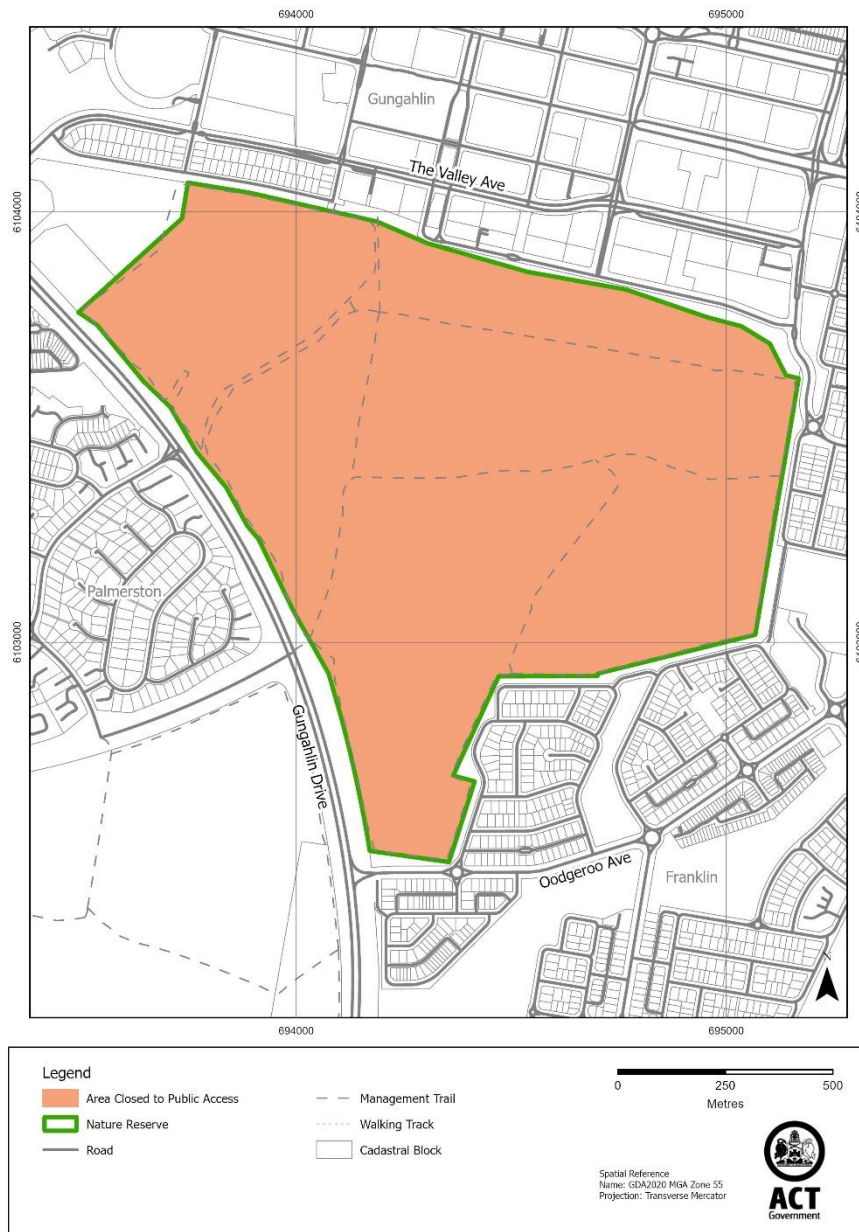
# Schedule 1 Reserves fully closed

(see s 3)

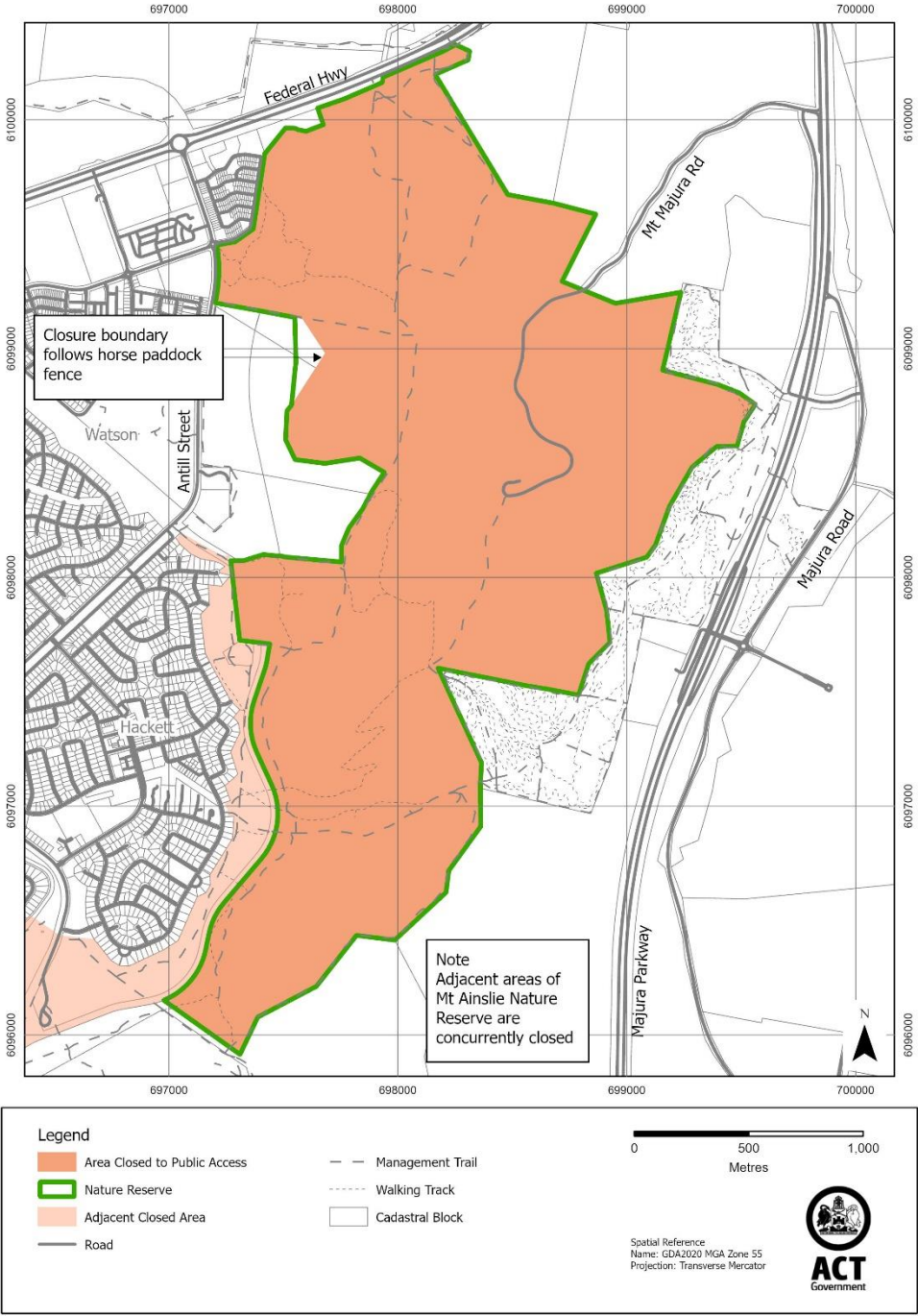
## Reserves

Mulanggari Grasslands Nature Reserve  
Mount Majura Nature Reserve

## Mulanggari Grasslands Nature Reserve



# Mount Majura Nature Reserve



## Schedule 2 Reserves partially closed

(see s 3)

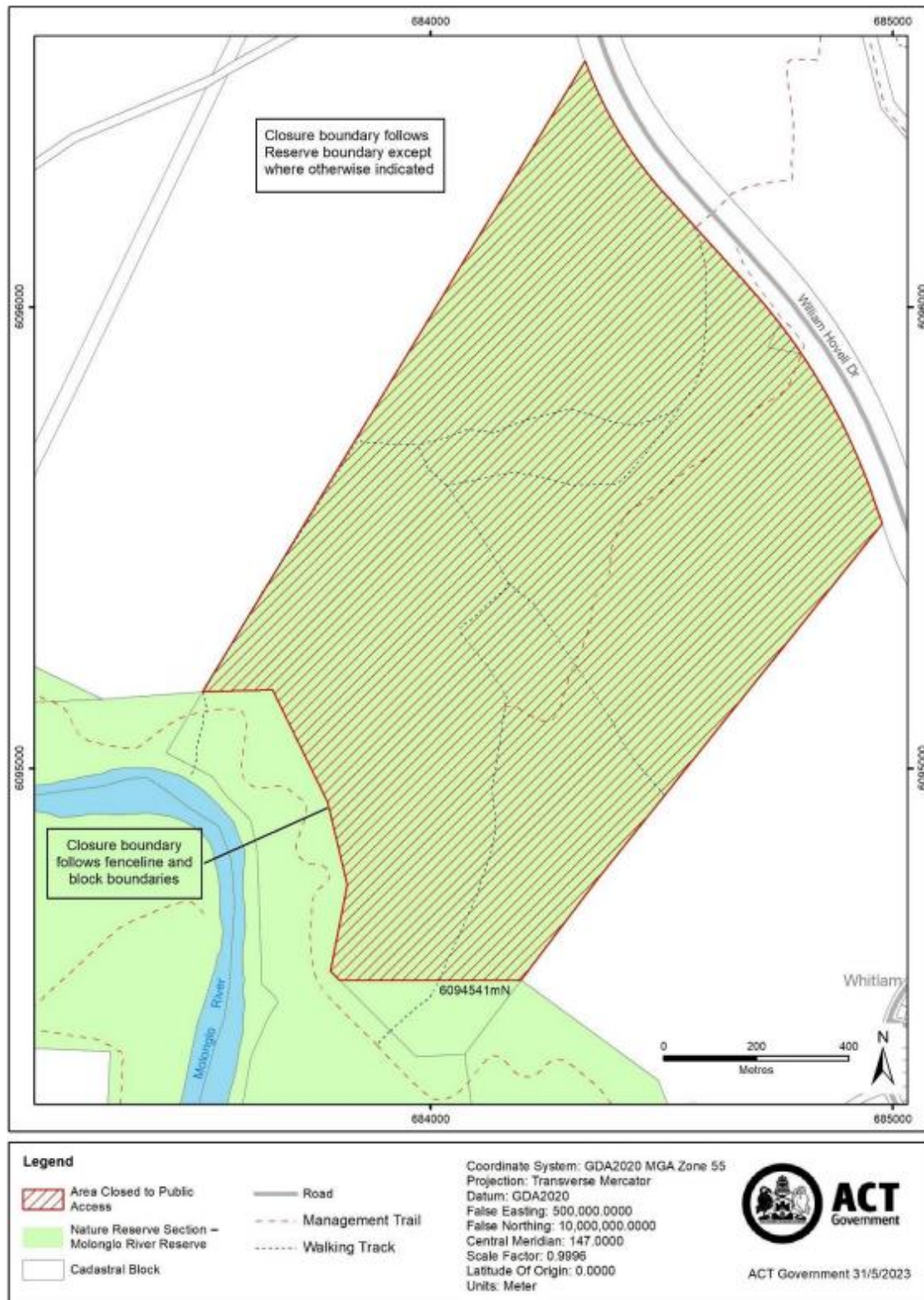
### Mount Ainslie Nature Reserve





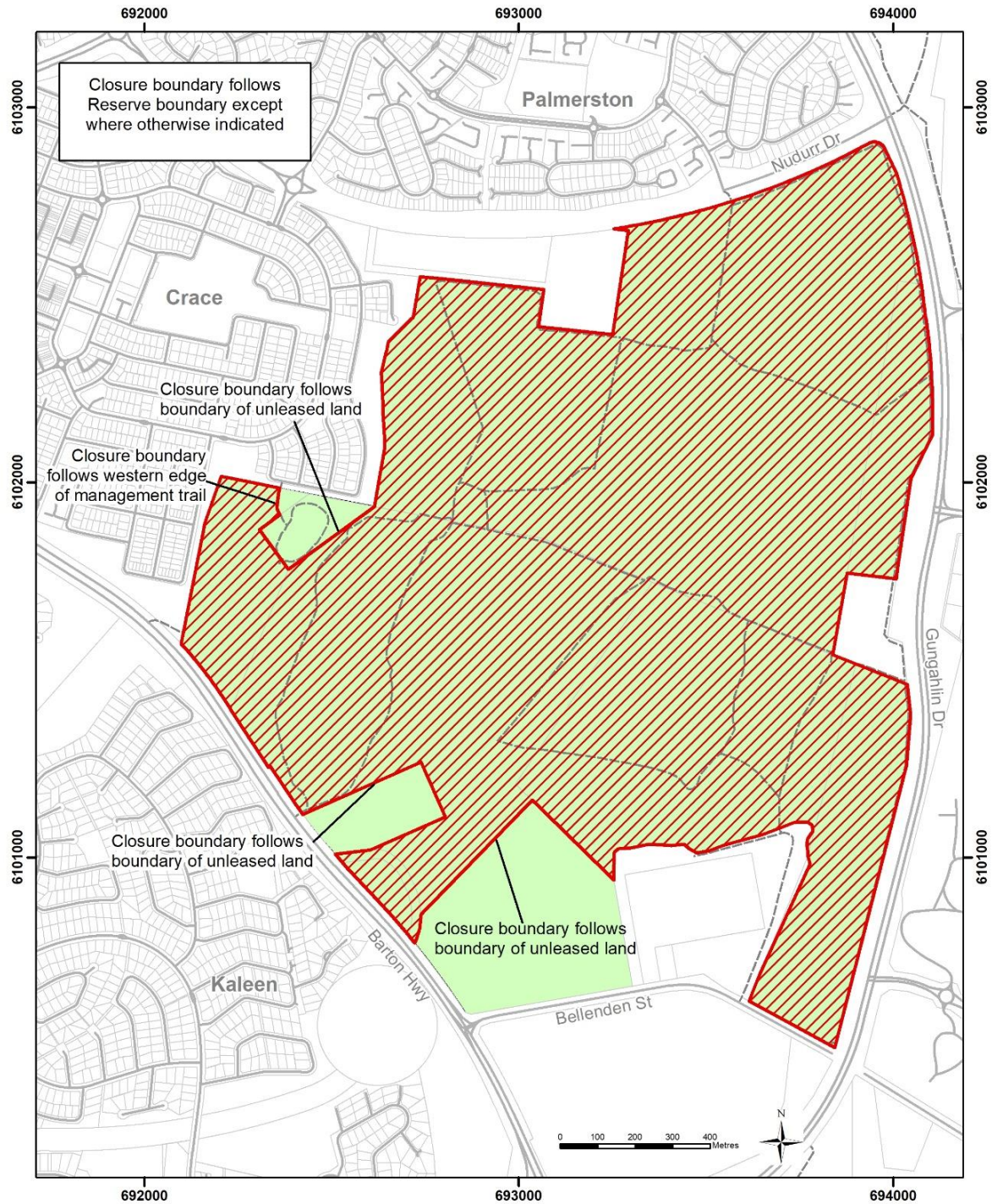
## Molonglo River Reserve (“Kama” section)

*Note – The area closed is wholly within the former Kama Nature Reserve*





# Gungaderra Grasslands Nature Reserve



## Legend

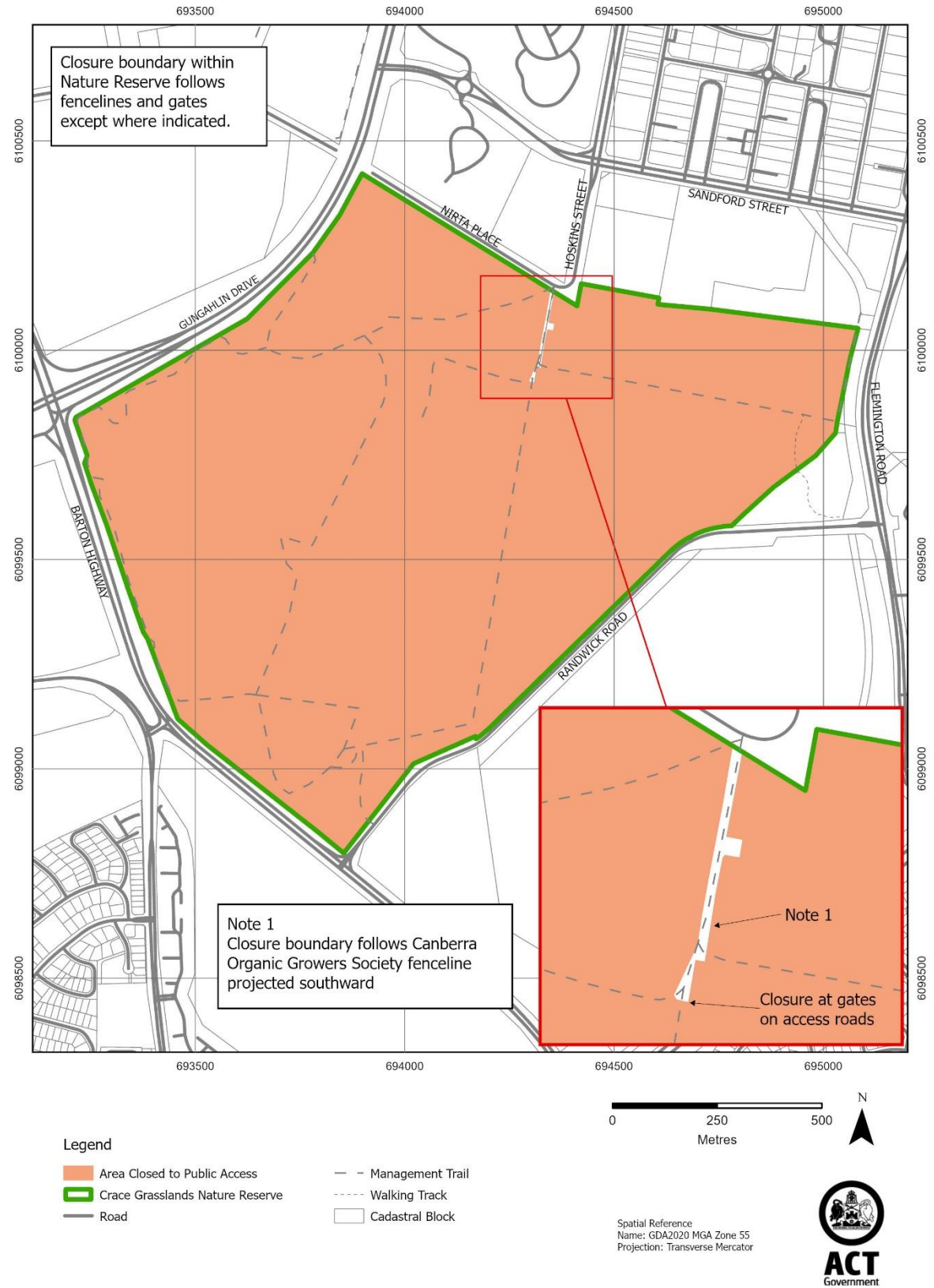
- Area Closed to Public Access
- Gungaderra Grasslands Nature Reserve
- Cadastral Block
- Road
- Management Trail

Coordinate System: GDA2020 MGA Zone 55  
Projection: Transverse Mercator  
Datum: GDA2020  
False Easting: 500,000.0000  
False Northing: 10,000,000.0000  
Central Meridian: 147.0000  
Scale Factor: 0.9996  
Latitude Of Origin: 0.0000  
Units: Meter



ACT Government 22 May 2024

# Crace Grasslands Nature Reserve





## Schedule 3      Closure times

(see s 3)

<b>Times when public access is prohibited</b>
Beginning at 6:00 pm every Monday, Tuesday, Wednesday and Thursday and ending on the following day at 6:00 am.

*Note*      The closure beginning on Thursday 31 July 2025 will end at midnight 1 August 2025.