

Nature Conservation (Closed Reserves) Declaration 2026 (No 1)

Notifiable instrument NI2026–220

made under the

Nature Conservation Act 2014, s 259 (Conservator may close reserve)

1 Name of instrument

This instrument is the *Nature Conservation (Closed Reserves) Declaration 2026 (No 1)*.

2 Commencement

This instrument commences on 13 May 2026.

3 Declaration

I declare that public access to the following areas (*closed reserves*):

- (a) those parts of Tidbinbilla Nature Reserve indicated in the map at schedule 1; and
- (b) those parts of Namadgi National Park indicated in the map at schedule 2 (*Namadgi National Park – Naas Valley Area*), and
- (c) those parts of Namadgi National Park indicated in the map at schedule 3 (*Namadgi National Park – Southwest Area*); and
- (d) those parts of Namadgi National Park indicated in the map at schedule 4 (*Namadgi National Park – North Area*); and
- (e) those parts of Lower Cotter Catchment Reserve indicated in the map at schedule 5;

is prohibited during the closure periods specified at schedule 6.

Note Other sections of Namadgi National Park may also be closed during the period of these closures.

4 Exceptions

Section 3 does not apply to:

- (a) a person accompanied by a conservation officer exercising a function under the Act; or

- (b) a contractor undertaking vertebrate pest animal control works within a closed reserve and engaged by the ACT Government to do so; or
- (c) an employee of Icon Water exercising a function of their position within the defined area.

5 Expiry

This instrument expires on 13 June 2026.

6 Definitions

closure period, for a closed reserve specified in column 1 of schedule 6, means the period:

- (a) commencing on the corresponding date (*start date*) specified in column 2 of schedule 6; and
- (b) ending on the corresponding date (*end date*) specified in column 3 of schedule 6.

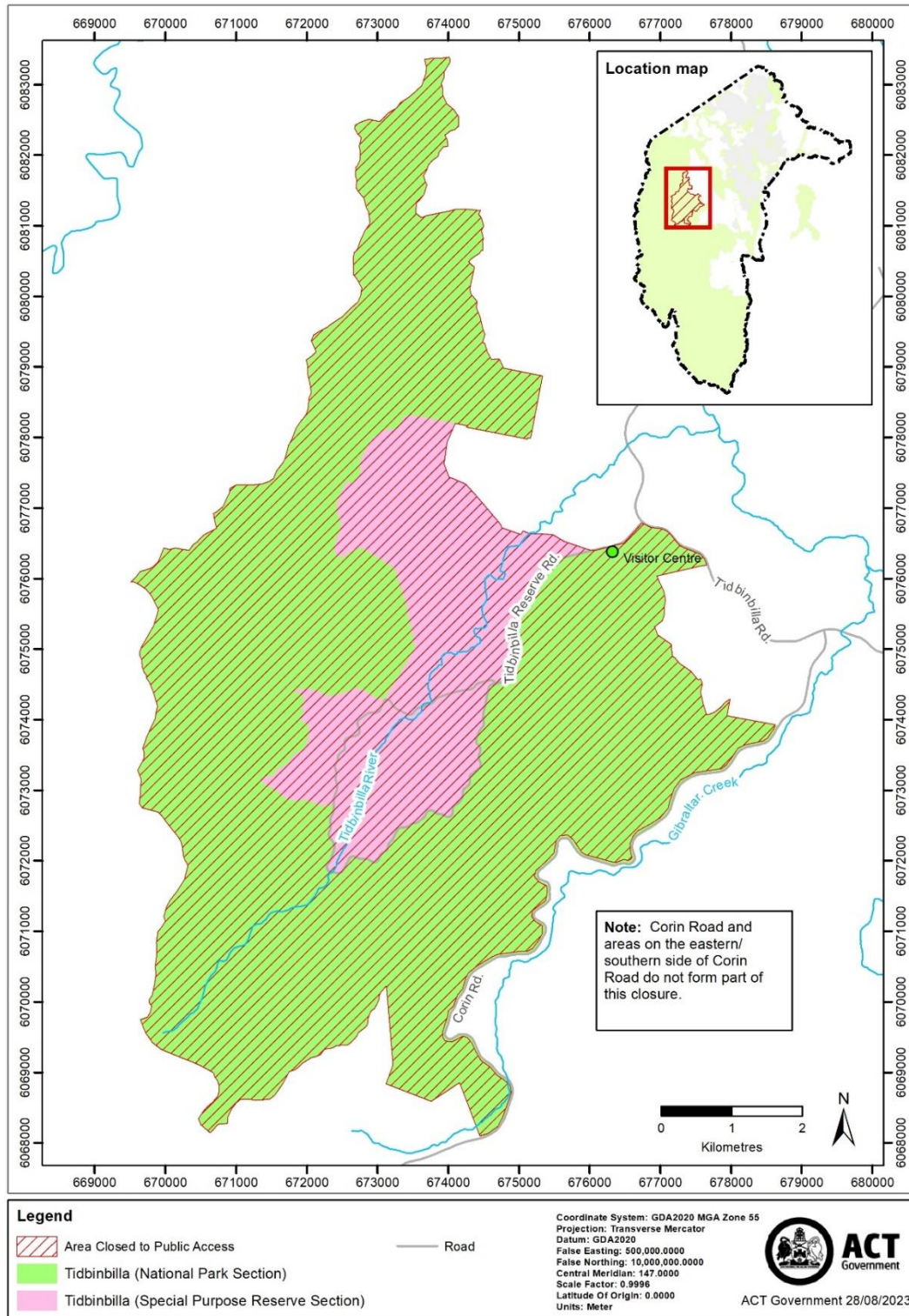
the defined area means any part of Lower Cotter Catchment Reserve or Namadgi National Park that is within 100 metres of:

- (a) the most direct route by road between Laurel Camp Road and the Bendora Dam wall (following East West Break, Pipeline Rd and Bendora Rd); or
- (b) Corin Road; or
- (c) an Icon Water facility in the immediate vicinity of (a) or (b).

Bren Burkevics
Conservator of Flora and Fauna
4 May 2026

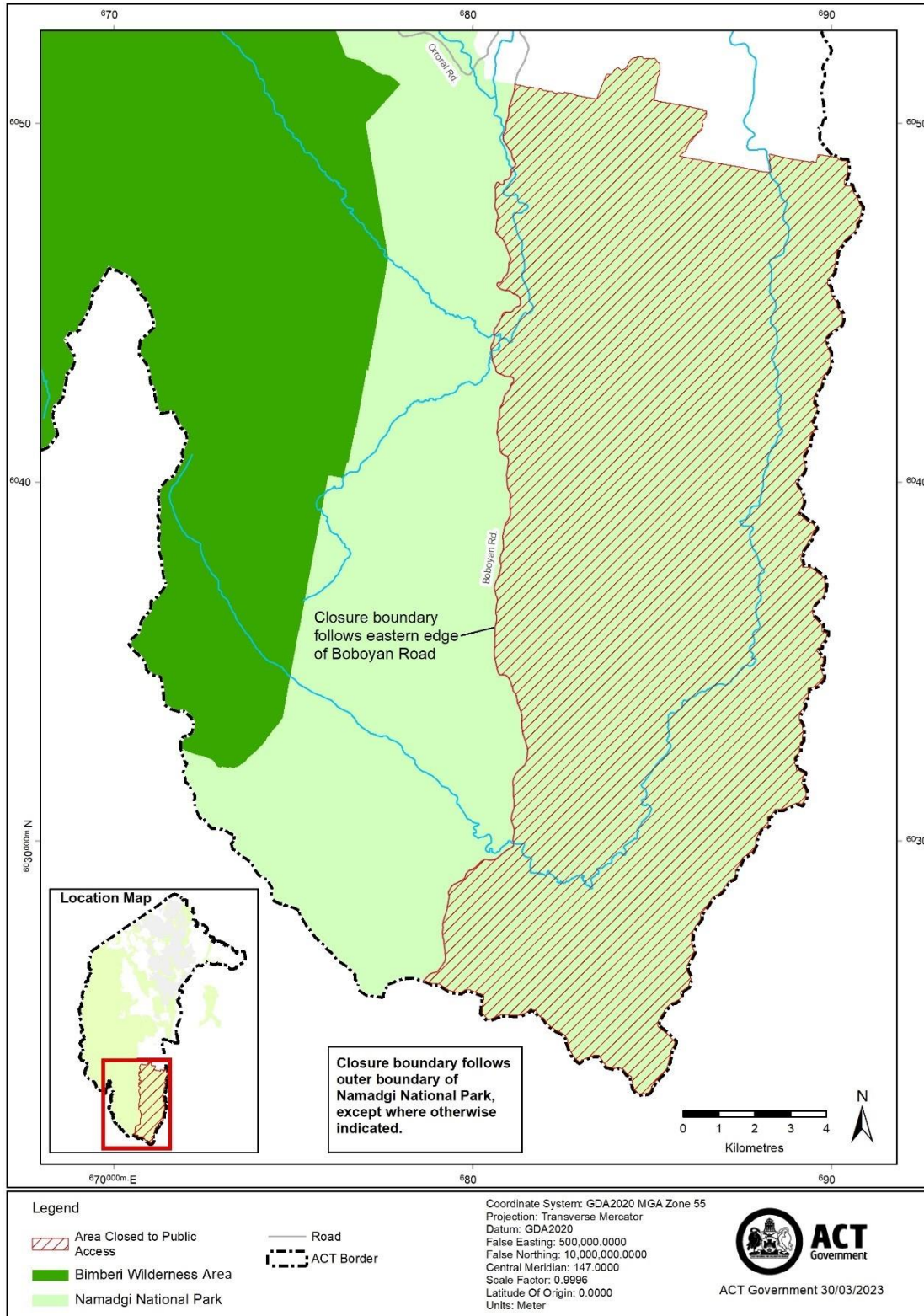
Schedule 1 Area of Tidbinbilla “nature reserve” closed to public access

(see s 3)



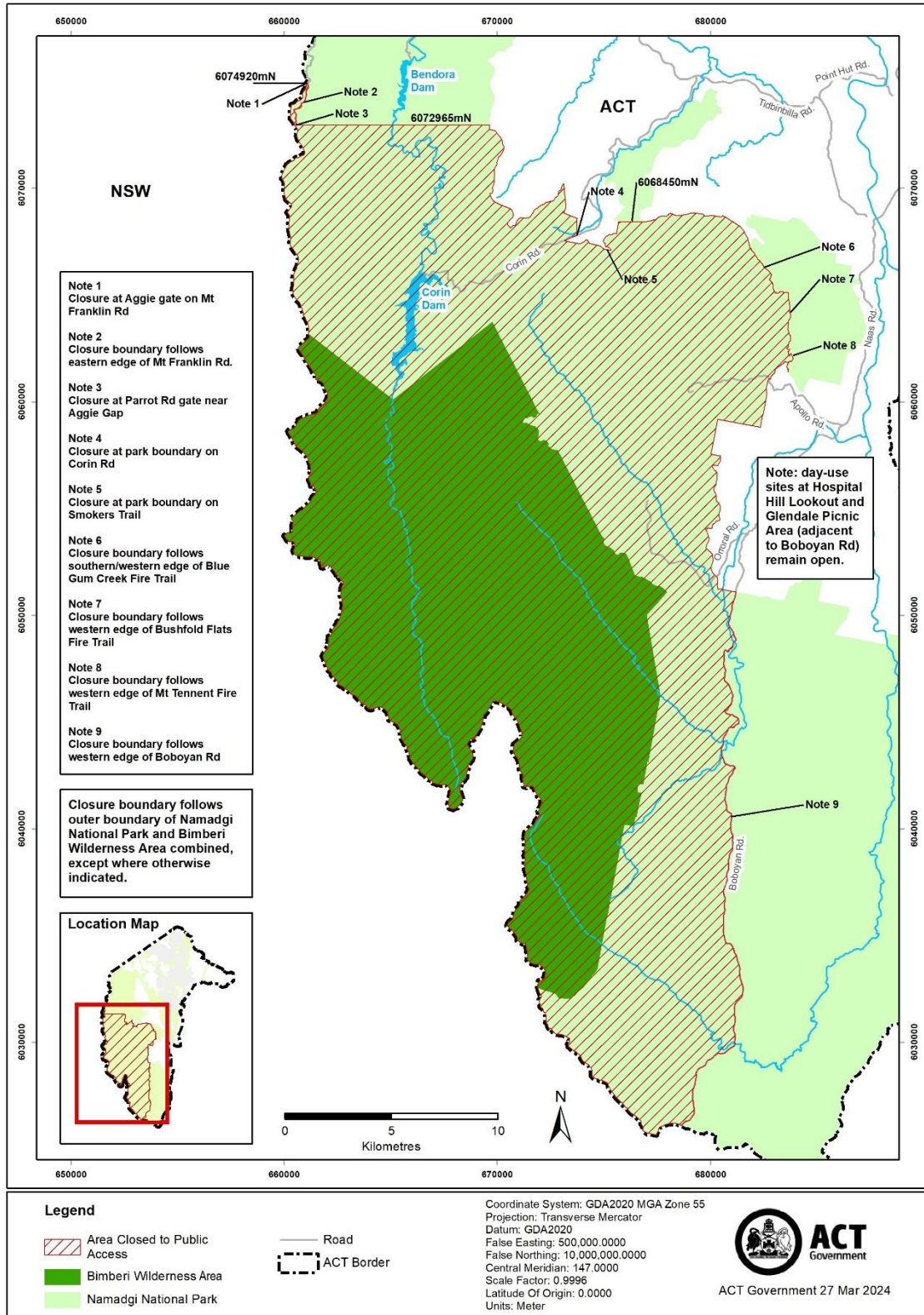
Schedule 2 Area of Namadgi National Park (*Namadgi National Park – Naas Valley Area*) closed to public access

(see s 3)



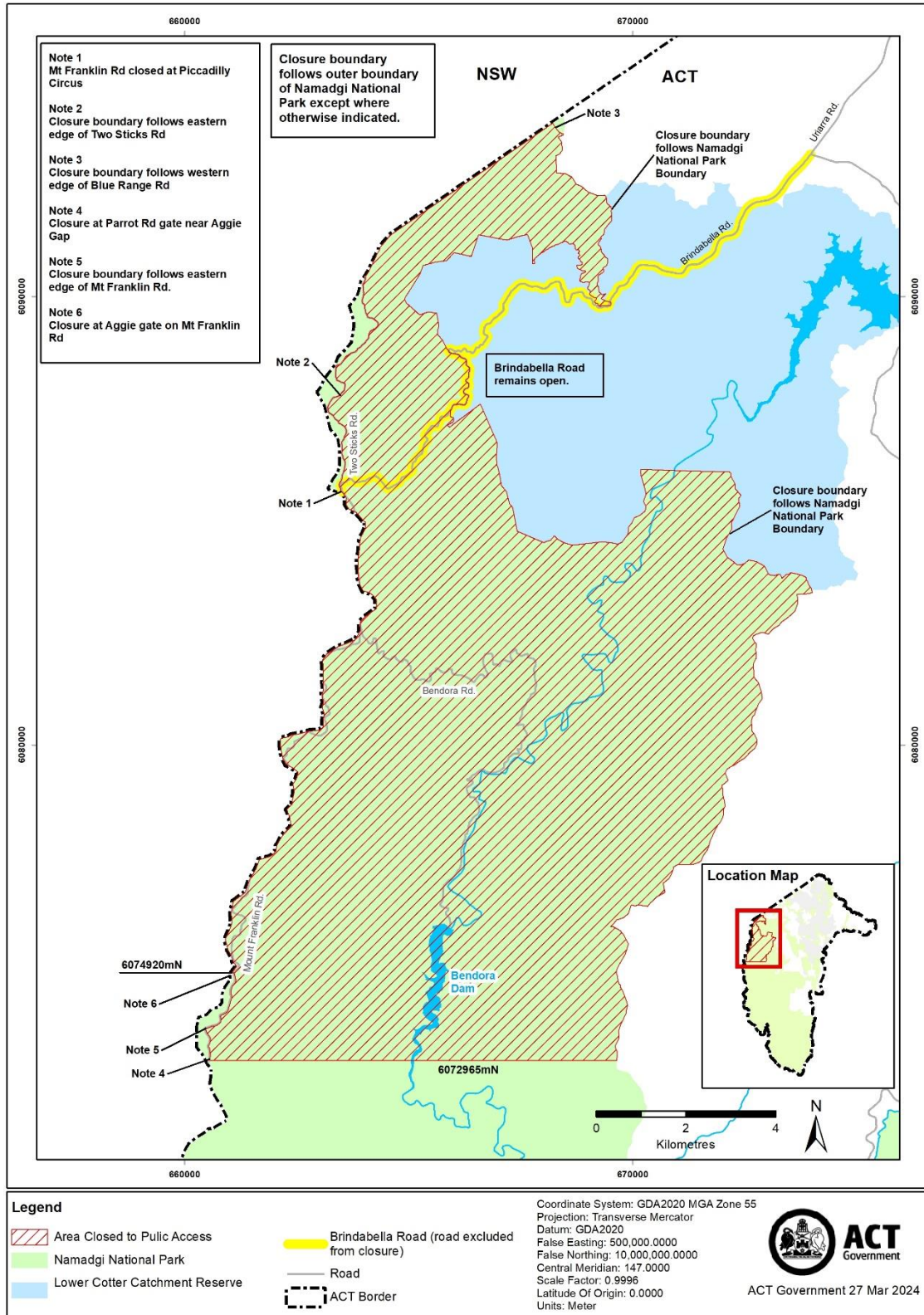
Schedule 3 Area of Namadgi National Park (*Namadgi National Park – Southwest Area*) closed to public access

(see s 3)



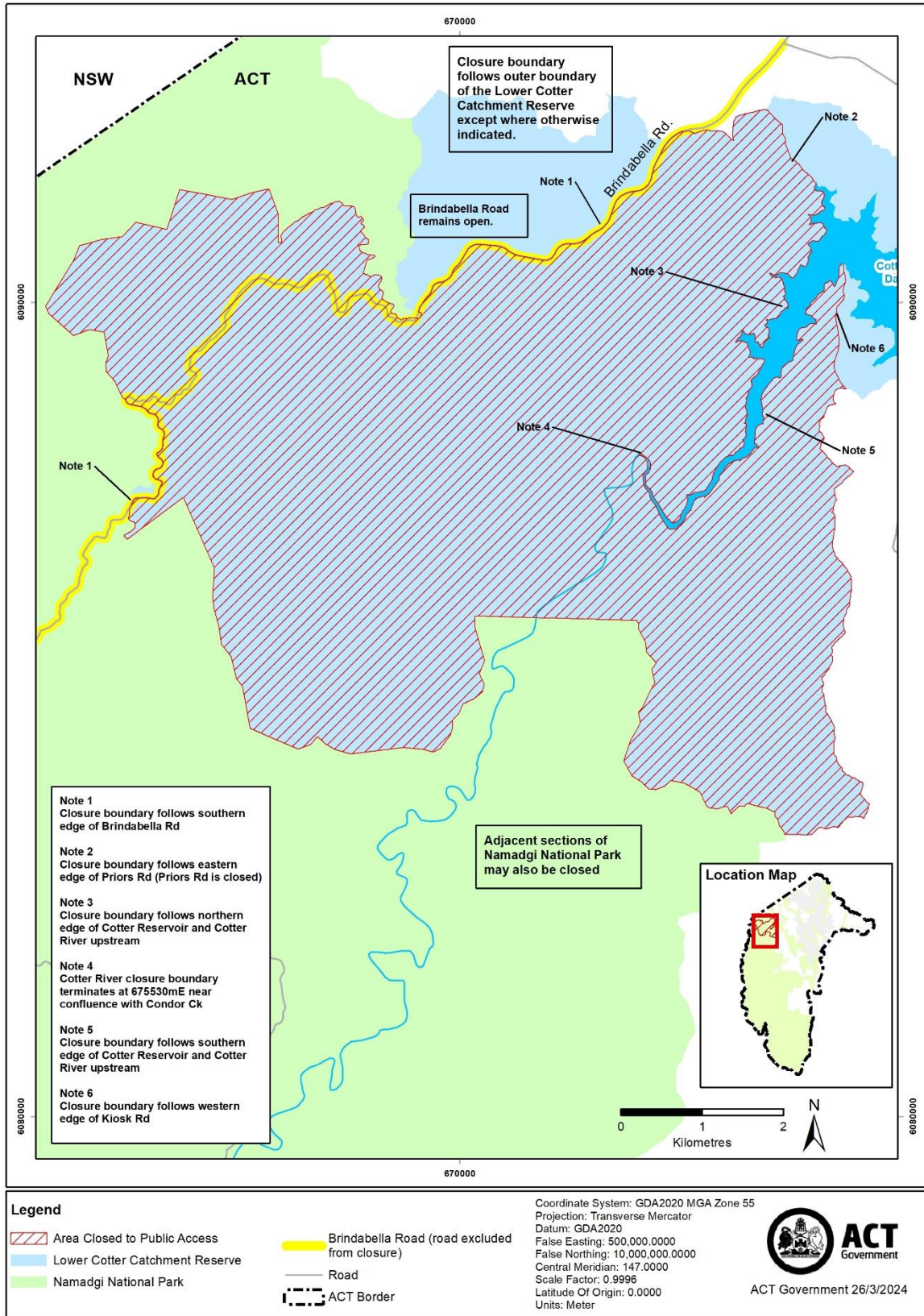
Schedule 4 Area of Namadgi National Park (*Namadgi National Park – North*) closed to public access

(see s 3)



Schedule 5 Area of Lower Cotter Catchment Reserve closed to public access

(see s 3)



Schedule 6 Closure periods

(see s 3)

column 1 – Closed reserve	column 2 – Start date	column 3 - End date
Tidbinbilla “nature reserve” (national park and special purpose reserve sections) (refer map at schedule 1)	13 May 2026	14 May 2026
Namadgi National Park – Naas Valley Area (refer map at schedule 2)	15 May 2026	22 May 2026
Namadgi National Park – Southwest Area (refer map at schedule 3)	18 May 2026	29 May 2026
Namadgi National Park – North (refer map at schedule 4)	9 June 2026	12 June 2026
Lower Cotter Catchment Reserve (refer map at schedule 5)	9 June 2026	12 June 2026

Note Closure periods are inclusive of the start dates and end dates above and cover 24 hours on every applicable day.