



Australian Capital Territory

# **Casino Control Regulation 2006**

**SL2006-8**

made under the

**Casino Control Act 2006**

**Republication No 1**

**Effective: 1 May 2006 – 1 October 2018**

Republication date: 1 May 2006

Regulation not amended

## About this republication

### The republished law

This is a republication of the *Casino Control Regulation 2006*, made under the *Casino Control Act 2006* (including any amendment made under the *Legislation Act 2001*, part 11.3 (Editorial changes)) as in force on 1 May 2006. It also includes any commencement, repeal or expiry affecting the republished law.

The legislation history and amendment history of the republished law are set out in endnotes 3 and 4.

### Kinds of republications

The Parliamentary Counsel's Office prepares 2 kinds of republications of ACT laws (see the ACT legislation register at [www.legislation.act.gov.au](http://www.legislation.act.gov.au)):

- authorised republications to which the *Legislation Act 2001* applies
- unauthorised republications.

The status of this republication appears on the bottom of each page.

### Editorial amendments

The *Legislation Act 2001*, part 11.3 authorises the Parliamentary Counsel to make editorial amendments and other changes of a formal nature when preparing a law for republication. Editorial changes do not change the effect of the law, but have effect as if they had been made by an Act commencing on the republication date (see *Legislation Act 2001*, s 115 and s 117). The changes are made if the Parliamentary Counsel considers they are desirable to bring the law into line, or more closely into line, with current legislative drafting practice.

This republication does not include amendments made under part 11.3 (see endnote 1).

### Uncommenced provisions and amendments

If a provision of the republished law has not commenced or is affected by an uncommenced amendment, the symbol **U** appears immediately before the provision heading. The text of the uncommenced provision or amendment appears only in the last endnote.

### Modifications

If a provision of the republished law is affected by a current modification, the symbol **M** appears immediately before the provision heading. The text of the modifying provision appears in the endnotes. For the legal status of modifications, see *Legislation Act 2001*, section 95.

### Penalties

The value of a penalty unit for an offence against this republished law at the republication date is—

- (a) if the person charged is an individual—\$100; or
- (b) if the person charged is a corporation—\$500.



Australian Capital Territory

# Casino Control Regulation 2006

made under the

**Casino Control Act 2006**

## Contents

---

	Page
1 Name of regulation	2
3 Dictionary	2
4 Notes	2
5 Prescribed functions—Act, s 41 and dict, def <i>prescribed function</i>	2
6 Area to be designated casino—Act, s 62 (1)	3
7 Core trading hours—Act, s 68 (4), def <i>core trading hours</i>	4
8 Kinds of cheque to be accepted—Act, s 112 (1) (b) (i)	4
9 How to accept cheque—Act, s 112 (1) (b) (ii)	4
10 Amount prescribed for scheme—Act, dict, def <i>commission-based player scheme</i> , par (b)	4

---

R1  
01/05/06

Casino Control Regulation 2006  
Effective: 01/05/06-01/10/18

contents 1

## Contents

---

<b>Schedule 1</b>	<b>Designation of casino</b>	Page 5
<b>Part 1.1</b>	<b>First floor</b>	5
<b>Part 1.2</b>	<b>Ground floor</b>	6
<b>Part 1.3</b>	<b>Basement</b>	7
<b>Dictionary</b>		8
<b>Endnotes</b>		
1	About the endnotes	9
2	Abbreviation key	9
3	Legislation history	10
4	Amendment history	10



Australian Capital Territory

# Casino Control Regulation 2006

---

made under the

**Casino Control Act 2006**

---

**1 Name of regulation**

This regulation is the *Casino Control Regulation 2006*.

**3 Dictionary**

The dictionary at the end of this regulation is part of this regulation.

*Note 1* The dictionary at the end of this regulation defines certain terms used in this regulation, and includes references (*signpost definitions*) to other terms defined elsewhere.

For example, the signpost definition '*commission-based player scheme*—see the [Act](#), dictionary' means that the term 'commission-based player scheme' is defined in that dictionary and the definition applies to this regulation.

*Note 2* A definition in the dictionary (including a signpost definition) applies to the entire regulation unless the definition, or another provision of the regulation, provides otherwise or the contrary intention otherwise appears (see [Legislation Act](#), s 155 and s 156 (1)).

**4 Notes**

A note included in this regulation is explanatory and is not part of this regulation.

*Note* See the [Legislation Act](#), s 127 (1), (4) and (5) for the legal status of notes.

**5 Prescribed functions—Act, s 41 and dict, def *prescribed function***

The following functions are prescribed as functions that may be performed by a casino employee in relation to the operation of the casino:

- (a) the conduct of gaming in the casino;
- (b) the organisation, administration and management of commission-based player schemes;
- (c) the organisation and conduct of casino marketing schemes;

- (d) the storage, exchange and counting of money and chips in the casino, other than in relation to the supply of food or beverages;
- (e) the movement of money and chips in the casino, other than in relation to the supply of food or beverages;
- (f) the storage of gaming equipment in the casino;
- (g) the security of the casino and its operations;
- (h) the surveillance of the casino and its operations;
- (i) the use and storage of security equipment;
- (j) the use of surveillance equipment;
- (k) the storage of surveillance equipment;
- (l) computer systems maintenance and support in the casino;
- (m) the unsupervised maintenance and repair of gaming equipment;
- (n) the unsupervised maintenance and repair of security and surveillance equipment in the casino;
- (o) the unsupervised access to administrative and financial information relating to the operation of the casino other than access by external auditors or company directors of the licensee or of the licensee's beneficial owners;
- (p) the supervision of anything mentioned in paragraphs (a) to (o);
- (q) management roles in the casino, including functions that include making decisions that involve the exercise of discretions that substantially affect, or could affect, the operation of the casino.

## **6 Area to be designated casino—Act, s 62 (1)**

The areas outlined in bold on the plan in schedule 1, part 1.1, part 1.2 and part 1.3 are designated to be the casino.

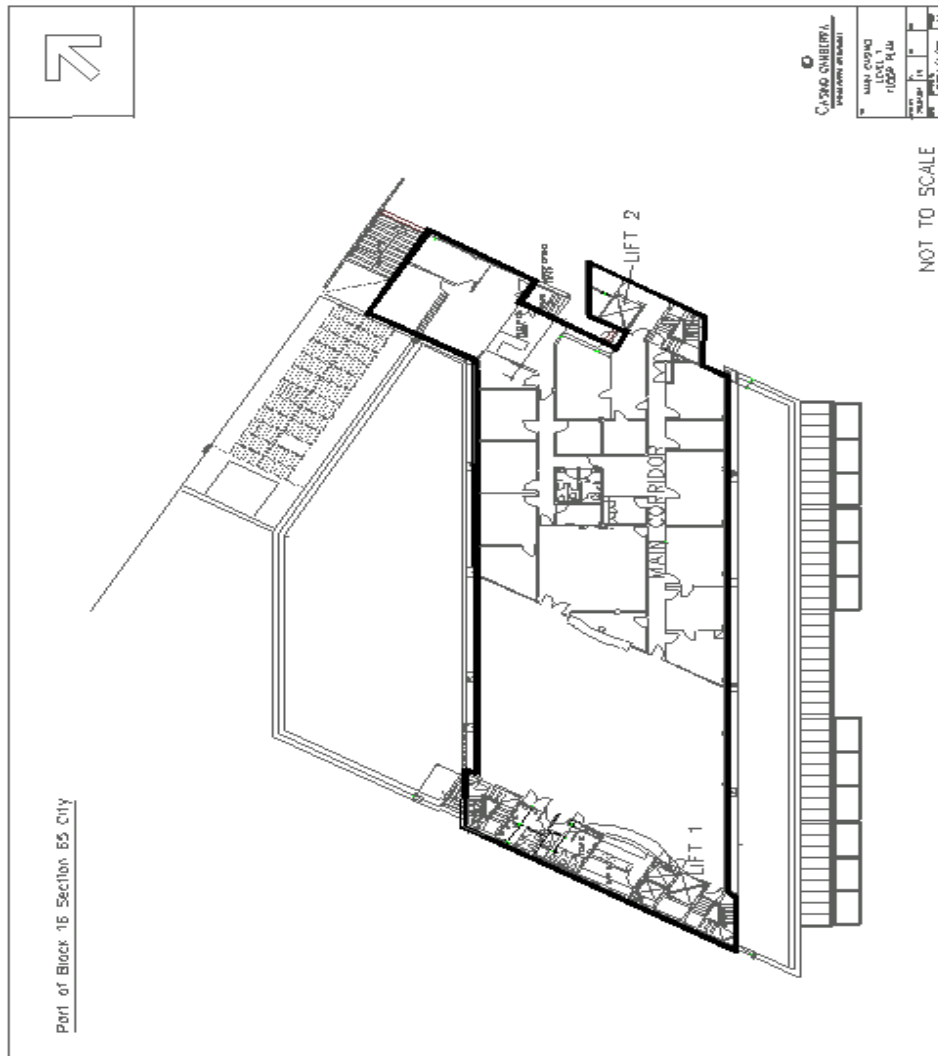
- 7 Core trading hours—Act, s 68 (4), def *core trading hours***  
The core trading hours are between midnight and 2 am and between 5 pm and midnight on any day.
- 8 Kinds of cheque to be accepted—Act, s 112 (1) (b) (i)**  
A cheque that meets the following requirements is prescribed:
- (a) the cheque is drawn in favour of the casino licensee or the person who presents the cheque;
  - (b) the cheque is not postdated;
  - (c) for a redeeming cheque—the cheque is not dated earlier than the date of the most recent of the cheques to be redeemed.
- 9 How to accept cheque—Act, s 112 (1) (b) (ii)**  
A casino licensee who accepts a cheque must—
- (a) be satisfied about the identity of the person who presents the cheque; and
  - (b) keep a record of—
    - (i) any proof of identity that the person shows to the licensee; and
    - (ii) any inquiry the licensee makes to verify the person’s identity; and
  - (c) comply with any control procedures for accepting cheques.
- 10 Amount prescribed for scheme—Act, dict, def *commission-based player scheme*, par (b)**  
The prescribed amount is \$1 500.



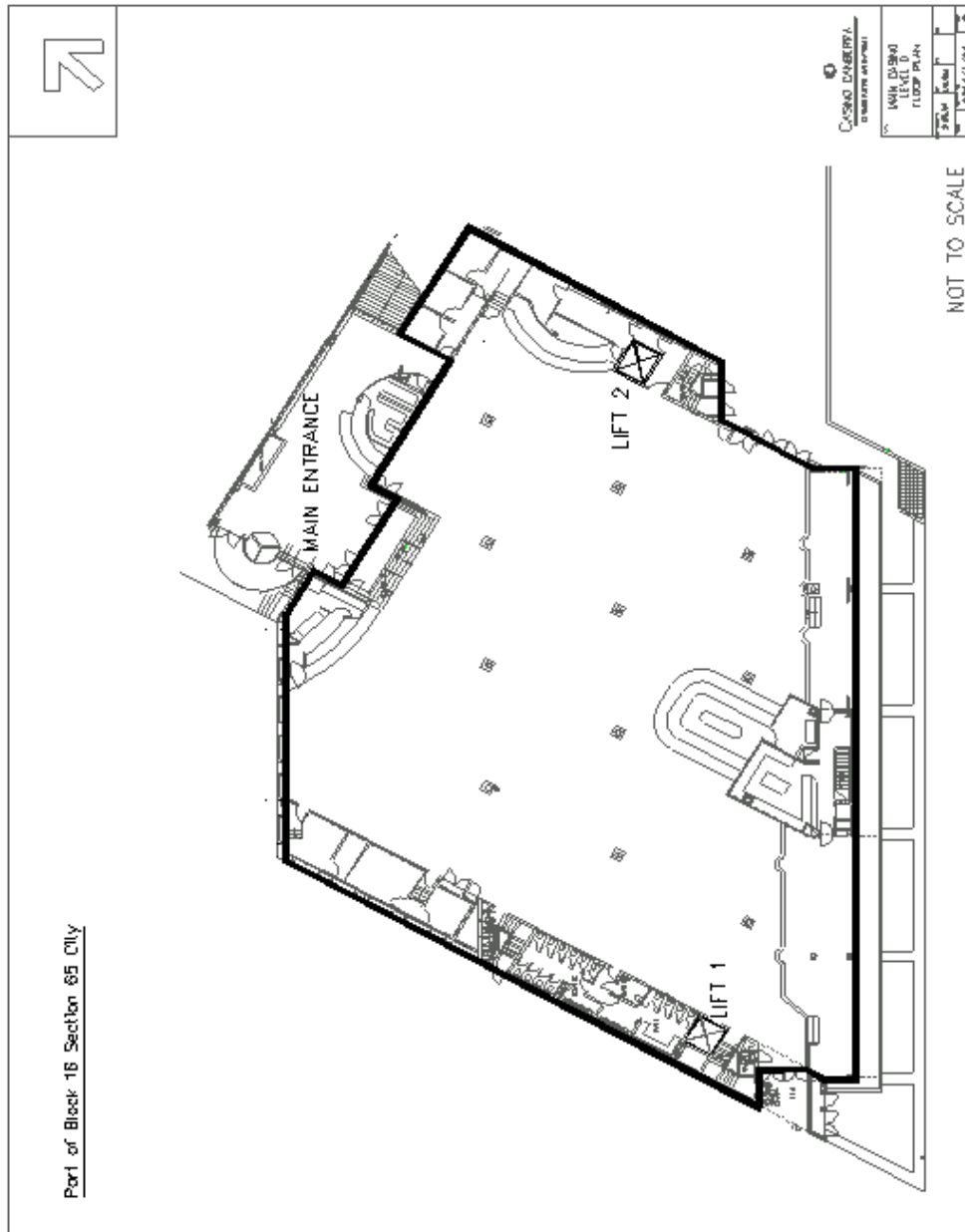
# Schedule 1 Designation of casino

(see s 6)

## Part 1.1 First floor



## Part 1.2 Ground floor





## Dictionary

(see s 3)

*Note 1* The [Legislation Act](#) contains definitions and other provisions relevant to this regulation.

*Note 2* For example, the [Legislation Act](#), dict, pt 1, defines the following terms:

- Act
- function
- must (see s 146)
- prescribed.

*Note 3* Terms used in this regulation have the same meaning that they have in the [Casino Control Act 2006](#) (see [Legislation Act](#), s 148). For example, the following terms are defined in the [Casino Control Act 2006](#), dict:

- control procedures
- gaming
- gaming equipment.

***commission-based player scheme***—see the [Act](#), dictionary.

***prescribed function***—see the [Act](#), dictionary.

## Endnotes

### 1 About the endnotes

Amending and modifying laws are annotated in the legislation history and the amendment history. Current modifications are not included in the republished law but are set out in the endnotes.

Not all editorial amendments made under the *Legislation Act 2001*, part 11.3 are annotated in the amendment history. Full details of any amendments can be obtained from the Parliamentary Counsel's Office.

Uncommenced amending laws and expiries are listed in the legislation history and the amendment history. These details are underlined. Uncommenced provisions and amendments are not included in the republished law but are set out in the last endnote.

If all the provisions of the law have been renumbered, a table of renumbered provisions gives details of previous and current numbering.

The endnotes also include a table of earlier republications.

### 2 Abbreviation key

am = amended	ord = ordinance
amdt = amendment	orig = original
ch = chapter	par = paragraph/subparagraph
def = definition	pres = present
dict = dictionary	prev = previous
disallowed = disallowed by the Legislative Assembly	(prev...) = previously
div = division	pt = part
exp = expires/expired	r = rule/subrule
Gaz = gazette	renum = renumbered
hdg = heading	reloc = relocated
IA = Interpretation Act 1967	R[X] = Republication No
ins = inserted/added	RI = reissue
LA = Legislation Act 2001	s = section/subsection
LR = legislation register	sch = schedule
LRA = Legislation (Republication) Act 1996	sdiv = subdivision
mod = modified/modification	sub = substituted
o = order	SL = Subordinate Law
om = omitted/repealed	<u>underlining</u> = whole or part not commenced or to be expired

## Endnotes

3 Legislation history

---

### 3 Legislation history

#### Casino Control Regulation 2006 SL2006-8

notified LR 21 March 2006

s 1, s 2 commenced 21 March 2006 (LA s 75 (1))

remainder commenced 1 May 2006 (s 2 and see [Casino Control Act 2006](#) A2006-2, s 2 and [CN2006-6](#))

### 4 Amendment history

#### Commencement

s 2 om LA s 89 (4)

© Australian Capital Territory 2006